

Table 1A: Annual Enrollment at California Community Colleges by Academic Year and Ethnicity

	African American	American Indian	Chicano/ Latino	Asian	White	Other/ Unknown	Total
1992	168,428	26,032	449,166	334,388	1,149,119	135,352	2,262,485
1993	163,921	24,607	445,596	333,804	1,034,365	126,575	2,128,868
1994	163,229	24,355	453,020	333,005	975,791	128,052	2,077,452
1995	166,524	24,800	477,177	340,000	970,838	138,942	2,118,281
1996	174,153	25,683	518,848	356,885	1,003,289	162,146	2,241,004
1997	182,014	25,891	552,194	369,858	1,030,021	187,867	2,347,845
1998	187,196	25,920	584,484	387,709	1,039,634	211,626	2,436,569
1999	191,728	25,784	623,053	401,569	1,058,901	244,450	2,545,485
2000	193,598	25,591	668,421	416,448	1,068,704	274,764	2,647,526
2001	206,339	26,833	739,962	451,238	1,126,221	257,108	2,807,701
2002	211,871	25,794	749,757	457,010	1,109,028	274,740	2,828,200
2003	191,400	22,421	692,962	420,913	965,573	250,599	2,543,868
2004	192,198	22,135	701,037	413,252	932,671	252,894	2,514,187
2005	195,067	21,989	727,428	417,920	920,988	265,718	2,549,110
2006	196,901	22,533	761,772	431,036	929,487	288,138	2,629,867
2007	209,244	23,448	820,408	448,471	952,736	318,109	2,772,416
2008	220,488	24,702	870,580	459,534	983,029	369,301	2,927,634
2009	201,556	18,438	850,757	416,906	892,908	408,299	2,788,864
2010	197,374	15,304	881,524	395,349	839,530	280,920	2,610,001
2011	181,004	12,792	871,104	364,246	756,715	239,295	2,425,156
2012	166,143	10,872	877,825	341,112	692,259	204,073	2,292,284

Figure 1A: Total Annual Enrollment at CCC by Academic Year

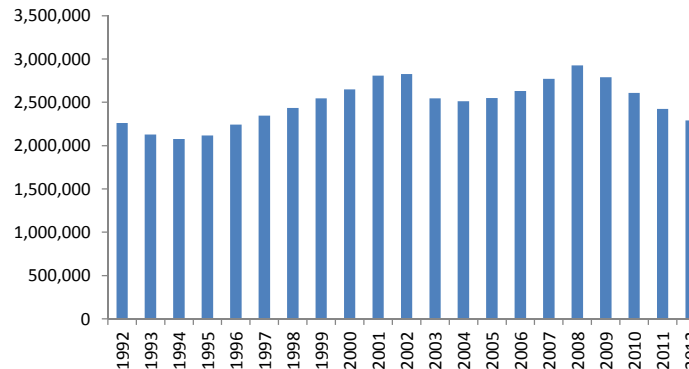
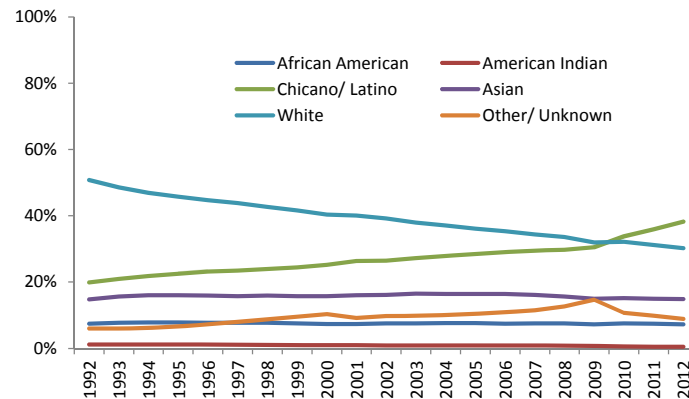


Table 1B: Distribution of CCC Annual Enrollment by Ethnicity

	African American	American Indian	Chicano/ Latino	Asian	White	Other/ Unknown	Total
1992	7.4%	1.2%	19.9%	14.8%	50.8%	6.0%	100.0%
1993	7.7%	1.2%	20.9%	15.7%	48.6%	5.9%	100.0%
1994	7.9%	1.2%	21.8%	16.0%	47.0%	6.2%	100.0%
1995	7.9%	1.2%	22.5%	16.1%	45.8%	6.6%	100.0%
1996	7.8%	1.1%	23.2%	15.9%	44.8%	7.2%	100.0%
1997	7.8%	1.1%	23.5%	15.8%	43.9%	8.0%	100.0%
1998	7.7%	1.1%	24.0%	15.9%	42.7%	8.7%	100.0%
1999	7.5%	1.0%	24.5%	15.8%	41.6%	9.6%	100.0%
2000	7.3%	1.0%	25.2%	15.7%	40.4%	10.4%	100.0%
2001	7.3%	1.0%	26.4%	16.1%	40.1%	9.2%	100.0%
2002	7.5%	0.9%	26.5%	16.2%	39.2%	9.7%	100.0%
2003	7.5%	0.9%	27.2%	16.5%	38.0%	9.9%	100.0%
2004	7.6%	0.9%	27.9%	16.4%	37.1%	10.1%	100.0%
2005	7.7%	0.9%	28.5%	16.4%	36.1%	10.4%	100.0%
2006	7.5%	0.9%	29.0%	16.4%	35.3%	11.0%	100.0%
2007	7.5%	0.8%	29.6%	16.2%	34.4%	11.5%	100.0%
2008	7.5%	0.8%	29.7%	15.7%	33.6%	12.6%	100.0%
2009	7.2%	0.7%	30.5%	14.9%	32.0%	14.6%	100.0%
2010	7.6%	0.6%	33.8%	15.1%	32.2%	10.8%	100.0%
2011	7.5%	0.5%	35.9%	15.0%	31.2%	9.9%	100.0%
2012	7.2%	0.5%	38.3%	14.9%	30.2%	8.9%	100.0%

Figure 1B: Distribution of CCC Annual Enrollment by Ethnicity



Source: California Community College Chancellor's Office Data Mart

Notes: 1) Students who meet the full-term reporting criteria in at least one of the terms during an academic year are included in this query. 2) The full-term reporting criteria is defined as student headcount status STD7 of A,B,C or F (see the detailed definition at http://extranet.cccco.edu/Portals/1/TRIS/MIS/Left_Nav/DED/Derived_Elements/STD/STD7.pdf).

Table 2A: CCC Transfer Ready Students by CCC Academic Year and Ethnicity

	African American	American Indian	Chicano/ Latino	Asian	White	Other/ Unknown	Total
1995	1,687	395	8,050	16,953	21,713	1,809	50,607
1996	1,490	382	7,473	12,676	18,720	1,749	42,490
1997	1,769	432	8,880	12,819	20,835	2,110	46,845
1998	1,907	413	8,910	12,320	20,421	2,362	46,333
1999	1,836	404	9,378	12,131	20,359	2,845	46,953
2000	1,988	338	10,033	12,487	20,743	3,268	48,857
2001	2,059	384	11,308	13,472	21,487	3,348	52,058
2002	2,240	419	12,140	14,526	23,213	3,909	56,447
2003	2,185	388	12,620	14,884	23,340	4,034	57,451
2004	2,443	400	13,633	15,068	24,490	4,386	60,420
2005	2,557	391	13,883	14,837	24,767	4,495	60,930
2006	2,465	407	14,270	14,980	24,136	4,662	60,920
2007	2,356	406	14,864	15,663	23,850	4,855	61,994
2008	2,545	430	16,411	16,362	25,002	5,665	66,415
2009	2,663	421	17,867	16,657	25,218	6,311	69,137
2010	2,769	390	19,836	17,261	25,680	6,599	72,535
2011	2,811	351	22,404	17,226	25,274	7,202	75,268
2012	2,764	273	24,445	16,331	24,628	6,117	74,558

Figure 2A: Total Transfer Ready Students by CCC Academic Year

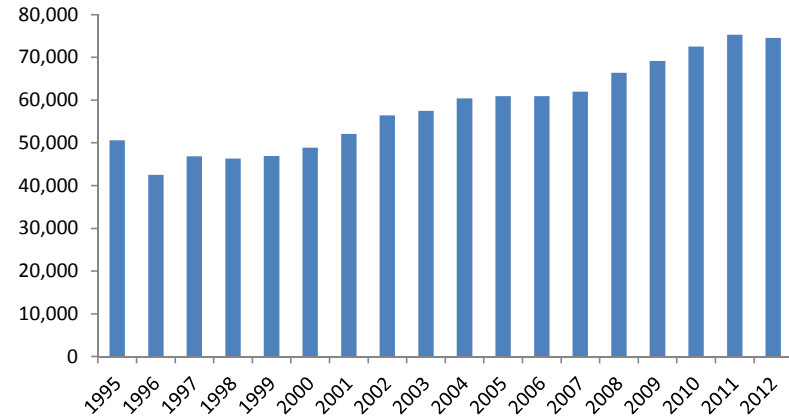
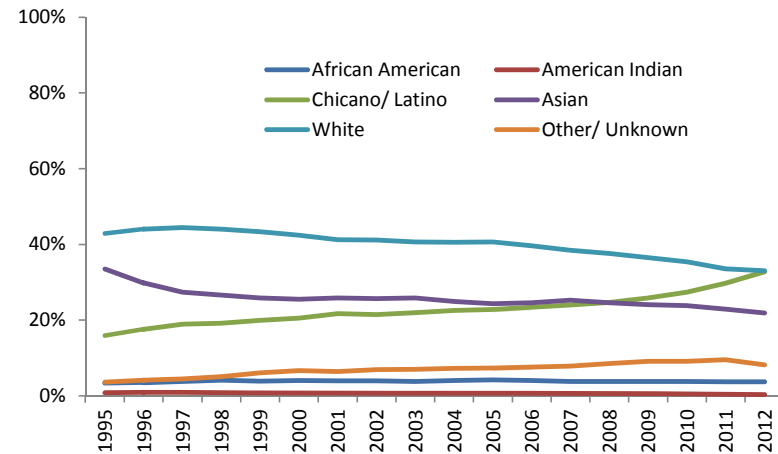


Table 2B: Distribution of CCC Transfer Ready Students by Ethnicity

	African American	American Indian	Chicano/ Latino	Asian	White	Other/ Unknown	Total
1995	3.3%	0.8%	15.9%	33.5%	42.9%	3.6%	100.0%
1996	3.5%	0.9%	17.6%	29.8%	44.1%	4.1%	100.0%
1997	3.8%	0.9%	19.0%	27.4%	44.5%	4.5%	100.0%
1998	4.1%	0.9%	19.2%	26.6%	44.1%	5.1%	100.0%
1999	3.9%	0.9%	20.0%	25.8%	43.4%	6.1%	100.0%
2000	4.1%	0.7%	20.5%	25.6%	42.5%	6.7%	100.0%
2001	4.0%	0.7%	21.7%	25.9%	41.3%	6.4%	100.0%
2002	4.0%	0.7%	21.5%	25.7%	41.1%	6.9%	100.0%
2003	3.8%	0.7%	22.0%	25.9%	40.6%	7.0%	100.0%
2004	4.0%	0.7%	22.6%	24.9%	40.5%	7.3%	100.0%
2005	4.2%	0.6%	22.8%	24.4%	40.6%	7.4%	100.0%
2006	4.0%	0.7%	23.4%	24.6%	39.6%	7.7%	100.0%
2007	3.8%	0.7%	24.0%	25.3%	38.5%	7.8%	100.0%
2008	3.8%	0.6%	24.7%	24.6%	37.6%	8.5%	100.0%
2009	3.9%	0.6%	25.8%	24.1%	36.5%	9.1%	100.0%
2010	3.8%	0.5%	27.3%	23.8%	35.4%	9.1%	100.0%
2011	3.7%	0.5%	29.8%	22.9%	33.6%	9.6%	100.0%
2012	3.7%	0.4%	32.8%	21.9%	33.0%	8.2%	100.0%

Figure 2B: Distribution of CCC Transfer Ready Students by Ethnicity



Source: California Community College Chancellor's Office

Notes: Transfer Ready - includes students who successfully completed both transfer-level Math and English courses and 60 UC/CSU transferable units with a GPA ≥ 2.0 .

TABLE 3
UNIVERSITY OF CALIFORNIA
ENROLLMENTS FROM CALIFORNIA COMMUNITY COLLEGES
2012-13 (FULL YEAR), CA RESIDENTS

	SOURCE SCHOOL NAME	SOURCE SCHOOL CITY	ENRS (#)	ENRS (%)	CUMULATIVE %
1	SANTA MONICA COLLEGE	SANTA MONICA	783	5.6%	5.6%
2	DE ANZA COLLEGE	CUPERTINO	511	3.7%	9.2%
3	PASADENA CITY COLLEGE	PASADENA	498	3.6%	12.8%
4	DIABLO VALLEY COLLEGE	PLEASANT HILL	483	3.5%	16.3%
5	SANTA BARBARA CITY COLLEGE	SANTA BARBARA	464	3.3%	19.6%
6	ORANGE COAST COLLEGE	COSTA MESA	457	3.3%	22.8%
7	CITY COLLEGE SAN FRANCISCO	SAN FRANCISCO	354	2.5%	25.4%
8	MOUNT SAN ANTONIO COLLEGE	WALNUT	353	2.5%	27.9%
9	SADDLEBACK COLLEGE	MISSION VIEJO	328	2.3%	30.2%
10	IRVINE VALLEY COLLEGE	IRVINE	310	2.2%	32.4%
11	EL CAMINO COLLEGE	TORRANCE	290	2.1%	34.5%
12	MOORPARK COLLEGE	MOORPARK	289	2.1%	36.6%
12	SAN DIEGO MESA COLLEGE	SAN DIEGO	289	2.1%	38.6%
14	LOS ANGELES PIERCE COLLEGE	WOODLAND HILLS	286	2.0%	40.7%
15	MIRACOSTA COLLEGE	OCEANSIDE	258	1.8%	42.5%
16	RIVERSIDE CITY COLLEGE	RIVERSIDE	251	1.8%	44.3%
16	SANTA ROSA JUNIOR COLLEGE	SANTA ROSA	251	1.8%	46.1%
18	PALOMAR COLLEGE	SAN MARCOS	250	1.8%	47.9%
19	FOOTHILL COLLEGE	LOS ALTOS HILLS	249	1.8%	49.7%
20	SACRAMENTO CITY COLLEGE	SACRAMENTO	236	1.7%	51.4%
21	GLENDALE COMMUNITY COLLEGE	GLENDALE	234	1.7%	53.0%
22	FULLERTON COLLEGE	FULLERTON	219	1.6%	54.6%
23	AMERICAN RIVER COLLEGE	SACRAMENTO	214	1.5%	56.1%
24	CABRILLO COLLEGE	APTOS	204	1.5%	57.6%
25	SIERRA COLLEGE	ROCKLIN	181	1.3%	58.9%
26	OHLONE COLLEGE	FREMONT	176	1.3%	60.1%
27	COLLEGE OF THE CANYONS	SANTA CLARITA	170	1.2%	61.3%
28	BERKELEY CITY COLLEGE	BERKELEY	162	1.2%	62.5%
29	EAST LOS ANGELES COLLEGE	MONTEREY PARK	157	1.1%	63.6%
30	MOUNT SAN JACINTO COLLEGE	SAN JACINTO	150	1.1%	64.7%
31	COLLEGE OF SAN MATEO	SAN MATEO	142	1.0%	65.7%
32	LOS ANGELES VALLEY COLLEGE	VAN NUYS	138	1.0%	66.7%
33	CERRITOS COLLEGE	NORWALK	135	1.0%	67.7%
34	LANEY COLLEGE	OAKLAND	131	0.9%	68.6%
35	CYPRESS COLLEGE	CYPRESS	130	0.9%	69.5%
36	LAS POSITAS COLLEGE	LIVERMORE	127	0.9%	70.4%
37	SOLANO COMMUNITY COLLEGE	FAIRFIELD	126	0.9%	71.3%
38	CHABOT COLLEGE	HAYWARD	125	0.9%	72.2%
39	SOUTHWESTERN COLLEGE	CHULA VISTA	124	0.9%	73.1%
40	VENTURA COLLEGE	VENTURA	123	0.9%	74.0%
41	GROSSMONT COLLEGE	EL CAJON	120	0.9%	74.8%
42	SKYLINE COLLEGE	SAN BRUNO	118	0.8%	75.7%
43	CHAFFEY COLLEGE	RANCHO CUCAMONGA	117	0.8%	76.5%
43	SAN DIEGO MIRAMAR COLLEGE	SAN DIEGO	117	0.8%	77.4%
45	SAN JOAQUIN DELTA COLLEGE	STOCKTON	109	0.8%	78.1%
46	GOLDEN WEST COLLEGE	HUNTINGTON BEACH	107	0.8%	78.9%
47	COSUMNES RIVER COLLEGE	SACRAMENTO	100	0.7%	79.6%
48	WEST VALLEY COLLEGE	SARATOGA	98	0.7%	80.3%
49	NAPA VALLEY COLLEGE	NAPA	93	0.7%	81.0%
49	COLLEGE OF MARIN	KENTFIELD	93	0.7%	81.6%
51	SANTIAGO CANYON COLLEGE	ORANGE	92	0.7%	82.3%
52	FOLSOM LAKE COLLEGE	FOLSOM	90	0.6%	82.9%
53	LONG BEACH CITY COLLEGE	LONG BEACH	89	0.6%	83.6%
53	RIO HONDO COLLEGE	WHITTIER	89	0.6%	84.2%
53	ALLAN HANCOCK COLLEGE	SANTA MARIA	89	0.6%	84.9%
56	CUESTA COLLEGE	SAN LUIS OBISPO	87	0.6%	85.5%
57	CITRUS COLLEGE	GLENDORA	82	0.6%	86.1%
58	MONTEREY PENINSULA COLLEGE	MONTEREY	81	0.6%	86.6%
59	SANTA ANA COLLEGE	SANTA ANA	79	0.6%	87.2%

TABLE 3
UNIVERSITY OF CALIFORNIA
ENROLLMENTS FROM CALIFORNIA COMMUNITY COLLEGES
2012-13 (FULL YEAR), CA RESIDENTS

	SOURCE SCHOOL NAME	SOURCE SCHOOL CITY	ENRS (#)	ENRS (%)	CUMULATIVE %
60	LOS ANGELES CITY COLLEGE	LOS ANGELES	77	0.6%	87.8%
61	LOS MEDANOS COLLEGE	PITTSBURG	76	0.5%	88.3%
62	MODESTO JUNIOR COLLEGE	MODESTO	75	0.5%	88.8%
63	MERCED COLLEGE	MERCED	73	0.5%	89.4%
64	SAN DIEGO CITY COLLEGE	SAN DIEGO	69	0.5%	89.8%
64	CONTRA COSTA COLLEGE	SAN PABLO	69	0.5%	90.3%
66	FRESNO CITY COLLEGE	FRESNO	67	0.5%	90.8%
66	REEDLEY COLLEGE	REEDLEY	67	0.5%	91.3%
68	NORCO COLLEGE	NORCO	64	0.5%	91.8%
69	COLLEGE OF THE DESERT	PALM DESERT	61	0.4%	92.2%
70	CUYAMACA COLLEGE	EL CAJON	60	0.4%	92.6%
70	EVERGREEN VALLEY COLLEGE	SAN JOSE	60	0.4%	93.0%
72	BAKERSFIELD COLLEGE	BAKERSFIELD	57	0.4%	93.5%
73	HARTNELL COLLEGE	SALINAS	55	0.4%	93.8%
74	ANTELOPE VALLEY COLLEGE	LANCASTER	54	0.4%	94.2%
75	COLLEGE OF ALAMEDA	ALAMEDA	49	0.4%	94.6%
76	LOS ANGELES HARBOR COLLEGE	WILMINGTON	45	0.3%	94.9%
77	MISSION COLLEGE	SANTA CLARA	44	0.3%	95.2%
77	VICTOR VALLEY COLLEGE	VICTORVILLE	44	0.3%	95.5%
79	SHASTA COLLEGE	REDDING	42	0.3%	95.8%
79	COLLEGE OF THE SEQUOIAS	VISALIA	42	0.3%	96.1%
81	WEST LOS ANGELES COLLEGE	CULVER CITY	37	0.3%	96.4%
82	SAN JOSE CITY COLLEGE	SAN JOSE	35	0.3%	96.6%
82	MORENO VALLEY COLLEGE	MORENO VALLEY	35	0.3%	96.9%
84	CANADA COLLEGE	REDWOOD CITY	34	0.2%	97.1%
84	BUTTE COLLEGE	OROVILLE	34	0.2%	97.4%
86	CRAFTON HILLS COLLEGE	YUCAIPA	33	0.2%	97.6%
86	LOS ANGELES MISSION COLLEGE	SYLMAR	33	0.2%	97.9%
88	SAN BERNARDINO VALLEY COLLEGE	SAN BERNARDINO	30	0.2%	98.1%
89	GAVILAN COLLEGE	GILROY	25	0.2%	98.2%
90	YUBA COLLEGE	MARYSVILLE	23	0.2%	98.4%
91	COLUMBIA COLLEGE	SONORA	20	0.1%	98.6%
92	WOODLAND COMMUNITY COLLEGE	WOODLAND	19	0.1%	98.7%
93	CERRO COSO COMMUNITY COLLEGE	RIDGECREST	18	0.1%	98.8%
94	OXNARD COLLEGE	OXNARD	17	0.1%	98.9%
95	IMPERIAL VALLEY COLLEGE	IMPERIAL	16	0.1%	99.1%
96	MERRITT COLLEGE	OAKLAND	15	0.1%	99.2%
96	MENDOCINO COLLEGE	UKIAH	15	0.1%	99.3%
98	COASTLINE COMMUNITY COLLEGE	FOUNTAIN VALLEY	13	0.1%	99.4%
98	PORTERVILLE COLLEGE	PORTERVILLE	13	0.1%	99.5%
98	COPPER MOUNTAIN COLLEGE	JOSHUA TREE	13	0.1%	99.5%
101	LOS ANGELES TRADE-TECH COLLEGE	LOS ANGELES	11	0.1%	99.6%
101	LAKE TAHOE COMMUNITY COLLEGE	SOUTH LAKE TAHOE	11	0.1%	99.7%
103	TAFT COLLEGE	TAFT	7	0.1%	99.8%
103	WEST HILLS COLLEGE LEMOORE	LEMOORE	7	0.1%	99.8%
105	COLLEGE OF THE REDWOODS	EUREKA	6	0.0%	99.8%
106	COLLEGE OF THE SISKIYOU	WEED	5	0.0%	99.9%
107	LOS ANGELES SOUTHWEST COLLEGE	LOS ANGELES	4	0.0%	99.9%
107	WEST HILLS COLLEGE COALINGA	COALINGA	4	0.0%	99.9%
109	BARSTOW COLLEGE	BARSTOW	3	0.0%	100.0%
110	PALO VERDE COLLEGE	BLYTHE	2	0.0%	100.0%
110	LASSEN COLLEGE	SUSANVILLE	2	0.0%	100.0%
112	FEATHER RIVER COLLEGE	QUINCY	1	0.0%	100.0%
	TOTAL		13,999	100.0%	100.0%

Source: UC Corporate Student System

TABLE 4
UNIVERSITY OF CALIFORNIA
APPLICATIONS, ADMISSIONS, ENROLLMENTS
CCC AND ALL OTHER TRANSFERS, FULL-YEAR COUNTS

TRANSFERS	RESIDENCY	APPL	ADM	ENR	APPL %	ADM %	ENR %	ADM RATE	TAKE RATE
ACADEMIC YEAR: 2013-14									
CCC TRANSFERS	CA RES	26,376	18,021	-	75%	81%	-	68%	-
	NR-DOM	2	1	-	0%	0%	-	50%	-
	NR-INT	2,827	2,292	-	8%	10%	-	81%	-
*SUB-TOTAL CCC		29,205	20,314	-	83%	91%	-	70%	-
ALL OTHER TRANS		5,850	2,058	-	17%	9%	-	35%	-
TOTAL		35,055	22,372	-	100%	100%	-	64%	-
ACADEMIC YEAR: 2012-13									
CCC TRANSFERS	CA RES	27,100	18,486	13,999	77%	82%	83%	68%	76%
	NR-DOM	11	3	2	0%	0%	0%	27%	67%
	NR-INT	2,587	2,192	1,642	7%	10%	10%	85%	75%
*SUB-TOTAL CCC		29,698	20,681	15,643	84%	91%	93%	70%	76%
ALL OTHER TRANS		5,690	1,964	1,184	16%	9%	7%	35%	60%
TOTAL		35,388	22,645	16,827	100%	100%	100%	64%	74%
ACADEMIC YEAR: 2011-12									
CCC TRANSFERS	CA RES	28,937	19,307	14,683	78%	83%	84%	67%	76%
	NR-DOM	8	2	1	0%	0%	0%	25%	50%
	NR-INT	2,536	2,140	1,550	7%	9%	9%	84%	72%
*SUB-TOTAL CCC		31,481	21,449	16,234	85%	92%	93%	68%	76%
ALL OTHER TRANS		5,417	1,857	1,145	15%	8%	7%	34%	62%
TOTAL		36,898	23,306	17,379	100%	100%	100%	63%	75%
ACADEMIC YEAR: 2010-11									
CA PUBLIC 2YR (CCC)	CA RES	26,370	20,559	14,525	76%	83%	84%	78%	71%
	NR-DOM	17	9	7	0%	0%	0%	53%	78%
	NR-INT	2,552	2,069	1,430	7%	8%	8%	81%	69%
*SUB-TOTAL CCC		28,939	22,637	15,962	84%	92%	93%	78%	71%
ALL OTHER TRANS		5,700	2,101	1,246	16%	8%	7%	37%	59%
TOTAL		34,639	24,738	17,208	100%	100%	100%	71%	70%
ACADEMIC YEAR: 2009-10									
CA PUBLIC 2YR (CCC)	CA RES	23,747	18,936	13,421	73%	79%	80%	80%	71%
	NR-DOM	11	6	5	0%	0%	0%	55%	83%
	NR-INT	2,294	1,843	1,243	7%	8%	7%	80%	67%
*SUB-TOTAL CCC		26,052	20,785	14,669	80%	87%	87%	80%	71%
ALL OTHER TRANS		6,670	3,199	2,118	20%	13%	13%	48%	66%
TOTAL		32,722	23,984	16,787	100%	100%	100%	73%	70%
ACADEMIC YEAR: 2008-09									
CA PUBLIC 2YR (CCC)	CA RES	22,220	18,015	13,004	73%	80%	82%	81%	72%
	NR-DOM	8	3	2	0%	0%	0%	38%	67%
	NR-INT	1,901	1,559	1,055	6%	7%	7%	82%	68%
*SUB-TOTAL CCC		24,129	19,577	14,061	79%	87%	89%	81%	72%
ALL OTHER TRANS		6,342	2,804	1,740	21%	13%	11%	44%	62%
TOTAL		30,471	22,381	15,801	100%	100%	100%	73%	71%

TABLE 4
UNIVERSITY OF CALIFORNIA
APPLICATIONS, ADMISSIONS, ENROLLMENTS
CCC AND ALL OTHER TRANSFERS, FULL-YEAR COUNTS

TRANSFERS	RESIDENCY	APPL	ADM	ENR	APPL %	ADM %	ENR %	ADM RATE	TAKE RATE
ACADEMIC YEAR: 2007-08									
CA PUBLIC 2YR (CCC)	CA RES	21,412	17,780	13,029	74%	81%	84%	83%	73%
	NR-DOM	10	4	1	0%	0%	0%	40%	25%
	NR-INT	1,578	1,292	881	5%	6%	6%	82%	68%
*SUB-TOTAL CCC		23,000	19,076	13,911	80%	87%	89%	83%	73%
ALL OTHER TRANS		5,804	2,813	1,676	20%	13%	11%	48%	60%
TOTAL		28,804	21,889	15,587	100%	100%	100%	76%	71%
ACADEMIC YEAR: 2006-07									
CA PUBLIC 2YR (CCC)	CA RES	21,808	18,020	13,064	76%	82%	84%	83%	72%
	NR-DOM	20	12	8	0%	0%	0%	60%	67%
	NR-INT	1,467	1,199	802	5%	5%	5%	82%	67%
*SUB-TOTAL CCC		23,295	19,231	13,874	81%	88%	89%	83%	72%
ALL OTHER TRANS		5,507	2,689	1,637	19%	12%	11%	49%	61%
TOTAL		28,802	21,920	15,511	100%	100%	100%	76%	71%
ACADEMIC YEAR: 2005-06									
CA PUBLIC 2YR (CCC)	CA RES	21,045	16,985	12,661	76%	82%	83%	81%	75%
	NR-DOM	14	7	4	0%	0%	0%	50%	57%
	NR-INT	1,507	1,208	843	5%	6%	6%	80%	70%
*SUB-TOTAL CCC		22,566	18,200	13,508	81%	88%	89%	81%	74%
ALL OTHER TRANS		5,140	2,591	1,735	19%	12%	11%	50%	67%
TOTAL		27,706	20,791	15,243	100%	100%	100%	75%	73%
ACADEMIC YEAR: 2004-05									
CA PUBLIC 2YR (CCC)	CA RES	20,413	15,339	12,000	75%	81%	84%	75%	78%
	NR-DOM	290	217	145	1%	1%	1%	75%	67%
	NR-INT	1,798	1,401	974	7%	7%	7%	78%	70%
*SUB-TOTAL CCC		22,501	16,957	13,119	83%	90%	92%	75%	77%
ALL OTHER TRANS		4,601	1,933	1,214	17%	10%	8%	42%	63%
TOTAL		27,102	18,890	14,333	100%	100%	100%	70%	76%
ACADEMIC YEAR: 2003-04									
CA PUBLIC 2YR (CCC)	CA RES	20,505	15,289	11,576	73%	79%	82%	75%	76%
	NR-DOM	166	110	71	1%	1%	1%	66%	65%
	NR-INT	1,704	1,247	896	6%	6%	6%	73%	72%
*SUB-TOTAL CCC		22,375	16,646	12,543	80%	87%	89%	74%	75%
ALL OTHER TRANS		5,676	2,589	1,570	20%	13%	11%	46%	61%
TOTAL		28,051	19,235	14,113	100%	100%	100%	69%	73%

Source: UC Corporate Student System

Notes:

Beginning in Fall 2011, UC Merced admitted referral students only if they "opted in," which partially explains the drop in systemwide admissions for that year.

2013-14 data are in progress.

TABLE 5A
UNIVERSITY OF CALIFORNIA
APPLICATIONS, ADMISSIONS, ENROLLMENTS
CA RESIDENT TRANSFER APPLICANTS FROM CCC BY ETHNICITY, FULL-YEAR, COUNTS

ETHNICITY	2003-04	2004-05	2005-06	2006-07	2007-08	2008-09	2009-10	2010-11	2011-12	2012-13	2013-14
APPLICATIONS											
AFRICAN AMER	732	743	802	865	885	888	1,003	1,316	1,379	1,312	1,427
AMER INDIAN	191	211	172	183	192	189	227	303	305	312	287
ASIAN	5,379	5,319	5,858	5,822	5,803	6,310	6,619	7,122	8,275	8,048	7,569
CHICANO/LATINO	3,375	3,415	3,547	3,880	3,900	4,103	4,481	5,165	6,529	6,304	6,885
OTHER	602	607	654	669	549	559	673				
UNKNOWN	2,132	1,785	1,437	1,586	1,446	1,440	1,865	2,814	1,427	1,396	806
WHITE	8,094	8,333	8,575	8,803	8,637	8,731	8,879	9,650	11,022	9,728	9,402
TOTAL	20,505	20,413	21,045	21,808	21,412	22,220	23,747	26,370	28,937	27,100	26,376
<i>URM Total</i>	<i>4,298</i>	<i>4,369</i>	<i>4,521</i>	<i>4,928</i>	<i>4,977</i>	<i>5,180</i>	<i>5,711</i>	<i>6,784</i>	<i>8,213</i>	<i>7,928</i>	<i>8,599</i>
ADMISSIONS											
AFRICAN AMER	443	461	547	637	644	605	673	848	730	700	794
AMER INDIAN	126	145	128	148	151	143	171	233	167	202	170
ASIAN	4,070	4,133	4,809	4,864	4,952	5,260	5,438	5,789	5,828	5,757	5,379
CHICANO/LATINO	2,508	2,509	2,860	3,154	3,211	3,270	3,571	3,959	4,182	4,084	4,585
OTHER	426	468	543	548	451	427	534				
UNKNOWN	1,629	1,343	1,160	1,304	1,215	1,173	1,425	2,113	990	1,026	560
WHITE	6,087	6,280	6,938	7,365	7,156	7,137	7,124	7,617	7,410	6,717	6,533
TOTAL	15,289	15,339	16,985	18,020	17,780	18,015	18,936	20,559	19,307	18,486	18,021
<i>URM Total</i>	<i>3,077</i>	<i>3,115</i>	<i>3,535</i>	<i>3,939</i>	<i>4,006</i>	<i>4,018</i>	<i>4,415</i>	<i>5,040</i>	<i>5,079</i>	<i>4,986</i>	<i>5,549</i>
ENROLLMENTS											
AFRICAN AMER	325	337	379	424	440	395	448	566	531	497	
AMER INDIAN	94	116	88	105	107	106	129	158	127	144	
ASIAN	3,124	3,281	3,724	3,649	3,773	3,995	3,976	4,308	4,571	4,482	
CHICANO/LATINO	1,871	1,911	2,056	2,154	2,217	2,300	2,396	2,652	3,010	2,980	
OTHER	317	379	394	378	316	286	359				
UNKNOWN	1,203	1,019	873	945	901	854	1,034	1,472	791	831	
WHITE	4,642	4,957	5,147	5,409	5,275	5,068	5,079	5,369	5,653	5,065	
TOTAL	11,576	12,000	12,661	13,064	13,029	13,004	13,421	14,525	14,683	13,999	
<i>URM Total</i>	<i>2,290</i>	<i>2,364</i>	<i>2,523</i>	<i>2,683</i>	<i>2,764</i>	<i>2,801</i>	<i>2,973</i>	<i>3,376</i>	<i>3,668</i>	<i>3,621</i>	

Notes:

As of 2010 the race/ethnicity survey does not include "Other" as a category.

Data exclude international students.

2013-14 data are in progress

URM stands for Underrepresented Minority, which includes the African American, American Indian, and Chicano/Latino categories.

Source: UC Corporate Student System

TABLE 5B
UNIVERSITY OF CALIFORNIA
APPLICATIONS, ADMISSIONS, ENROLLMENTS
CA RESIDENT TRANSFER APPLICANTS FROM CCC BY ETHNICITY, FULL-YEAR, PROPORTIONS

ETHNICITY	2003-04	2004-05	2005-06	2006-07	2007-08	2008-09	2009-10	2010-11	2011-12	2012-13	2013-14
APPLICATIONS											
AFRICAN AMER	3.6%	3.6%	3.8%	4.0%	4.1%	4.0%	4.2%	5.0%	4.8%	4.8%	5.4%
AMER INDIAN	0.9%	1.0%	0.8%	0.8%	0.9%	0.9%	1.0%	1.1%	1.1%	1.2%	1.1%
ASIAN	26.2%	26.1%	27.8%	26.7%	27.1%	28.4%	27.9%	27.0%	28.6%	29.7%	28.7%
CHICANO/LATINO	16.5%	16.7%	16.9%	17.8%	18.2%	18.5%	18.9%	19.6%	22.6%	23.3%	26.1%
OTHER	2.9%	3.0%	3.1%	3.1%	2.6%	2.5%	2.8%				
UNKNOWN	10.4%	8.7%	6.8%	7.3%	6.8%	6.5%	7.9%	10.7%	4.9%	5.2%	3.1%
WHITE	39.5%	40.8%	40.7%	40.4%	40.3%	39.3%	37.4%	36.6%	38.1%	35.9%	35.6%
TOTAL	100.0%	100.0%	100.0%	100.0%	100.0%	100.0%	100.0%	100.0%	100.0%	100.0%	100.0%
<i>URM Total</i>	<i>21.0%</i>	<i>21.4%</i>	<i>21.5%</i>	<i>22.6%</i>	<i>23.2%</i>	<i>23.3%</i>	<i>24.0%</i>	<i>25.7%</i>	<i>28.4%</i>	<i>29.3%</i>	<i>32.6%</i>
ADMISSIONS											
AFRICAN AMER	2.9%	3.0%	3.2%	3.5%	3.6%	3.4%	3.6%	4.1%	3.8%	3.8%	4.4%
AMER INDIAN	0.8%	0.9%	0.8%	0.8%	0.8%	0.8%	0.9%	1.1%	0.9%	1.1%	0.9%
ASIAN	26.6%	26.9%	28.3%	27.0%	27.9%	29.2%	28.7%	28.2%	30.2%	31.1%	29.8%
CHICANO/LATINO	16.4%	16.4%	16.8%	17.5%	18.1%	18.2%	18.9%	19.3%	21.7%	22.1%	25.4%
OTHER	2.8%	3.1%	3.2%	3.0%	2.5%	2.4%	2.8%				
UNKNOWN	10.7%	8.8%	6.8%	7.2%	6.8%	6.5%	7.5%	10.3%	5.1%	5.6%	3.1%
WHITE	39.8%	40.9%	40.8%	40.9%	40.2%	39.6%	37.6%	37.0%	38.4%	36.3%	36.3%
TOTAL	100.0%	100.0%	100.0%	100.0%	100.0%	100.0%	100.0%	100.0%	100.0%	100.0%	100.0%
<i>URM Total</i>	<i>20.1%</i>	<i>20.3%</i>	<i>20.8%</i>	<i>21.9%</i>	<i>22.5%</i>	<i>22.3%</i>	<i>23.3%</i>	<i>24.5%</i>	<i>26.3%</i>	<i>27.0%</i>	<i>30.8%</i>
ENROLLMENTS											
AFRICAN AMER	2.8%	2.8%	3.0%	3.2%	3.4%	3.0%	3.3%	3.9%	3.6%	3.6%	
AMER INDIAN	0.8%	1.0%	0.7%	0.8%	0.8%	0.8%	1.0%	1.1%	0.9%	1.0%	
ASIAN	27.0%	27.3%	29.4%	27.9%	29.0%	30.7%	29.6%	29.7%	31.1%	32.0%	
CHICANO/LATINO	16.2%	15.9%	16.2%	16.5%	17.0%	17.7%	17.9%	18.3%	20.5%	21.3%	
OTHER	2.7%	3.2%	3.1%	2.9%	2.4%	2.2%	2.7%				
UNKNOWN	10.4%	8.5%	6.9%	7.2%	6.9%	6.6%	7.7%	10.1%	5.4%	5.9%	
WHITE	40.1%	41.3%	40.7%	41.4%	40.5%	39.0%	37.8%	37.0%	38.5%	36.2%	
TOTAL	100.0%	100.0%	100.0%	100.0%	100.0%	100.0%	100.0%	100.0%	100.0%	100.0%	
<i>URM Total</i>	<i>19.8%</i>	<i>19.7%</i>	<i>19.9%</i>	<i>20.5%</i>	<i>21.2%</i>	<i>21.5%</i>	<i>22.2%</i>	<i>23.2%</i>	<i>25.0%</i>	<i>25.9%</i>	

Notes:
As of 2010 the race/ethnicity survey does not include "Other" as a category.
Data exclude international students.
2013-14 data are in progress
URM stands for Underrepresented Minority, which includes the African American, American Indian, and Chicano/Latino categories.

Source: UC Corporate Student System

TABLE 6
UNIVERSITY OF CALIFORNIA
PROFILE: CA RESIDENT TRANSFERS FROM CALIFORNIA COMMUNITY COLLEGES

	FALL 2011			FALL 2012			FALL 2013		
	APPS	ADMITS	SIRS	APPS	ADMITS	SIRS	APPS	ADMITS	SIRS
ACADEMIC PROFILE									
AVERAGE GPA	3.26	3.41	3.43	3.28	3.43	3.44	3.28	3.43	3.44
DEMOGRAPHIC PROFILE									
URM	28.8%	26.8%	25.8%	29.6%	27.3%	26.5%	32.4%	30.7%	29.8%
FEMALE	47.5%	48.7%	48.2%	46.8%	48.0%	47.8%	46.7%	48.3%	48.6%
FIRST GENERATION COLLEGE	48.9%	48.9%	48.0%	50.4%	50.2%	49.9%	52.1%	52.2%	51.9%
LOW INCOME	45.7%	45.2%	44.9%	45.9%	45.5%	45.0%	46.1%	46.0%	45.7%
INDEPENDENT	28.1%	26.0%	26.1%	21.8%	20.4%	20.5%	22.0%	20.5%	20.6%
RACE/ETHNICITY									
AFRICAN AMER	4.8%	3.9%	3.8%	4.9%	3.8%	3.7%	5.4%	4.4%	4.2%
AMER INDIAN	1.1%	0.9%	0.9%	1.2%	1.1%	1.0%	1.1%	1.0%	1.0%
ASIAN	28.9%	30.5%	31.3%	30.2%	31.8%	32.4%	28.6%	29.6%	30.2%
CHICANO/LATINO	22.9%	22.0%	21.1%	23.5%	22.4%	21.7%	25.9%	25.3%	24.7%
WHITE	38.8%	39.2%	39.3%	36.6%	37.2%	37.3%	35.9%	36.6%	36.7%
UNKNOWN	3.4%	3.5%	3.7%	3.6%	3.7%	3.8%	3.1%	3.1%	3.2%

Notes:

Data are in-progress fall numbers from each year's admission file, not final full-year data.

SIR stands for Statement of Intent to Register. Admitted students submit SIRs following admission to signal their intent to accept the admission offer and enroll at a UC campus.

Income Level is a self-reported category on the application for admission. It is not used for financial aid purposes.

Source: UC Undergraduate 2011, 2012, & 2013 Admissions Files

TABLE 7
UNIVERSITY OF CALIFORNIA
2012-13 PELL GRANT RECEIPT
BY: FRESHMAN/TRANSFER AND RESIDENCY

STUDENTS RECEIVING ANY PELL GRANT		
	#	%
<i>All students who entered as freshmen</i>	146,650	39.6%
CA resident	132,545	42.5%
Nonresident	14,105	12.4%
<i>All new entering freshmen (Fall 2012)</i>	38,761	40.4%
CA resident	32,742	45.8%
Nonresident	6,019	10.6%
<i>All students who entered as CCC transfer students</i>	38,194	50.6%
CA resident	33,919	56.0%
Nonresident	4,275	7.6%
<i>All new entering CCC transfer students (Fall 2012)</i>	15,242	48.7%
CA resident	13,265	55.0%
Nonresident	1,977	6.5%

Source: UC Corporate Student System, final 2012-13 data

Table 8A: CCC Transfer Ready Students Progressing Each Stage Toward a UC Bachelor's Degree

CCC/UC Academic Year	Transfer Ready	UC Applicants	UC Admits	UC Enrollees	4 Year Grads
1995/1996	50,607	15,203	11,705	8,725	6,746
1996/1997	42,490	14,499	11,352	8,496	6,671
1997/1998	46,845	14,524	10,870	8,268	6,731
1998/1999	46,333	15,443	11,773	8,616	6,992
1999/2000	46,953	15,990	12,566	9,188	7,584
2000/2001	48,857	16,833	13,549	9,894	8,172
2001/2002	52,058	17,806	13,915	10,329	8,597
2002/2003	56,447	19,172	15,035	11,255	9,470
2003/2004	57,451	20,563	15,289	11,729	9,984
2004/2005	60,420	20,339	16,322	12,043	10,240
2005/2006	60,930	20,110	16,592	11,941	10,099
2006/2007	60,920	19,728	16,549	11,914	9,994
2007/2008	61,994	21,255	17,373	12,377	10,529
2008/2009	66,415	23,849	19,339	13,717	
2009/2010	69,137	28,287	22,157	15,572	
2010/2011	72,535	30,885	20,992	15,848	
2011/2012	75,268	29,136	20,221	15,236	
2012/2013	74,558				

Figure 1: CCC Transfer Ready Students Progressing Each Stage Toward a UC Bachelor's Degree (CCC Academic Year)

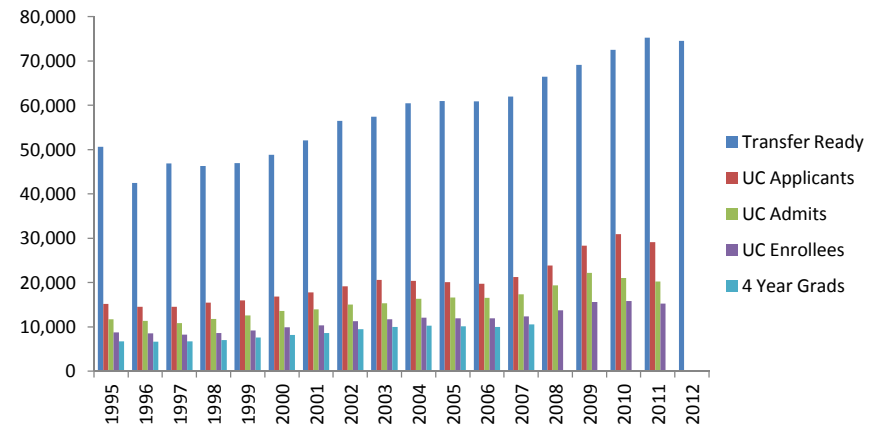


Table 8B: UC Applicants, Admits, Enrollees, and 4 Year Graduates as % of Transfer Ready Students

CCC/UC Academic Year	Transfer Ready	UC Applicants	UC Admits	UC Enrollees	4 Year Grads
1995/1996		30.0%	23.1%	17.2%	13.3%
1996/1997		34.1%	26.7%	20.0%	15.7%
1997/1998		31.0%	23.2%	17.6%	14.4%
1998/1999		33.3%	25.4%	18.6%	15.1%
1999/2000		34.1%	26.8%	19.6%	16.2%
2000/2001		34.5%	27.7%	20.3%	16.7%
2001/2002		34.2%	26.7%	19.8%	16.5%
2002/2003		34.0%	26.6%	19.9%	16.8%
2003/2004		35.8%	26.6%	20.4%	17.4%
2004/2005		33.7%	27.0%	19.9%	16.9%
2005/2006		33.0%	27.2%	19.6%	16.6%
2006/2007		32.4%	27.2%	19.6%	16.4%
2007/2008		34.3%	28.0%	20.0%	17.0%
2008/2009		35.9%	29.1%	20.7%	
2009/2010		40.9%	32.0%	22.5%	
2010/2011		42.6%	28.9%	21.8%	
2011/2012		38.7%	26.9%	20.2%	

Figure 2: UC Applicants, Admits, Enrollees, and 4 Year Graduates as % of Transfer Ready Students (CCC Academic Year)

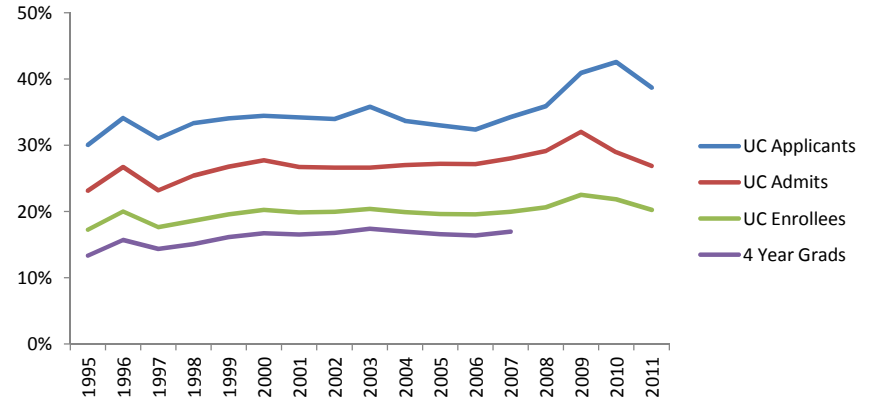


Table 8C: CCC Transfer Ready Students Progressing Each Stage Toward a UC Bachelor's Degree

	Transfer Ready	UC Applicants	UC Admits	UC Enrollees	4 Year Grads
Total Number					
1995	50,607	15,203	11,705	8,725	6,746
2001	52,058	17,806	13,915	10,329	8,597
2007	61,994	21,255	17,373	12,377	10,529
2011	75,268	29,136	20,221	15,236	--
% of Transfer Ready					
1995		30.0%	23.1%	17.2%	13.3%
2001		34.2%	26.7%	19.8%	16.5%
2007		34.3%	28.0%	20.0%	17.0%
2011		38.7%	26.9%	20.2%	
% of Applicants					
1995			77.0%	57.4%	44.4%
2001			78.1%	58.0%	48.3%
2007			81.7%	58.2%	49.5%
2011			69.4%	52.3%	--
% of Admits					
1995				74.5%	57.6%
2001				74.2%	61.8%
2007				71.2%	60.6%
2011				75.3%	
% of Enrollees					
1995					77.3%
2001					83.2%
2007					85.1%
2011					--
Change					
1995-2007	22.5%	39.8%	48.4%	41.9%	56.1%
1995-2011	44.6%	63.6%	45.3%	47.5%	

Source: California Community College Chancellor's Office/UC Corporate Student System

Notes: 1) Transfer Ready - includes students who successfully completed both transfer-level Math and English courses and 60 UC/CSU transferable units with a GPA >=2.0.

2) UC applicants, admits, enrollees, and 4 year graduates include those who applied for the fall term only.

Figure 3: Change of Transfer Ready Students, UC Applicants, Admits, Enrollees, 4 Year Grads

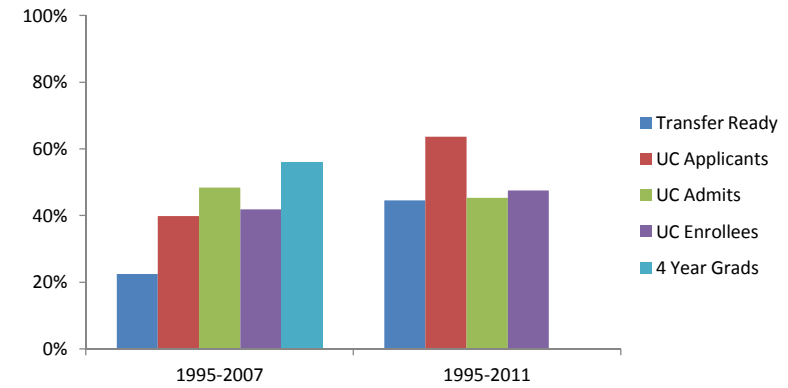


Figure 4: Admit Rate, Yield Rate, and 4 Year Graduation Rate

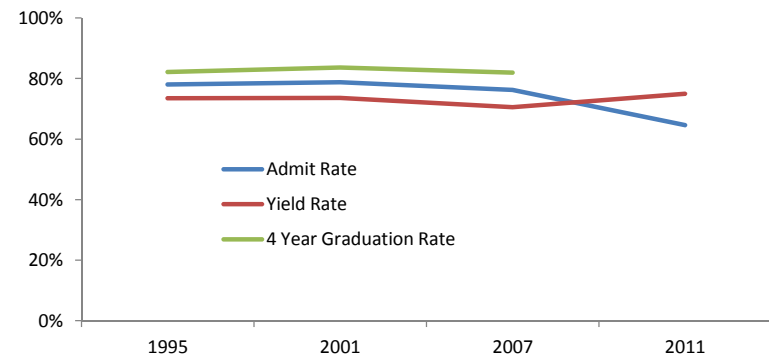


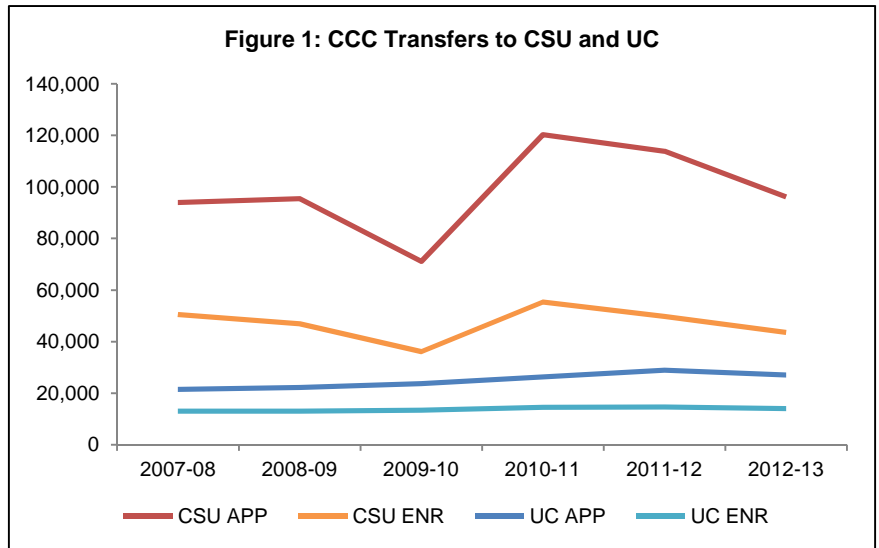
Table 9: First Year Persistence Rate, and 2-Year, 3-Year, and 4-Year Graduation Rates for CCC Transfer Students, Fall Entering Cohorts 2000 - 2011

Entry Year	CCC Transfers					Freshmen				
	1st Year Persistence Rate	2 Year Grad Rate	3 Year Grad Rate	4 Year Grad Rate	Average Graduation GPA	1st Year Persistence Rate	4 Year Grad Rate	5 Year Grad Rate	6 Year Grad Rate	Average Graduation GPA
2000	92.1%	43.0%	76.3%	83.4%	2.31	92.3%	50.9%	77.0%	81.0%	2.11
2001	92.4%	44.1%	76.5%	83.8%	2.58	92.4%	53.7%	77.4%	81.4%	2.45
2002	91.4%	46.6%	78.1%	84.3%	2.61	91.9%	55.8%	78.4%	82.3%	2.48
2003	92.0%	50.2%	79.6%	85.2%	2.66	92.0%	56.6%	78.4%	82.0%	2.47
2004	92.1%	51.8%	80.1%	86.1%	2.68	92.4%	58.8%	79.7%	83.2%	2.52
2005	92.1%	51.4%	80.6%	85.9%	2.66	92.1%	59.8%	79.9%	83.1%	2.53
2006	92.4%	51.7%	80.1%	85.4%	2.64	92.3%	60.3%	80.2%	83.5%	2.50
2007	91.7%	50.1%	78.8%	84.6%	2.58	91.9%	60.1%	79.8%		
2008	92.4%	51.9%	80.4%	85.7%	2.56	92.6%	61.5%			
2009	92.4%	53.7%	81.3%			93.0%				
2010	92.7%	54.5%				93.1%				
2011	93.0%					92.6%				

TABLE 10
CCC TRANSFERS TO CSU AND UC, FULL-YEAR COUNTS
APPLICATIONS, ADMISSIONS, ENROLLMENTS

CALIFORNIA STATE UNIVERSITY			
	APP	ADM	ENR
2012-13	96,070	71,022	43,521
2011-12	113,773	80,910	49,797
2010-11	120,185	89,059	55,380
2009-10	71,086	56,895	36,065
2008-09	95,380	73,765	46,871
2007-08	93,946	76,412	50,502

UNIVERSITY OF CALIFORNIA			
	APP	ADM	ENR
2012-13	27,100	18,486	13,999
2011-12	28,937	19,307	14,683
2010-11	26,370	20,559	14,525
2009-10	23,747	18,936	13,421
2008-09	22,220	18,015	13,004
2007-08	21,412	17,780	13,029



Notes:

CSU Data include all CCC transfers, regardless of residency and Upper Division transfers only

UC Data include CA Resident CCC transfers

Sources: CSU Division of Analytic Studies; UC Corporate Student System