

Table 8A: CCC Transfer Ready Students Progressing Each Stage Toward a UC Bachelor's Degree

CCC/UC Academic Year	Transfer Ready	UC Applicants	UC Admits	UC Enrollees	4 Year Grads
1995/1996	50,607	15,203	11,705	8,725	6,746
1996/1997	42,490	14,499	11,352	8,496	6,671
1997/1998	46,845	14,524	10,870	8,268	6,731
1998/1999	46,333	15,443	11,773	8,616	6,992
1999/2000	46,953	15,990	12,566	9,188	7,584
2000/2001	48,857	16,833	13,549	9,894	8,172
2001/2002	52,058	17,806	13,915	10,329	8,597
2002/2003	56,447	19,172	15,035	11,255	9,470
2003/2004	57,451	20,563	15,289	11,729	9,984
2004/2005	60,420	20,339	16,322	12,043	10,240
2005/2006	60,930	20,110	16,592	11,941	10,099
2006/2007	60,920	19,728	16,549	11,914	9,994
2007/2008	61,994	21,255	17,373	12,377	10,529
2008/2009	66,415	23,849	19,339	13,717	
2009/2010	69,137	28,287	22,157	15,572	
2010/2011	72,535	30,885	20,992	15,848	
2011/2012	75,268	29,136	20,221	15,236	
2012/2013	74,558				

Figure 1: CCC Transfer Ready Students Progressing Each Stage Toward a UC Bachelor's Degree (CCC Academic Year)

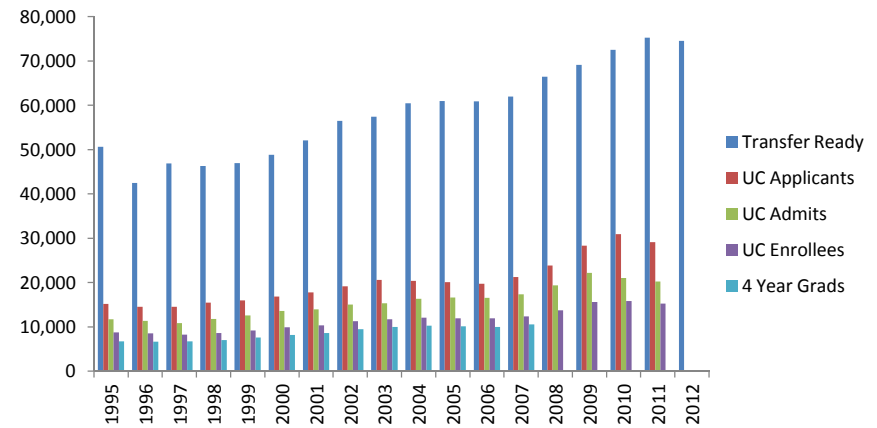


Table 8B: UC Applicants, Admits, Enrollees, and 4 Year Graduates as % of Transfer Ready Students

CCC/UC Academic Year	Transfer Ready	UC Applicants	UC Admits	UC Enrollees	4 Year Grads
1995/1996		30.0%	23.1%	17.2%	13.3%
1996/1997		34.1%	26.7%	20.0%	15.7%
1997/1998		31.0%	23.2%	17.6%	14.4%
1998/1999		33.3%	25.4%	18.6%	15.1%
1999/2000		34.1%	26.8%	19.6%	16.2%
2000/2001		34.5%	27.7%	20.3%	16.7%
2001/2002		34.2%	26.7%	19.8%	16.5%
2002/2003		34.0%	26.6%	19.9%	16.8%
2003/2004		35.8%	26.6%	20.4%	17.4%
2004/2005		33.7%	27.0%	19.9%	16.9%
2005/2006		33.0%	27.2%	19.6%	16.6%
2006/2007		32.4%	27.2%	19.6%	16.4%
2007/2008		34.3%	28.0%	20.0%	17.0%
2008/2009		35.9%	29.1%	20.7%	
2009/2010		40.9%	32.0%	22.5%	
2010/2011		42.6%	28.9%	21.8%	
2011/2012		38.7%	26.9%	20.2%	

Figure 2: UC Applicants, Admits, Enrollees, and 4 Year Graduates as % of Transfer Ready Students (CCC Academic Year)

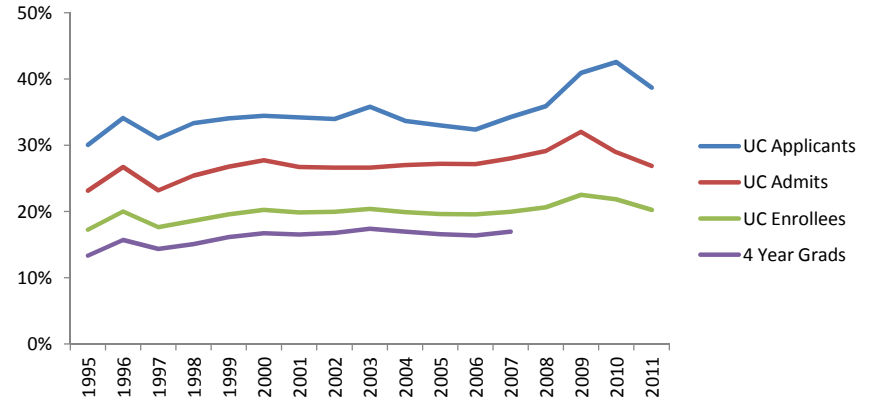


Table 8C: CCC Transfer Ready Students Progressing Each Stage Toward a UC Bachelor's Degree

	Transfer Ready	UC Applicants	UC Admits	UC Enrollees	4 Year Grads
Total Number					
1995	50,607	15,203	11,705	8,725	6,746
2001	52,058	17,806	13,915	10,329	8,597
2007	61,994	21,255	17,373	12,377	10,529
2011	75,268	29,136	20,221	15,236	--
% of Transfer Ready					
1995		30.0%	23.1%	17.2%	13.3%
2001		34.2%	26.7%	19.8%	16.5%
2007		34.3%	28.0%	20.0%	17.0%
2011		38.7%	26.9%	20.2%	
% of Applicants					
1995			77.0%	57.4%	44.4%
2001			78.1%	58.0%	48.3%
2007			81.7%	58.2%	49.5%
2011			69.4%	52.3%	--
% of Admits					
1995				74.5%	57.6%
2001				74.2%	61.8%
2007				71.2%	60.6%
2011				75.3%	
% of Enrollees					
1995					77.3%
2001					83.2%
2007					85.1%
2011					--
Change					
1995-2007	22.5%	39.8%	48.4%	41.9%	56.1%
1995-2011	44.6%	63.6%	45.3%	47.5%	

Source: California Community College Chancellor's Office/UC Corporate Student System

Notes: 1) Transfer Ready - includes students who successfully completed both transfer-level Math and English courses and 60 UC/CSU transferable units with a GPA >=2.0.

2) UC applicants, admits, enrollees, and 4 year graduates include those who applied for the fall term only.

Figure 3: Change of Transfer Ready Students, UC Applicants, Admits, Enrollees, 4 Year Grads

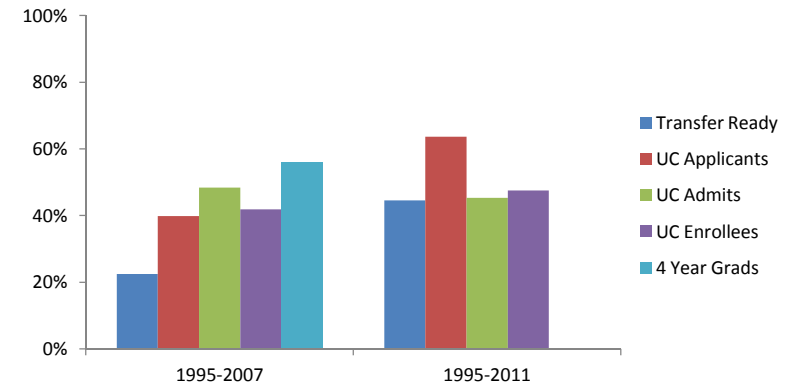


Figure 4: Admit Rate, Yield Rate, and 4 Year Graduation Rate

