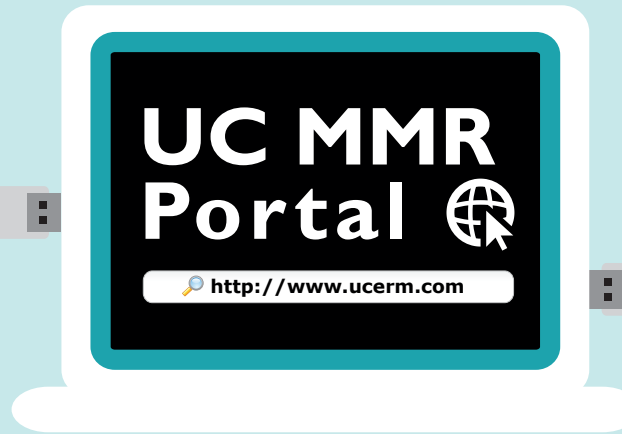


UC MMR (My Managed Risk) Portal

530-638-DESK



www.ucop.edu/riskmgmt



Helping You Manage Your Risk

erm@ucop.edu



Technology Support

Request Access

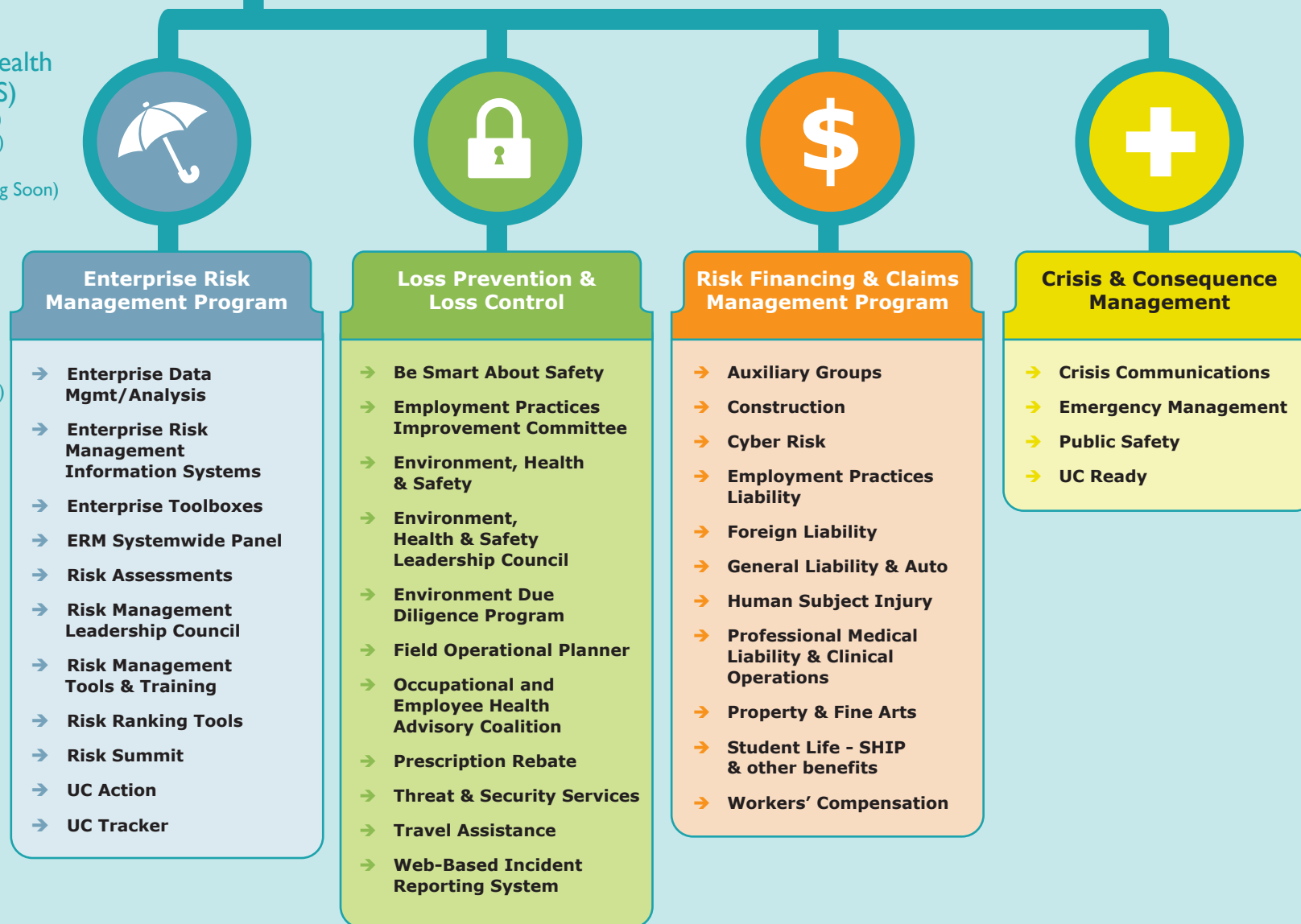


Portal Applications

- Behavioral Intervention Team System (BIT) (Coming Soon)
- Campus Connexions
- Connexus
- ERMIS Dashboards
- iVos – Claim System
 - General Liability System
 - Professional Liability System
 - Workers' Compensation
- Learning Management System (LMS) Reports
- LMS Integration Tools
- Marsh eRoom
- Occupational Health Surveillance System (OHSS)
- Point N Click (PNC)
- Power DMS
- RL Solutions
- Settlement Authorization Request (SAR)
- ServiceNow

- Stored Information Retrieval System (SIR)
- Suite of Environmental Health & Safety Systems (UCEHS)
 - Biosafety Information Online (BIO)
 - Chemical Inventory (Coming Soon)
 - Lab Audit System (Coming Soon)
 - Online Tag Program (OTP) (Coming Soon)
 - RADiCAL System (Coming Soon)
- UC Action
- UC Forms
- UC Plan (TMI)
 - Budget Development System (BDS)
 - Capital Markets
 - Capital Projects
 - RGPO
- UC Ready
- UC Resilient
- UC RiskWorks (also known as Exigis)
- UC SharePoint
- UC Tracker
- UC Travel Assistance
 - Field Operation Planner
 - iJet
 - UC Trip Planner
 - UC Trips

ERM Solution Set



UC MMR Portal My Managed Risk

<http://www.ucerm.com>

Our solutions allow the University to take on new opportunities and, by managing risk strategically, ensure optimum outcomes. We have learned that by focusing on developing tools that address a broad array of risks, both frequent and infrequent, large and small, we create a more efficient and effective program.



Portal Applications

System	Description
Behavioral Intervention Team System (Coming Soon)	The BIT system is a tool for the campus Behavioral Intervention Teams. The system provides a central hub for information on campus incidents, pulling together necessary data from department specific systems.
Campus Connexions	Campus Connexions is a program that provides insurance coverage to faculty, staff, students, and supporting third parties (e.g., foundations, alumni associations, etc.) for events and activities held on campus.
Connexus	Connexus is the UC & CSU system wide travel program that combines discounts with a range of booking options, providing value, flexibility, and convenience for UC and CSU business travelers.
ERMIS Dashboards	ERMIS Dashboards provide and integrate reporting solutions to business users and executives from relevant administrative systems.
iVos – Claim System • General Liability System • Professional Liability System • Workers’ Compensation	iVOS is the UC primary database for managing worker's compensation, general liability and professional liability claims.
Learning Management System (LMS) Reports	A web-based reporting interface that provides custom report from LMS.
LMS Integration Tools	The LMS Integrator provides campus departments the ability to request and obtain course record completion data for the purpose of integrating the data into an existing campus system.
Marsh eRoom	An online tool for OP Risk Services partners and vendors who participate in the monthly Risk Services “All Hands” meetings to track and update projects and post documents.
Occupational Health Surveillance System (OHSS)	OHSS is a system for Principal Investigators (PIs) and their staff to submit a health surveillance survey. The clinic physician reviews the survey and determine staff fitness to perform the work.
Point N Click (PNC)	An electronic medical records system in support of Student Health clinics at 10 UC Campuses
Power DMS	A system for law enforcement at UC Campuses to track required trainings to ensure compliance.
RL Solutions	An incident reporting system for the medical centers.
Settlement Authorization Request (In Development)	Online claims settlement approval process for Risk Services related claims that follows Regents Policy 4105.
ServiceNow	The ERM incident and project portfolio management system.
Stored Information Retrieval (SIR)	SIR is the Stored Information Retrieval System.

System	Description
Suite of Environmental Health & Safety Systems (UCEHS) • Biosafety Information Online (BIO) • Chemical Inventory System (CIS) (Coming Soon) • Lab Audit System (Coming Soon) • Online Tag Program (OTP) (Coming Soon) • RADiCAL System (Coming Soon)	The BIO system automates the Biological Use Authorization process and manages the documentation required for use of viruses, bacteria and recombinant DNA. CIS collects information related to chemicals to assist with regulatory compliance in the following areas: Cal/EPA, Fire Codes, PA, Cal/OSHA and CUPA. The Lab Audit System is a system that will automate tracking laboratory safety processes. OTP is a web based system that provides automated hazardous waste tracking and tag generation. The system enables PIs/Researchers to create tags with the required fields to track hazardous waste for pick up when the accumulation time is reached or expired. RADICAL is a system for for PIs who work with chemicals to perform Chemical Risk Management. It allows them to determine banded safety operating parameters or if a detailed SOP is needed.
UC Action	UC Action is designed to automate follow up and corrective actions. The system supports the Retrospective Review process for claims exceeding \$50K threshold.
UC Forms	UC Forms enables rapid development of forms for capturing data for relevant business processes. It also enables the migration to paperless business processes.
UC Plan (TMI) • Budget Development System (BDS) • Capital Markets • Capital Projects • RGPO	BDS was implemented at UCOP to allow collaborative and effective budget planning and analytical reporting. Capital Markets , the online Month-End Funding platform, is being targeted for rollout in 2013. Capital Projects is a comprehensive planning tool for large scale construction across all campuses within the UC system. RGPO will be used as a grants administration database.
UC Ready	UC Ready is a continuity planning tool designed to help the University resume its critical operations following an event/disruption of any size or type.
UC Resilient	UC Resilient is a continuity planning tool designed specifically for use by front-line teaching and research units.
UC RiskWorks (also known as Exigis)	UC RiskWorks provides tracking of certificates of insurance received from vendors/contractors. It also tracks certificates of insurance to verify the UC's self-insurance coverage.
UC SharePoint	UC wide Intranet.
UC Tracker	UC Tracker is a web-based tool that facilitates the review and documentation of key department controls.
UC Travel Assistance • Field Operations Planner • iJet • UC Trip Planner • UC Tripss	The Field Operations Planner is a travel planning system that helps UC travelers with operations abroad to address potential risks associated with field research and foreign operations. The system creates a customized field/foreign operations plan, which is available to the researchers as they travel to review and address risks prior to departure. iJet provides real-time intelligence and travel alerts designed to keep travelers well informed throughout their foreign travel, based on their individual itineraries. UC Trip Planner Provides an overview of the country of destination plus security briefs, health briefs and in country cultural country customs for the U.C. traveler to consider before travelling. UCTRIPSS allows UC students, faculty and staff to register when they are traveling out of state on behalf of the university. The system provides the traveler with an insurance card that contains a phone number to obtain help or receive guidance in the event they are in troublesome situations while away.