

# **Undergraduate Access to the University of California After the Elimination of Race-Conscious Policies**



**University of California – Office of the President  
Student Academic Services  
March 2003**



## **Undergraduate Access to the University of California After the Elimination of Race-Conscious Policies**

This report<sup>1</sup> describes the experience of the University of California in developing and implementing race-neutral undergraduate<sup>2</sup> admission and outreach policies and programs during the period 1995 through 2002.

### **Executive Summary**

As one of the nation's leading public research universities, the University of California offers an excellent educational experience that is highly sought after by California's most talented students. By state policy, only the top one-eighth of California's high school graduates are considered eligible for the University and some campuses can admit less than a quarter of those fully qualified applicants who apply. At the same time, the University remains a tax-supported land-grant institution with a deep commitment to extending the benefits of its educational programs and resources to the full breadth of California's population.

The experience of the University of California over the past seven years indicates that in a highly selective institution, implementing race-neutral policies leads to a substantial decline in the proportion of entering students who are African American, American Indian, and Latino. At UC, these declines have been partially mitigated by programs designed to increase enrollments of students from low-income families, those with little family experience with higher education, and those who attend schools that traditionally do not send large numbers of students on to four-year institutions. Increases in the numbers of underrepresented<sup>3</sup> minority students graduating from California high schools, combined with substantial expansion of enrollment capacity at several UC campuses, have led to overall increases for some groups within the University of California as a whole. However, underrepresented students remain a substantially smaller proportion of those admitted to and enrolled at the University's most selective campuses—UC Berkeley and UCLA—than they were before the elimination of race-conscious policies. Additionally, the gap between the percentage of underrepresented minority students graduating from California high schools and the percentage enrolling at the University of California has widened.

During the 1970s and 1980s, the University pursued an aggressive program to provide access to the full range of California's high school students and to racially and ethnically diversify its campuses. By and large, this effort was effective in enrolling substantial numbers of underrepresented minority students, particularly at UC Berkeley and UCLA. However, beginning in the late 1980s, increasing enrollment demand at several of the more selective

---

<sup>1</sup> This report prepared by Student Academic Services, UC Office of the President, Dennis J. Galligani, Ph.D., Associate Vice President. Principal author Nina Robinson, with assistance from Kyra Caspary, Veronica Santelices, Saul Geiser, Roger Studley, Charles Masten, Neal Finkelstein, Stephen Handel, Robert Tacconi, Liz Tamayo, and Scott Bruce.

<sup>2</sup> This report focuses on undergraduate access, both because of space limitations and because graduate admission to the University of California is a highly decentralized process not easily summarized or characterized.

<sup>3</sup> Historically the University of California has classified as "underrepresented" students from groups that collectively achieved eligibility for the University (see page 4) at a rate below 12.5 percent. These include African Americans, American Indians, and Chicano/Latinos and the terms "underrepresented" and "underrepresented minority" are used throughout this report to denote students from these groups.

campuses led to slower rates of growth in underrepresented minority enrollments. This slowdown came at the same time that students from these groups were increasing rapidly as a proportion of California's high school graduates.

In 1995 and 1996, the UC Board of Regents and the voters of the State of California adopted measures eliminating race-conscious practices in University admissions and in other areas. Although these measures did not go into effect until the entering undergraduate class of 1998, the University saw an immediate drop in applications from African American, American Indian, and Latino graduates. This drop, along with lower enrollment rates among these students, led to an immediate reduction in the absolute numbers, as well as the proportion, of these students in the University's freshman class. This decline intensified in 1998, when race-conscious admission policies were eliminated and admission rates for underrepresented students declined on all campuses. That year, the proportion of underrepresented students in the admitted class dropped on every campus, and by more than 50 percent at UC Berkeley and UCLA.

In the five years since race-conscious policies were eliminated, the University has adopted a number of strategies designed to enhance the academic preparation of UC students and to maintain access for low-income students, those from educationally disadvantaged families and schools, and those from underserved geographical areas of the state. These include:

- expansion of outreach to, and educational partnerships with, K-12 schools, designed to increase preparation for all students and address the achievement gap between students from different backgrounds;
- expansion of the criteria the University employs to define academic achievement;
- implementation of the "Eligibility in the Local Context" (ELC) program, which seeks to identify and enroll the top 4 percent of students in all of California's high schools, including rural and urban schools that have not traditionally sent significant numbers of students to the University;
- expansion of the University's enrollment of community college transfer students, combined with enhanced outreach and academic support to students enrolled in community college;
- adoption of the Dual Admissions Program (DAP) (to be implemented in 2003), which seeks to further increase community college transfers by extending a guarantee of admission to students who graduate in the top 12.5 percent of their high school class and successfully complete lower division work at a California community college;
- implementation of the comprehensive review admission policy, which encourages UC campuses that cannot admit all UC-eligible applicants to broaden the conception of merit embodied in their selection policies and to more fully review each applicant; and
- replacement of the admission test battery currently required by the University with tests that are more closely related to the high school preparatory curriculum and that send a clear message that the University will use admissions tests to identify students who have taken

challenging courses and done well in them, rather than to measure undefined notions of “aptitude” (to be implemented in 2006).

Of the programs already implemented, each is showing success at meeting its multiple goals. And it is reasonable to conclude that these programs have made a positive contribution in the past several years to growth in applications, admissions, and enrollment of African American, American Indian, and Latino students. For Fall 2002, the actual number of enrolled underrepresented freshmen exceeds 1995 levels. And, although the proportions of underrepresented applicants, admitted students, and enrolled freshmen remain lower than in 1995—as well as substantially below their proportion in California’s high school graduating class—all campuses have seen these proportions increase in recent years.

## **I. The California Context**

### **A. The University of California Environment**

The University of California is distinguished by several factors that combine to make it unique among public universities in the nation. First among these is the selective nature of the institution: admission to the University is restricted by state policy to the top one-eighth of the state’s graduating seniors and UC has sole authority among public institutions in the state to grant the Ph.D. and certain graduate and professional degrees. Thus, admission to UC is reasonably seen as a particularly important entrée to the social and financial status that higher education conveys. At the same time, the University of California is also a land-grant institution and its mission has always been to extend these benefits by providing access to the full breadth of California’s population.

A second factor that distinguishes UC is the complexity of its admissions structure. The Master Plan for Higher Education of the State of California mandates that the University should educate the “top one-eighth” of the high school graduating class in California.<sup>4</sup> To identify these students, the University of California promulgates minimum *eligibility requirements* that both specify a floor of preparation needed to pursue study at UC and also function as an entitlement: anyone who meets these requirements is guaranteed a place at UC—although not necessarily at the campus nor in the major of his or her choice. At the same time, because demand for admission exceeds enrollment capacity at most UC campuses, the campuses over the years have developed *selection criteria* by which to choose which UC-eligible applicants they will admit. These criteria function as a second, and generally more demanding, set of requirements that applicants to most of the campuses must meet. Unlike the eligibility requirements, which are uniform across the system, both the criteria and the processes that individual campuses employ to select among eligible applicants vary somewhat, although each campus must comply with a prescribed set of systemwide criteria and process guidelines. The University’s eligibility criteria, which determine who is admitted to the University as a whole, have always been entirely race-neutral. From the 1960s through 1997, individual campus selection policies employed race-conscious criteria, the nature and degree of which varied from campus to campus.

---

<sup>4</sup> Periodic studies by the California Postsecondary Education Commission assess whether current eligibility standards match the top 12.5%. In response these findings, the university adjusts eligibility criteria (making them more stringent or more lenient as needed) so as to return to capturing 12.5% of high school graduates.

Finally, UC's admissions environment is made more challenging by the complex and rapidly changing demographics of the state of California. In many states in the south, east, and midwestern portions of the country, questions about affirmative action focus largely on opportunities for whites versus blacks. California, on the other hand, has had a large and well-established Latino community since its inception and substantial numbers of Asian Americans for more than a century. These long-standing Latino and Asian American populations have been joined in the last several decades by rapidly increasing populations of Asian and Latin American immigrants. California is currently a "minority-majority" state, with whites constituting slightly less than half of the total population. Latinos currently represent a majority of new births and are projected to constitute a majority of the state's population by 2020.

The different ethnic and racial communities that make up California's population vary substantially in terms of income and education level. In particular, California's Asian American population tends to be well educated and considerably more likely to pursue higher education, regardless of income. In contrast, African American and Latino students tend to be from lower income families that are less likely to have had previous experience with higher education. On average, students from these groups have less access to educational resources and lag in academic preparation. Studies of the rates at which high school graduates from these different groups meet the University's eligibility standards indicate that whites are the only group which tends to achieve eligibility at roughly the one-eighth (12.5 percent) rate specified in the Master Plan.<sup>5</sup> Fully one-third of Asian American high school graduates are UC-eligible, while rates for African Americans and Latinos are lower than 5 percent.

**Table 1: Population, Income, Education, and UC Eligibility by Ethnicity**

	United States	California					
	Percent of US Population, Census 2000*	Percent of California Population, Census 2000*	Median Household Income, 2000**	Percent with BA or Higher, 2000**	Percent of Public K-12 Enrollment, 1999-2000	Percent of Public High School Graduates, 2000	UC Eligibility Rate, 1996
African American	12.3%	6.6%	\$39,726	17.2%	8.5%	7.3%	2.8%
Indian/Alaskan Native	0.7%	0.5%	\$38,547	11.4%	0.9%	0.9%	NA
Asian American	3.7%	11.1%	\$61,383	40.9%	11.2%	14.7%	30.0%
Chicano/Latino	12.3%	32.2%	\$35,980	7.7%	42.3%	32.6%	3.8%
White	69.1%	46.6%	\$65,342	33.8%	37.2%	44.6%	12.7%
Other	1.8%	3.1%	\$34,079	8.9%	NA	NA	NA
All	100.0%	100.0%	\$53,025	11.2%	100.0%	100.0%	11.1%

Sources: Population, Income and Education, Census 2000 Summary File 3  
 High School Graduates, The California Department of Finance 2002 Series  
 UC Eligibility Rates, The California Postsecondary Education Commission 1996 Eligibility Study

\* Following UC convention, African American includes African Americans of Hispanic ethnicity.

\*\* For income and education, race and ethnicity categories are not mutually exclusive. All race categories include individuals of Hispanic ethnicity, and Hispanic ethnicity includes individuals of all races.

<sup>5</sup> "Eligibility of California's 1996 High School Graduates for Admission to the State's Public Universities: A Report of the California Postsecondary Education Commission," December 1997. Available at: <http://www.cpec.ca.gov/CompleteReports/1997Reports/97-09.pdf>

## B. University of California Admissions Prior to 1995

Until the mid-1980s, the University's admission policy was driven largely by its eligibility guidelines, which specify a number and distribution of college preparatory courses that applicants must complete, as well as a combination of grades in those courses and admission test scores that students must achieve.<sup>6</sup> Applicants applied to a single campus and those who completed these requirements had a strong chance of being admitted.

Beginning in the 1970s and increasingly throughout the early 1980s, campuses that could not accept all UC-eligible applicants "re-directed" some applications to other campuses. In 1971, the University promulgated guidelines that specified such campuses should admit 50 percent of their admitted class on the base of academic criteria and the other 50 percent following a "careful review" involving "the exercise of judgment with respect to each individual applicant" and considering a number of factors, including achievement in non-scholastic areas, as well as hardship and "selective recruitment efforts" directed at minority students. This policy, which came to be known as the "Two-Tier system," was designed in part to ensure that all campuses selected their students from the full range of the applicant pool in terms of academic and other factors.

By the mid-1980s, some campuses were redirecting large numbers of students and, in order to give applicants greater opportunities at multiple campuses, the University implemented the "multiple filing" system. Beginning in Fall 1986, applicants were allowed to submit a single application that would be sent to as many campuses as they specified—each of which would consider the applicant separately. In one year, the number of applications each campus considered increased dramatically, with the effect that the proportion of applicants who were admitted to the more selective campuses dropped precipitously.

To guide campuses in the development of new selection policies needed to handle this increased volume, The Regents in 1988 adopted a Policy on Undergraduate Admissions, which states in part that, "Mindful of its mission as a public institution, the University of California ... seeks to enroll on each of its campuses a student body that, beyond meeting the University's eligibility requirements, demonstrates high academic achievement or exceptional personal talent and that encompasses the broad diversity of cultural, racial, geographic, and socio-economic backgrounds characteristic of California." This was accompanied by new implementation guidelines that clarified that 40-60 percent of the admitted class (a broader range than previously specified) should be admitted based on academic criteria ("Tier 1"), with the remaining group ("Tier 2") admitted on academic and "supplemental" criteria—which were enumerated and included extra-curricular achievements, leadership, and special talents; special circumstances (e.g., low-income, disability, veteran status); and "ethnic identity, gender, and location of residence."

How these guidelines were implemented at the campus level varied by campus and changed over time. Given the large numbers of applications campuses were receiving by the late 1980s—and consistent with the practices of most large public institutions—most campuses favored processes that were entirely or primarily mechanical in nature. Academic qualifications (used to select the first portion of the admitted class) were usually assessed by combining grade point average

---

<sup>6</sup> For details of the University's eligibility guidelines, see <http://www.ucop.edu/pathways/infoctr/introuc/fresh.html>.

(GPA) and test scores into a linear index or formula. “Supplemental” criteria (used to select the second portion of the admitted class) were most often assessed by assigning points to different factors and adding these points to those assigned to academic factors. While some supplemental factors (e.g., family income, family experience with higher education, race/ethnicity, disability, veteran status) could be scored based on machine-readable information in the application, others (e.g., leadership, special talent, extra-curricular achievements) could not. Thus, campuses began to institute review processes that involved professional admissions staff members reading and scoring certain aspects of the application; generally these processes were limited to a portion of those applicants not selected on the basis of academic factors alone.

During the period from 1988-1995, campuses adopted more refined selection processes. For example, rather than using formulas, three campuses developed “matrix” approaches that ranked students on an academic and “supplemental” scale, admitted one portion on the academic score alone, and then admitted the rest by choosing from among the remaining applicants those whose combinations of academic and supplemental rankings were highest. Some campuses also developed more complex approaches to the assessment of academic strength (by considering, for example, the strength of the academic program an applicant pursued or his achievement relative to others from the same school) and increased the proportion of the applicant pool subjected to an individual file review.

During the decade of the 1980s, the University of California made substantial progress in diversifying its freshman class. As shown in the table below, in 1980, underrepresented students constituted just slightly less than 10 percent of the enrolled UC resident freshman class, while these students comprised roughly a quarter of the state’s public high school graduates. By 1990, the proportion of underrepresented freshmen had roughly doubled, to 19.4 percent. During this period, underrepresented students grew to 31.5 percent of California’s public high school graduates, so UC effectively reduced the size of the “gap” between proportional representation among UC freshmen and among high school graduates. This trend began to change in the early 1990s as campuses became increasingly selective. During the five years from 1990 to 1995, underrepresented students’ proportional representation among UC California resident freshmen grew moderately, from 19.4 percent to 21.0 percent. During the same five years, underrepresented students increased from 31.5 percent to 38.3 percent of public high school graduates and the gap between UC freshmen and high school graduates increased from 12.1 to 17.3 percentage points—an increase of 43.0 percent.

<b>Table 2: Underrepresented Minorities as a Percentage of New UC CA Resident Freshmen and CA Public High School Graduates 1980, 1985, 1990 and 1995</b>					
		<b>1980</b>	<b>1985</b>	<b>1990</b>	<b>1995</b>
UC New CA Freshmen Enrollments	Underrepresented	1,686	3,114	3,884	4,625
	Total Freshmen	17,079	19,965	20,020	21,999
	Underrepresented Percent	9.9%	15.6%	19.4%	21.0%
CA Public HS Graduates	Underrepresented	61,653	62,804	74,498	97,683
	All Graduates	242,172	225,448	236,291	255,200
	Underrepresented Percent	25.5%	27.9%	31.5%	38.3%



### C. Provisions of Regents' Resolution SP-1 and Proposition 209

Regents' Resolution SP-1 was adopted by The Regents of the University of California on July 20, 1995.<sup>7</sup> In November 1996 the voters of California passed Proposition 209, a constitutional amendment that eliminated racial preferences in the operation of all state programs, including higher education. Both new policies took effect for undergraduate admissions beginning with the class applying for Fall 1998.

The major thrust of Resolution SP-1 was to eliminate “race, religion, sex, color, ethnicity, or national origin as criteria for admission to the University or to any program of study.” In addition, Resolution SP-1 incorporated several other components that are important to an understanding of its implementation and effects:

- 1) It mandated the establishment of a Task Force on “academic outreach,” charged with developing proposals for “new directions and increased funding” to increase UC eligibility rates for students from disadvantaged backgrounds.
- 2) It requested the Academic Senate to develop new supplemental admissions criteria giving consideration to students who “despite having suffered disadvantage economically or in terms of their social environment...have nonetheless demonstrated sufficient character and determination in overcoming obstacles to warrant confidence that the applicant can pursue a course of study to successful completion.”
- 3) It increased the proportion of the freshman class at each campus to be admitted based solely on academic achievement, from a range of 40-60 percent to a range of 50-75 percent.

Finally, SP-1 considered only admission policies.<sup>8</sup> It did not extend the ban on racial considerations to the targeting of outreach or other programs, nor to race-conscious financial aid. Rather, it left room for race-conscious programs designed to increase both the application rate and the enrollment rate of underrepresented students.

The provisions of Proposition 209, the voter-passed amendment to California's state constitution outlawing the use of these factors in the operation of any state program, have been interpreted somewhat more broadly, to outlaw race-conscious outreach and financial aid. This difference sets California public institutions apart from those in post-Hopwood Texas, where, for example, the University of Texas at Austin notes that it “has effectively compensated for the loss of affirmative action, partly by increasing recruiting and financial aid for minority students.”<sup>9</sup>

---

<sup>7</sup> Resolution SP-1 was rescinded by The Regents in May 2001. As noted in this section, its provisions regarding race-neutral admissions are subsumed within Proposition 209.

<sup>8</sup> A companion resolution, SP-2, dealt with preferences in hiring and contracting.

<sup>9</sup> “The University of Texas at Austin's Experience with the “Top 10 Percent” Law,” University of Texas press release, January 16, 2003. Available at: [http://www.utexas.edu/admin/opa/news/03newsreleases/nr\\_200301/nr\\_top10percent030116.html](http://www.utexas.edu/admin/opa/news/03newsreleases/nr_200301/nr_top10percent030116.html)

## **II. University of California Admissions and Outreach 1995-2003**

Beginning during the two-year period between the passage of Resolution SP-1 and implementation of SP-1 and Proposition 209 and continuing to the present, the University has taken action to strengthen K-12 education, enhance student preparation for higher education, and implement race-neutral initiatives designed to strengthen its ability to attract, admit, and enroll an undergraduate student body that is both academically well prepared and reflective of the broad diversity of California. Each of these is discussed below.

### **A. The Task Force on Undergraduate Admissions Criteria**

Immediately following the passage of Regents Resolution SP-1 in 1995, a joint faculty-administration task force was formed to revise the University's undergraduate admission policies. The Task Force report, issued in December 1995, reaffirmed the traditional values of UC's admission policy, including its long-standing commitment both to students of "high academic achievement or exceptional personal talent" and to admitting a student body that "encompasses the broad diversity of cultural, racial, geographic, and socio-economic backgrounds characteristic of California" (the language of the 1988 Policy). The Task Force recommended:

- Expansion of the University's "academic" criteria to provide a more comprehensive assessment of academic achievement and potential. The prior guidelines had included only four academic criteria (grade point average, test scores, number of academic courses completed, and number of honors-level courses completed), all of which were entirely quantitative. The Task Force recommended adding consideration of such factors as quality of the senior year program, marked improvement in academic performance, and the quality of performance relative to the educational opportunities available in the applicant's school.
- Refinement and expansion of the "supplemental" criteria to encompass a broader range of personal talents and achievements, including achievement in outreach programs and other special projects or programs, and "academic accomplishments in light of the applicant's life experiences and special circumstances."

In addition, the Task Force commented on the need for a review of "the methods used for assessing academic performance, beyond utilizing criteria such as GPA and standardized test scores" and suggested that "the selection process could be altered in the future to include a more comprehensive approach to reviewing students' academic accomplishments and personal backgrounds."

Following the adoption of the new *Guidelines for Implementation of University Policy on Undergraduate Admissions* proposed by the Task Force, faculty on each campus were charged with developing new admission policies eliminating consideration of race and ethnicity; increasing, if necessary, the proportion of applicants admitted on academic criteria alone; and incorporating the new selection criteria. Several campuses proposed not only new criteria, but substantially different processes and approaches. These included:

- Expansion of academic criteria. Several campuses that previously had used only grades and test scores to identify applicants to be admitted on “academic criteria alone” expanded their criteria to include such factors as strength of the academic program (including the proposed senior year course load), marked improvement in academic performance, and academic achievements outside the classroom.
- Increased attention to low-income, first-generation college students and to those in low performing schools. All of the campuses expanded the weight given in their “Tier 2” review to such factors as socio-economic status (defined by various combinations of family income, parental occupation, and parental education level). In addition, many added as a factor attendance at a disadvantaged high school—usually defined by average scores on standardized tests or low rates of graduation, UC eligibility, or college attendance.
- Adoption of qualitative scoring systems. Several campuses expanded their use of review processes that did not involve formulas or fixed weights for specific factors. For example, the Berkeley campus adopted a qualitative process that assigned academic and “comprehensive” scores to each applicant, based on the judgments of professional admissions readers. UCLA and UC Irvine also adopted qualitative processes without fixed weights in portions of their processes.
- Increased reading of applicant files. All campuses increased the proportion of their applicant pool whose files were individually read to determine all or part of the applicant’s scores.
- Consideration of performance relative to one’s peers in the evaluation of academic achievement. Prior to 1998, only UCLA had considered as part of its academic review how well an applicant performed relative to others from the same school—who had presumably had access to similar curricula and other resources. In revising their policies in 1996 and 1997, both UC Santa Barbara and UC Berkeley added this high-school level review to their process for determining academic achievement.
- Consideration of achievement in outreach and other academic development programs. All of the campuses incorporated into their process special consideration for students participating in University-sponsored outreach programs, particularly for those whose applications indicated a sustained level of participation or high level of achievement in these programs.

## B. The Outreach Task Force and Expansion of Educational Outreach

The first recommendation in Resolution SP-1 exhorted the University to address more aggressively issues related to unequal access to rigorous curricula and high quality instruction in California’s public schools. In 1997, the Outreach Task Force, which had been formed to develop a comprehensive approach to both low eligibility rates for students from underrepresented groups and the challenges those applicants faced in being admitted to the University’s most selective campuses, issued its final report.<sup>10</sup> The report recommended a four-prong strategy:

---

<sup>10</sup> The full report of the Outreach Task Force, “New Directions for Outreach: Report of the University of California Outreach Taskforce” July 1997, can be found at: <http://www.ucop.edu/acadaff/otf/otf.html>

- Enhancement and expansion of academic development (student-centered) programs;
- Development of “school-centered” outreach programs, partnering with schools to effect whole-school reform;
- Expansion of informational outreach; and
- University research and evaluation to guide the outreach work.

Fueled by substantial new funding from the state Legislature, the University dramatically expanded its outreach efforts between 1998 and 2001, consistent with the recommendations made by the Outreach Task Force in 1997. Programs—which had been in place on all campuses for many years—that worked with individual students to increase academic preparation and motivate students to seek higher education expanded both the number of students they served and the depth of the programs they provided. In addition, the University established the School/University Partnership Program, through which UC campuses expanded their relationships with K-12 schools and established new ones. These partnership programs were designed to bring to bear a range of systemic educational strategies—teacher professional development, curricular reform, educational leadership, mentoring and direct instruction, and technology-based initiatives, among others—at specific school sites.

In 1999, at the request of Governor Davis, UC expanded the focus of its outreach work to include substantial professional development programs for teachers. Building on the infrastructure of the well-established California Subject Matter Projects, a new initiative was developed to train 70,000 teachers annually. These programs, the California Professional Development Institutes, were rapidly deployed by the University of California in cooperation with the California State University and other higher education partners to improve teacher quality in core areas of the State’s standards-based curriculum—English/Language Arts and mathematics—with additional programming for teachers working with English learners.

### C. Eligibility in the Local Context

Following the adoption of Resolution SP-1 and Proposition 209, elected officials as well as some University faculty called on the University to develop a “percent plan” analogous to that implemented in Texas following the Hopwood decision. In late 1997, a statewide study<sup>11</sup> indicated that only 11.1 percent of California’s high school graduates were achieving UC eligibility. Faced with the need to expand eligibility back to 12.5 percent, the University’s Board of Admissions and Relations with Schools (BOARS) recommended filling the gap with students from the top 4 percent of their high schools—a program eventually entitled “Eligibility in the Local Context” (ELC). Projections indicated that the number of students newly eligible through ELC would be equivalent to 1.4 percent of the high school graduating class, bringing the number of UC-eligible graduates back to the 12.5 percent specified in California’s Master Plan for Higher Education.

---

<sup>11</sup> 1996 Eligibility Study, op. cit.

Although the ELC program is often grouped with other “percent plans” used in Texas and Florida, it differs from these plans in important ways. ELC students tend to be very highly qualified academically—partly because 4 percent represents only a handful of students from each school (most of whom would be eligible in a statewide context) and partly because of the way the program was designed and implemented. ELC students are required to complete the entire course pattern mandated by the University and to take the full battery of UC-required admission tests (although their scores are not used to determine their eligibility). They are identified during the summer following their junior year, based on a review of the transcripts of the top 10 percent of students in California’s high schools. (ELC is not available to out-of-state applicants.) This review analyzes whether students are on track to achieve UC eligibility (based on the number and pattern of UC preparatory courses completed) and calculates their GPA on those academic courses alone. Based on this review, the top 4 percent from each school are deemed eligible, but still required, as noted above, to complete the remaining requirements.

ELC has evolved quickly into a successful and popular program in large part because it functions to motivate students to achieve and apply and because it provides the University and its individual campuses with a way to contact these students early in their senior year and stay connected with them throughout the application process. Presumably some proportion of the students identified as ELC would not have finished the eligibility requirements or would not have applied to UC. The ELC identification process alerts these students that eligibility is within reach and provides a clear and inviting path to UC enrollment. As a result, *virtually all of the ELC students attain full statewide eligibility*. The positive message the ELC program sends is amplified by individual campuses, several of which aggressively recruit ELC students during their senior year and all of which include in their admission policies additional consideration for ELC applicants.

#### D. Expansion of the Transfer Function

California enrolls a higher proportion of post-secondary students in two-year institutions than any other state and access to the University through these institutions has long been a major tenet of state education policy. The importance of transfer as a path to four-year institutions was codified in the 1960 Master Plan, the implementing legislation for which set as a target that a minimum of 60 percent of the University’s undergraduate enrollment should be at the upper division—thus mandating a large and robust transfer function.

With the goal of expanding access for applicants who are not UC-eligible at the time they graduate from high school or who choose for a variety of reasons to begin their college careers in a two-year institution, the University and the State of California in 1997 signed a Memorandum of Understanding (MOU) in which UC pledged to increase by one-third the number of students that transferred to its campuses from California community colleges. Building on the initial success of the MOU, the University expanded its commitment in 1999, by agreeing to increase transfer enrollment by 50 percent. To accomplish this goal, the University has expanded its community college outreach work and asked each campus to increase the number of transfer students it enrolls.

#### E. Dual Admissions

To further expand access for students who choose to attend community colleges, UC President Atkinson proposed and the Regents in July 2001 approved the Dual Admissions Program (DAP), which will allow top-performing California high school students to become eligible to attend a UC campus by first attending a California community college. Under DAP, UC will grant admission to students in the top 4 to 12.5 percent of the class in their own high school, with the understanding that they first complete a transfer program at a California community college in their freshman and sophomore years of college. Students identified in the top 4 to 12.5 percent of their high school class will receive an admissions offer from both a California community college and a UC campus during their senior year of high school. After successfully fulfilling their freshman and sophomore requirements at the community college, these students will transfer to a UC campus to complete their upper-division studies and earn a UC degree. Students who agree to participate in DAP will have up to four years to complete their freshman and sophomore requirements at a community college before transferring to a UC campus.

The University of California plans to stay in close contact with students who agree to participate in DAP while they attend a California community college. The success of the program will hinge largely on the degree to which the University maintains regular contact with these students, assuring that participants complete their community college coursework and are prepared for transfer to a UC campus.

Under the current implementation plan, high school students eligible for DAP will be identified and notified in summer and fall 2003. If these students apply for freshman admission to UC, a dual admission offer would permit them to enroll at a California community college to complete lower division preparation requirements and transfer to a specific UC campus, conditional on their fulfillment of campus- and major-specific course requirements and academic performance criteria for transfer students. It is anticipated that the first cohort of DAP students will enter community college in the Fall 2004 term and then transfer to UC in Fall 2006.

#### F. Comprehensive Review

As noted earlier, the 1995 Task Force on Undergraduate Admissions Criteria had suggested that “the selection process could be altered in the future to include a more comprehensive approach to reviewing students’ academic accomplishments and personal backgrounds.” In February 2001, President Atkinson wrote to the Academic Senate, requesting that they consider a policy under which “campuses move away from admissions processes focused on quantitative formulas and instead adopt evaluative procedures that look at applicants in a comprehensive, holistic way.”<sup>12</sup>

In November 2001, the Regents approved BOARS’ recommendation for the Comprehensive Review of freshman applications at campuses that cannot accommodate all UC-eligible applicants. Comprehensive Review left in place the criteria developed by the 1995 Task Force (which had been revised once, to add Eligibility in the Local Context as an academic criterion), but eliminated the “two-tiered” process that had been in place for roughly thirty years. BOARS’

---

<sup>12</sup> Richard C. Atkinson to Academic Council Chair Michael Cowan, February 15, 2001.

statement of principles for Comprehensive Review<sup>13</sup> encourages campuses to evaluate all eligible applicants on a broad array of academic and other criteria. Decisions on the weights of the various criteria are left to the discretion of faculty on individual campuses, with the clear understanding that academic criteria will continue to predominate.

In implementing the new policy, every campus eliminated the historical practice of setting aside a particular proportion of the admitted class for students admitted on a narrow range of academic criteria and extended its review process to include all eligible applicants. In addition, all campuses increased the number of criteria they consider and many increased the contextual information about students' educational and personal circumstances that they review. At the same time, considerable variety still exists in the degree to which campuses incorporate qualitative processes and rely on fixed weights assigned to specific criteria. The University fully expects that comprehensive review will continue to evolve at the six campuses that now use it, as well as expanding to other campuses as they are no longer able to accommodate all UC-eligible applicants.

### G. Admission Testing Policies

Since the late 1960s the University's eligibility requirements have included the submission of scores from four standardized admissions tests: the SAT I or ACT, and three SAT II achievement tests in specific subject areas. The Board of Admissions and Relations with Schools began studying options for modifying this requirement in the mid-1990s. In 1997, they recommended changing the weight of the component parts of the testing requirement to reduce the overall weight of the ACT/SAT I relative to other tests. (High school grades remain the dominant component of the Eligibility Index.)

BOARS' work on admissions tests acquired a new urgency in February 2001, when—in the same letter that suggested adoption of more comprehensive review policies—President Atkinson requested that the Academic Senate consider changing UC's eligibility criteria to “require only standardized tests that assess mastery of specific subject matter rather than undefined notions of ‘aptitude.’” This request was quickly followed by a policy address in which Atkinson called for the elimination of the SAT I in UC admissions.<sup>14</sup>

In response to Atkinson's request, BOARS commissioned research that suggested that achievement-type tests such as the SAT II were slightly better predictors of student performance and had the benefit of a closer relationship to actual college preparatory curricula. Armed with this research<sup>15</sup>, BOARS in January 2002 recommended that the University replace its currently required test battery with a “core” achievement-type test covering the fundamental disciplines of language arts (including a writing sample) and mathematics, and two additional achievement

---

<sup>13</sup> Both the selection criteria and BOARS' principles for comprehensive review are included in the University's *Guidelines for Implementation of University Policy on Undergraduate Admissions*, which can be found at: <http://www.ucop.edu/senate/reports/guidelines.pdf>.

<sup>14</sup> “Standardized Tests and Access to American Universities — The 2001 Robert H. Atwell Distinguished Lecture,” delivered at the 83rd Annual Meeting of the American Council on Education, Washington, D.C. (February 18, 2001). Available at: <http://www.ucop.edu/pres/comments/satspch.html>.

<sup>15</sup> Geiser, Saul with Roger Studley. “UC and the SAT: Predictive Validity and Differential Impact of the SAT I and SAT II at the University of California” October 2001. Available online at: [http://www.ucop.edu/sas/research/researchandplanning/pdf/sat\\_study.pdf](http://www.ucop.edu/sas/research/researchandplanning/pdf/sat_study.pdf)

tests in specific subject areas.<sup>16</sup> This proposal was amplified in October 2002, when BOARS issued a second discussion paper recommending that students be required to submit supplementary subject matter test scores in two fields from among the six covered in the University's "a-g" required course pattern.<sup>17</sup>

In April 2002, the College Board announced it was recommending substantial changes to the national SAT I designed to make it more curriculum-based, eliminate certain question types (which BOARS had found incompatible with the principles they had developed to guide the selection of admissions tests), and to add a writing examination. ACT, Inc. subsequently announced its intention to add an optional writing component to its existing ACT exam, which BOARS had already found sufficiently curriculum-based to be consistent with its principles. Thus, while University faculty continue to work with both agencies on the specifications of the new tests under development, it is reasonable to expect that this work will proceed successfully and both tests will be accepted by the University for applicants to the Fall 2006 entering class.

Although the impact of these changes to the admissions tests will not be felt for several more years, BOARS believes that the new tests will be both more straightforward and less intimidating to students, will provide more and better diagnostic information to help students understand where they need additional preparation, and will send a message to both students and schools that the best way to prepare for the University is to complete a rigorous program of college preparatory courses and do well in those courses.

### **III. Outcomes**

#### **A. Trends in Applications, Admissions and Enrollment of Underrepresented Students, 1995-2002<sup>18</sup>**

For the UC system as a whole, and on most campuses, applications, admissions, and enrollment of underrepresented students follow a similar pattern over the period from 1995-2002. As the following display indicates, applications from underrepresented students fell immediately following the decision to adopt Resolution SP-1 and this resulted in drops in admission and enrollment as well. Admission and enrollment of underrepresented students dropped further in 1998, when SP-1 and Proposition 209 went into effect. In the years since 1998, these numbers have increased, although as the following text describes, patterns have differed at various campuses.

---

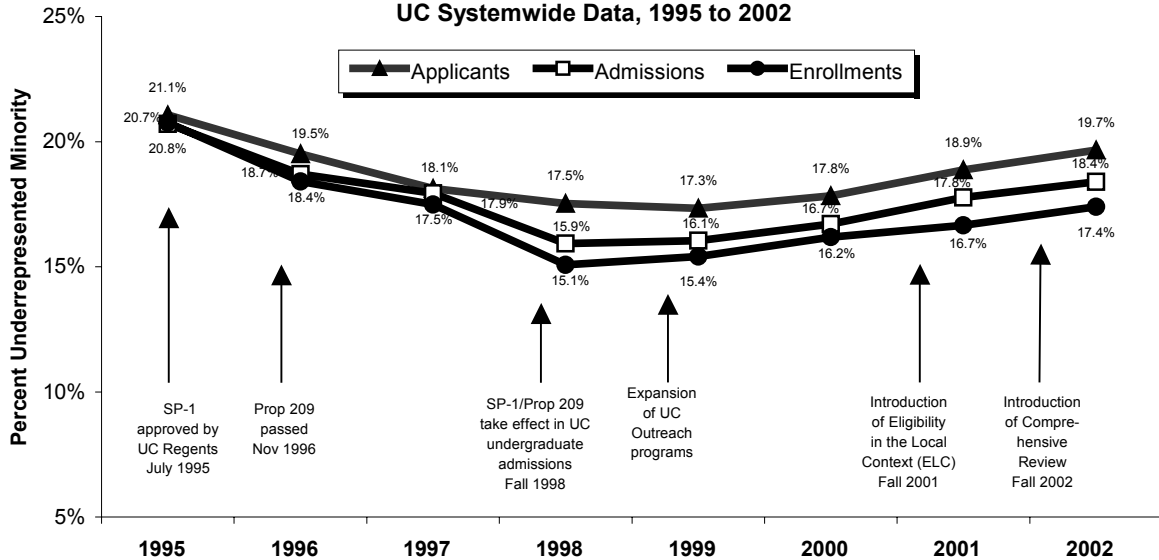
<sup>16</sup> "The Use of Admission Tests by the University of California" can be found at <http://www.ucop.edu/news/sat/boars.pdf>

<sup>17</sup> "Proposal for the Use of Supplemental Subject Matter Tests in the UC Admissions Process" is available at <http://www.ucop.edu/senate/suptests.pdf>

<sup>18</sup> All data provided in this section are derived from Table A contained in the appendix. Unless otherwise noted, data are for the fall term only and include out-of-state residents and international students. Systemwide data are unduplicated; applicants who apply to multiple campuses are reported in each campus's data. Proportional data regarding ethnicity are reported on the base of domestic students only because race and ethnicity data are not collected from international applicants. Other conventions regarding the reporting of data are described in the introduction to Table A.



**Underrepresented Minority Applicants, Admissions and Freshman Enrollments  
Before and After Elimination of Race-Conscious Policies in UC Admissions  
UC Systemwide Data, 1995 to 2002**



*Note:* Underrepresented minorities are American Indian, African American, Chicano, or Latino students. Following longstanding UC reporting practices, URM percentages have been calculated as a fraction of all fall first-time freshman domestic students. This will result in minor differences with other UC publications that report on CA resident students only.

### Freshman Applications

Fall 1995. For the class entering UC in Fall 1995, the University of California received 51,336 freshman applications, 88.3 percent of which were from California residents. Of the total freshman applications, 21.1 percent were from underrepresented minorities. At the campus level, both actual counts and the ethnic distribution of the students varied, with UCLA, UC Berkeley, and UC San Diego receiving the greatest number of applications (25,458, 22,811, and 21,503 respectively) and the Santa Cruz and Riverside campuses receiving the fewest (11,361 and 9,773, respectively). Proportional representation of African American, American Indian, and Latino applicants ranged from 25.2 percent of total applications at UC Riverside to 16.0 percent at UC San Diego. At the Berkeley and Los Angeles campuses, these percentages were 18.9 and 22.0.

1996-97. Although the removal of race-conscious policies for undergraduate applicants to the University of California did not take effect until the class entering in Fall 1998, public discussion of, and attention to, the issue of affirmative action affected UC applications immediately. For the classes entering in Fall 1996 and Fall 1997, total applications rose (from 51,336 in 1995 to 56,401 in 1997), while those from underrepresented students fell (from 10,490 in 1995 to 9,858 in 1997), meaning that, as a proportion of the total, underrepresented applicants fell from 21.1 to 18.1 percent in two years. Similar patterns were observed at the campus level. On the Davis, Irvine, Los Angeles, Riverside, Santa Cruz, and San Diego campuses, applications from underrepresented students fell both in absolute numbers and as a proportion of the total. On a few campuses (Berkeley and Santa Barbara), overall growth in applications led to a small

increase in absolute numbers for underrepresented students, but these applicants continued to decline as a proportion of the total.

1998-2002. Over the five years since race-neutral policies went into effect at UC, the trends described above have slowly reversed themselves. At the systemwide level, the overall number of applications received has continued to increase every year (to nearly 75,000 in 2002). As a proportion of the total, underrepresented applicants declined further in 1998 and 1999 (to 17.3 percent), but in absolute numbers they began to increase in 1998 and surpassed the 1995 figures in 1999. For Fall 2002, underrepresented applicants represented 19.7 percent of the total, surpassing their proportions in the two years immediately preceding the implementation of Proposition 209, but not quite reaching the 1995 percentage of 21.1. Preliminary counts of applications for Fall 2003 (submitted in November 2002) indicate that this will be the first year in which the proportion of underrepresented applicants exceeds the 1995 levels. These increases are consistent with demographic change among California high school graduates: since 1995, students from underrepresented groups have grown from 38.3 to 41.6 percent of California's graduating public high school seniors.<sup>19</sup>

At the campus level, the trend described above is generally evident although some campuses have been quicker to reach and even surpass earlier application levels, while others suffered deeper declines and have yet to recover. All UC campuses now receive more applications from underrepresented students than they did in 1995. In addition, at two, UC Riverside and UC San Diego, underrepresented students comprised a larger proportion of the applicant pool in 2002 than they did in 1995: 26.8 versus 25.2 percent at Riverside, and 16.9 versus 16.0 percent at San Diego. On most of the other six campuses, the proportion of underrepresented applicants hit a low in 1999, the first year following implementation of race-neutral policies, and has climbed since then, but has yet to reach 1995 levels. At UC Davis and UC Santa Barbara, declines were relatively mild and have mostly been recovered: underrepresented students declined as a percentage of the applicant pool by less than three percentage points and the difference between 1995 and 2002 is now less than one percentage point.

Declines on the other four campuses were steeper: 4.3 percentage points at UC Irvine, 4.9 at UC Santa Cruz, and 5.0 at both Berkeley and UCLA. Irvine has since closed the gap between 1995 and 2002 to less than half a point, while the differences at Berkeley, Los Angeles, and Santa Cruz have been slowest to rebound. At Berkeley, underrepresented applicants were 17.4 percent of the total freshman applicants in 2002, up from a low of 13.9 percent in 1999, but still 1.5 percentage points below the 1995 level of 18.9 percent. At UCLA, the 2002 percentage was 20.3, up from 17.0 percent in 1999, but 1.7 points below the 1995 figure of 22.0 percent. At Santa Cruz, the 2002 figure of 19.4 percent was up from 17.2 percent in 1999, but 2.7 points below the 1995 percentage of 22.1.

---

<sup>19</sup> *Number of Graduates from California Public Schools by Ethnic Designation, 1980-81 through 2000-01.* California Department of Education. Available at: <http://www.cde.ca.gov/demographics/reports/statewide/gradste.htm>

	1995		1998		2002	
	Number	% of Total	Number	% of Total	Number	% of Total
Berkeley	4,123	18.9%	4,583	16.0%	6,058	17.4%
Davis	2,790	16.1%	2,858	14.0%	4,363	15.4%
Irvine	3,116	20.2%	3,083	15.9%	5,955	19.7%
Los Angeles	5,408	22.0%	5,645	17.7%	8,582	20.3%
Riverside	2,386	25.2%	2,834	24.0%	6,062	26.8%
San Diego	3,382	16.0%	3,804	13.8%	6,865	16.9%
Santa Barbara	3,475	19.4%	3,928	16.8%	6,452	18.8%
Santa Cruz	2,462	22.1%	2,406	17.6%	4,642	19.4%
UC Total*	10,490	21.1%	10,390	17.5%	14,287	19.7%

### Freshman Admissions

1995. In 1995, the University of California admitted 41,334 of the 51,336 students who applied for freshman admission. Overall, 80.5 percent of UC applicants were admitted to at least one campus. (Since all UC-eligible applicants are guaranteed a place somewhere in the UC system, this means that the remaining 19.5 percent of applicants were probably not UC-eligible.) Of the domestic admitted applicants, 20.7 percent were from underrepresented groups. For UC as a whole, the admit rate for underrepresented students, 80.2 percent, was virtually identical to that for all students—again reflecting that all UC-eligible applicants are admitted to at least one campus. At the campus level, both the percentage of admitted students who were underrepresented and the admit rates for students from different groups varied. Five campuses (Davis, Irvine, Riverside, Santa Barbara and Santa Cruz) were able to admit more than 70.0 percent of their total applicants, while UC Berkeley, UCLA and UC San Diego admitted 38.7, 42.2, and 58.0 percent respectively. In 1995, all campuses included race and ethnicity as factors in the admission process and admit rates for underrepresented students often equaled or exceeded overall admit rates on campuses, though this varied from campus to campus, reflecting both the relative qualifications of applicants from different groups and the nature of the campus admission process.

1996-97. In 1996 and 1997, the two years between announcement and implementation of the elimination of affirmative action in admissions, two major trends affected UC admissions: several campuses became much more selective—meaning that total admit rates dropped on those campuses—and, as noted above, underrepresented applicants declined in absolute numbers and as a proportion of total freshman applicants. At the systemwide level, total admissions grew from 41,334 in 1995 to 44,295 in 1997, and the overall admit rate dropped slightly, from 80.5 to 78.5 percent. In absolute numbers, underrepresented admitted students declined from 8,409 to 7,802. As a percentage of total admits, underrepresented students fell from 20.7 to 17.9 of the admitted freshman class, mirroring their 3 percentage-point decline in the applicant pool. Admit rates for underrepresented students systemwide decreased slightly, from 80.2 to 79.1 percent.

At the campus level, from 1995 to 1997, increases in applications led to declines in overall admit rates on every campus except for Riverside, which was in a period of planned enrollment growth.

Admit rates fell by more than five percentage points at the Berkeley, Irvine, Los Angeles, and Santa Barbara campuses. At UC Berkeley, UC Irvine, and UCLA, admit rates declined for underrepresented students as well and the combination of decreases in both applications and admit rates led to declines in the proportion of the admitted class from underrepresented groups. At UC San Diego and UC Santa Barbara, admit rates increased slightly for applicants from underrepresented groups and these students increased slightly as a proportion of total admits. In terms of the proportions that underrepresented students represented of admitted populations at the campus level, the overall effect of these changes was to compress the range among campuses.

1998. In 1998, the first year in which race-neutral admission policies were implemented at UC, admission rates for underrepresented students and the proportion that these students represented of the total admitted class fell for UC as a system and on every campus. For the system as a whole and at the campuses that can admit all UC-eligible applicants, this decline was relatively modest: from 1997 to 1998, overall admit rates for underrepresented students fell from 79.1 to 71.2 percent systemwide, and from roughly 79 to roughly 73 percent at Riverside and Santa Cruz. At the more selective campuses, declines were much more pronounced: admission rates for underrepresented applicants fell by more than 20 percentage points at UC Berkeley, UC Davis, and UC San Diego, by more than 15 percentage points at UCLA and UC Santa Barbara, and by 8.3 percentage points at UC Irvine. As noted above, these declines in the percentages of underrepresented applicants who were admitted were confounded by declines in the rate at which underrepresented students applied, relative to other students, with the result that underrepresented students fell noticeably from the percentage of the admitted class they represented prior to the decision to eliminate race-conscious policies. These effects were strongest at UC Berkeley and UCLA, where from 1995 to 1999, underrepresented students declined from 26.1 and 26.7 percent of the admitted class to 11.2 and 12.7 percent, respectively—both declines of more than 50 percent.

1999-2002. In the four years since the initial implementation of Proposition 209, freshman admission has been affected by a number of trends that affect the campuses in different ways. UC's total applicant pool has grown substantially; in addition, on average, applicants are applying to more campuses, meaning that all of the campuses have experienced significant increases in the number of applications they receive. For all campuses except Riverside and Santa Cruz, application growth has outstripped increases in capacity, meaning that campuses continue to become more selective every year: since 1995, overall admit rates have fallen by 29 percentage points at UC Santa Barbara, by between 15 and 20 points at UC Berkeley, UC Irvine, UCLA, and UC San Diego, and by 8.3 points at UC Davis. Both UC Berkeley and UCLA now admit less than a quarter of their applicants, UC San Diego admits just over 40 percent, and UC Santa Barbara just over 50 percent.

Consistent with these trends, admit rates for underrepresented students have continued to fall below 1998 levels on all campuses except UC Berkeley and UC San Diego, which have seen slight gains (from 20.2 percent in 1998 to 23.3 percent in 2002 at UC Berkeley and from 34.0 to 34.8 percent at UC San Diego over the same period). At UCLA, admit rates for underrepresented students fell from 24.0 in 1998 to 20.4 percent in 2002, but this was in the context of much sharper declines—from 33.0 to 24.1 percent—for the total population. Despite declining admit rates on the selective campuses, increases in the proportion of underrepresented

applicants have led over the past several years to modest increases on every campus in the proportion of admitted students who are from underrepresented groups. These increases have been greatest at the Berkeley, San Diego, and Los Angeles campuses, where the proportion of underrepresented admitted students increased by 5.3, 4.5, 4.1 percentage points, respectively, between 1998 and 2002.

	1995			1998			2002		
	Number	% of Total	Admit Rate	Number	% of Total	Admit Rate	Number	% of Total	Admit Rate
Berkeley	2,251	26.1%	54.6%	924	11.2%	20.2%	1,406	16.5%	23.3%
Davis	2,267	18.3%	81.3%	1,797	13.2%	62.9%	2,540	14.0%	57.6%
Irvine	2,151	18.9%	69.0%	1,719	14.2%	55.8%	2,645	15.3%	44.3%
Los Angeles	2,833	26.7%	52.4%	1,357	12.7%	24.0%	1,755	16.8%	20.2%
Riverside	1,841	24.7%	77.2%	2,056	21.7%	72.5%	4,629	24.5%	75.3%
San Diego	1,808	14.6%	53.5%	1,292	9.7%	34.0%	2,400	14.2%	34.8%
Santa Barbara	2,620	18.0%	75.4%	2,280	16.0%	58.0%	3,148	17.9%	48.7%
Santa Cruz	2,112	22.5%	85.8%	1,754	16.2%	72.9%	3,485	17.5%	74.9%
UC Total**	8,409	20.7%	80.2%	7,394	15.9%	71.2%	10,677	18.3%	74.3%

\* Admit rate = admits/applicants.

\*\* UC Total is unduplicated count of admits.

## Freshman Enrollments

The rate at which admitted freshman applicants accept their offer of admission is a function of student (rather than University) behavior and reflects the relative attractiveness of UC compared to other options an applicant has. Typically, as institutions become more selective, their acceptance rates decline because the students being admitted are, in general, better qualified and therefore more likely to have other attractive offers. For the UC system as a whole, acceptance rates have declined slightly from 55.3 percent in 1995 to 53.4 percent in 2002. This decline is consistent with the increases in selectivity that six of the eight undergraduate campuses have experienced over the past several years.

1995. Prior to 1995, underrepresented applicants admitted to at least one campus of the University were slightly more likely to accept their admission offers than non-underrepresented students (for example, in 1994, 58.1 percent of underrepresented admits enrolled, compared to 55.2 percent of the non-underrepresented admits). Applicants admitted to the Fall 1995 term would have enrolled in August or September of that year—very soon after the passage of Resolution SP-1 and the media attention to that decision. For Fall 1995, the proportion of underrepresented admits who enrolled declined from 58.1 to 55.8 percent. However, despite this decline in enrollment rates, the proportion of enrolled students from underrepresented groups remained steady in 1995 at 20.8 percent of the Universitywide total, compared to 20.7 percent in 1994.

1996-2002. In the years following the adoption of SP-1, the enrollment rate of underrepresented admitted students has fluctuated, but there is an overall decline—from 55.8 in 1995 to 50.8

percent in 2002. For the University as a whole, underrepresented students are now less likely than their non-underrepresented peers to accept their offer of admission: in 2002, 53.4 percent of total admits enrolled, compared to 50.8 percent of underrepresented students. Combined with declining numbers of applications from underrepresented minority students, these lower enrollment rates led to a decline in the proportion of UC's total enrolled freshmen who are from underrepresented groups from 20.8 percent in 1995 to 15.1 percent in 1998. At the systemwide level, increasing proportions of underrepresented applicants and admits in the years following 1998 have led to modest increases in proportional enrollment for underrepresented students. From 1998 through 2002, underrepresented students increased as a proportion of the freshman class, from 15.1 to 17.4 percent. These percentages remain well below the 20.8 percent of total freshmen that underrepresented students comprised in 1995.

Trends on the individual campuses are affected by different patterns in application growth, selectivity, and admit rates over this period, as well as by complex interactive effects. Since multiple campuses may admit the same students, changes in admit rates or selectivity on one campus often directly affect acceptance rates on others. As a result, most campuses see acceptance rates rise and fall within a few percentage points from year to year, and trends in these rates can be difficult to discern.

Campus Trends 1995-2002: Berkeley and Los Angeles. At UC Berkeley and UCLA, the proportion of total admitted students who enroll increased from 1995 to 2002, by 3.4 and 6.2 percentage points, respectively. Trends for underrepresented enrollments vary, however, between the two campuses. Perhaps because of its location in the center of California's largest metropolis and highest concentration of racial and ethnic minorities, UCLA has historically enrolled higher percentages of admitted underrepresented students than any other campus and underrepresented students have enrolled at higher rates than those who are not: in 1995, 39.1 percent of admitted underrepresented students enrolled, compared to 34.5 percent of all admits. In 2002, the enrollment rate for underrepresented students had grown by 7.7 percentage points, to 46.8 percent while the overall enrollment rate had grown from 34.5 to 40.7 percent. UCLA's success in this area (and Berkeley's distance from the large population centers of Southern California) may affect Berkeley, which admits many of the same students. At Berkeley, underrepresented admits are less likely than other students to accept their offer of admission and this gap has remained as enrollment rates for all students have increased. Thus in 1995, 38.6 percent of all admitted students enrolled, while the percentage was 35.9 percent for underrepresented students. In 2002, the enrollment rates for all students and for underrepresented students were 42.0 and 39.7 percent, respectively.

Fueled largely by drops in application and admit rates for underrepresented groups, as well as by differentially lower enrollment rates at UC Berkeley, the proportion of enrolled students at UC Berkeley and UCLA remains well below earlier levels: at UC Berkeley, 15.6 percent of the 2002 enrolled freshman class were underrepresented, as opposed to 24.3 percent in 1995; at UCLA the decline is from 30.1 percent in 1995 to 19.3 percent. Thus, from 1995 to 2002, underrepresented students have declined as a proportion of total first-time freshman enrollments by roughly 56 percent at each campus.

Campus Trends 1995-2002: Davis, Irvine, San Diego, and Santa Barbara. At UC Davis, UC Irvine, UC Santa Barbara, and UC San Diego, which are generally comparable in terms of the

percentage of admitted students who enroll, overall enrollment rates have fluctuated over the period from 1995 to 2002, but 2002 rates are within one or two percentage points of those in 1995. In 1995, enrollment rates for these four campuses ranged from 22.7 to 25.8 percent; in 2002 these rates ranged from 21.7 to 25.7 percent. Rates at which underrepresented students enroll have also fluctuated, generally in the same direction as overall trends, but a few percentage points lower. At UC Davis and UC Irvine, these rates are slightly below where they were in 1995: admitted underrepresented students enrolled at rates of 25.4 and 20.9 percent, respectively, in 1995; in 2002, these enrollment rates stand at 22.1 and 19.6 percent, respectively. At UC Santa Barbara and UC San Diego, the propensity of admitted underrepresented students to enroll increased noticeably in 1998 and 1999 (perhaps reflecting lower admit rates for these applicants at UCLA and UC Berkeley). Although these acceptance rates have fallen since then, they remain above 1995 levels at both campuses.

In terms of the proportion of the total enrolled class that underrepresented students comprise, these four campuses show generally the same trends as UC Berkeley and UCLA: high points in 1994 or 1995, declining percentages through 1998 or 1999, and increases since then. At UC Santa Barbara and UC San Diego, the proportion of underrepresented students in the enrolled freshman class is now higher than in 1995, though this statistic is a bit misleading for San Diego. UC Santa Barbara's enrolled freshman class of 2002 includes 20.5 percent underrepresented students, second in the system only to UC Riverside, which accepts all UC eligible applicants. At UC San Diego, proportional enrollment of underrepresented students (12.4 percent) also exceeds the 1995 level (11.3 percent), but 1995 appears to be anomalous: the proportional enrollment of underrepresented students at UC San Diego was 16.0 percent in 1994 and 13.6 and 13.4 percent, respectively, in 1996 and 1997. At UC Davis and UC Irvine, underrepresented students increased as a proportion of the total freshman class from 1996 through 2001, but fell again in 2002—a one-year fluctuation that may be related to increases in 2002 admissions and enrollments for underrepresented students at UC Berkeley, UCLA, UC San Diego, and UC Santa Barbara.

Campus Trends 1995-2002: Riverside and Santa Cruz. Enrollment rates at UC Riverside and UC Santa Cruz are also strongly affected by trends on other campuses, as well as by the fact that both campuses accept applicants who did not apply directly to them but are referred from other campuses that do not have capacity. These referred students are less likely to enroll and this tends to depress overall enrollment rates at Riverside and Santa Cruz—thus enrollment rates on these two campuses have fallen over the period covered in this report.

Trends in the proportion that underrepresented students represent of total freshman enrollments differ slightly at UC Riverside and UC Santa Cruz from those at other campuses. On these two campuses, proportional representation of underrepresented students in the freshman class declined from 1995 to 1997, reflecting both fewer applications from underrepresented students and steady admission rates on the selective campuses, which were still permitted to use race-conscious policies. In 1998, when admit rates for underrepresented students declined sharply at the selective campuses, underrepresented students increased as a proportion of the freshman classes at both UC Riverside and UC Santa Cruz. This trend has continued strongly at UC Riverside, which now enrolls a higher proportion of underrepresented students than it did in 1995 (31.7 as compared to 30.0 percent) and the highest proportion of all the campuses. The proportion of enrolled freshmen at Santa Cruz who are from underrepresented groups has also

grown, though more slowly; underrepresented freshmen comprise 17.3 percent of total new freshmen at Santa Cruz, compared to 22.0 in 1995, 14.7 percent in 1997, and 16.4 percent in 1998.

<b>Table 5: Number and Proportion of Underrepresented Freshman Enrollments and Underrepresented Minority Enrollment Rates* 1995, 1998 and 2002</b>									
	<b>1995</b>			<b>1998</b>			<b>2002</b>		
	Number	% of Total	Enroll Rate	Number	% of Total	Enroll Rate	Number	% of Total	Enroll Rate
Berkeley	807	24.3%	35.9%	412	11.2%	44.6%	558	15.6%	39.7%
Davis	575	17.9%	25.4%	511	14.2%	28.4%	555	12.1%	22.1%
Irvine	450	15.8%	20.9%	430	13.9%	25.0%	513	12.9%	19.6%
Los Angeles	1,108	30.1%	39.1%	597	14.3%	44.0%	806	19.3%	46.8%
Riverside	446	30.0%	24.2%	573	25.8%	27.9%	1,095	31.7%	24.0%
San Diego	335	11.3%	18.5%	346	10.5%	26.8%	524	12.4%	22.0%
Santa Barbara	581	17.5%	22.2%	656	18.5%	28.8%	783	20.5%	24.9%
Santa Cruz	391	22.0%	18.5%	378	16.4%	21.6%	548	17.3%	15.8%
UC Total	4,693	20.8%	55.8%	3,903	15.1%	52.8%	5,382	17.4%	50.8%

\* Enrollment rate = enrollments/admits.

### Trends in California High School Graduates, 1995-2001

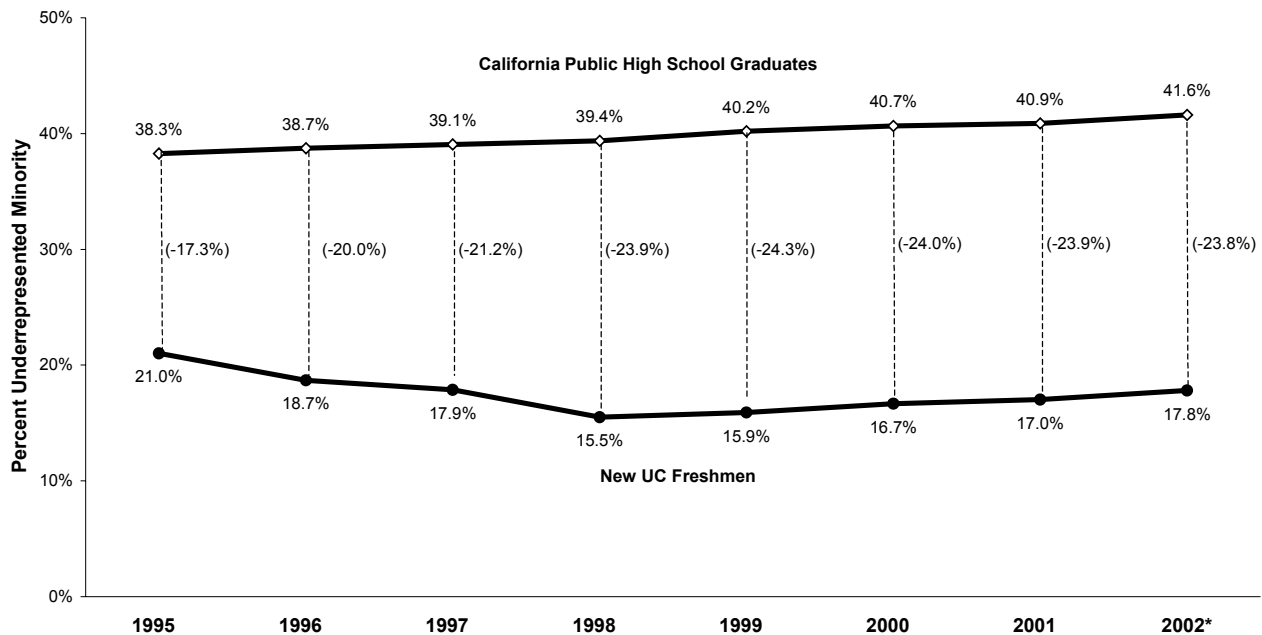
Changing patterns in the UC enrollment of students from various groups should be viewed in the larger context of California demographics. As noted in the first section of this paper, relative to their proportions among California high school graduates, underrepresented enrolled California freshmen had increased at UC through the 1980s, but this trend reversed in the early 1990s. As UC campuses became more selective, the “gap” between the proportion these students represent of California high school graduates and their proportion among UC freshmen from California widened.<sup>20</sup> As the display below indicates, this gap continued to increase from 1995 to 1999: in 1999, underrepresented students had grown to 40.2 percent of California high school graduates, but dropped to 15.9 percent of California enrolled freshmen at UC—a difference of 24.3 percentage points. In percentage terms, this “gap” increased by 38 percent from 1995 to 1999.

Over the past three years, the gap has narrowed slightly: underrepresented students are projected to comprise 41.6 percent of California’s 2002 public high school graduates while underrepresented students represent 17.8 percent of Fall 2002 enrolled California UC students—a difference of 23.8 percentage points, as compared to 17.3 points in 1995. This represents an increase of 37.6 percent since 1995 in the difference between the proportions of underrepresented students graduating from California high schools and their proportions among UC freshmen. In addition, as noted in the previous sections of this report, much of the growth in overall numbers of underrepresented students among UC enrolled freshmen has been on the rapidly growing campuses that can admit all or most UC-eligible applicants. Proportional enrollments of underrepresented students remain lower than 1994-95 levels at all but two campuses, UC Riverside and UC Santa Barbara.

<sup>20</sup> Note that the percentages of enrolled students in this section vary slightly from those elsewhere in this report because when comparing enrollments against California high school graduates, the most appropriate comparison is with California residents. Thus UC enrollment figures included in this paragraph refer to California residents only.



## Underrepresented Minorities as a Percentage of CA High School Graduates and New UC CA Resident Freshmen, 1995 to 2002



\*The projected number of graduates from California public high schools was used for calculating the percentage for 2002. The source of the projection is California Department of Finance.

*Note:* UC enrollment data are for students from private and public high schools, California residents, enrolling in the Fall term as first-time freshmen.

### B. Impacts of Specific Programs

In the UC environment, attributing specific impacts to individual programs is difficult, and in many cases impossible. This is true because the University has made a number of changes virtually simultaneously, so their effects are difficult to disentangle; because there is no way to distinguish which applicants might not have applied or been admitted in the absence of various UC initiatives; because many of these programs are quite new and trends are not yet reliably discernible; and because changes in the composition of our applicant pool are profoundly affected by rapid demographic change. Even in those case where changes can be observed, it is far more difficult to understand the reasons for those changes. Nonetheless, some trends are worth noting regarding the those of admissions and outreach initiatives described in section II that have been implemented.

#### Outreach

The University of California has reported to the California legislature and others on the impacts of its outreach programs in each of the past three years.<sup>21</sup> These reports indicate that UC outreach programs are reaching increasing numbers of students and that these students are

<sup>21</sup> Annual report is available at: <http://www.ucop.edu/outreach/statusreport2001.pdf>

achieving eligibility in greater numbers. For example, participants in UC's three largest student academic development programs (the Early Academic Outreach, Math, Engineering, Science Achievement, and Puente Programs) grew from 86,392 in 1998-99 to 111,185 in 2000-01, an overall increase of 28.7 percent. The percentage of graduating seniors who participated in these programs and achieved UC eligibility (and therefore guaranteed admission to at least one campus) improved from 20.6 percent for Fall 1999 to 24.1 percent for Fall 2001—an increase of 1,918 students over the two-year period. In addition, in 2001, the number of “partner” schools with a substantial UC presence reached 73 high schools and 183 middle and elementary schools; the School University Partnership program saw student eligibility increases from 11.7 to 13 percent from Fall 1999 to Fall 2001—an increase of 512 students over the two-year period.

The additional academic preparation and familiarity with higher education provided by UC outreach programs is a clear advantage in terms of likely readiness for and success in college, and all UC campuses acknowledge this by considering achievement in outreach programs in their selection processes. That these programs are reaching more students is indicated by the increasing numbers of these students in UC's applicant pool: over the four years (1998-2001) for which data are available, participants in UC's largest programs increased as a proportion of the applicant pool, from 8.5 percent in 1998 to 11.0 percent in 2001. These applicants are also successful in being admitted: in 2001, the overall admit rate for applicants from outreach programs was 84.8 percent as opposed to 77.7 percent. These trends are seen across the campuses, even those that admit a relatively small proportion of their applicants. At UC Berkeley, admit rates for applicants from outreach programs increased from 22.3 percent in 1998 to 31.5 percent in 2001—a four-year period during which overall admission rates fell, from 28.1 to 24.7 percent. Similar trends are apparent at UCLA, where 33.6 percent of applicants from outreach programs were admitted in 2001.

Consistent with Proposition 209, UC's outreach programs operate in a race-neutral fashion. To be eligible for these programs, applicants must be from low-income families or those with little or no previous experience with higher education, or attend a school that is educationally disadvantaged. Over the past five years, these programs have seen increasingly larger proportions of white and Asian American participants and, as described in greater detail in the reports referenced above, these students tend, on average, to achieve at higher levels than their African American, American Indian, and Latino outreach peers.

## Eligibility in the Local Context

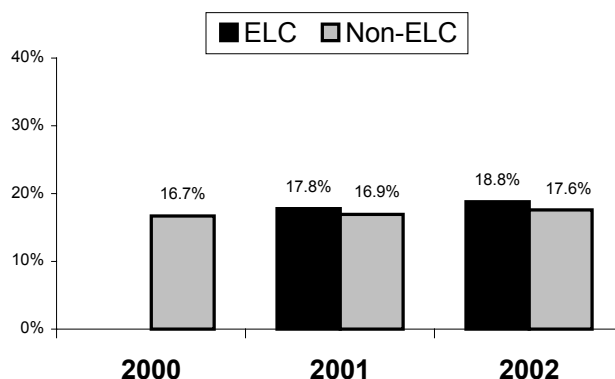
At the time the ELC program was adopted, observers assumed that it would create a new pool of students eligible *only* through evaluation in the local context—presumably these students would have completed the UC course requirements by the end of their senior year (because this was a requirement of the program) and would have GPAs in those courses that placed them in the top 4 percent of their schools but did not, when combined with their test scores, meet the requirements of the UC Eligibility Index. Thus, the group of students made eligible by the program could be identified and studied. In fact, this is not what happened. Perhaps because the top 4 percent is a highly achieving group to begin with or perhaps because of the information and motivation that being identified as ELC and included in the program provided, *virtually all of these students achieved at a level that made them UC-eligible on a statewide basis*. While this is an excellent result, it also means that the University has no way of isolating which students were made “newly” eligible and which would have become eligible anyway. This makes studying the specific impacts of the program difficult. Nonetheless, some trends can be observed:

- In the first year of the program’s implementation (the Fall 2001 cycle), not all high schools participated and the University was able to observe differences in application trends between those that did and those that did not, in order to estimate which changes in application trends might be associated with the ELC program. A simulation<sup>22</sup> analyzing application growth from schools that participated versus those that did not concluded that an estimated 2,065 additional applications were stimulated by the ELC program in its first year—about half of which were estimated to have been from underrepresented minorities. The simulation study also estimated that a disproportionate number of the newly stimulated applications were from rural schools that have traditionally sent lower numbers of applicants to the University.
- ELC status has a positive effect on the likelihood of admission to all UC campuses, including the most selective. This is not surprising because these applicants are by definition very high-achieving students and many of them would be admitted anyway, based simply on their high levels of academic preparation. But, in addition, ELC status was added to UC’s list of permissible academic admissions criteria at the time the program was adopted and admission policies on all of the selective campuses include additional consideration of ELC applicants. Applicants identified as ELC are more than twice as likely to be admitted to UC Berkeley as other applicants and this differential grew in the second year of the program, when 61 percent of ELC applicants were admitted as compared to 23.9 percent of all applicants. At UCLA, 53.6 percent of ELC applicants were admitted in 2002, compared to 24.2 percent of all applicants.

---

<sup>22</sup> “University of California: Eligibility in the Local Context Program Evaluation Report” May 2002, available at [http://www.ucop.edu/sas/elc/LettersAndQA/ELC\\_Report\\_for\\_Regents\\_May\\_2002.doc](http://www.ucop.edu/sas/elc/LettersAndQA/ELC_Report_for_Regents_May_2002.doc)

### Percent of Underrepresented Freshmen Enrollment Systemwide



- Analyses of enrollment figures for the two years since ELC has been adopted show that the proportion of underrepresented students is higher among ELC students than among non-ELC students and that this differential may be increasing. For example, for Fall 2002 underrepresented students comprise 18.8 percent of enrolled ELC students and 17.6 percent of enrolled non-ELC students. In the previous year, underrepresented students were 16.9 percent of the non-ELC population and 17.8 percent of the ELC population. This effect is seen on virtually every campus, including some of the most selective. (See Table B in the appendix.)

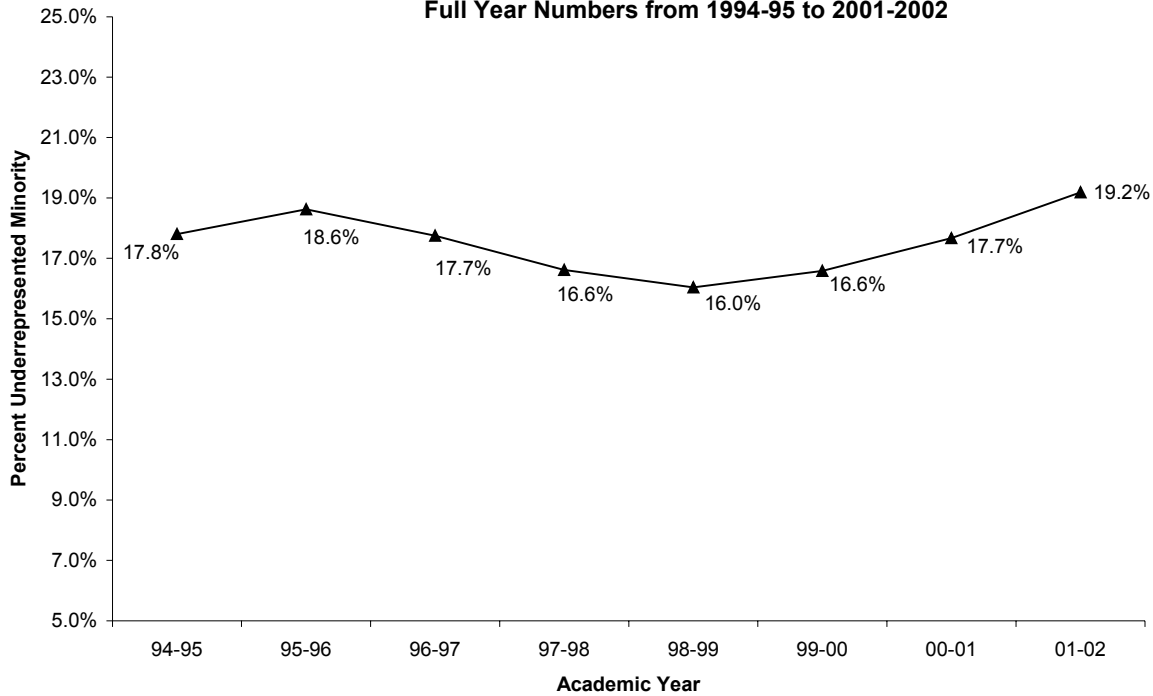
### Transfer Enrollments

At the time that UC signed its first Memorandum of Understanding with the state to increase transfer enrollments, transfers from California community colleges stood at roughly 10,200 per year and had been declining. During the 2001-02 academic year, a total of 12,305 California community college students transferred to UC—an increase of 9.7 percent over the previous year and 21 percent since 1997-98.<sup>23</sup> This rate of growth places UC on track to meet its goal of enrolling 15,300 community college transfers by 2005-06.

Community college transfer enrollments from underrepresented students have also increased during this period, both in absolute numbers and as a proportion of the total. For the 1995-96 academic year, underrepresented students comprised 18.6 percent of enrolled transfers from California community colleges. As with freshman enrollments, this proportion declined following the adoption and subsequent implementation of Resolution SP-1 and Proposition 209. Since 1998-99, however, these proportions have increased steadily. Underrepresented students now comprise 19.2 percent of California community college transfers—a greater proportion than they were in 1995-96.

<sup>23</sup> *Community College Transfers at the University of California 2002 Annual Report*, available at <http://www.ucop.edu/sas/publish/index.htm>. Note that transfer enrollments are counted on an academic-year basis—rather than Fall term only—because substantial numbers of transfer students enter UC in the Winter and Spring terms.

**Trend of Underrepresented Minority Population as a Proportion of Enrolled Transfer Students from California Community Colleges**  
**Full Year Numbers from 1994-95 to 2001-2002**



**Comprehensive Review**

The Comprehensive Review admission policy was implemented for the first time in 2002, so trend data are not available. However, the Board of Admissions and Relations with Schools completed a study of first-year outcomes<sup>24</sup> which was presented to the University’s Regents in November 2002. This study found that at the same time that it maintained or enhanced the academic preparation levels of the admitted freshman class, comprehensive review also maintained access for educationally disadvantaged applicants and coincided with increases in racial and ethnic diversity on most campuses. For example, at both UCLA and UC San Diego, indicators of educational disadvantage (low income, first-generation college, and/or attendance at a disadvantaged high school) increased noticeably among the admitted class. In terms of racial and ethnic diversity, the proportion of the admitted class from underrepresented groups increased at each of the University’s four most selective campuses (Berkeley, Los Angeles, San Diego and Santa Barbara) and the gains were noticeable at both UCLA and UC San Diego. At UCLA, the increase is also associated with an increase in applications, but the gain among underrepresented admits was greater than their gain among applicants. At San Diego, the admit rate for underrepresented applicants, which had been nearly steady for the preceding three years, increased substantially in 2001, from 29.5 to 35 percent, while the overall admit rate declined by 1.2 percentage points.

\* \* \* \* \*

<sup>24</sup> “First-Year Implementation of Comprehensive Review in Freshman Admissions: A Progress Report from the Board of Admissions and Relations with Schools,” University of California, November 2002. Available at: <http://www.ucop.edu/regents/regmeet/nov02/302attach.pdf>

The experience of the University of California over the past five years demonstrates that in a highly selective institution, implementing race-neutral policies leads to substantial declines in the proportion of entering students who are African American, American Indian, and Latino. At UC, these declines have been partially mitigated by programs designed to increase enrollments from low-income students, those with little family experience with higher education, and those who attend schools that traditionally do not send large numbers of students on to four-year institutions. In addition, increases in the numbers of underrepresented students graduating from California high schools, combined with substantial expansion of enrollment capacity at several UC campuses, have led to overall increases for some groups within the University of California as a whole. However, underrepresented students remain a substantially smaller proportion of the admitted and enrolled classes at the most UC campuses, including UC Berkeley and UCLA than they were prior to the elimination of race-conscious policies. Additionally, the gap between the percentage of underrepresented minority students graduating from California high schools and those enrolling at the University of California has widened.

## Appendix

*Table A: Profile of UC First-Time Freshman Applicants, Admits and Enrollments, 1994-2002*

- Data Definitions
- Systemwide Profile
- Berkeley Profile
- Davis Profile
- Irvine Profile
- Los Angeles Profile
- Riverside Profile
- San Diego Profile
- Santa Barbara Profile
- Santa Cruz Profile

Table B: Eligibility in the Local Context, 2000-01

- Number of Applications, Admits and Enrollments for ELC and Non-ELC California Residents by Campus and Ethnicity, 2000
- Number of Applications, Admits and Enrollments for ELC and Non-ELC California Residents by Campus and Ethnicity, 2001
- Number of Applications, Admits and Enrollments for ELC and Non-ELC California Residents by Campus and Ethnicity, 2002
- Number of ELC and Non-ELC California Resident Enrollments and Proportion of Underrepresented Minorities in ELC and Non-ELC California Resident Enrollments

## **Profiles of UC First-Time Freshman Applicants, Admits and Enrollments Information Source and Data Definitions**

### **Data Source**

Campus profiles were generated using systemwide admissions data collected by the University of California and last updated in February 2003. Through their applications to UC, students provide academic and demographic information that is subsequently reviewed and standardized. Using data from the systemwide admissions process allow us to have consistent field definitions across years and campuses.

### **Data Definitions**

Campuses profiles only consider students applying to fall semester as “first-time freshmen.” In other words, it excludes transfer students and students in early admission accelerated programs. In terms of admissions, the analyses consider students who were regularly admitted as well as those admitted by exception. The counts for Santa Cruz and Riverside include freshmen referred to these campuses after not being accommodated elsewhere. All indicators, except underrepresented minorities, were calculated as a fraction of the **overall number** of students applying and admitted at a given campus. Following a long-standing UC reporting practice the proportion of underrepresented minorities was calculated as a fraction of domestic students only.

First-generation college students have been defined as those students for whom neither parent completed a four-year degree. Family income is expressed in 1999 dollars and low-income students are those whose parents have a combined annual income less than or equal to \$30,000 in 1999 dollars. Low-performing schools are those in the 1<sup>st</sup> and 2<sup>nd</sup> quintiles of the Academic Performance Index ranking constructed by the California Department of Education. California rural students are those attending California rural high school. Counts for the Eligibility in the Local Context program include all eligible students and not only “newly” eligible students. Note that admit rates include applicants that cancelled before being admitted to UC. Thus, ELC admit rates will be less than 100 percent. Outreach participants include students who participated in EAOP, MESA, Puente or School University Partnership programs only.



# UC SYSTEMWIDE FIRST-TIME FRESHMEN

Source: SYSTEMWIDE ADMISSIONS DATA

Fall Term

## SYSTEMWIDE PROFILE

	1994	1995	1996	1997	1998	1999	2000	2001	2002
<b>Total Number</b>									
Applicants	48,331	51,336	54,102	56,401	61,171	65,490	67,845	72,715	74,871
Admits	39,141	41,334	42,928	44,295	47,031	49,374	51,449	56,522	58,648
Enrolled Students	22,161	22,875	23,899	24,705	26,096	27,262	28,363	30,304	31,302
<b>Percent</b>									
Admit Rate	81.0%	80.5%	79.3%	78.5%	76.9%	75.4%	75.8%	77.7%	78.3%
Enrollment Rate	56.6%	55.3%	55.7%	55.8%	55.5%	55.2%	55.1%	53.6%	53.4%

## APPLICANTS<sup>1</sup>

	1994	1995	1996	1997	1998	1999	2000	2001	2002
<b>Percent of Applicants</b>									
First-Generation College	30.4%	30.0%	30.3%	29.2%	28.5%	28.9%	28.9%	29.3%	29.6%
Low Family Income <sup>2</sup>	20.9%	20.3%	19.6%	18.8%	17.1%	16.7%	17.2%	16.6%	16.7%
Students from California Low-Performing Schools	na	na	na	na	15.2%	15.0%	15.4%	15.0%	16.3%
California Rural Students	5.7%	6.1%	6.2%	6.6%	6.7%	7.1%	7.0%	7.2%	7.3%
California Urban Students	36.3%	36.5%	36.1%	34.4%	33.5%	33.3%	33.2%	33.0%	34.2%
California Suburban Students	43.5%	44.0%	44.8%	43.2%	42.6%	41.5%	41.5%	41.3%	41.5%
Underrepresented Minorities <sup>3</sup>	20.6%	21.1%	19.5%	18.1%	17.5%	17.3%	17.8%	18.9%	19.7%
ELC Students <sup>4</sup>	na	na	na	na	na	na	na	12.7%	14.6%
Outreach Participants <sup>5</sup>	na	na	na	na	8.5%	8.5%	9.1%	11.0%	na

## ADMITS<sup>1</sup>

	1994	1995	1996	1997	1998	1999	2000	2001	2002
<b>Percent of Admits</b>									
First-Generation College	29.7%	29.3%	29.1%	28.6%	27.8%	28.8%	28.9%	29.2%	29.4%
Low Family Income <sup>2</sup>	21.0%	20.0%	19.4%	19.2%	17.1%	17.0%	17.5%	16.6%	16.5%
Students from California Low-Performing Schools	na	na	na	na	15.5%	15.6%	16.3%	15.5%	16.6%
California Rural Students	5.9%	6.5%	6.7%	7.2%	7.4%	7.9%	7.8%	8.0%	8.0%
California Urban Students	45.7%	46.2%	46.9%	45.4%	45.7%	44.9%	45.7%	45.9%	45.9%
California Suburban Students	37.2%	37.2%	36.9%	35.9%	35.1%	35.8%	35.7%	35.8%	36.8%
Underrepresented Minorities <sup>3</sup>	20.3%	20.7%	18.7%	17.9%	15.9%	16.1%	16.7%	17.8%	18.3%
ELC Students <sup>4</sup>	na	na	na	na	na	na	na	16.1%	18.4%
Outreach Participants <sup>5</sup>	na	na	na	na	9.0%	9.2%	9.9%	12.0%	na

## ENROLLMENTS<sup>1</sup>

	1994	1995	1996	1997	1998	1999	2000	2001	2002
<b>Percent of enrollments</b>									
First-Generation College	32.2%	31.4%	30.6%	29.8%	28.9%	30.7%	30.5%	31.0%	31.5%
Low Family Income <sup>2</sup>	23.8%	22.6%	21.0%	20.5%	18.7%	18.9%	19.6%	18.9%	18.9%
Students from California Low-Performing Schools	na	na	na	na	16.6%	17.3%	18.0%	17.0%	18.7%
California Rural Students	5.7%	6.1%	6.6%	7.2%	7.5%	7.9%	7.8%	8.0%	8.0%
California Urban Students	39.3%	39.3%	38.6%	38.0%	37.3%	37.8%	37.5%	37.7%	38.4%
California Suburban Students	47.7%	48.4%	49.3%	47.8%	47.9%	47.4%	48.4%	48.2%	48.1%
Underrepresented Minorities <sup>3</sup>	20.7%	20.8%	18.4%	17.5%	15.1%	15.4%	16.2%	16.7%	17.4%
ELC Students <sup>4</sup>	na	na	na	na	na	na	na	18.2%	20.9%
Outreach Participants <sup>5</sup>	na	na	na	na	9.5%	10.3%	11.0%	13.4%	na

1 For internal consistency, percentages have been calculated as a fraction of all students, international and domestic. This will result in minor differences with other UC publications that report on domestic or CA resident students only. Note that URMs only are calculated as a percentage of domestic students.

2 Family Income is expressed in 1999 dollars. Low family income is defined as less than or equal to \$30,000 in 1999 dollars.

3 American Indian, African American, Chicano, or Latino. Following longstanding UC reporting practices, this indicator has been calculated as a fraction of domestic students only.

4 Counts for Eligibility in the Local Context Program include all ELC students, not only newly eligible students. Note that admit rates include applicants that cancelled before being admitted. Thus, ELC admit rates will be less than 100%. ELC 2001 counts do not include Special Process.

5 Outreach participants include students who participated in EAOP, MESA, Puente or School University Partnership programs only. The sum of campus counts exceeds systemwide counts since students can apply to more than one campus. Information for 2002 is not yet available.

**ADMIT RATES**

	1994	1995	1996	1997	1998	1999	2000	2001	2002
<b>Percent of applicants admitted</b>									
First-Generation College	79.3%	78.7%	76.4%	77.0%	75.2%	75.0%	75.8%	77.3%	77.9%
Low Family Income <sup>2</sup>	81.3%	79.3%	78.4%	79.9%	76.7%	76.6%	77.3%	77.6%	77.2%
Students from California Low-Performing Schools	na	na	na	na	78.6%	78.7%	80.4%	79.9%	79.8%
California Rural Students	84.6%	85.8%	86.0%	85.4%	84.0%	83.8%	84.0%	86.4%	86.6%
California Urban Students	83.0%	82.0%	81.0%	81.9%	80.5%	80.9%	81.6%	84.4%	84.3%
California Suburban Students	84.9%	84.4%	83.1%	82.5%	82.5%	81.7%	83.6%	86.3%	86.7%
Underrepresented Minorities <sup>3</sup>	80.7%	80.2%	77.1%	79.1%	71.2%	71.0%	72.3%	74.7%	74.3%
ELC Students <sup>4</sup>	na	na	na	na	na	na	na	98.3%	98.5%
Outreach Participants <sup>5</sup>	na	na	na	na	81.6%	81.6%	83.0%	84.8%	na
All Students	<b>81.0%</b>	<b>80.5%</b>	<b>79.3%</b>	<b>78.5%</b>	<b>76.9%</b>	<b>75.4%</b>	<b>75.8%</b>	<b>77.7%</b>	<b>78.3%</b>

**ENROLLMENT RATES**

	1994	1995	1996	1997	1998	1999	2000	2001	2002
<b>Percent of admits who enrolled</b>									
First-Generation College	61.4%	59.2%	58.4%	58.0%	57.6%	59.0%	58.1%	56.9%	57.2%
Low Family Income <sup>2</sup>	64.3%	62.5%	60.3%	59.8%	60.6%	61.4%	61.7%	61.1%	61.2%
Students from California Low-Performing Schools	na	na	na	na	59.4%	61.2%	60.8%	58.8%	60.1%
California Rural Students	54.3%	52.6%	54.3%	55.8%	56.8%	54.8%	55.0%	53.8%	53.0%
California Urban Students	59.8%	58.5%	58.2%	59.1%	59.0%	58.3%	57.9%	56.4%	55.8%
California Suburban Students	59.2%	58.0%	58.6%	58.8%	58.2%	58.2%	58.3%	56.3%	55.9%
Underrepresented Minorities <sup>3</sup>	58.1%	55.8%	55.1%	54.8%	52.8%	53.3%	53.7%	50.6%	50.8%
ELC Students <sup>4</sup>	na	na	na	na	na	na	na	60.7%	60.6%
Outreach Participants <sup>5</sup>	na	na	na	na	58.1%	61.6%	61.0%	60.1%	na
All Students	<b>56.6%</b>	<b>55.3%</b>	<b>55.7%</b>	<b>55.8%</b>	<b>55.5%</b>	<b>55.2%</b>	<b>55.1%</b>	<b>53.6%</b>	<b>53.4%</b>

1 For internal consistency, percentages have been calculated as a fraction of all students, international and domestic. This will result in minor differences with other UC publications that report on domestic or CA resident students only. Note that URMs only are calculated as a percentage of domestic students.

2 Family Income is expressed in 1999 dollars. Low family income is defined as less than or equal to \$30,000 in 1999 dollars.

3 American Indian, African American, Chicano, or Latino. Following longstanding UC reporting practices, this indicator has been calculated as a fraction of domestic students only.

4 Counts for Eligibility in the Local Context Program include all ELC students, not only newly eligible students. Note that admit rates include applicants that cancelled before being admitted. Thus, ELC admit rates will be less than 100%. ELC 2001 counts do not include Special Process.

5 Outreach participants include students who participated in EAOP, MESA, Puente or School University Partnership programs only. The sum of campus counts exceeds systemwide counts since students can apply to more than one campus. Information for 2002 is not yet available.

**UC BERKELEY FIRST-TIME FRESHMEN**  
**Source: SYSTEMWIDE ADMISSIONS DATA**  
**Fall Term**

**CAMPUS PROFILE**

	1994	1995	1996	1997	1998	1999	2000	2001	2002
<b>Total Number</b>									
Applicants	20,819	22,811	25,107	27,154	30,027	31,106	33,232	36,106	36,445
Admits	8,417	8,830	9,017	8,449	8,439	8,441	8,787	8,910	8,707
Enrolled Students	3,344	3,404	3,708	3,572	3,735	3,618	3,735	3,841	3,653
<b>Percent</b>									
Admit Rate	40.4%	38.7%	35.9%	31.1%	28.1%	27.1%	26.4%	24.7%	23.9%
Enrollment Rate	39.7%	38.6%	41.1%	42.3%	44.3%	42.9%	42.5%	43.1%	42.0%

**APPLICANTS<sup>1</sup>**

	1994	1995	1996	1997	1998	1999	2000	2001	2002
<b>Percent of Applicants</b>									
First-Generation College	25.6%	25.1%	26.0%	25.3%	24.5%	23.7%	25.3%	24.9%	25.7%
Low Family Income <sup>2</sup>	19.4%	19.4%	18.9%	18.0%	16.3%	15.0%	16.9%	16.0%	16.6%
Students from California Low-Performing Schools	na	na	na	na	12.4%	11.5%	13.1%	12.8%	14.4%
California Rural Students	3.9%	4.2%	4.3%	4.5%	4.8%	4.6%	4.7%	5.1%	5.1%
California Urban Students	36.0%	36.6%	35.5%	34.2%	32.8%	32.4%	32.8%	32.8%	34.4%
California Suburban Students	41.9%	42.2%	44.0%	41.5%	41.2%	40.3%	40.1%	39.3%	40.0%
Underrepresented Minorities <sup>3</sup>	18.2%	18.9%	17.4%	16.3%	16.0%	13.9%	15.6%	16.6%	17.4%
ELC Students <sup>4</sup>	na	na	na	na	na	na	na	16.3%	18.5%
Outreach Participants <sup>5</sup>	na	na	na	na	7.6%	6.8%	8.4%	9.9%	na

**ADMITS<sup>1</sup>**

	1994	1995	1996	1997	1998	1999	2000	2001	2002
<b>Percent of Admits</b>									
First-Generation College	23.5%	23.4%	22.8%	21.4%	18.1%	21.3%	22.6%	23.1%	23.8%
Low Family Income <sup>2</sup>	18.5%	17.7%	17.4%	16.5%	13.9%	15.6%	16.3%	17.2%	16.7%
Students from California Low-Performing Schools	na	na	na	na	9.4%	12.2%	13.7%	15.8%	17.2%
California Rural Students	4.8%	5.4%	5.1%	5.0%	4.8%	5.4%	5.2%	6.3%	6.2%
California Urban Students	42.9%	43.4%	45.6%	43.5%	44.1%	42.3%	44.7%	43.6%	43.5%
California Suburban Students	35.3%	35.6%	35.2%	35.4%	33.4%	35.6%	35.2%	37.0%	37.1%
Underrepresented Minorities <sup>3</sup>	24.5%	26.1%	23.6%	23.1%	11.2%	13.5%	15.3%	16.3%	16.5%
ELC Students <sup>4</sup>	na	na	na	na	na	na	na	38.8%	47.2%
Outreach Participants <sup>5</sup>	na	na	na	na	6.0%	7.6%	10.1%	12.7%	na

**ENROLLMENTS<sup>1</sup>**

	1994	1995	1996	1997	1998	1999	2000	2001	2002
<b>Percent of enrollments</b>									
First-Generation College	24.3%	26.1%	25.2%	23.1%	21.0%	24.9%	25.1%	25.1%	25.8%
Low Family Income <sup>2</sup>	19.5%	19.4%	19.8%	18.5%	16.1%	17.9%	18.4%	19.8%	18.5%
Students from California Low-Performing Schools	na	na	Na	na	10.6%	14.3%	14.7%	17.3%	18.6%
California Rural Students	4.0%	4.9%	4.8%	4.5%	4.6%	5.5%	5.1%	6.2%	6.0%
California Urban Students	37.6%	38.3%	37.6%	38.7%	36.6%	37.6%	38.8%	40.7%	38.7%
California Suburban Students	44.0%	43.8%	47.3%	44.5%	45.5%	44.1%	45.1%	43.5%	45.1%
Underrepresented Minorities <sup>3</sup>	22.4%	24.3%	22.6%	21.5%	11.2%	13.6%	13.5%	14.6%	15.6%
ELC Students <sup>4</sup>	na	na	Na	na	na	na	na	35.7%	42.7%
Outreach Participants <sup>5</sup>	na	na	Na	na	6.4%	8.8%	11.1%	13.4%	na

1 For internal consistency, percentages have been calculated as a fraction of all students, international and domestic. This will result in minor differences with other UC publications that report on domestic or CA resident students only. Note that URMs only are calculated as a percentage of domestic students.

2 Family Income is expressed in 1999 dollars. Low family income is defined as less than or equal to \$30,000 in 1999 dollars.

3 American Indian, African American, Chicano, or Latino. Following longstanding UC reporting practices, this indicator has been calculated as a fraction of domestic students only.

4 Counts for Eligibility in the Local Context Program include all ELC students, not only newly eligible students. Note that admit rates include applicants that cancelled before being admitted. Thus, ELC admit rates will be less than 100%. ELC 2001 counts do not include Special Process.

5 Outreach participants include students who participated in EAOP, MESA, Puente or School University Partnership programs only. The sum of campus counts exceeds systemwide counts since students can apply to more than one campus. Information for 2002 is not yet available.

**ADMIT RATES**

	1994	1995	1996	1997	1998	1999	2000	2001	2002
<b>Percent of applicants admitted</b>									
First-Generation College	37.0%	36.1%	31.5%	26.3%	20.7%	24.4%	23.7%	23.0%	22.1%
Low Family Income <sup>2</sup>	38.6%	35.4%	33.2%	28.6%	23.9%	28.2%	25.5%	26.5%	24.0%
Students from California Low-Performing Schools	na	na	na	na	21.3%	28.9%	27.7%	30.4%	28.5%
California Rural Students	49.4%	49.5%	42.8%	34.5%	28.5%	32.3%	28.9%	30.9%	29.3%
California Urban Students	39.6%	37.6%	35.6%	32.2%	28.6%	29.8%	28.4%	27.9%	25.8%
California Suburban Students	41.4%	39.8%	37.3%	32.6%	30.1%	28.5%	29.5%	27.4%	26.0%
Underrepresented Minorities <sup>3</sup>	55.5%	54.6%	49.4%	45.4%	20.2%	26.9%	26.6%	25.2%	23.3%
ELC Students <sup>4</sup>	na	na	na	na	na	na	na	58.8%	61.0%
Outreach Participants <sup>5</sup>	na	na	na	na	22.3%	30.3%	31.9%	31.5%	na
All Students	<b>40.4%</b>	<b>38.7%</b>	<b>35.9%</b>	<b>31.1%</b>	<b>28.1%</b>	<b>27.1%</b>	<b>26.4%</b>	<b>24.7%</b>	<b>23.9%</b>

**ENROLLMENT RATES**

	1994	1995	1996	1997	1998	1999	2000	2001	2002
<b>Percent of admits who enrolled</b>									
First-Generation College	41.1%	43.1%	45.5%	45.5%	51.3%	49.9%	47.3%	46.8%	45.6%
Low Family Income <sup>2</sup>	41.8%	42.2%	46.8%	47.2%	51.3%	49.3%	47.8%	49.6%	46.3%
Students from California Low-Performing Schools	na	na	Na	na	50.3%	50.3%	45.5%	47.2%	45.5%
California Rural Students	33.4%	35.0%	38.7%	37.6%	42.3%	43.5%	41.5%	42.5%	40.1%
California Urban Students	42.4%	41.5%	44.0%	46.3%	48.5%	45.3%	46.8%	47.4%	43.8%
California Suburban Students	40.8%	38.9%	42.6%	43.2%	45.7%	44.7%	42.9%	43.1%	43.5%
Underrepresented Minorities <sup>3</sup>	36.4%	35.9%	39.5%	39.8%	44.6%	43.1%	37.8%	38.9%	39.7%
ELC Students <sup>4</sup>	na	na	Na	na	na	na	na	39.8%	37.9%
Outreach Participants <sup>5</sup>	na	na	Na	na	47.0%	49.4%	46.8%	45.5%	na
All Students	<b>39.7%</b>	<b>38.6%</b>	<b>41.1%</b>	<b>42.3%</b>	<b>44.3%</b>	<b>42.9%</b>	<b>42.5%</b>	<b>43.1%</b>	<b>42.0%</b>

1 For internal consistency, percentages have been calculated as a fraction of all students, international and domestic. This will result in minor differences with other UC publications that report on domestic or CA resident students only. Note that URM's only are calculated as a percentage of domestic students.

2 Family Income is expressed in 1999 dollars. Low family income is defined as less than or equal to \$30,000 in 1999 dollars.

3 American Indian, African American, Chicano, or Latino. Following longstanding UC reporting practices, this indicator has been calculated as a fraction of domestic students only.

4 Counts for Eligibility in the Local Context Program include all ELC students, not only newly eligible students. Note that admit rates include applicants that cancelled before being admitted. Thus, ELC admit rates will be less than 100%. ELC 2001 counts do not include Special Process.

5 Outreach participants include students who participated in EAOP, MESA, Puente or School University Partnership programs only. The sum of campus counts exceeds systemwide counts since students can apply to more than one campus. Information for 2002 is not yet available.

**UC DAVIS FIRST-TIME FRESHMEN**  
**Source: SYSTEMWIDE ADMISSIONS DATA**  
**Fall Term**

**CAMPUS PROFILE**

	1994	1995	1996	1997	1998	1999	2000	2001	2002
<b>Total Number</b>									
Applicants	16,816	17,696	18,569	19,546	20,736	22,744	25,241	27,916	28,732
Admits	11,845	12,575	13,636	13,607	13,713	14,344	15,942	17,527	18,057
Enrolled Students	3,198	3,240	3,679	3,523	3,611	3,799	4,312	4,371	4,632
<b>Percent</b>									
Admit Rate	70.4%	71.1%	73.4%	69.6%	66.1%	63.1%	63.2%	62.8%	62.8%
Enrollment Rate	27.0%	25.8%	27.0%	25.9%	26.3%	26.5%	27.0%	24.9%	25.7%

**APPLICANTS<sup>1</sup>**

	1994	1995	1996	1997	1998	1999	2000	2001	2002
<b>Percent of Applicants</b>									
First-Generation College	28.0%	27.7%	28.9%	28.3%	27.5%	28.3%	29.0%	29.3%	28.9%
Low Family Income <sup>2</sup>	18.9%	18.5%	18.1%	17.7%	15.7%	15.7%	16.7%	15.9%	15.8%
Students from California Low-Performing Schools	na	na	na	na	13.5%	13.3%	14.5%	14.0%	14.2%
California Rural Students	7.4%	7.8%	8.1%	8.9%	9.0%	9.2%	8.6%	8.8%	8.9%
California Urban Students	38.8%	39.3%	38.9%	37.4%	36.9%	37.5%	37.8%	37.5%	38.1%
California Suburban Students	46.4%	46.4%	47.1%	46.2%	46.2%	45.5%	45.8%	45.8%	45.9%
Underrepresented Minorities <sup>3</sup>	15.5%	16.1%	15.1%	13.9%	14.0%	13.4%	14.7%	15.6%	15.4%
ELC Students <sup>4</sup>	na	na	na	na	na	na	na	12.7%	14.4%
Outreach Participants <sup>5</sup>	na	na	na	na	8.1%	8.4%	9.9%	10.9%	na

**ADMITS<sup>1</sup>**

	1994	1995	1996	1997	1998	1999	2000	2001	2002
<b>Percent of Admits</b>									
First-Generation College	27.1%	26.8%	27.1%	27.3%	27.9%	28.0%	27.9%	29.0%	28.1%
Low Family Income <sup>2</sup>	18.8%	18.2%	17.0%	17.3%	16.8%	16.4%	17.3%	17.0%	16.7%
Students from California Low-Performing Schools	na	na	na	na	14.4%	13.6%	14.8%	14.6%	15.1%
California Rural Students	7.8%	8.4%	8.7%	9.7%	9.8%	10.0%	9.1%	9.4%	9.4%
California Urban Students	47.3%	47.2%	47.9%	46.1%	46.4%	46.1%	46.3%	45.9%	46.3%
California Suburban Students	38.2%	38.7%	38.3%	37.3%	37.1%	37.1%	37.9%	38.0%	38.4%
Underrepresented Minorities <sup>3</sup>	17.8%	18.3%	16.2%	16.6%	13.2%	12.5%	13.1%	14.6%	14.0%
ELC Students <sup>4</sup>	na	na	na	na	na	na	na	19.2%	22.1%
Outreach Participants <sup>5</sup>	na	na	na	na	9.2%	9.0%	10.6%	12.3%	na

**ENROLLMENTS<sup>1</sup>**

	1994	1995	1996	1997	1998	1999	2000	2001	2002
<b>Percent of enrollments</b>									
First-Generation College	35.8%	34.5%	33.3%	32.6%	35.1%	34.2%	32.5%	36.0%	32.9%
Low Family Income <sup>2</sup>	23.5%	23.1%	19.2%	19.5%	20.0%	19.0%	19.7%	19.5%	18.0%
Students from California Low-Performing Schools	na	na	na	na	17.4%	17.1%	16.2%	15.6%	17.0%
California Rural Students	10.3%	10.3%	10.0%	11.6%	12.6%	12.0%	11.3%	11.6%	11.0%
California Urban Students	40.7%	42.4%	40.0%	38.9%	40.5%	39.6%	38.5%	39.1%	40.4%
California Suburban Students	44.8%	43.8%	46.8%	45.0%	43.2%	44.1%	45.8%	44.6%	44.6%
Underrepresented Minorities <sup>3</sup>	18.3%	17.9%	13.6%	14.2%	14.2%	12.6%	13.3%	14.3%	12.1%
ELC Students <sup>4</sup>	na	na	na	na	na	na	na	13.1%	15.1%
Outreach Participants <sup>5</sup>	na	na	na	na	11.5%	11.5%	12.0%	13.7%	na

1 For internal consistency, percentages have been calculated as a fraction of all students, international and domestic. This will result in minor differences with other UC publications that report on domestic or CA resident students only. Note that URM's only are calculated as a percentage of domestic students.

2 Family Income is expressed in 1999 dollars. Low family income is defined as less than or equal to \$30,000 in 1999 dollars.

3 American Indian, African American, Chicano, or Latino. Following longstanding UC reporting practices, this indicator has been calculated as a fraction of domestic students only.

4 Counts for Eligibility in the Local Context Program include all ELC students, not only newly eligible students. Note that admit rates include applicants that cancelled before being admitted. Thus, ELC admit rates will be less than 100%. ELC 2001 counts do not include Special Process.

5 Outreach participants include students who participated in EAOP, MESA, Puente or School University Partnership programs only. The sum of campus counts exceeds systemwide counts since students can apply to more than one campus. Information for 2002 is not yet available.

**ADMIT RATES**

	1994	1995	1996	1997	1998	1999	2000	2001	2002
<b>Percent of applicants admitted</b>									
First-Generation College	68.3%	68.6%	68.9%	67.1%	67.0%	62.4%	60.7%	62.2%	61.1%
Low Family Income <sup>2</sup>	70.4%	70.0%	68.8%	68.2%	70.6%	65.7%	65.1%	67.1%	66.6%
Students from California Low-Performing Schools	na	na	na	na	70.1%	64.3%	64.5%	65.4%	66.7%
California Rural Students	73.7%	76.7%	79.0%	76.1%	72.0%	68.1%	66.3%	67.5%	67.0%
California Urban Students	69.5%	70.0%	72.3%	69.4%	66.5%	62.4%	63.5%	63.7%	63.3%
California Suburban Students	71.8%	72.3%	74.7%	69.4%	66.4%	63.8%	63.8%	62.9%	63.4%
Underrepresented Minorities <sup>3</sup>	81.4%	81.3%	79.7%	83.9%	62.9%	59.5%	56.6%	59.7%	57.6%
ELC Students <sup>4</sup>	na	na	na	na	na	na	na	95.1%	96.6%
Outreach Participants <sup>5</sup>	na	na	na	na	75.0%	67.4%	68.0%	71.2%	na
All Students	<b>70.4%</b>	<b>71.1%</b>	<b>73.4%</b>	<b>69.6%</b>	<b>66.1%</b>	<b>63.1%</b>	<b>63.2%</b>	<b>62.8%</b>	<b>62.8%</b>

**ENROLLMENT RATES**

	1994	1995	1996	1997	1998	1999	2000	2001	2002
<b>Percent of admits who enrolled</b>									
First-Generation College	35.7%	33.2%	33.1%	30.9%	33.2%	32.3%	31.5%	31.0%	30.0%
Low Family Income <sup>2</sup>	33.7%	32.7%	30.6%	29.1%	31.4%	30.6%	30.8%	28.7%	27.6%
Students from California Low-Performing Schools	na	na	na	na	32.0%	33.3%	29.6%	26.7%	28.9%
California Rural Students	35.8%	31.6%	31.2%	30.9%	33.9%	31.8%	33.8%	30.5%	29.9%
California Urban Students	28.7%	28.2%	28.2%	27.0%	28.7%	28.3%	27.4%	25.7%	27.0%
California Suburban Students	25.6%	23.9%	26.4%	25.3%	24.5%	25.3%	26.7%	24.3%	24.7%
Underrepresented Minorities <sup>3</sup>	27.7%	25.4%	22.7%	22.3%	28.4%	26.7%	27.5%	24.5%	22.1%
ELC Students <sup>4</sup>	na	na	na	na	na	na	na	17.0%	17.5%
Outreach Participants <sup>5</sup>	na	na	na	na	32.8%	33.9%	30.6%	27.6%	na
All Students	<b>27.0%</b>	<b>25.8%</b>	<b>27.0%</b>	<b>25.9%</b>	<b>26.3%</b>	<b>26.5%</b>	<b>27.0%</b>	<b>24.9%</b>	<b>25.7%</b>

1 For internal consistency, percentages have been calculated as a fraction of all students, international and domestic. This will result in minor differences with other UC publications that report on domestic or CA resident students only. Note that URM's only are calculated as a percentage of domestic students.

2 Family Income is expressed in 1999 dollars. Low family income is defined as less than or equal to \$30,000 in 1999 dollars.

3 American Indian, African American, Chicano, or Latino. Following longstanding UC reporting practices, this indicator has been calculated as a fraction of domestic students only.

4 Counts for Eligibility in the Local Context Program include all ELC students, not only newly eligible students. Note that admit rates include applicants that cancelled before being admitted. Thus, ELC admit rates will be less than 100%. ELC 2001 counts do not include Special Process.

5 Outreach participants include students who participated in EAOP, MESA, Puente or School University Partnership programs only. The sum of campus counts exceeds systemwide counts since students can apply to more than one campus. Information for 2002 is not yet available.

**UC IRVINE FIRST-TIME FRESHMEN**  
**Source: SYSTEMWIDE ADMISSIONS DATA**  
**Fall Term**

**CAMPUS PROFILE**

	1994	1995	1996	1997	1998	1999	2000	2001	2002
<b>Total Number</b>									
Applicants	15,658	15,850	16,583	17,203	19,619	22,123	24,686	29,165	30,596
Admits	11,456	11,576	11,816	11,306	12,229	13,310	14,087	17,219	17,325
Enrolled Students	2,718	2,907	3,172	2,727	3,109	3,709	3,652	4,024	4,001
<b>Percent</b>									
Admit Rate	73.2%	73.0%	71.3%	65.7%	62.3%	60.2%	57.1%	59.0%	56.6%
Enrollment Rate	23.7%	25.1%	26.8%	24.1%	25.4%	27.9%	25.9%	23.4%	23.1%

**APPLICANTS<sup>1</sup>**

	1994	1995	1996	1997	1998	1999	2000	2001	2002
<b>Percent of Applicants</b>									
First-Generation College	35.0%	34.4%	34.4%	33.7%	33.1%	33.8%	34.0%	34.5%	34.1%
Low Family Income <sup>2</sup>	26.8%	26.3%	25.1%	24.8%	22.7%	22.2%	23.5%	21.7%	21.6%
Students from California Low-Performing Schools	na	na	na	na	19.6%	19.4%	20.5%	19.5%	20.5%
California Rural Students	3.2%	3.5%	3.4%	4.1%	4.5%	4.7%	4.7%	5.4%	5.5%
California Urban Students	38.3%	40.0%	40.0%	39.6%	39.2%	38.9%	39.5%	38.6%	40.1%
California Suburban Students	49.8%	50.5%	51.7%	49.7%	49.6%	49.0%	48.3%	48.7%	48.0%
Underrepresented Minorities <sup>3</sup>	18.7%	20.2%	17.3%	16.6%	15.9%	16.5%	17.4%	18.8%	19.7%
ELC Students <sup>4</sup>	na	na	na	na	na	na	na	14.6%	15.3%
Outreach Participants <sup>5</sup>	na	na	na	na	9.2%	9.8%	10.5%	13.5%	na

**ADMITS<sup>1</sup>**

	1994	1995	1996	1997	1998	1999	2000	2001	2002
<b>Percent of Admits</b>									
First-Generation College	33.5%	32.2%	32.1%	32.0%	30.6%	30.2%	29.1%	29.7%	29.3%
Low Family Income <sup>2</sup>	25.1%	24.3%	23.7%	23.7%	20.8%	19.4%	19.7%	18.4%	17.8%
Students from California Low-Performing Schools	na	na	na	na	18.6%	17.2%	17.2%	17.1%	17.6%
California Rural Students	3.2%	3.6%	3.6%	4.4%	5.1%	5.2%	5.0%	5.9%	5.9%
California Urban Students	52.1%	52.2%	53.2%	50.7%	51.1%	50.8%	51.0%	50.5%	50.0%
California Suburban Students	37.5%	39.3%	39.3%	39.4%	38.7%	37.9%	37.1%	37.4%	38.7%
Underrepresented Minorities <sup>3</sup>	18.6%	18.9%	14.4%	16.0%	14.2%	14.4%	13.9%	15.6%	15.3%
ELC Students <sup>4</sup>	na	na	na	na	na	na	na	24.3%	26.8%
Outreach Participants <sup>5</sup>	na	na	na	na	9.2%	8.8%	9.1%	12.9%	na

**ENROLLMENTS<sup>1</sup>**

	1994	1995	1996	1997	1998	1999	2000	2001	2002
<b>Percent of enrollments</b>									
First-Generation College	39.5%	37.3%	36.0%	36.9%	34.9%	32.5%	30.9%	32.1%	28.9%
Low Family Income <sup>2</sup>	26.7%	28.5%	27.1%	28.7%	22.5%	19.8%	19.6%	19.1%	15.9%
Students from California Low-Performing Schools	na	na	na	na	20.8%	19.5%	18.8%	17.6%	15.2%
California Rural Students	2.9%	2.8%	3.2%	3.6%	4.0%	4.4%	3.9%	4.8%	4.1%
California Urban Students	39.4%	40.4%	40.3%	38.7%	38.7%	38.4%	37.0%	36.4%	38.0%
California Suburban Students	55.3%	53.7%	54.0%	54.3%	53.5%	52.8%	54.0%	53.2%	53.3%
Underrepresented Minorities <sup>3</sup>	17.3%	15.8%	11.9%	12.4%	13.9%	13.8%	13.4%	15.9%	12.9%
ELC Students <sup>4</sup>	na	na	na	na	na	na	na	14.2%	15.5%
Outreach Participants <sup>5</sup>	na	na	na	na	9.0%	8.7%	8.3%	12.0%	na

1 For internal consistency, percentages have been calculated as a fraction of all students, international and domestic. This will result in minor differences with other UC publications that report on domestic or CA resident students only. Note that URMs only are calculated as a percentage of domestic students.

2 Family Income is expressed in 1999 dollars. Low family income is defined as less than or equal to \$30,000 in 1999 dollars.

3 American Indian, African American, Chicano, or Latino. Following longstanding UC reporting practices, this indicator has been calculated as a fraction of domestic students only.

4 Counts for Eligibility in the Local Context Program include all ELC students, not only newly eligible students. Note that admit rates include applicants that cancelled before being admitted. Thus, ELC admit rates will be less than 100%. ELC 2001 counts do not include Special Process.

5 Outreach participants include students who participated in EAOP, MESA, Puente or School University Partnership programs only. The sum of campus counts exceeds systemwide counts since students can apply to more than one campus. Information for 2002 is not yet available.

**ADMIT RATES**

	1994	1995	1996	1997	1998	1999	2000	2001	2002
<b>Percent of applicants admitted</b>									
First-Generation College	70.0%	68.2%	66.4%	62.4%	57.7%	53.7%	48.8%	50.8%	48.6%
Low Family Income <sup>2</sup>	68.5%	67.4%	67.4%	62.7%	57.1%	52.6%	47.9%	50.0%	46.6%
Students from California Low-Performing Schools	na	na	na	na	59.0%	53.3%	48.0%	51.9%	48.6%
California Rural Students	73.7%	74.8%	74.0%	71.0%	70.5%	65.6%	60.3%	63.7%	61.7%
California Urban Students	71.7%	71.8%	70.1%	65.4%	61.6%	58.6%	53.6%	57.1%	54.6%
California Suburban Students	76.5%	75.5%	73.4%	67.0%	64.2%	62.4%	60.3%	61.3%	59.0%
Underrepresented Minorities <sup>3</sup>	73.2%	69.0%	59.8%	64.1%	55.8%	53.0%	45.9%	49.5%	44.3%
ELC Students <sup>4</sup>	na	na	na	na	na	na	na	98.4%	99.1%
Outreach Participants <sup>5</sup>	na	na	na	na	62.4%	54.2%	49.7%	56.4%	na
All Students	<b>73.2%</b>	<b>73.0%</b>	<b>71.3%</b>	<b>65.7%</b>	<b>62.3%</b>	<b>60.2%</b>	<b>57.1%</b>	<b>59.0%</b>	<b>56.6%</b>

**ENROLLMENT RATES**

	1994	1995	1996	1997	1998	1999	2000	2001	2002
<b>Percent of admits who enrolled</b>									
First-Generation College	28.0%	29.1%	30.2%	27.9%	29.0%	30.0%	27.5%	25.2%	22.8%
Low Family Income <sup>2</sup>	25.3%	29.4%	30.7%	29.3%	27.5%	28.4%	25.7%	24.2%	20.6%
Students from California Low-Performing Schools	na	na	na	na	28.4%	31.7%	28.3%	24.0%	20.0%
California Rural Students	21.1%	19.5%	24.2%	19.4%	20.2%	23.5%	20.2%	19.2%	15.9%
California Urban Students	24.9%	25.8%	27.5%	23.7%	25.4%	28.2%	25.8%	22.8%	22.7%
California Suburban Students	25.2%	25.9%	27.2%	25.8%	26.6%	29.0%	27.4%	24.6%	24.6%
Underrepresented Minorities <sup>3</sup>	22.1%	20.9%	22.2%	18.7%	25.0%	26.9%	25.2%	23.9%	19.6%
ELC Students <sup>4</sup>	na	na	na	na	na	na	na	13.6%	13.4%
Outreach Participants <sup>5</sup>	na	na	na	na	25.0%	27.5%	23.4%	21.8%	na
All Students	<b>23.7%</b>	<b>25.1%</b>	<b>26.8%</b>	<b>24.1%</b>	<b>25.4%</b>	<b>27.9%</b>	<b>25.9%</b>	<b>23.4%</b>	<b>23.1%</b>

1 For internal consistency, percentages have been calculated as a fraction of all students, international and domestic. This will result in minor differences with other UC publications that report on domestic or CA resident students only. Note that URM's only are calculated as a percentage of domestic students.

2 Family Income is expressed in 1999 dollars. Low family income is defined as less than or equal to \$30,000 in 1999 dollars.

3 American Indian, African American, Chicano, or Latino. Following longstanding UC reporting practices, this indicator has been calculated as a fraction of domestic students only.

4 Counts for Eligibility in the Local Context Program include all ELC students, not only newly eligible students. Note that admit rates include applicants that cancelled before being admitted. Thus, ELC admit rates will be less than 100%. ELC 2001 counts do not include Special Process.

5 Outreach participants include students who participated in EAOP, MESA, Puente or School University Partnership programs only. The sum of campus counts exceeds systemwide counts since students can apply to more than one campus. Information for 2002 is not yet available.



# UC LOS ANGELES FIRST-TIME FRESHMEN

Source: SYSTEMWIDE ADMISSIONS DATA

Fall Term

## CAMPUS PROFILE

	1994	1995	1996	1997	1998	1999	2000	2001	2002
<b>Total Number</b>									
Applicants	23,557	25,458	28,061	29,299	32,792	35,682	37,803	40,744	43,436
Admits	11,794	10,745	10,911	10,647	10,827	10,296	10,943	10,956	10,454
Enrolled Students	4,125	3,703	3,820	3,811	4,200	4,130	4,200	4,246	4,257
<b>Percent</b>									
Admit Rate	50.1%	42.2%	38.9%	36.3%	33.0%	28.9%	28.9%	26.9%	24.1%
Enrollment Rate	35.0%	34.5%	35.0%	35.8%	38.8%	40.1%	38.4%	38.8%	40.7%

## APPLICANTS<sup>1</sup>

	1994	1995	1996	1997	1998	1999	2000	2001	2002
<b>Percent of Applicants</b>									
First-Generation College	30.2%	29.8%	30.1%	28.8%	28.0%	27.7%	28.3%	28.5%	29.2%
Low Family Income <sup>2</sup>	23.1%	22.5%	21.7%	20.2%	18.6%	17.4%	18.8%	18.0%	18.2%
Students from California Low-Performing Schools	na	na	na	na	15.7%	15.0%	16.1%	16.0%	17.5%
California Rural Students	2.8%	3.2%	3.3%	3.7%	4.3%	4.5%	4.6%	4.7%	5.0%
California Urban Students	38.7%	38.8%	38.1%	36.9%	36.2%	35.7%	35.8%	35.9%	37.0%
California Suburban Students	46.4%	47.2%	49.0%	46.9%	46.5%	45.0%	44.4%	43.9%	43.8%
Underrepresented Minorities <sup>3</sup>	21.2%	22.0%	20.4%	18.7%	17.7%	17.0%	18.1%	19.1%	20.3%
ELC Students <sup>4</sup>	na	na	na	na	na	na	na	16.0%	18.2%
Outreach Participants <sup>5</sup>	na	na	na	na	8.2%	8.3%	9.3%	11.6%	na

## ADMITS<sup>1</sup>

	1994	1995	1996	1997	1998	1999	2000	2001	2002
<b>Percent of Admits</b>									
First-Generation College	28.6%	27.6%	25.7%	23.5%	22.6%	24.2%	24.4%	24.7%	27.4%
Low Family Income <sup>2</sup>	23.9%	21.6%	19.4%	17.4%	16.7%	17.4%	18.2%	18.1%	20.1%
Students from California Low-Performing Schools	na	na	na	na	13.8%	15.1%	15.7%	16.8%	19.1%
California Rural Students	3.0%	3.7%	3.1%	3.8%	3.8%	4.5%	4.2%	4.6%	4.5%
California Urban Students	47.8%	48.4%	50.2%	47.7%	47.4%	46.8%	48.4%	46.5%	46.0%
California Suburban Students	38.7%	38.3%	38.2%	37.2%	36.7%	38.0%	37.5%	38.8%	39.4%
Underrepresented Minorities <sup>3</sup>	24.4%	26.7%	22.9%	20.0%	12.7%	14.0%	14.6%	15.6%	16.8%
ELC Students <sup>4</sup>	na	na	na	na	na	na	na	35.7%	40.4%
Outreach Participants <sup>5</sup>	na	na	na	na	7.7%	9.3%	10.6%	14.5%	na

## ENROLLMENTS<sup>1</sup>

	1994	1995	1996	1997	1998	1999	2000	2001	2002
<b>Percent of enrollments</b>									
First-Generation College	32.5%	31.3%	31.9%	27.6%	27.5%	29.5%	28.5%	30.1%	32.4%
Low Family Income <sup>2</sup>	28.5%	24.6%	23.2%	19.3%	20.1%	20.7%	21.3%	22.5%	24.2%
Students from California Low-Performing Schools	na	na	na	na	18.1%	18.3%	19.1%	20.9%	23.3%
California Rural Students	2.8%	3.2%	3.2%	4.1%	3.8%	4.6%	3.7%	4.4%	4.3%
California Urban Students	39.0%	39.5%	40.1%	39.0%	39.4%	39.8%	38.2%	40.4%	42.1%
California Suburban Students	50.2%	51.1%	51.6%	49.2%	49.4%	48.7%	52.0%	49.3%	47.4%
Underrepresented Minorities <sup>3</sup>	26.0%	30.1%	25.5%	21.8%	14.3%	16.0%	16.9%	17.5%	19.3%
ELC Students <sup>4</sup>	na	na	na	na	na	na	na	30.3%	35.4%
Outreach Participants <sup>5</sup>	na	na	na	na	9.4%	10.8%	11.3%	17.2%	na

1 For internal consistency, percentages have been calculated as a fraction of all students, international and domestic. This will result in minor differences with other UC publications that report on domestic or CA resident students only. Note that URMs only are calculated as a percentage of domestic students.

2 Family Income is expressed in 1999 dollars. Low family income is defined as less than or equal to \$30,000 in 1999 dollars.

3 American Indian, African American, Chicano, or Latino. Following longstanding UC reporting practices, this indicator has been calculated as a fraction of domestic students only.

4 Counts for Eligibility in the Local Context Program include all ELC students, not only newly eligible students. Note that admit rates include applicants that cancelled before being admitted. Thus, ELC admit rates will be less than 100%. ELC 2001 counts do not include Special Process.

5 Outreach participants include students who participated in EAOP, MESA, Puente or School University Partnership programs only. The sum of campus counts exceeds systemwide counts since students can apply to more than one campus. Information for 2002 is not yet available.

#### ADMIT RATES

	1994	1995	1996	1997	1998	1999	2000	2001	2002
<b>Percent of applicants admitted</b>									
First-Generation College	47.4%	39.0%	33.1%	29.7%	26.7%	25.2%	24.9%	23.3%	22.6%
Low Family Income <sup>2</sup>	51.8%	40.5%	34.8%	31.2%	29.6%	28.8%	28.0%	27.0%	26.7%
Students from California Low-Performing Schools	na	na	na	na	28.9%	29.0%	28.3%	28.2%	26.4%
California Rural Students	53.1%	49.3%	36.3%	37.1%	29.5%	28.5%	26.3%	26.0%	21.6%
California Urban Students	50.1%	41.7%	39.0%	36.7%	33.5%	30.7%	30.3%	29.1%	25.6%
California Suburban Students	51.6%	43.3%	39.8%	36.9%	33.7%	30.0%	31.6%	28.5%	25.3%
Underrepresented Minorities <sup>3</sup>	58.6%	52.4%	44.2%	40.0%	24.0%	24.1%	23.8%	22.4%	20.2%
ELC Students <sup>4</sup>	na	na	na	na	na	na	na	60.1%	53.4%
Outreach Participants <sup>5</sup>	na	na	na	na	30.9%	32.4%	33.1%	33.6%	na
All Students	<b>50.1%</b>	<b>42.2%</b>	<b>38.9%</b>	<b>36.3%</b>	<b>33.0%</b>	<b>28.9%</b>	<b>28.9%</b>	<b>26.9%</b>	<b>24.1%</b>

#### ENROLLMENT RATES

	1994	1995	1996	1997	1998	1999	2000	2001	2002
<b>Percent of admits who enrolled</b>									
First-Generation College	39.8%	39.0%	43.4%	42.0%	47.1%	48.8%	44.8%	47.2%	48.0%
Low Family Income <sup>2</sup>	41.7%	39.3%	41.8%	39.8%	46.9%	47.7%	44.9%	48.3%	48.9%
Students from California Low-Performing Schools	na	na	na	na	50.9%	48.6%	46.6%	48.1%	49.7%
California Rural Students	32.0%	29.9%	36.4%	38.9%	38.0%	41.6%	34.0%	37.4%	38.8%
California Urban Students	35.3%	35.5%	36.7%	37.5%	41.6%	42.0%	39.1%	40.4%	43.5%
California Suburban Students	36.8%	36.3%	36.0%	36.9%	40.4%	41.8%	41.2%	41.1%	41.9%
Underrepresented Minorities <sup>3</sup>	37.4%	39.1%	39.2%	39.2%	44.0%	46.2%	44.5%	43.8%	46.8%
ELC Students <sup>4</sup>	na	na	na	na	na	na	na	32.9%	35.6%
Outreach Participants <sup>5</sup>	na	na	na	na	47.2%	46.9%	40.9%	45.9%	na
All Students	<b>35.0%</b>	<b>34.5%</b>	<b>35.0%</b>	<b>35.8%</b>	<b>38.8%</b>	<b>40.1%</b>	<b>38.4%</b>	<b>38.8%</b>	<b>40.7%</b>

1 For internal consistency, percentages have been calculated as a fraction of all students, international and domestic. This will result in minor differences with other UC publications that report on domestic or CA resident students only. Note that URMs only are calculated as a percentage of domestic students.

2 Family Income is expressed in 1999 dollars. Low family income is defined as less than or equal to \$30,000 in 1999 dollars.

3 American Indian, African American, Chicano, or Latino. Following longstanding UC reporting practices, this indicator has been calculated as a fraction of domestic students only.

4 Counts for Eligibility in the Local Context Program include all ELC students, not only newly eligible students. Note that admit rates include applicants that cancelled before being admitted. Thus, ELC admit rates will be less than 100%. ELC 2001 counts do not include Special Process.

5 Outreach participants include students who participated in EAOP, MESA, Puente or School University Partnership programs only. The sum of campus counts exceeds systemwide counts since students can apply to more than one campus. Information for 2002 is not yet available.

**UC RIVERSIDE FIRST-TIME FRESHMEN**  
**Source: SYSTEMWIDE ADMISSIONS DATA**  
**Fall Term**

**CAMPUS PROFILE**

	1994	1995	1996	1997	1998	1999	2000	2001	2002
<b>Total Number</b>									
Applicants	9,663	9,773	10,108	10,388	11,956	16,211	18,515	20,933	22,913
Admits	7,455	7,578	7,832	8,665	9,541	13,663	15,755	17,841	18,758
Enrolled Students	1,369	1,498	1,407	2,056	2,231	2,649	3,046	3,232	3,507
<b>Percent</b>									
Admit Rate	77.1%	77.5%	77.5%	83.4%	79.8%	84.3%	85.1%	85.2%	81.9%
Enrollment Rate	18.4%	19.8%	18.0%	23.7%	23.4%	19.4%	19.3%	18.1%	18.7%

**APPLICANTS<sup>1</sup>**

	1994	1995	1996	1997	1998	1999	2000	2001	2002
<b>Percent of Applicants</b>									
First-Generation College	39.1%	39.5%	40.0%	38.9%	39.8%	38.3%	39.7%	39.1%	38.4%
Low Family Income <sup>2</sup>	29.3%	29.6%	28.3%	28.1%	26.8%	24.0%	25.3%	23.7%	22.7%
Students from California Low-Performing Schools	na	na	na	na	26.8%	23.8%	25.2%	23.3%	25.2%
California Rural Students	4.9%	4.6%	5.1%	5.6%	6.6%	7.2%	7.0%	7.3%	7.5%
California Urban Students	40.8%	41.3%	41.5%	40.0%	40.3%	39.8%	41.2%	40.3%	41.3%
California Suburban Students	47.6%	49.3%	49.1%	48.6%	48.4%	48.2%	47.9%	48.7%	48.1%
Underrepresented Minorities <sup>3</sup>	22.8%	25.2%	24.1%	22.3%	24.0%	23.3%	24.5%	25.8%	26.8%
ELC Students <sup>4</sup>	na	na	na	na	na	na	na	7.6%	10.5%
Outreach Participants <sup>5</sup>	na	na	na	na	14.7%	13.1%	13.7%	15.9%	na

**ADMITS<sup>1</sup>**

	1994	1995	1996	1997	1998	1999	2000	2001	2002
<b>Percent of Admits</b>									
First-Generation College	39.9%	39.7%	39.4%	39.2%	39.2%	37.4%	38.7%	37.6%	36.8%
Low Family Income <sup>2</sup>	30.0%	29.3%	28.1%	28.3%	25.9%	23.0%	24.3%	22.1%	20.6%
Students from California Low-Performing Schools	na	na	na	na	26.3%	23.3%	24.5%	21.7%	23.1%
California Rural Students	5.2%	5.1%	5.3%	5.7%	6.8%	7.6%	7.2%	7.4%	7.8%
California Urban Students	49.0%	50.1%	50.2%	49.4%	50.1%	49.0%	49.3%	50.3%	49.5%
California Suburban Students	41.5%	41.7%	41.7%	40.6%	39.8%	40.0%	40.8%	39.9%	40.7%
Underrepresented Minorities <sup>3</sup>	22.4%	24.7%	22.0%	20.8%	21.7%	21.5%	22.7%	23.7%	24.5%
ELC Students <sup>4</sup>	na	na	na	na	na	na	na	8.9%	12.1%
Outreach Participants <sup>5</sup>	na	na	na	na	14.7%	13.1%	13.4%	15.5%	na

**ENROLLMENTS<sup>1</sup>**

	1994	1995	1996	1997	1998	1999	2000	2001	2002
<b>Percent of enrollments</b>									
First-Generation College	49.5%	45.3%	45.5%	45.4%	43.4%	45.4%	46.1%	43.6%	43.8%
Low Family Income <sup>2</sup>	35.3%	31.3%	30.0%	32.0%	29.7%	27.6%	29.0%	26.8%	25.2%
Students from California Low-Performing Schools	na	na	na	na	32.3%	31.1%	32.0%	27.5%	32.0%
California Rural Students	6.9%	6.9%	7.2%	7.1%	9.1%	8.4%	8.6%	8.2%	8.1%
California Urban Students	45.1%	42.3%	40.9%	41.0%	39.4%	40.4%	41.7%	39.4%	39.8%
California Suburban Students	44.5%	48.4%	50.3%	49.1%	49.4%	48.3%	47.7%	50.6%	50.3%
Underrepresented Minorities <sup>3</sup>	30.8%	30.0%	25.8%	22.7%	25.8%	27.6%	29.0%	28.3%	31.7%
ELC Students <sup>4</sup>	na	na	na	na	na	na	na	6.8%	8.0%
Outreach Participants <sup>5</sup>	na	na	na	na	17.6%	18.0%	16.8%	18.5%	na

1 For internal consistency, percentages have been calculated as a fraction of all students, international and domestic. This will result in minor differences with other UC publications that report on domestic or CA resident students only. Note that URMs only are calculated as a percentage of domestic students.

2 Family Income is expressed in 1999 dollars. Low family income is defined as less than or equal to \$30,000 in 1999 dollars.

3 American Indian, African American, Chicano, or Latino. Following longstanding UC reporting practices, this indicator has been calculated as a fraction of domestic students only.

4 Counts for Eligibility in the Local Context Program include all ELC students, not only newly eligible students. Note that admit rates include applicants that cancelled before being admitted. Thus, ELC admit rates will be less than 100%. ELC 2001 counts do not include Special Process.  
 5 Outreach participants include students who participated in EAOP, MESA, Puente or School University Partnership programs only. The sum of campus counts exceeds systemwide counts since students can apply to more than one campus. Information for 2002 is not yet available.

#### ADMIT RATES

	1994	1995	1996	1997	1998	1999	2000	2001	2002
<b>Percent of applicants admitted</b>									
First-Generation College	78.6%	77.9%	76.3%	84.1%	78.5%	82.3%	82.9%	82.0%	78.5%
Low Family Income <sup>2</sup>	79.1%	76.9%	76.8%	84.1%	77.0%	80.7%	81.7%	79.4%	74.5%
Students from California Low-Performing Schools	na	na	na	na	78.5%	82.5%	82.8%	79.3%	75.0%
California Rural Students	81.4%	86.6%	80.9%	85.8%	82.1%	88.4%	88.4%	86.4%	85.2%
California Urban Students	78.6%	78.2%	77.9%	84.5%	78.8%	84.8%	84.3%	84.4%	80.6%
California Suburban Students	79.3%	78.7%	79.1%	84.7%	82.7%	85.7%	87.6%	88.1%	84.3%
Underrepresented Minorities <sup>3</sup>	76.8%	77.2%	71.4%	78.6%	72.5%	78.5%	79.2%	79.0%	75.3%
ELC Students <sup>4</sup>	na	na	na	na	na	na	na	99.8%	95.0%
Outreach Participants <sup>5</sup>	na	na	na	na	79.9%	84.4%	83.3%	83.5%	na
All Students	<b>77.1%</b>	<b>77.5%</b>	<b>77.5%</b>	<b>83.4%</b>	<b>79.8%</b>	<b>84.3%</b>	<b>85.1%</b>	<b>85.2%</b>	<b>81.9%</b>

#### ENROLLMENT RATES

	1994	1995	1996	1997	1998	1999	2000	2001	2002
<b>Percent of admits who enrolled</b>									
First-Generation College	22.8%	22.6%	20.8%	27.5%	25.9%	23.5%	23.0%	21.0%	22.3%
Low Family Income <sup>2</sup>	21.6%	21.1%	19.2%	26.8%	26.9%	23.2%	23.1%	22.0%	22.9%
Students from California Low-Performing Schools	na	na	na	na	28.7%	25.9%	25.3%	23.0%	25.9%
California Rural Students	24.5%	26.7%	24.4%	29.2%	31.3%	21.5%	23.1%	20.1%	19.5%
California Urban Students	20.0%	20.0%	17.6%	24.0%	23.1%	19.6%	19.7%	17.9%	18.3%
California Suburban Students	16.7%	19.1%	18.0%	23.6%	23.1%	19.1%	18.7%	18.2%	19.0%
Underrepresented Minorities <sup>3</sup>	25.3%	24.2%	21.1%	26.1%	27.9%	24.8%	24.6%	21.6%	24.0%
ELC Students <sup>4</sup>	na	na	na	na	na	na	na	13.8%	12.2%
Outreach Participants <sup>5</sup>	na	na	na	na	28.0%	26.7%	24.2%	21.5%	na
All Students	<b>18.4%</b>	<b>19.8%</b>	<b>18.0%</b>	<b>23.7%</b>	<b>23.4%</b>	<b>19.4%</b>	<b>19.3%</b>	<b>18.1%</b>	<b>18.7%</b>

1 For internal consistency, percentages have been calculated as a fraction of all students, international and domestic. This will result in minor differences with other UC publications that report on domestic or CA resident students only. Note that URM's only are calculated as a percentage of domestic students.

2 Family Income is expressed in 1999 dollars. Low family income is defined as less than or equal to \$30,000 in 1999 dollars.

3 American Indian, African American, Chicano, or Latino. Following longstanding UC reporting practices, this indicator has been calculated as a fraction of domestic students only.

4 Counts for Eligibility in the Local Context Program include all ELC students, not only newly eligible students. Note that admit rates include applicants that cancelled before being admitted. Thus, ELC admit rates will be less than 100%. ELC 2001 counts do not include Special Process.

5 Outreach participants include students who participated in EAOP, MESA, Puente or School University Partnership programs only. The sum of campus counts exceeds systemwide counts since students can apply to more than one campus. Information for 2002 is not yet available.

**UC SAN DIEGO FIRST-TIME FRESHMEN**  
**Source: SYSTEMWIDE ADMISSIONS DATA**  
**Fall Term**

**CAMPUS PROFILE**

	1994	1995	1996	1997	1998	1999	2000	2001	2002
<b>Total Number</b>									
Applicants	19,949	21,503	23,638	25,016	28,030	32,482	35,693	38,188	41,346
Admits	12,701	12,473	11,853	13,303	13,406	13,115	13,643	16,390	16,960
Enrolled Students	2,803	2,989	2,681	3,198	3,320	3,227	3,122	3,981	4,243
<b>Percent</b>									
Admit Rate	63.7%	58.0%	50.1%	53.2%	47.8%	40.4%	38.2%	42.9%	41.0%
Enrollment Rate	22.1%	24.0%	22.6%	24.0%	24.8%	24.6%	22.9%	24.3%	25.0%

**APPLICANTS<sup>1</sup>**

	1994	1995	1996	1997	1998	1999	2000	2001	2002
<b>Percent of Applicants</b>									
First-Generation College	24.6%	24.9%	25.3%	24.2%	24.4%	25.3%	26.4%	26.7%	27.7%
Low Family Income <sup>2</sup>	17.5%	17.3%	17.4%	16.2%	14.8%	14.8%	16.4%	15.7%	16.4%
Students from California Low-Performing Schools	na	na	na	na	12.5%	12.5%	14.1%	13.7%	15.0%
California Rural Students	4.2%	4.6%	4.8%	5.4%	5.5%	6.2%	6.2%	6.4%	6.5%
California Urban Students	37.0%	37.8%	37.5%	36.0%	35.1%	35.7%	35.7%	35.6%	36.7%
California Suburban Students	48.9%	49.5%	50.6%	49.5%	49.1%	46.9%	47.1%	46.4%	46.0%
Underrepresented Minorities <sup>3</sup>	15.9%	16.0%	14.9%	13.8%	13.8%	14.2%	15.3%	16.3%	16.9%
ELC Students <sup>4</sup>	na	na	na	na	na	na	na	14.9%	17.6%
Outreach Participants <sup>5</sup>	na	na	na	na	6.7%	7.2%	8.3%	10.5%	na

**ADMITS<sup>1</sup>**

	1994	1995	1996	1997	1998	1999	2000	2001	2002
<b>Percent of Admits</b>									
First-Generation College	23.4%	22.1%	21.7%	22.1%	20.5%	23.2%	25.2%	24.0%	28.7%
Low Family Income <sup>2</sup>	17.9%	16.7%	16.5%	15.8%	14.4%	16.3%	17.4%	15.2%	19.1%
Students from California Low-Performing Schools	na	na	na	na	11.2%	12.7%	14.7%	12.2%	16.6%
California Rural Students	4.2%	4.5%	4.7%	5.4%	5.3%	6.3%	6.3%	6.7%	7.1%
California Urban Students	50.1%	51.0%	51.9%	50.5%	50.5%	49.6%	50.4%	49.1%	49.3%
California Suburban Students	37.8%	38.2%	37.7%	36.8%	35.9%	37.5%	37.1%	37.2%	39.7%
Underrepresented Minorities <sup>3</sup>	16.2%	14.6%	14.9%	14.7%	9.7%	10.4%	11.5%	11.1%	14.2%
ELC Students <sup>4</sup>	na	na	na	na	na	na	na	30.8%	38.1%
Outreach Participants <sup>5</sup>	na	na	na	na	6.5%	7.5%	9.4%	10.7%	na

**ENROLLMENTS<sup>1</sup>**

	1994	1995	1996	1997	1998	1999	2000	2001	2002
<b>Percent of enrollments</b>									
First-Generation College	27.6%	25.8%	25.6%	25.8%	24.5%	28.8%	29.1%	27.2%	32.4%
Low Family Income <sup>2</sup>	21.8%	20.5%	17.6%	17.8%	16.7%	18.6%	19.3%	15.8%	21.2%
Students from California Low-Performing Schools	na	na	na	na	11.7%	14.5%	15.6%	11.2%	15.9%
California Rural Students	4.6%	5.0%	5.7%	6.3%	6.8%	8.0%	8.8%	7.3%	7.8%
California Urban Students	41.5%	39.9%	39.6%	37.5%	37.9%	37.3%	36.6%	37.6%	39.4%
California Suburban Students	47.5%	49.9%	50.9%	50.8%	49.1%	49.4%	50.6%	50.2%	50.3%
Underrepresented Minorities <sup>3</sup>	16.0%	11.3%	13.6%	13.4%	10.5%	10.3%	11.3%	9.2%	12.4%
ELC Students <sup>4</sup>	na	na	na	na	na	na	na	24.0%	29.6%
Outreach Participants <sup>5</sup>	na	na	na	na	7.5%	8.1%	9.5%	11.2%	na

1 For internal consistency, percentages have been calculated as a fraction of all students, international and domestic. This will result in minor differences with other UC publications that report on domestic or CA resident students only. Note that URM's only are calculated as a percentage of domestic students.

2 Family Income is expressed in 1999 dollars. Low family income is defined as less than or equal to \$30,000 in 1999 dollars.

3 American Indian, African American, Chicano, or Latino. Following longstanding UC reporting practices, this indicator has been calculated as a fraction of domestic students only.

4 Counts for Eligibility in the Local Context Program include all ELC students, not only newly eligible students. Note that admit rates include applicants that cancelled before being admitted. Thus, ELC admit rates will be less than 100%. ELC 2001 counts do not include Special Process.  
 5 Outreach participants include students who participated in EAOP, MESA, Puente or School University Partnership programs only. The sum of campus counts exceeds systemwide counts since students can apply to more than one campus. Information for 2002 is not yet available.

#### ADMIT RATES

	1994	1995	1996	1997	1998	1999	2000	2001	2002
<b>Percent of applicants admitted</b>									
First-Generation College	60.8%	51.6%	43.1%	48.6%	40.2%	37.1%	36.5%	38.6%	42.6%
Low Family Income <sup>2</sup>	65.0%	56.0%	47.6%	51.7%	46.5%	44.4%	40.6%	41.5%	48.0%
Students from California Low-Performing Schools	na	na	na	na	43.0%	41.2%	40.0%	38.3%	45.6%
California Rural Students	62.9%	57.2%	49.6%	53.9%	46.4%	41.2%	38.8%	44.7%	45.1%
California Urban Students	65.0%	58.7%	50.4%	54.4%	49.0%	42.4%	39.8%	44.8%	44.5%
California Suburban Students	65.3%	59.7%	51.4%	54.2%	49.1%	42.7%	40.9%	45.4%	43.9%
Underrepresented Minorities <sup>3</sup>	65.3%	53.5%	50.5%	57.5%	34.0%	29.8%	29.0%	29.5%	34.8%
ELC Students <sup>4</sup>	na	na	na	na	na	na	na	88.4%	88.9%
Outreach Participants <sup>5</sup>	na	na	na	na	46.1%	42.1%	43.1%	43.8%	na
All Students	<b>63.7%</b>	<b>58.0%</b>	<b>50.1%</b>	<b>53.2%</b>	<b>47.8%</b>	<b>40.4%</b>	<b>38.2%</b>	<b>42.9%</b>	<b>41.0%</b>

#### ENROLLMENT RATES

	1994	1995	1996	1997	1998	1999	2000	2001	2002
<b>Percent of admits who enrolled</b>									
First-Generation College	26.0%	28.0%	26.6%	28.0%	29.7%	30.5%	26.3%	27.5%	28.2%
Low Family Income <sup>2</sup>	26.9%	29.4%	24.1%	27.1%	28.6%	28.1%	25.3%	25.3%	27.7%
Students from California Low-Performing Schools	na	na	na	na	25.9%	28.1%	24.2%	22.3%	24.0%
California Rural Students	24.5%	26.3%	27.5%	27.7%	31.4%	31.2%	31.7%	26.4%	27.3%
California Urban Students	24.3%	25.1%	23.7%	24.5%	26.1%	24.5%	22.6%	24.6%	24.8%
California Suburban Students	20.9%	23.5%	22.2%	24.2%	24.1%	24.5%	23.0%	24.8%	25.5%
Underrepresented Minorities <sup>3</sup>	21.8%	18.5%	20.8%	21.9%	26.8%	24.3%	22.6%	20.3%	22.0%
ELC Students <sup>4</sup>	na	na	na	na	na	na	na	18.9%	19.5%
Outreach Participants <sup>5</sup>	na	na	na	na	28.7%	26.5%	23.3%	25.4%	na
All Students	<b>22.1%</b>	<b>24.0%</b>	<b>22.6%</b>	<b>24.0%</b>	<b>24.8%</b>	<b>24.6%</b>	<b>22.9%</b>	<b>24.3%</b>	<b>25.0%</b>

1 For internal consistency, percentages have been calculated as a fraction of all students, international and domestic. This will result in minor differences with other UC publications that report on domestic or CA resident students only. Note that URM's only are calculated as a percentage of domestic students.

2 Family Income is expressed in 1999 dollars. Low family income is defined as less than or equal to \$30,000 in 1999 dollars.

3 American Indian, African American, Chicano, or Latino. Following longstanding UC reporting practices, this indicator has been calculated as a fraction of domestic students only.

4 Counts for Eligibility in the Local Context Program include all ELC students, not only newly eligible students. Note that admit rates include applicants that cancelled before being admitted. Thus, ELC admit rates will be less than 100%. ELC 2001 counts do not include Special Process.

5 Outreach participants include students who participated in EAOP, MESA, Puente or School University Partnership programs only. The sum of campus counts exceeds systemwide counts since students can apply to more than one campus. Information for 2002 is not yet available.

# UC SANTA BARBARA FIRST-TIME FRESHMEN

Source: SYSTEMWIDE ADMISSIONS DATA

Fall Term

## CAMPUS PROFILE

	1994	1995	1996	1997	1998	1999	2000	2001	2002
<b>Total Number</b>									
Applicants	17,055	18,279	19,217	20,702	23,695	26,952	31,224	34,018	34,690
Admits	14,082	14,759	14,948	14,756	14,420	14,375	14,677	17,013	17,692
Enrolled Students	2,875	3,351	3,454	3,738	3,581	3,776	3,424	3,644	3,838
<b>Percent</b>									
Admit Rate	82.6%	80.7%	77.8%	71.3%	60.9%	53.3%	47.0%	50.0%	51.0%
Enrollment Rate	20.4%	22.7%	23.1%	25.3%	24.8%	26.3%	23.3%	21.4%	21.7%

## APPLICANTS<sup>1</sup>

	1994	1995	1996	1997	1998	1999	2000	2001	2002
<b>Percent of Applicants</b>									
First-Generation College	27.5%	28.3%	27.9%	26.7%	26.0%	26.3%	26.8%	27.4%	27.1%
Low Family Income <sup>2</sup>	18.2%	18.3%	17.1%	16.2%	14.4%	14.0%	15.6%	15.2%	15.0%
Students from California Low-Performing Schools	na	na	na	na	13.1%	13.1%	14.2%	14.3%	14.6%
California Rural Students	5.8%	6.1%	7.0%	7.4%	7.2%	8.0%	7.5%	7.7%	7.5%
California Urban Students	36.1%	36.6%	35.6%	34.9%	34.1%	34.2%	35.1%	34.7%	35.1%
California Suburban Students	48.8%	49.9%	50.3%	49.3%	48.9%	47.8%	47.4%	47.5%	47.8%
Underrepresented Minorities <sup>3</sup>	18.8%	19.4%	18.7%	18.6%	16.8%	16.7%	17.4%	18.7%	18.8%
ELC Students <sup>4</sup>	na	na	na	na	na	na	na	9.9%	11.6%
Outreach Participants <sup>5</sup>	na	na	na	na	7.6%	7.8%	8.7%	10.4%	na

## ADMITS<sup>1</sup>

	1994	1995	1996	1997	1998	1999	2000	2001	2002
<b>Percent of Admits</b>									
First-Generation College	27.0%	27.2%	27.2%	26.4%	24.0%	26.0%	26.4%	26.5%	27.5%
Low Family Income <sup>2</sup>	17.8%	17.5%	16.8%	16.7%	13.4%	14.5%	16.8%	15.5%	16.0%
Students from California Low-Performing Schools	na	na	na	na	13.4%	13.9%	15.6%	15.0%	16.2%
California Rural Students	6.2%	6.6%	7.7%	8.3%	7.9%	8.6%	8.5%	8.8%	9.0%
California Urban Students	50.0%	50.8%	50.6%	48.9%	48.9%	47.2%	47.9%	47.9%	47.6%
California Suburban Students	36.2%	36.0%	35.5%	34.9%	33.4%	34.3%	34.7%	34.3%	34.8%
Underrepresented Minorities <sup>3</sup>	17.7%	18.0%	18.6%	19.8%	16.0%	15.7%	16.6%	17.5%	17.9%
ELC Students <sup>4</sup>	na	na	na	na	na	na	na	18.2%	20.9%
Outreach Participants <sup>5</sup>	na	na	na	na	8.0%	8.5%	10.2%	11.5%	na

## ENROLLMENTS<sup>1</sup>

	1994	1995	1996	1997	1998	1999	2000	2001	2002
<b>Percent of enrollments</b>									
First-Generation College	28.8%	28.9%	27.7%	27.4%	25.2%	28.1%	27.0%	28.7%	29.5%
Low Family Income <sup>2</sup>	19.2%	17.8%	17.4%	16.4%	12.0%	13.9%	15.3%	13.9%	14.6%
Students from California Low-Performing Schools	na	na	na	na	13.9%	13.6%	15.4%	14.3%	16.6%
California Rural Students	7.1%	7.8%	9.2%	9.8%	9.7%	9.8%	10.8%	11.6%	12.0%
California Urban Students	34.4%	34.6%	34.4%	34.1%	32.2%	32.9%	33.7%	31.2%	32.4%
California Suburban Students	50.8%	52.4%	50.0%	49.8%	49.7%	48.9%	47.5%	49.2%	48.0%
Underrepresented Minorities <sup>3</sup>	17.2%	17.5%	18.8%	18.2%	18.5%	16.7%	18.1%	18.8%	20.5%
ELC Students <sup>4</sup>	na	na	na	na	na	na	na	11.6%	12.8%
Outreach Participants <sup>5</sup>	na	na	na	na	8.2%	8.6%	9.5%	10.7%	na

1 For internal consistency, percentages have been calculated as a fraction of all students, international and domestic. This will result in minor differences with other UC publications that report on domestic or CA resident students only. Note that URMs only are calculated as a percentage of domestic students.

2 Family Income is expressed in 1999 dollars. Low family income is defined as less than or equal to \$30,000 in 1999 dollars.

3 American Indian, African American, Chicano, or Latino. Following longstanding UC reporting practices, this indicator has been calculated as a fraction of domestic students only.

4 Counts for Eligibility in the Local Context Program include all ELC students, not only newly eligible students. Note that admit rates include applicants that cancelled before being admitted. Thus, ELC admit rates will be less than 100%. ELC 2001 counts do not include Special Process.  
 5 Outreach participants include students who participated in EAOP, MESA, Puente or School University Partnership programs only. The sum of campus counts exceeds systemwide counts since students can apply to more than one campus. Information for 2002 is not yet available.

#### ADMIT RATES

	1994	1995	1996	1997	1998	1999	2000	2001	2002
<b>Percent of applicants admitted</b>									
First-Generation College	81.0%	77.5%	75.8%	70.4%	56.3%	52.7%	46.3%	48.4%	51.8%
Low Family Income <sup>2</sup>	80.7%	77.5%	76.7%	73.4%	56.7%	55.3%	50.6%	51.3%	54.1%
Students from California Low-Performing Schools	na	na	na	na	61.9%	56.5%	51.7%	52.7%	56.4%
California Rural Students	88.1%	86.7%	86.5%	80.0%	66.3%	57.7%	53.5%	57.5%	61.7%
California Urban Students	82.8%	79.5%	77.6%	71.3%	59.7%	53.4%	46.5%	49.4%	50.4%
California Suburban Students	84.5%	82.3%	78.3%	70.7%	60.9%	52.6%	47.5%	50.4%	50.8%
Underrepresented Minorities <sup>3</sup>	78.0%	75.4%	77.7%	76.5%	58.0%	50.3%	45.1%	47.1%	48.7%
ELC Students <sup>4</sup>	na	na	na	na	na	na	na	91.9%	92.1%
Outreach Participants <sup>5</sup>	na	na	na	na	63.6%	58.5%	54.9%	55.3%	na
All Students	<b>82.6%</b>	<b>80.7%</b>	<b>77.8%</b>	<b>71.3%</b>	<b>60.9%</b>	<b>53.3%</b>	<b>47.0%</b>	<b>50.0%</b>	<b>51.0%</b>

#### ENROLLMENT RATES

	1994	1995	1996	1997	1998	1999	2000	2001	2002
<b>Percent of admits who enrolled</b>									
First-Generation College	21.8%	24.1%	23.5%	26.3%	26.0%	28.4%	23.9%	23.2%	23.3%
Low Family Income <sup>2</sup>	22.0%	23.0%	23.9%	24.9%	22.2%	25.1%	21.3%	19.1%	19.9%
Students from California Low-Performing Schools	na	na	na	na	25.8%	25.6%	23.0%	20.4%	22.3%
California Rural Students	23.5%	27.0%	27.4%	29.9%	30.6%	30.0%	29.7%	28.0%	28.8%
California Urban Students	19.4%	21.8%	22.4%	24.8%	23.9%	25.2%	22.6%	19.4%	20.2%
California Suburban Students	20.8%	23.4%	22.9%	25.8%	25.2%	27.2%	23.2%	22.0%	21.9%
Underrepresented Minorities <sup>3</sup>	19.8%	22.2%	23.5%	23.4%	28.8%	27.9%	25.5%	23.1%	24.9%
ELC Students <sup>4</sup>	na	na	na	na	na	na	na	13.7%	13.3%
Outreach Participants <sup>5</sup>	na	na	na	na	25.5%	26.4%	21.7%	20.0%	na
All Students	<b>20.4%</b>	<b>22.7%</b>	<b>23.1%</b>	<b>25.3%</b>	<b>24.8%</b>	<b>26.3%</b>	<b>23.3%</b>	<b>21.4%</b>	<b>21.7%</b>

1 For internal consistency, percentages have been calculated as a fraction of all students, international and domestic. This will result in minor differences with other UC publications that report on domestic or CA resident students only. Note that URMs only are calculated as a percentage of domestic students.

2 Family Income is expressed in 1999 dollars. Low family income is defined as less than or equal to \$30,000 in 1999 dollars.

3 American Indian, African American, Chicano, or Latino. Following longstanding UC reporting practices, this indicator has been calculated as a fraction of domestic students only.

4 Counts for Eligibility in the Local Context Program include all ELC students, not only newly eligible students. Note that admit rates include applicants that cancelled before being admitted. Thus, ELC admit rates will be less than 100%. ELC 2001 counts do not include Special Process.

5 Outreach participants include students who participated in EAOP, MESA, Puente or School University Partnership programs only. The sum of campus counts exceeds systemwide counts since students can apply to more than one campus. Information for 2002 is not yet available.



# UC SANTA CRUZ FIRST-TIME FRESHMEN

Source: SYSTEMWIDE ADMISSIONS DATA

Fall Term

## CAMPUS PROFILE

	1994	1995	1996	1997	1998	1999	2000	2001	2002
<b>Total Number</b>									
Applicants	10,838	11,361	11,356	11,958	13,845	14,420	19,273	22,403	24,200
Admits	8,885	9,452	9,412	9,843	10,902	10,979	16,020	18,602	19,991
Enrolled Students	1,731	1,783	1,979	2,081	2,310	2,354	2,873	2,965	3,171
<b>Percent</b>									
Admit Rate	82.0%	83.2%	82.9%	82.3%	78.7%	76.1%	83.1%	83.0%	82.6%
Enrollment Rate	19.5%	18.9%	21.0%	21.1%	21.2%	21.4%	17.9%	15.9%	15.9%

## APPLICANTS<sup>1</sup>

	1994	1995	1996	1997	1998	1999	2000	2001	2002
<b>Percent of Applicants</b>									
First-Generation College	28.1%	28.3%	28.3%	27.2%	26.9%	27.1%	28.8%	29.4%	29.0%
Low Family Income <sup>2</sup>	20.3%	19.7%	18.9%	18.1%	16.1%	16.4%	16.4%	16.4%	15.6%
Students from California Low-Performing Schools	na	na	na	na	14.0%	13.5%	14.5%	15.0%	14.6%
California Rural Students	6.5%	6.5%	7.7%	8.1%	8.0%	8.6%	8.8%	8.9%	8.2%
California Urban Students	39.8%	38.7%	37.4%	36.7%	36.0%	36.6%	37.2%	37.0%	37.5%
California Suburban Students	40.7%	43.1%	43.8%	42.0%	42.6%	41.8%	44.1%	45.0%	45.8%
Underrepresented Minorities <sup>3</sup>	20.9%	22.1%	19.8%	18.5%	17.6%	17.2%	18.1%	19.6%	19.4%
ELC Students <sup>4</sup>	na	na	na	na	na	na	na	8.8%	7.5%
Outreach Participants <sup>5</sup>	na	na	na	na	9.1%	9.2%	9.9%	11.8%	na

## ADMITS<sup>1</sup>

	1994	1995	1996	1997	1998	1999	2000	2001	2002
<b>Percent of Admits</b>									
First-Generation College	27.4%	28.2%	27.5%	26.4%	25.6%	26.4%	27.8%	28.0%	27.5%
Low Family Income <sup>2</sup>	19.5%	19.2%	18.1%	17.5%	15.3%	16.1%	15.4%	14.9%	13.9%
Students from California Low-Performing Schools	na	na	na	na	13.4%	13.1%	13.8%	13.8%	13.3%
California Rural Students	7.0%	7.2%	8.3%	8.8%	8.6%	9.8%	9.3%	9.4%	8.7%
California Urban Students	41.6%	44.0%	44.3%	42.4%	43.7%	42.2%	45.6%	46.7%	47.6%
California Suburban Students	40.8%	39.0%	38.1%	37.4%	36.1%	37.3%	37.2%	36.9%	37.4%
Underrepresented Minorities <sup>3</sup>	20.4%	22.5%	19.4%	17.7%	16.2%	15.9%	16.9%	17.9%	17.5%
ELC Students <sup>4</sup>	na	na	na	na	na	na	na	10.5%	9.0%
Outreach Participants <sup>5</sup>	na	na	na	na	9.3%	9.7%	9.8%	11.6%	na

## ENROLLMENTS<sup>1</sup>

	1994	1995	1996	1997	1998	1999	2000	2001	2002
<b>Percent of enrollments</b>									
First-Generation College	28.5%	28.4%	25.5%	26.3%	24.3%	24.1%	25.6%	24.9%	25.5%
Low Family Income <sup>2</sup>	19.3%	19.8%	16.9%	17.7%	15.4%	14.3%	14.2%	12.9%	12.3%
Students from California Low-Performing Schools	na	na	na	na	12.5%	11.7%	13.1%	11.7%	11.3%
California Rural Students	10.2%	10.4%	11.5%	11.9%	12.0%	12.1%	11.3%	10.7%	11.0%
California Urban Students	39.9%	38.8%	36.5%	37.5%	33.4%	36.0%	34.8%	35.4%	35.1%
California Suburban Students	39.8%	40.7%	42.0%	38.2%	42.9%	40.8%	43.5%	44.6%	45.6%
Underrepresented Minorities <sup>3</sup>	20.5%	22.0%	16.8%	14.7%	16.4%	15.6%	15.9%	17.4%	17.3%
ELC Students <sup>4</sup>	na	na	na	na	na	na	na	3.9%	3.7%
Outreach Participants <sup>5</sup>	na	na	na	na	8.8%	9.0%	9.5%	10.7%	na

1 For internal consistency, percentages have been calculated as a fraction of all students, international and domestic. This will result in minor differences with other UC publications that report on domestic or CA resident students only. Note that URM's only are calculated as a percentage of domestic students.

2 Family Income is expressed in 1999 dollars. Low family income is defined as less than or equal to \$30,000 in 1999 dollars.

3 American Indian, African American, Chicano, or Latino. Following longstanding UC reporting practices, this indicator has been calculated as a fraction of domestic students only.

4 Counts for Eligibility in the Local Context Program include all ELC students, not only newly eligible students. Note that admit rates include applicants that cancelled before being admitted. Thus, ELC admit rates will be less than 100%. ELC 2001 counts do not include Special Process.  
 5 Outreach participants include students who participated in EAOP, MESA, Puente or School University Partnership programs only. The sum of campus counts exceeds systemwide counts since students can apply to more than one campus. Information for 2002 is not yet available.

#### ADMIT RATES

	1994	1995	1996	1997	1998	1999	2000	2001	2002
<b>Percent of applicants admitted</b>									
First-Generation College	80.0%	82.9%	80.4%	80.1%	75.1%	74.3%	80.0%	79.1%	78.4%
Low Family Income <sup>2</sup>	79.1%	81.2%	79.8%	79.8%	74.9%	74.7%	78.0%	75.4%	73.2%
Students from California Low-Performing Schools	na	na	na	na	75.6%	74.3%	79.4%	76.2%	75.2%
California Rural Students	87.8%	91.8%	89.7%	89.6%	84.5%	87.4%	88.4%	87.5%	87.2%
California Urban Students	84.1%	83.8%	84.4%	83.9%	79.2%	77.4%	83.0%	83.0%	82.3%
California Suburban Students	83.9%	85.0%	84.0%	82.9%	80.7%	76.8%	86.0%	86.2%	85.8%
Underrepresented Minorities <sup>3</sup>	80.2%	85.8%	81.7%	79.6%	72.9%	70.9%	78.1%	76.6%	74.9%
ELC Students <sup>4</sup>	na	na	na	na	na	na	na	99.4%	99.1%
Outreach Participants <sup>5</sup>	na	na	na	na	81.0%	80.0%	81.9%	81.7%	na
All Students	<b>82.0%</b>	<b>83.2%</b>	<b>82.9%</b>	<b>82.3%</b>	<b>78.7%</b>	<b>76.1%</b>	<b>83.1%</b>	<b>83.0%</b>	<b>82.6%</b>

#### ENROLLMENT RATES

	1994	1995	1996	1997	1998	1999	2000	2001	2002
<b>Percent of admits who enrolled</b>									
First-Generation College	20.3%	19.1%	19.5%	21.0%	20.1%	19.6%	16.5%	14.2%	14.7%
Low Family Income <sup>2</sup>	19.2%	19.4%	19.6%	21.4%	21.3%	19.0%	16.6%	13.8%	14.0%
Students from California Low-Performing Schools	na	na	na	na	19.8%	19.1%	17.0%	13.5%	13.4%
California Rural Students	28.5%	27.4%	29.0%	28.5%	29.7%	26.3%	21.8%	18.2%	20.2%
California Urban Students	19.1%	18.8%	20.1%	21.2%	19.6%	20.7%	16.8%	15.3%	14.9%
California Suburban Students	18.6%	17.4%	19.9%	19.1%	20.8%	20.8%	17.1%	15.2%	15.2%
Underrepresented Minorities <sup>3</sup>	19.6%	18.5%	18.2%	17.6%	21.6%	21.2%	17.0%	15.5%	15.8%
ELC Students <sup>4</sup>	na	na	na	na	na	na	na	6.0%	6.4%
Outreach Participants <sup>5</sup>	na	na	na	na	20.1%	20.0%	17.4%	14.6%	na
All Students	<b>19.5%</b>	<b>18.9%</b>	<b>21.0%</b>	<b>21.1%</b>	<b>21.2%</b>	<b>21.4%</b>	<b>17.9%</b>	<b>15.9%</b>	<b>15.9%</b>

1 For internal consistency, percentages have been calculated as a fraction of all students, international and domestic. This will result in minor differences with other UC publications that report on domestic or CA resident students only. Note that URM's only are calculated as a percentage of domestic students.

2 Family Income is expressed in 1999 dollars. Low family income is defined as less than or equal to \$30,000 in 1999 dollars.

3 American Indian, African American, Chicano, or Latino. Following longstanding UC reporting practices, this indicator has been calculated as a fraction of domestic students only.

4 Counts for Eligibility in the Local Context Program include all ELC students, not only newly eligible students. Note that admit rates include applicants that cancelled before being admitted. Thus, ELC admit rates will be less than 100%. ELC 2001 counts do not include Special Process.

5 Outreach participants include students who participated in EAOP, MESA, Puente or School University Partnership programs only. The sum of campus counts exceeds systemwide counts since students can apply to more than one campus. Information for 2002 is not yet available.



Table B: Eligibility in the Local Context, 2000-01

- Number of Applications, Admits and Enrollments for ELC and Non-ELC California Residents by Campus and Ethnicity, 2000
- Number of Applications, Admits and Enrollments for ELC and Non-ELC California Residents by Campus and Ethnicity, 2001
- Number of Applications, Admits and Enrollments for ELC and Non-ELC California Residents by Campus and Ethnicity, 2002
- Number of ELC and Non-ELC California Resident Enrollments and Proportion of Underrepresented Minorities in ELC and Non-ELC California Resident Enrollments

**Number of Applications, Admits and Enrollments for ELC and Non-ELC California Residents by Campus and Ethnicity  
Fall 2000 Admissions Cycle**

		University Wide		Berkeley		Davis		Irvine		Los Angeles		Riverside		San Diego		Santa Barbara		Santa Cruz	
		ELC	Non ELC	ELC	Non ELC	ELC	Non ELC	ELC	Non ELC	ELC	Non ELC	ELC	Non ELC	ELC	Non ELC	ELC	Non ELC	ELC	Non ELC
All ethnicities	Net Applications		55,966		25,804		23,398		23,045		31,888		17,961		31,805		28,283		17,779
	Total Admits		46,645		9,782		15,167		13,369		10,031		15,498		12,984		13,612		15,155
	Enrolls		26,796		3,342		4,110		3,525		3,927		3,006		3,012		3,189		2,685
American Indian	Net Applications		370		143		146		99		174		85		177		201		147
	Total Admits		289		55		87		63		48		79		57		93		123
	Enrolls		161		19		31		18		16		13		14		26		24
African American	Net Applications		2,368		1,180		856		741		1,467		945		1,041		916		602
	Total Admits		1,539		385		403		260		329		660		205		352		422
	Enrolls		832		143		111		68		147		180		26		90		67
Chicano	Net Applications		6,195		2,341		1,890		2,505		3,375		2,700		2,946		3,005		1,981
	Total Admits		4,865		761		1,166		1,184		861		2,227		958		1,434		1,607
	Enrolls		2,630		228		321		279		391		549		238		351		273
Latino	Net Applications		2,020		862		656		782		1,167		692		986		1,079		640
	Total Admits		1,555		318		388		406		311		563		324		503		514
	Enrolls		848		92		97		112		129		123		67		138		90
Asian and Pacific Islander	Net Applications		18,130		10,356		8,498		11,393		12,487		7,313		11,727		7,374		4,670
	Total Admits		15,522		3,817		5,456		6,591		4,119		6,306		5,176		3,419		3,818
	Enrolls		10,178		1,510		1,538		1,973		1,605		1,329		1,197		510		516
White	Net Applications		21,563		8,272		9,131		5,565		10,223		4,789		11,803		12,919		7,790
	Total Admits		18,402		3,360		6,273		3,663		3,341		4,430		4,860		6,413		7,003
	Enrolls		9,755		986		1,775		784		1,269		654		1,147		1,746		1,394
Other ethnicities	Net Applications		1,199		543		509		493		653		396		642		577		414
	Total Admits		919		166		299		257		175		327		204		227		333
	Enrolls		510		56		100		71		80		46		49		55		53
Decline to State	Net Applications		4,121		2,107		1,712		1,467		2,342		1,041		2,483		2,212		1,535
	Total Admits		3,554		920		1,095		945		847		906		1,200		1,171		1,335
	Enrolls		1,882		308		137		220		290		112		274		273		268
URM	Net Applications		10,953		4,526		3,548		4,127		6,183		4,422		5,150		5,201		3,370
	Total Admits		8,248		1,519		2,044		1,913		1,549		3,529		1,544		2,382		2,666
	Enrolls		4,471		482		560		477		683		865		345		605		454
NonURM	Net Applications		45,013		21,278		19,850		18,918		25,705		13,539		26,655		23,082		14,409
	Total Admits		38,397		8,263		13,123		11,456		8,482		11,969		11,440		11,230		12,489
	Enrolls		22,325		2,860		3,550		3,048		3,244		2,141		2,667		2,584		2,231

Note: Underrepresented minorities include American Indian, African American, Chicano, or Latino. Counts for Eligibility in the Local Context Program include all ELC students, not only newly eligible students. ELC 2001 counts do not include Special Process. The data are only for California residents. This will result in minor differences with other UC publications that report on domestic or total number students.

Source: Data are from the UCOP Corporate Student Systems UAD database, final version. Results for Fall 2001 exclude one ELC student who applied as a transfer student, not as a freshman. The 'Net Applications' statistic excludes applicants who cancelled their applications. The Total 'Admits' statistic includes Spring Rollover Admits, which are only employed at the Berkeley and Santa Cruz campuses. For Fall 2002, data are from the 1/16/02 UC systemwide admissions database.

## Number of Applications, Admits and Enrollments for ELC and Non-ELC California Residents by Campus and Ethnicity Fall 2001 Admissions Cycle

		University Wide		Berkeley		Davis		Irvine		Los Angeles		Riverside		San Diego		Santa Barbara		Santa Cruz	
		ELC	Non ELC	ELC	Non ELC	ELC	Non ELC	ELC	Non ELC	ELC	Non ELC	ELC	Non ELC	ELC	Non ELC	ELC	Non ELC	ELC	Non ELC
All ethnicities	Net Applications	9,110	50,456	5,742	22,092	3,494	22,159	4,239	22,773	6,363	27,843	1,587	18,511	5,600	28,052	3,328	27,200	1,954	18,582
	Total Admits	9,110	42,049	4,245	5,765	3,362	13,139	4,181	12,062	3,906	5,993	1,587	15,821	5,043	10,293	3,090	12,459	1,952	15,527
	Enrolls	5,517	23,226	1,373	2,152	573	3,676	570	3,251	1,287	2,702	220	2,907	954	2,866	423	2,955	117	2,717
American Indian	Net Applications	57	317	34	132	26	141	23	101	36	142	8	98	28	155	27	174	17	138
	Total Admits	57	256	25	33	26	83	23	57	18	26	8	86	24	30	25	78	17	111
	Enrolls	29	135	6	14	5	34	4	16	6	6	2	13	1	8	4	23	1	21
African American	Net Applications	206	2,372	131	1,152	63	827	85	844	152	1,371	64	1,001	92	1,023	63	980	58	686
	Total Admits	206	1,518	87	272	57	371	84	336	84	241	64	662	65	171	51	374	58	425
	Enrolls	94	762	20	117	9	100	11	102	27	110	8	151	9	24	8	81	2	77
Chicano	Net Applications	1,253	5,804	675	2,024	393	1,841	661	2,472	878	3,047	394	2,746	623	2,751	549	3,012	357	2,063
	Total Admits	1,253	4,452	449	524	371	1,076	644	925	454	508	394	2,181	461	639	473	1,296	355	1,564
	Enrolls	703	2,284	116	173	58	306	117	247	173	267	54	515	93	160	65	351	27	265
Latino	Net Applications	293	1,893	176	800	90	699	150	806	215	1,087	76	779	139	910	118	1,045	77	752
	Total Admits	293	1,492	122	184	84	391	147	366	116	179	76	647	116	249	107	440	77	597
	Enrolls	154	733	36	55	10	94	19	96	46	89	14	118	13	54	12	125	4	102
Asian and Pacific Islander	Net Applications	3,110	15,956	2,400	8,705	1,199	8,003	1,862	10,656	2,565	10,533	551	7,315	2,153	10,308	685	7,388	450	4,809
	Total Admits	3,110	13,475	1,783	2,158	1,162	4,782	1,837	5,474	1,675	2,364	551	6,227	1,978	4,252	642	3,338	450	3,829
	Enrolls	2,208	8,918	713	887	210	1,566	272	1,685	543	1,134	65	1,317	351	1,345	42	484	12	500
White	Net Applications	3,360	18,933	1,774	6,863	1,427	8,340	1,118	5,789	1,919	8,799	388	4,968	2,039	10,043	1,577	11,738	822	8,052
	Total Admits	3,360	16,481	1,350	1,930	1,372	5,047	1,111	3,694	1,183	1,991	388	4,611	1,900	3,746	1,498	5,533	822	7,210
	Enrolls	1,893	8,343	347	659	253	1,369	116	826	379	839	75	624	406	993	256	1,612	61	1,421
Other ethnicities	Net Applications	168	1,141	112	523	53	511	88	525	128	661	36	404	96	585	67	614	34	453
	Total Admits	168	886	78	118	52	283	84	253	70	111	36	336	86	188	62	250	34	362
	Enrolls	104	433	18	35	16	82	15	66	29	52	1	60	21	42	4	52	-	44
Decline to State	Net Applications	663	4,040	440	1,893	243	1,797	252	1,580	470	2,203	70	1,200	430	2,277	242	2,249	139	1,629
	Total Admits	663	3,489	351	546	238	1,106	251	957	306	573	70	1,071	413	1,018	232	1,150	139	1,429
	Enrolls	332	1,618	117	212	12	125	16	213	84	205	1	109	60	240	32	227	10	287
URM	Net Applications	1,809	10,386	1,016	4,108	572	3,508	919	4,223	1,281	5,647	542	4,624	882	4,839	757	5,211	509	3,639
	Total Admits	1,809	7,718	683	1,013	538	1,921	898	1,684	672	954	542	3,576	666	1,089	656	2,188	507	2,697
	Enrolls	980	3,914	178	359	82	534	151	461	252	472	78	797	116	246	89	580	34	465
Non-URM	Net Applications	7301	40070	4726	17984	2922	18651	3320	18550	5082	22196	1045	13887	4718	23213	2571	21989	1445	14943
	Total Admits	7,301	34,331	3,562	4,752	2,824	11,218	3,283	10,378	3,234	5,039	1,045	12,245	4,377	9,204	2,434	10,271	1,445	12,830
	Enrolls	4537	19312	1195	1793	491	3142	419	2790	1035	2230	142	2110	838	2620	334	2375	83	2252

Note: Underrepresented minorities include American Indian, African American, Chicano, or Latino. Counts for Eligibility in the Local Context Program include all ELC students, not only newly eligible students. ELC 2001 counts do not include Special Process. The data are only for California residents. This will result in minor differences with other UC publications that report on domestic or total number students.

Source: Data are from the UCOP Corporate Student Systems UAD database, final version. Results for Fall 2001 exclude one ELC student who applied as a transfer student, not as a freshman. The 'Net Applications' statistic excludes applicants who cancelled their applications. The Total 'Admits' statistic includes Spring Rollover Admits, which are only employed at the Berkeley and Santa Cruz campuses. For Fall 2002, data are from the 1/16/02 UC systemwide admissions database.

## Number of Applications, Admits and Enrollments for ELC and Non-ELC California Residents by Campus and Ethnicity Fall 2002 Admissions Cycle

		University Wide		Berkeley		Davis		Irvine		Los Angeles		Riverside		San Diego		Santa Barbara		Santa Cruz	
		ELC	Non ELC	ELC	Non ELC	ELC	Non ELC	ELC	Non ELC	ELC	Non ELC	ELC	Non ELC	ELC	Non ELC	ELC	Non ELC	ELC	Non ELC
All ethnicities	Net Applications	10,805	51,630	6,562	22,193	4,092	22,736	4,657	23,955	7,744	29,242	2,405	19,722	7,114	29,608	3,989	27,521	1,825	20,690
	Total Admits	10,801	43,375	4,747	4,888	3,999	13,253	4,655	11,974	4,236	5,304	2,390	16,771	6,473	10,079	3,710	12,789	1,820	17,274
	Enrolls	6,526	23,382	1,560	1,754	699	3,803	620	3,229	1,503	2,475	279	3,161	1,257	2,921	492	3,107	116	2,932
American Indian	Net Applications	62	348	31	130	28	141	20	114	32	164	17	102	39	183	22	199	14	151
	Total Admits	61	280	21	30	23	87	20	60	18	20	16	85	33	48	20	93	13	130
	Enrolls	34	124	3	8	7	25	2	12	7	10	3	7	8	11	3	25	1	26
African American	Net Applications	302	2,494	201	1,185	84	867	131	977	238	1,487	115	1,162	166	1,103	90	982	39	793
	Total Admits	302	1,614	144	228	78	354	131	277	110	236	113	776	127	212	80	377	39	520
	Enrolls	145	791	39	103	12	79	17	65	35	126	17	203	10	38	12	102	3	75
Chicano	Net Applications	1,518	6,145	793	2,136	430	1,867	788	2,688	1,129	3,409	571	2,966	859	2,935	649	2,994	312	2,300
	Total Admits	1,517	4,689	503	345	413	1,037	788	838	508	491	564	2,300	717	783	568	1,341	309	1,737
	Enrolls	832	2,377	151	140	54	266	104	204	218	250	87	606	134	224	71	390	13	297
Latino	Net Applications	371	2,070	206	838	109	697	178	884	278	1,213	134	891	213	1,008	161	1,102	71	836
	Total Admits	370	1,634	137	172	106	391	178	323	141	179	132	726	189	282	144	495	70	644
	Enrolls	213	814	43	66	17	95	21	75	59	85	14	150	33	65	22	149	4	129
Asian and Pacific Islander	Net Applications	3,622	16,576	2,698	8,897	1,428	8,481	2,014	11,053	2,950	11,052	771	7,716	2,633	11,117	871	7,750	406	5,597
	Total Admits	3,622	14,194	1,957	1,893	1,403	4,918	2,014	5,610	1,804	2,190	768	6,632	2,455	4,143	815	3,587	406	4,432
	Enrolls	2,560	9,184	784	771	256	1,593	282	1,805	631	1,049	69	1,409	464	1,361	57	587	17	609
White	Net Applications	4,115	19,525	2,101	6,994	1,697	8,659	1,215	6,328	2,526	9,400	656	5,448	2,648	10,693	1,874	12,019	847	9,031
	Total Admits	4,114	17,181	1,585	1,711	1,666	5,330	1,213	3,827	1,299	1,689	656	5,020	2,432	3,659	1,781	5,786	847	8,123
	Enrolls	2,295	8,259	432	508	330	1,564	151	800	433	754	81	605	508	963	288	1,587	72	1,478
Other ethnicities	Net Applications	153	987	96	441	55	440	74	480	115	584	35	401	101	538	58	536	27	403
	Total Admits	153	753	61	74	54	227	74	216	49	71	35	311	91	140	51	212	27	298
	Enrolls	93	370	13	19	11	76	11	52	24	44	2	50	21	42	9	54	2	33
Decline to State	Net Applications	662	3,485	436	1,572	261	1,584	237	1,431	476	1,933	106	1,036	455	2,031	264	1,939	109	1,579
	Total Admits	662	3,030	339	435	256	909	237	823	307	428	106	921	429	812	251	898	109	1,390
	Enrolls	354	1,463	95	139	12	105	32	216	96	157	6	131	79	217	30	213	4	285
URM	Net Applications	2,253	11,057	1,231	4,289	651	3,572	1,117	4,663	1,677	6,273	837	5,121	1,277	5,229	922	5,277	436	4,080
	Total Admits	2,250	8,217	805	775	620	1,869	1,117	1,498	777	926	825	3,887	1,066	1,325	812	2,306	431	3,031
	Enrolls	1,224	4,106	236	317	90	465	144	356	319	471	121	966	185	338	108	666	21	527
NonURM	Net Applications	8552	40573	5331	17904	3441	19164	3540	19292	6067	22969	1568	14601	5837	24379	3067	22244	1389	16610
	Total Admits	8,551	35,158	3,942	4,113	3,379	11,384	3,538	10,476	3,459	4,378	1,565	12,884	5,407	8,754	2,898	10,483	1,389	14,243
	Enrolls	5302	19276	1324	1437	609	3338	476	2873	1184	2004	158	2195	1072	2583	384	2441	95	2405

Note: Underrepresented minorities include American Indian, African American, Chicano, or Latino. Counts for Eligibility in the Local Context Program include all ELC students, not only newly eligible students. ELC 2001 counts do not include Special Process. The data are only for California residents. This will result in minor differences with other UC publications that report on domestic or total number students.

Source: Data are from the UCOP Corporate Student Systems UAD database, final version. Results for Fall 2001 exclude one ELC student who applied as a transfer student, not as a freshman. The 'Net Applications' statistic excludes applicants who cancelled their applications. The Total 'Admits' statistic includes Spring Rollover Admits, which are only employed at the Berkeley and Santa Cruz campuses. For Fall 2002, data are from the 1/16/02 UC systemwide admissions databas

**Total Number of ELC and Non-ELC California Resident Enrollments and Proportion of Underrepresented Minorities in ELC and Non-ELC California Resident Enrollments**

	2000			2001			2002			Percent URM		
	ELC	Non	TOTAL	ELC	Non	TOTAL	ELC	Non	TOTAL	ELC	Non	TOTAL
<b>University Wide</b>												
URM Enrolls		4471	<b>4,471</b>	980	3914	<b>4,894</b>	1224	4106	<b>5,330</b>		16.7%	<b>16.7%</b>
NonURM Enrolls		22325	<b>22,325</b>	4537	19312	<b>23,849</b>	5302	19276	<b>24,578</b>	17.8%	16.9%	<b>17.0%</b>
TOTAL		26,796	<b>26,796</b>	5,517	23,226	<b>28,743</b>	6,526	23,382	<b>29,908</b>	18.8%	17.6%	<b>17.8%</b>
<b>Berkeley</b>												
URM Enrolls		482	<b>482</b>	178	359	<b>537</b>	236	317	<b>553</b>		14.4%	<b>14.4%</b>
NonURM Enrolls		2860	<b>2,860</b>	1195	1793	<b>2,988</b>	1324	1437	<b>2,761</b>	13.0%	16.7%	<b>15.2%</b>
TOTAL		3,342	<b>3,342</b>	1,373	2,152	<b>3,525</b>	1,560	1,754	<b>3,314</b>	15.1%	18.1%	<b>16.7%</b>
<b>Davis</b>												
URM Enrolls		560	<b>560</b>	82	534	<b>616</b>	90	465	<b>555</b>		13.6%	<b>13.6%</b>
NonURM Enrolls		3550	<b>3,550</b>	491	3142	<b>3,633</b>	609	3338	<b>3,947</b>	14.3%	14.5%	<b>14.5%</b>
TOTAL		4,110	<b>4,110</b>	573	3,676	<b>4,249</b>	699	3,803	<b>4,502</b>	12.9%	12.2%	<b>12.3%</b>
<b>Irvine</b>												
URM Enrolls		477	<b>477</b>	151	461	<b>612</b>	144	356	<b>500</b>		13.5%	<b>13.5%</b>
NonURM Enrolls		3048	<b>3,048</b>	419	2790	<b>3,209</b>	476	2873	<b>3,349</b>	26.5%	14.2%	<b>16.0%</b>
TOTAL		3,525	<b>3,525</b>	570	3,251	<b>3,821</b>	620	3,229	<b>3,849</b>	23.2%	11.0%	<b>13.0%</b>
<b>Los Angeles</b>												
URM Enrolls		683	<b>683</b>	252	472	<b>724</b>	319	471	<b>790</b>		17.4%	<b>17.4%</b>
NonURM Enrolls		3244	<b>3,244</b>	1035	2230	<b>3,265</b>	1184	2004	<b>3,188</b>	19.6%	17.5%	<b>18.1%</b>
TOTAL		3,927	<b>3,927</b>	1,287	2,702	<b>3,989</b>	1,503	2,475	<b>3,978</b>	21.2%	19.0%	<b>19.9%</b>
<b>Riverside</b>												
URM Enrolls		865	<b>865</b>	78	797	<b>875</b>	121	966	<b>1,087</b>		28.8%	<b>28.8%</b>
NonURM Enrolls		2141	<b>2,141</b>	142	2110	<b>2,252</b>	158	2195	<b>2,353</b>	35.5%	27.4%	<b>28.0%</b>
TOTAL		3,006	<b>3,006</b>	220	2,907	<b>3,127</b>	279	3,161	<b>3,440</b>	43.4%	30.6%	<b>31.6%</b>
<b>San Diego</b>												
URM Enrolls		345	<b>345</b>	116	246	<b>362</b>	185	338	<b>523</b>		11.5%	<b>11.5%</b>
NonURM Enrolls		2667	<b>2,667</b>	838	2620	<b>3,458</b>	1,072	2,583	<b>3,655</b>	12.2%	8.6%	<b>9.5%</b>
TOTAL		3,012	<b>3,012</b>	954	2,866	<b>3,820</b>	1,257	2,921	<b>4,178</b>	14.7%	11.6%	<b>12.5%</b>
<b>Santa Barbara</b>												
URM Enrolls		605	<b>605</b>	89	580	<b>669</b>	108	666	<b>774</b>		19.0%	<b>19.0%</b>
NonURM Enrolls		2584	<b>2,584</b>	334	2375	<b>2,709</b>	384	2441	<b>2,825</b>	21.0%	19.6%	<b>19.8%</b>
TOTAL		3,189	<b>3,189</b>	423	2,955	<b>3,378</b>	492	3,107	<b>3,599</b>	22.0%	21.4%	<b>21.5%</b>
<b>Santa Cruz</b>												
URM Enrolls		454	<b>454</b>	34	465	<b>499</b>	21	527	<b>548</b>		16.9%	<b>16.9%</b>
NonURM Enrolls		2231	<b>2,231</b>	83	2252	<b>2,335</b>	95	2405	<b>2,500</b>	29.1%	17.1%	<b>17.6%</b>
TOTAL		2,685	<b>2,685</b>	117	2,717	<b>2,834</b>	116	2,932	<b>3,048</b>	18.1%	18.0%	<b>18.0%</b>

Note: Underrepresented minorities include American Indian, African American, Chicano, or Latino. Counts for Eligibility in the Local Context Program include all ELC students, not only newly eligible students. ELC 2001 counts do not include Special Process. The data are only for California residents. This will result in minor differences with other UC publications that report on domestic or total number students.

Source: Data are from the UCOP Corporate Student Systems UAD database, final version. Results for Fall 2001 exclude one ELC student who applied as a transfer student, not as a freshman. The 'Net Applications' statistic excludes applicants who cancelled their applications. The Total 'Admits' statistic includes Spring Rollover Admits, which are only employed at the Berkeley and Santa Cruz campuses. For Fall 2002, data are from the 1/16/02 UC systemwide admissions database.