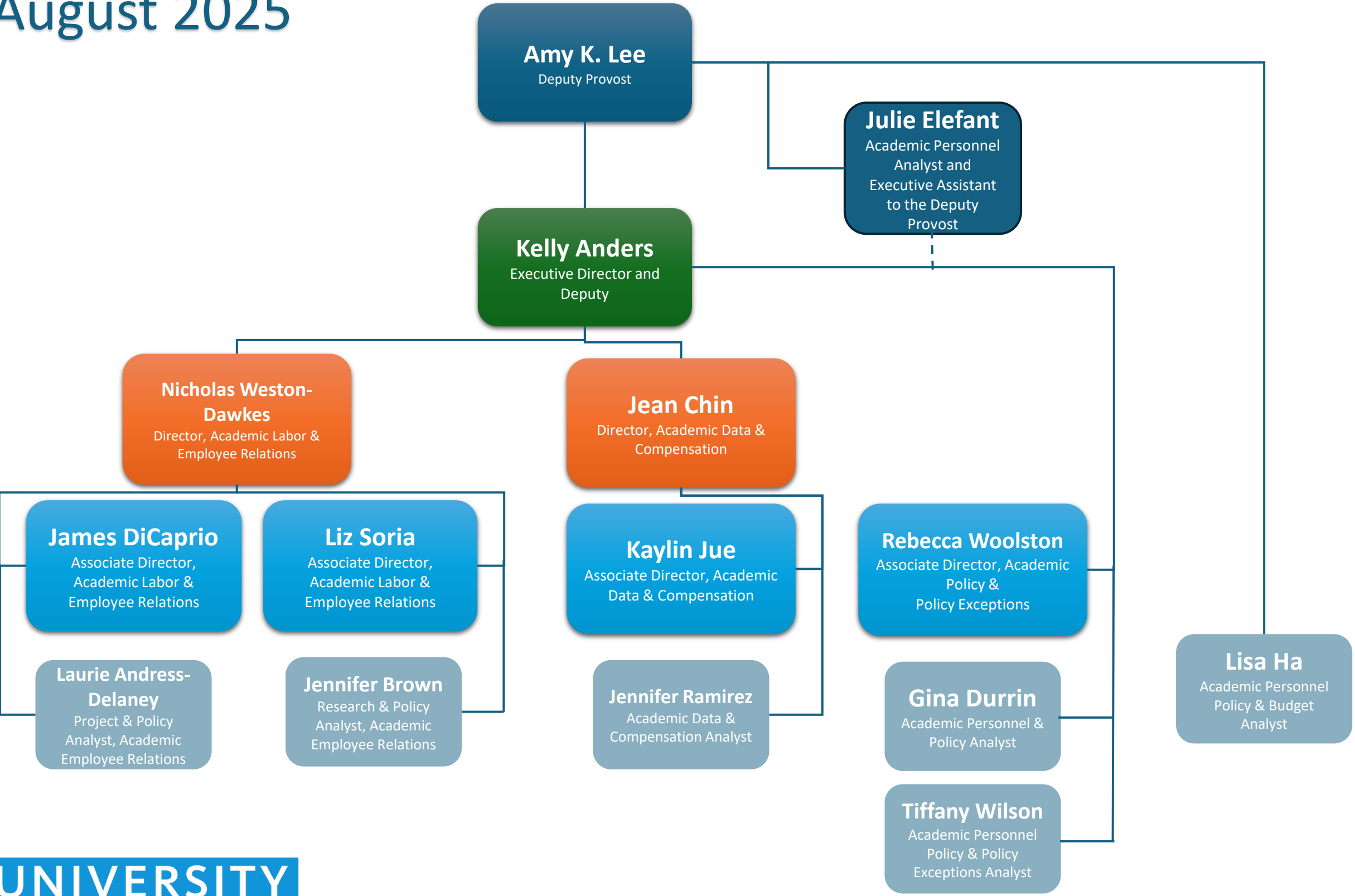


August 2025



Systemwide Academic Personnel Organizational Structure

- ❖ Amy Lee – Deputy Provost of Systemwide Academic Personnel
 - Lisa Ha – Academic Personnel Policy and Budget Analyst
 - Julie Elefant – Academic Policy Analyst and Executive Assistant to the Deputy Provost
- Kelly Anders – Executive Director and Deputy of Systemwide Academic Personnel
 - Rebecca Woolston – Associate Director, Academic Policy and Policy Exceptions
 - Gina Durrin – Academic Personnel Policy Analyst
 - Tiffany Wilson – Academic Personnel Policy and Policy Exceptions Analyst
- Nick Weston-Dawkes – Director, Academic Labor and Employee Relations
 - James DiCaprio – Associate Director, Academic Labor and Employee Relations
 - Liz Soria – Associate Director, Academic Labor and Employee Relations
 - Laurie Andress-Delaney – Project and Policy Analyst, Academic Employee Relations
 - Jennifer Brown – Research and Policy Analyst, Academic Employee Relations
- Jean Chin – Director, Academic Data and Compensation
 - Kaylin Jue – Associate Director, Academic Data and Compensation
 - Jennifer Ramirez – Academic Data and Compensation Analyst