

## Minority Student Representation at UC

The University of California seeks to enroll a student body that reflects the diversity of the state. Recently, a [Hechinger Report analysis](#)<sup>1</sup> found that African American and Latino(a) students were underrepresented at many public flagship universities across the country when compared to their representation among high school graduates. California was found to be among the states with the largest gaps, between the percentage of Latino(a) public high school graduates and the percentage of Latino(a) freshman enrollment at flagship institutions.

UCOP's Institutional Research & Academic Planning (IRAP) and Office of Diversity & Engagement conducted follow-up analyses to better understand similar disparities across the entire UC system. IRAP compared the representation of each racial/ethnic group among public high school graduates, public high school graduates that completed a-g college preparatory courses with freshman applicants, admits and enrollees.

In parallel, Diversity & Engagement compared the racial/ethnic makeup of students through the pipeline from high school enrollment (12<sup>th</sup> grade), to graduates completing the SAT, through application, admission, enrollment, and retention at UC (See the section under Pipeline Analysis).

### High School Graduates and A-G Completion

In 2016, almost 430,000 California public high school students graduated and almost 195,000 (or 45 percent) completed “a-g” college preparatory courses. This report examines the proportion of these populations that apply, are admitted and enroll at UC, findings reveal that:

- 22 percent of all California public high school graduates and 48 percent of those who completed “a-g”, applied to UC;
- 15 percent and 38 percent of those respective populations were admitted to UC;
- 8 percent and 18 percent of those respective populations enrolled at UC.

Appendix A provides similar data by campus, along with race and ethnicity.

### Gap Analysis

Building on the Hechinger Report and providing data for the UC system and all undergraduate campuses, IRAP compared two measures:

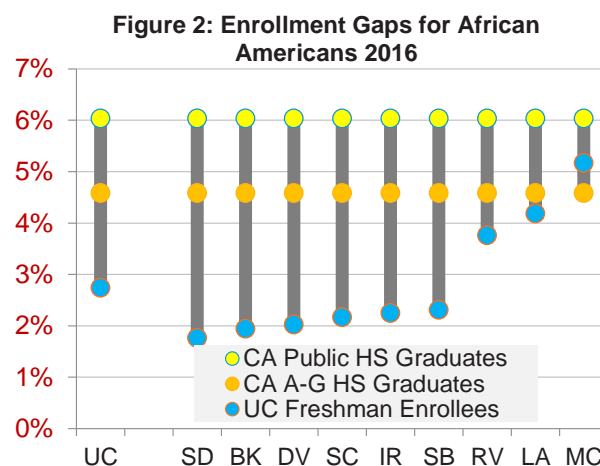
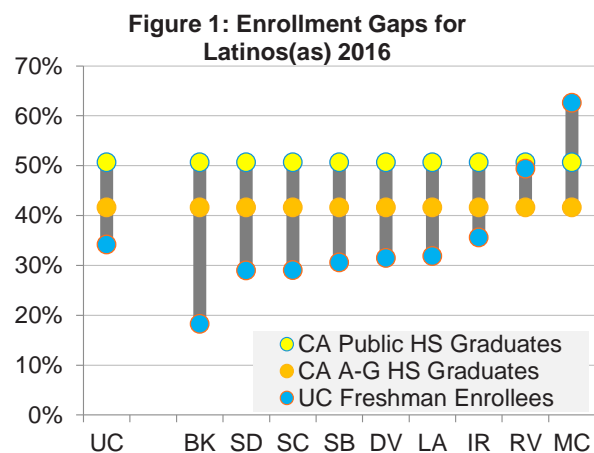
---

<sup>1</sup> <http://hechingerreport.org/many-state-flagship-universities-leave-black-latino-students-behind/>  
07.31.2018

## Minority Student Representation at UC

- **HS graduates gaps** or the gap between the percentage of California public high school graduates and the percentage of UC new freshman enrollees (marked by the distance between the light yellow and blue dots)
- **A-G gaps** or the gap between the percentage of California "a-g" graduates and the percentage of new UC freshman enrollees (marked by the distance between the dark yellow and blue dots)

A full set of gap charts over time for the UC system and by campus is presented in Appendix B.



**Note:** The scale of charts are different.

Overall, the HS graduation gap was larger than the "a-g" gap for both Latino(a) and African American students at most campuses. For the system, there is a

- 17 point and 3 point HS graduation gap for Latino(a) and African American students
- 7 point and just over 1 point "a-g" gap for Latino(a) and African American students

Looking at Latino(a) new freshman enrollees by campus:

- Berkeley was 16 percent enrollment, the lowest in the system, constituting a 30 percentage point HS graduates gap and 24 percentage point "a-g" gap;
- San Diego, Santa Cruz, Santa Barbara, Davis and Los Angeles were around 30 percent and Irvine was 36 percent new freshman enrollees
- Riverside was 49 percent, a 2 point HS graduates gap but 7 points higher for "a-g";

## Minority Student Representation at UC

- Merced was at 63 percent, 12 point higher for HS graduates and 21 points higher for “a-g”.

Overtime, the Latino(a) population has grown in the state and across the UC system. UC Merced, Riverside, Santa Cruz, Santa Barbara and Irvine have all been designated Hispanic Serving Institutions (HSI), and this year, UC Davis achieved eligibility to be designated an HSI.

For African American new freshman enrollees by campus:

- San Diego, Berkeley, Davis, Santa Cruz, Irvine and Santa Barbara had around 2 percent enrollment, constituting a 4 percentage point HS graduates gap and around 3 percentage point “a-g” gap;
- Riverside and UCLA were around 4 percent, with 2 point HS graduates gap and 1 point “a-g” gap;
- Merced was 5 percent of enrollees, with 1 point HS graduates gap and no gap in “a-g”.

Most campuses saw slight increases in the share of African American enrollees over the last six years, with the exception of Berkeley and Riverside. UCLA has a larger number of African American applicants, which in part contributes to lower gaps. In addition, UCLA had a higher “relative” admit and yield rates (e.g., a comparison of the African American admit/yield rate to the overall campus admit/yield rate), indicating African American students are more likely to be admitted and once admitted, more likely to come to UCLA than the system average.

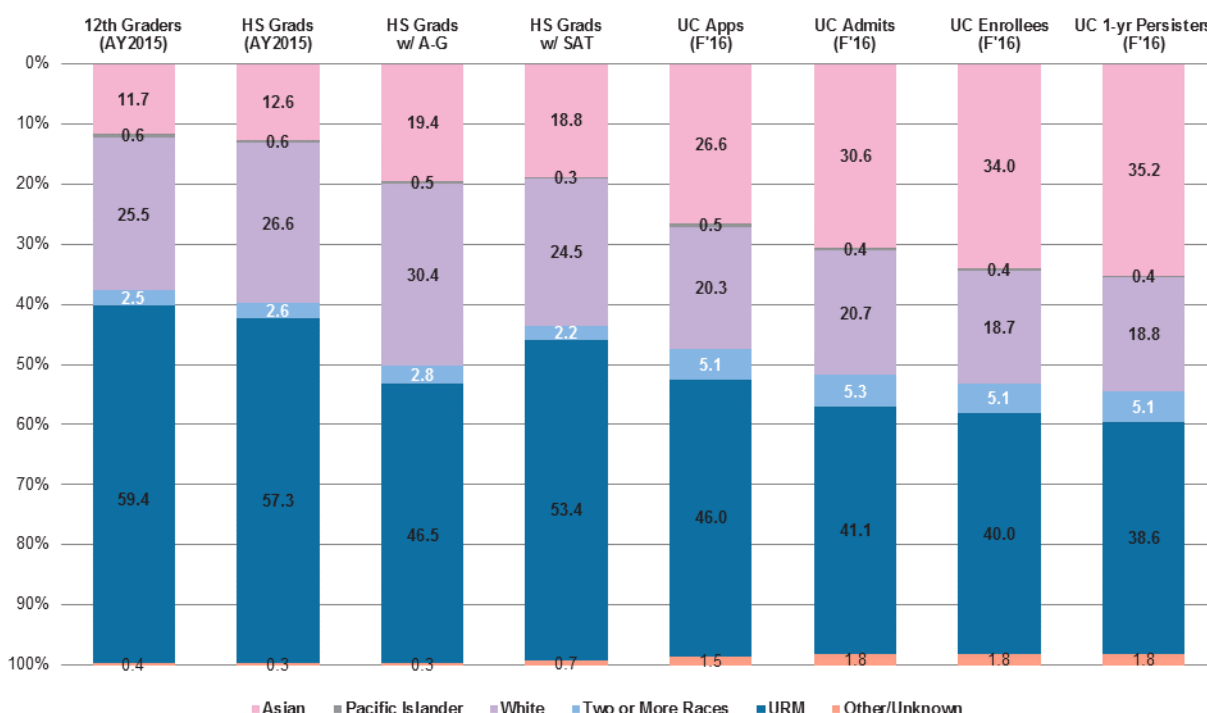
	UCLA		UC System	
	Admit Rate	Yield Rate	Admit Rate	Yield Rate
All Freshman	17%	48%	68%	56%
African American Freshman	15%	57%	50%	53%
Relative Admit/Yield Rates	90%	118%	74%	95%

## Pipeline Analysis

During the 2015-16 academic year, about six in ten California public high school 12th-graders were from underrepresented groups (URG). However, only about four in ten of these 12th-graders who enrolled in UC and persisted past their first year were from URG backgrounds.

## Minority Student Representation at UC

**Figure 3: Racial/ethnic Distribution (% share) of Overall CA Public High School Pipeline to UC**



A full set of charts is presented by campus in Appendix C and by CA region in Appendix D. Figure 3 shows racial/ethnic distributions of the CA public high school pipeline to UC.

- Approximately 60 percent of all CA public high school 12<sup>th</sup> graders were URGs. Of the students who graduated from high school, 57 percent were URGs.
- Of the students who graduated and completed all “a-g” courses with a grade of C or better in each course, 47 percent were URGs. Of the 2015-16 12<sup>th</sup> graders who graduated from a CA public high school and took the SAT, 52 percent were URGs.
- Forty-six percent of UC applicants who were CA public high school graduates that completed the SAT were URGs; 41 percent of admits from the same pool were URGs; 40 percent of enrollees from that pool were URGs; and 39 percent of those persisting through their first year were URGs.

Detailed data by campus (Appendix C) presents similar trends as in Figure 3, with some notable exceptions:

## Minority Student Representation at UC

- Berkeley and Davis had lower shares of URGs applying (38%) and Berkeley had lower shares admitted (25%), enrolling (23%), and persisting (22%);
- Merced and Riverside had higher shares of URGs who applied (61% and 55%), were admitted (56% and 46%), enrolled (68% and 55%), and persisted past their first year (67% and 54%).

UC campuses attract freshmen from their local regions and the major urban areas – Los Angeles County and the San Francisco Bay Area – with an overall local attendance rate of 34 percent within a 50 mile radius of the campus. Regional differences (Appendix D) likely have some effect on the outcomes noted above, specifically:

- the shares of URG students are much lower for students in Northern California and the San Francisco Bay Area (e.g., 25 percent and 27 percent completing “a-g”);
- the shares of URGs in the Central Valley and Los Angeles regions are much higher (e.g., 56 percent and 62 percent completing “a-g”).

In addition, Berkeley’s “relative” admit rate and yield rate for URGs are lowest in the system, particularly the relative yield rate which is above 100 percent for all other UC campuses. UCLA is one of Berkeley’s major competitors for URG admits, along with other private elite universities like Stanford, Harvard, Yale and Brown, which likely affects yield rates.

	Berkeley		UC System	
	Admit Rate	Yield Rate	Admit Rate	Yield Rate
All Freshman	20%	52%	68%	56%
URG Freshman	13%	46%	59%	55%
Relative Admit/Yield Rates	66%	90%	88%	98%

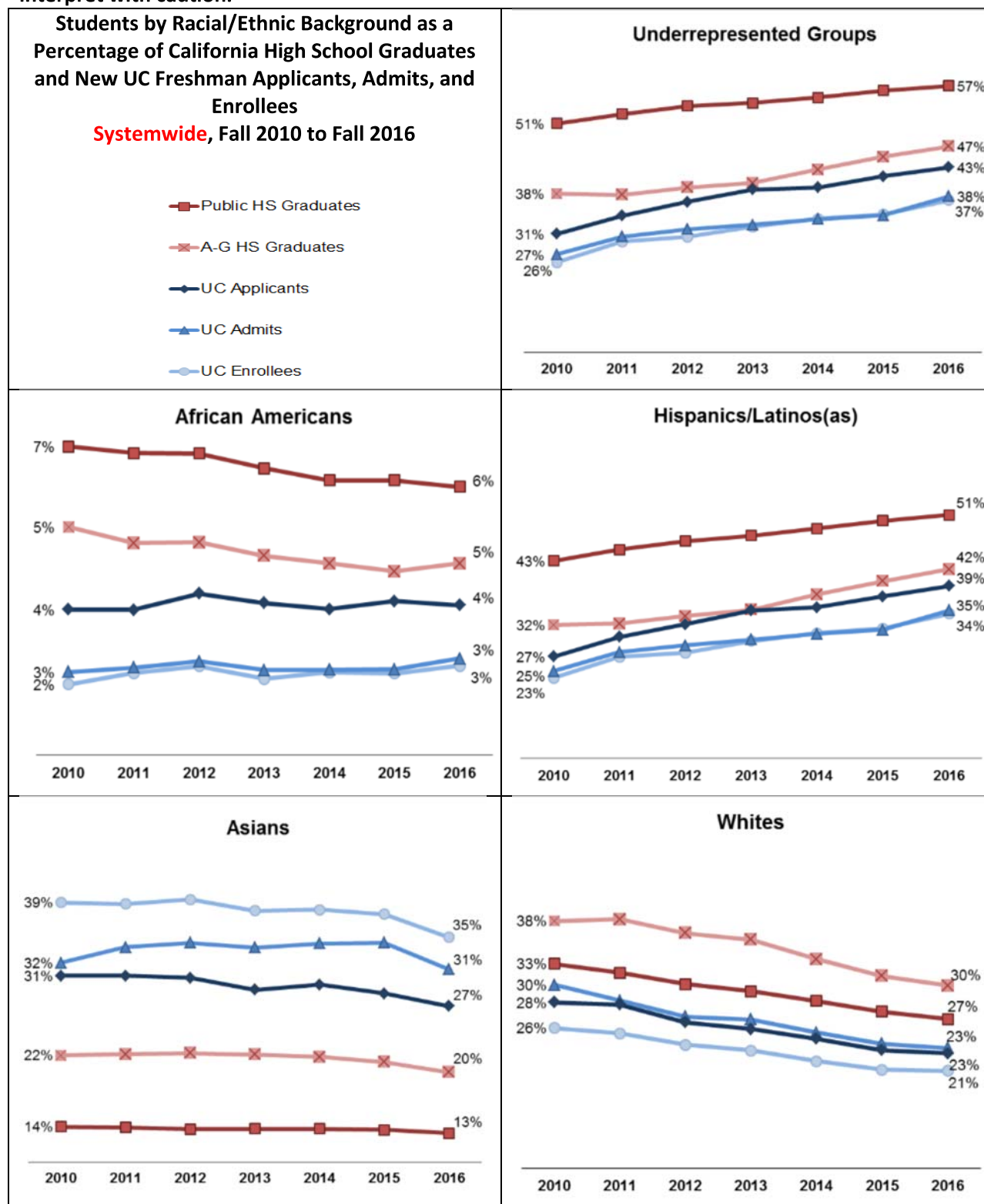
## Appendix A: Number of AY2015 CA Public HS Grads, A-G Grads, and Fall2016 UC Freshman Applicants, Admits, and Enrollees by Ethnicity

	African American	American Indian	Hispanic/L atino(a)	Asian/ Pac Isl	White	Multi- Racial	Total
<i>CA Public HS Grads</i>	25,897	2,595	217,397	56,561	114,408	10,999	429,323
<i>CA A-G HS Grads</i>	8,912	812	80,903	38,793	59,157	5,539	194,698
<i>UC Applicants</i>							
UC	3,643	144	36,099	25,343	21,248	5,017	93,081
BK	1,468	67	11,885	13,475	9,172	2,294	39,302
DV	1,557	53	13,682	15,047	10,226	2,395	43,896
LA	2,020	82	17,883	16,584	10,832	2,808	51,308
RV	1,668	29	15,963	10,764	3,906	1,278	34,118
SD	1,607	66	15,059	17,427	10,801	2,757	48,778
SC	1,151	59	13,913	9,703	8,684	1,850	36,019
SB	1,596	79	17,008	14,028	12,167	2,579	48,442
IR	1,763	60	19,936	19,173	8,211	2,466	52,599
MC	817	12	9,677	4,691	1,911	614	17,961
<i>UC Admits</i>							
UC	1,811	84	21,816	19,694	14,720	3,477	62,892
BK	185	16	1,574	3,298	1,991	495	7,874
DV	360	20	4,379	6,068	4,438	945	16,666
LA	312	24	2,380	3,308	1,994	540	8,842
RV	769	16	8,795	8,454	3,042	954	22,442
SD	307	14	4,156	6,926	3,691	923	16,518
SC	381	38	5,145	6,260	6,031	1,194	19,524
SB	358	27	4,409	6,130	5,083	1,041	17,576
IR	387	10	5,721	8,400	3,437	954	19,408
MC	489	6	6,812	3,940	1,655	496	13,605
<i>UC Enrollees</i>							
UC	964	46	12,004	12,271	7,341	1,864	35,192
BK	79	4	740	1,829	997	242	4,066
DV	86	3	1,334	1,454	1,090	223	4,260
LA	179	12	1,364	1,415	970	250	4,283
RV	185	4	2,429	1,571	488	195	4,924
SD	68	5	1,118	1,712	668	209	3,862
SC	74	8	992	969	1,081	231	3,422
SB	89	9	1,176	990	1,265	249	3,854
IR	103	1	1,628	1,968	601	209	4,582
MC	101	0	1,223	379	181	56	1,955
% App of HS Grads	14%	6%	17%	45%	19%	46%	22%
% Adm of HS Grads	7%	3%	10%	35%	13%	32%	15%
% Enr of HS Grads	4%	2%	6%	22%	6%	17%	8%
% App of 'a-g' Grads	41%	18%	45%	65%	36%	91%	48%
% Adm of 'a-g' Grads	20%	10%	27%	51%	25%	63%	32%
% Enr of 'a-g' Grads	11%	6%	15%	32%	12%	34%	18%

Note: The unknown category is not displayed but included in the total counts.

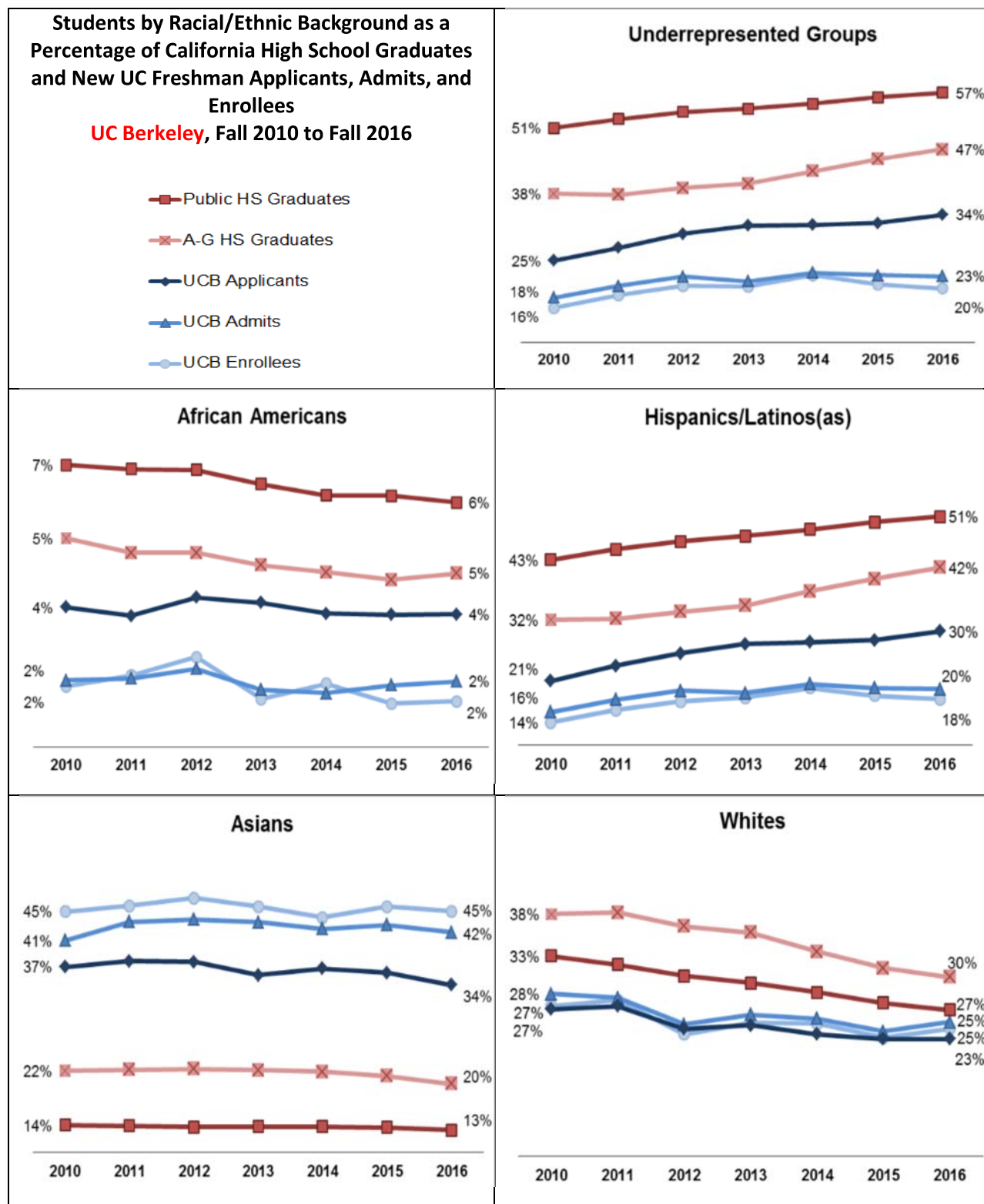
## Appendix B: Gap Charts, **Systemwide**

Ethnicities are based on IPEDS definitions. **Asians include pacific islanders.** Due to rounding, points of the same percentage numbers may not overlap. **The scales are different for each chart. Please interpret with caution.**



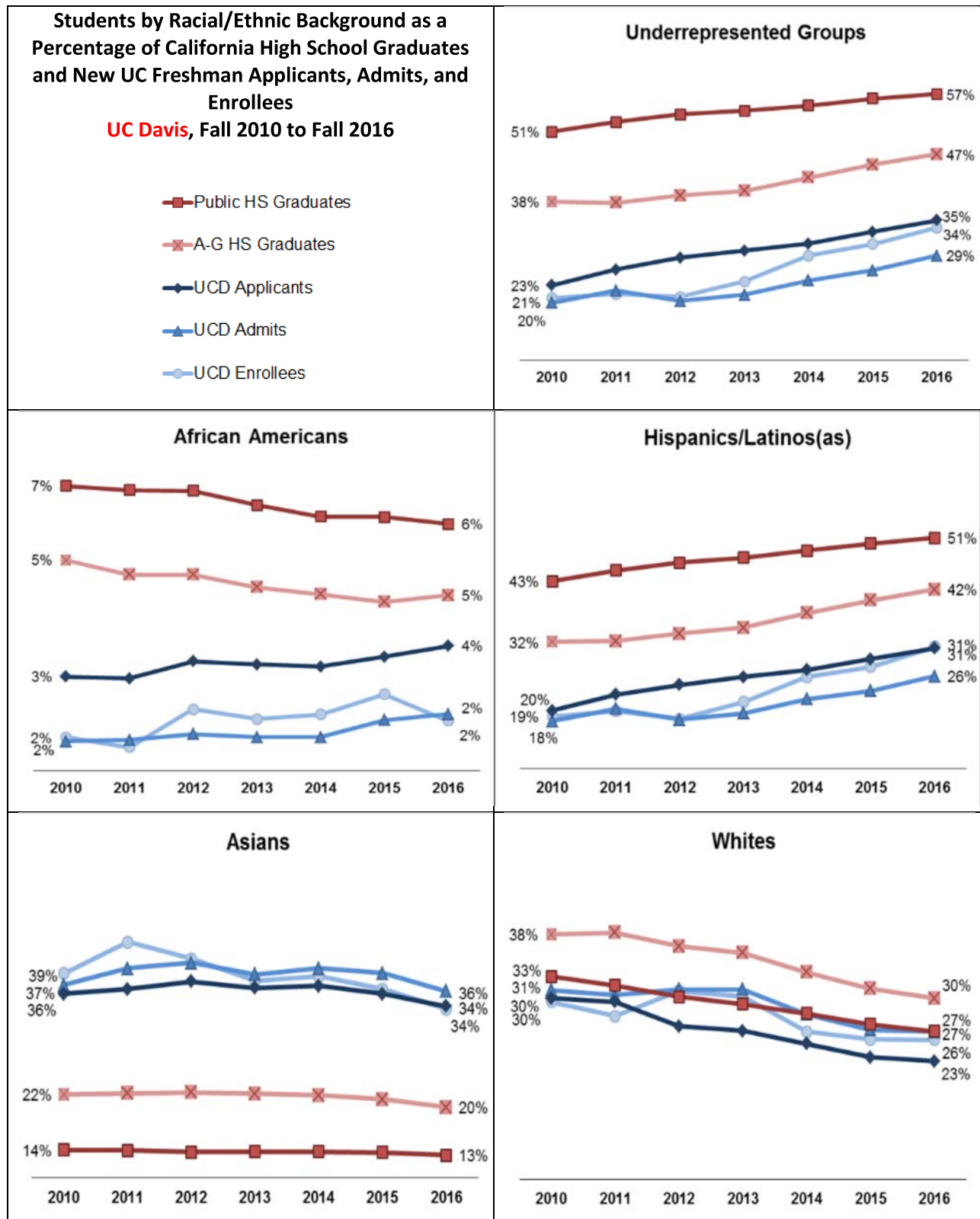


## Appendix B: Gap Charts, UC Berkeley

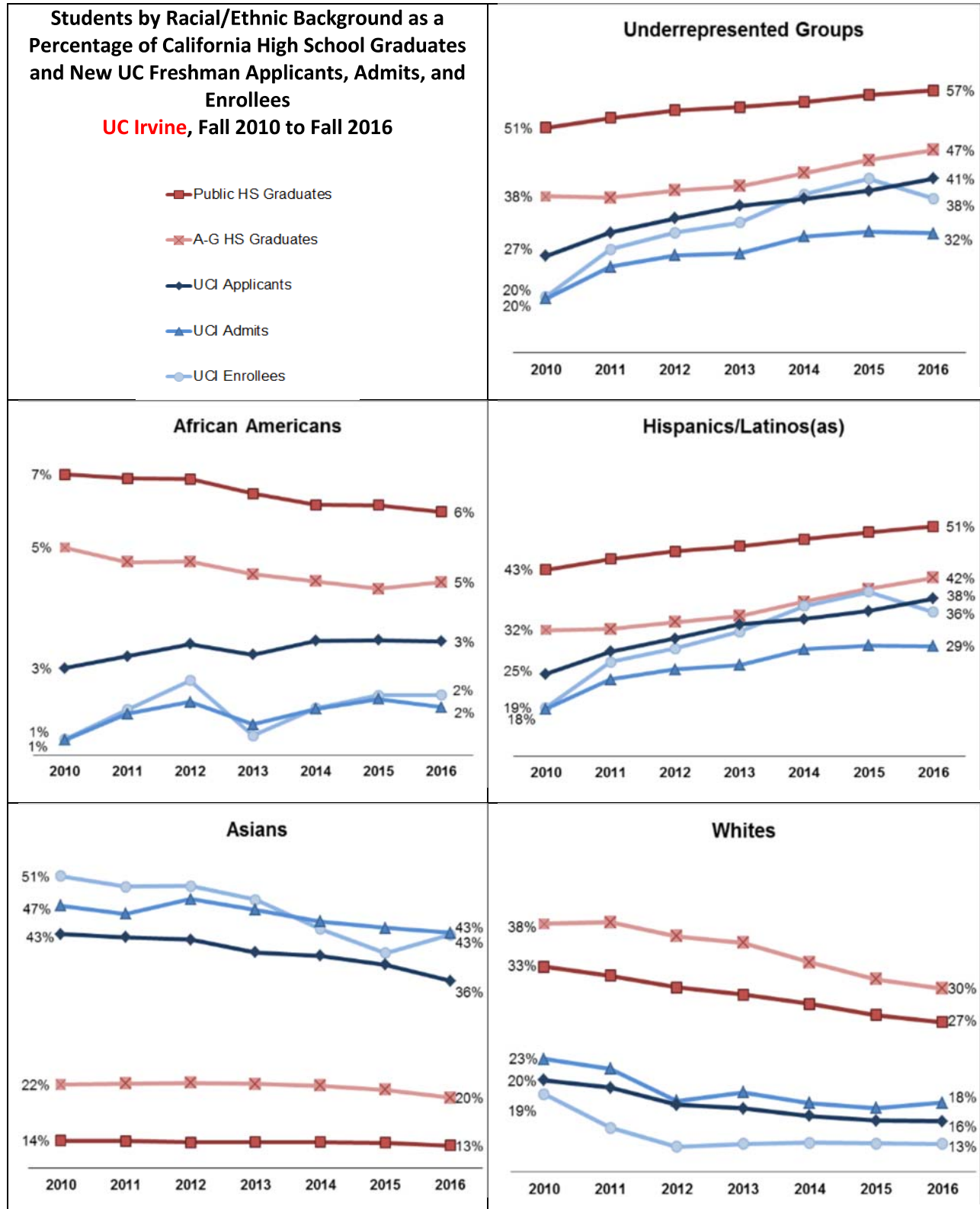




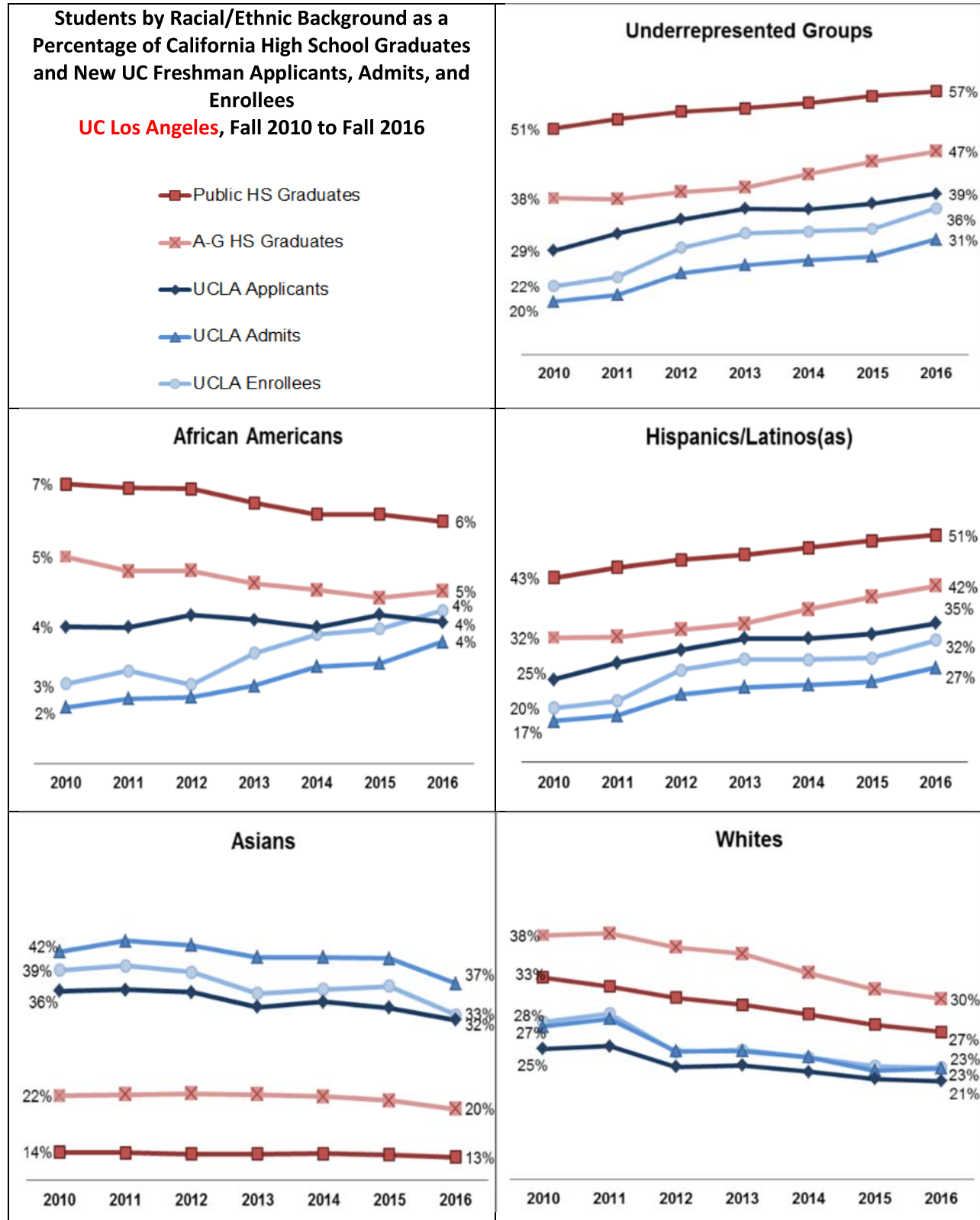
## Appendix B: Gap Charts, UC Davis



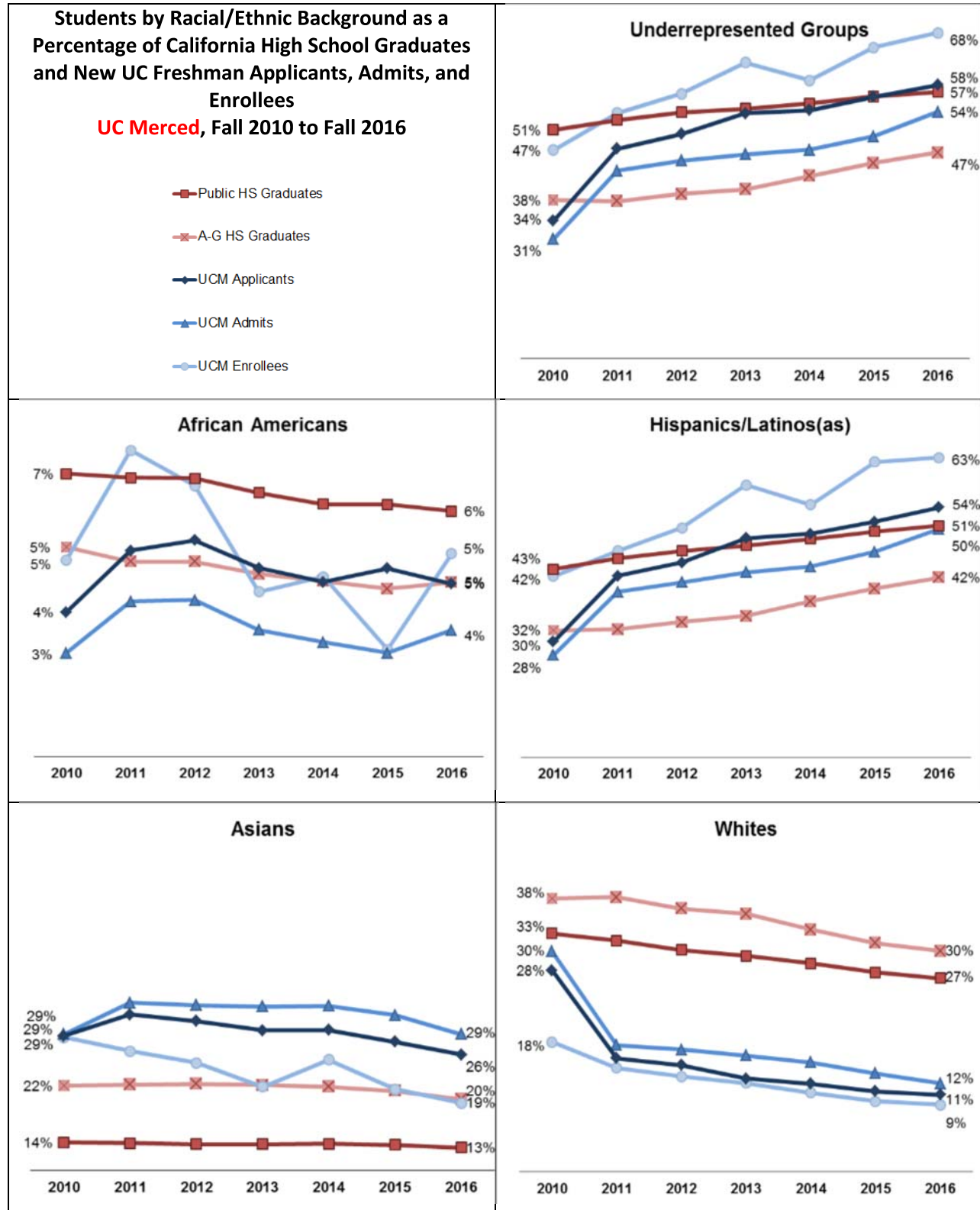
## Appendix B: Gap Charts, UC Irvine



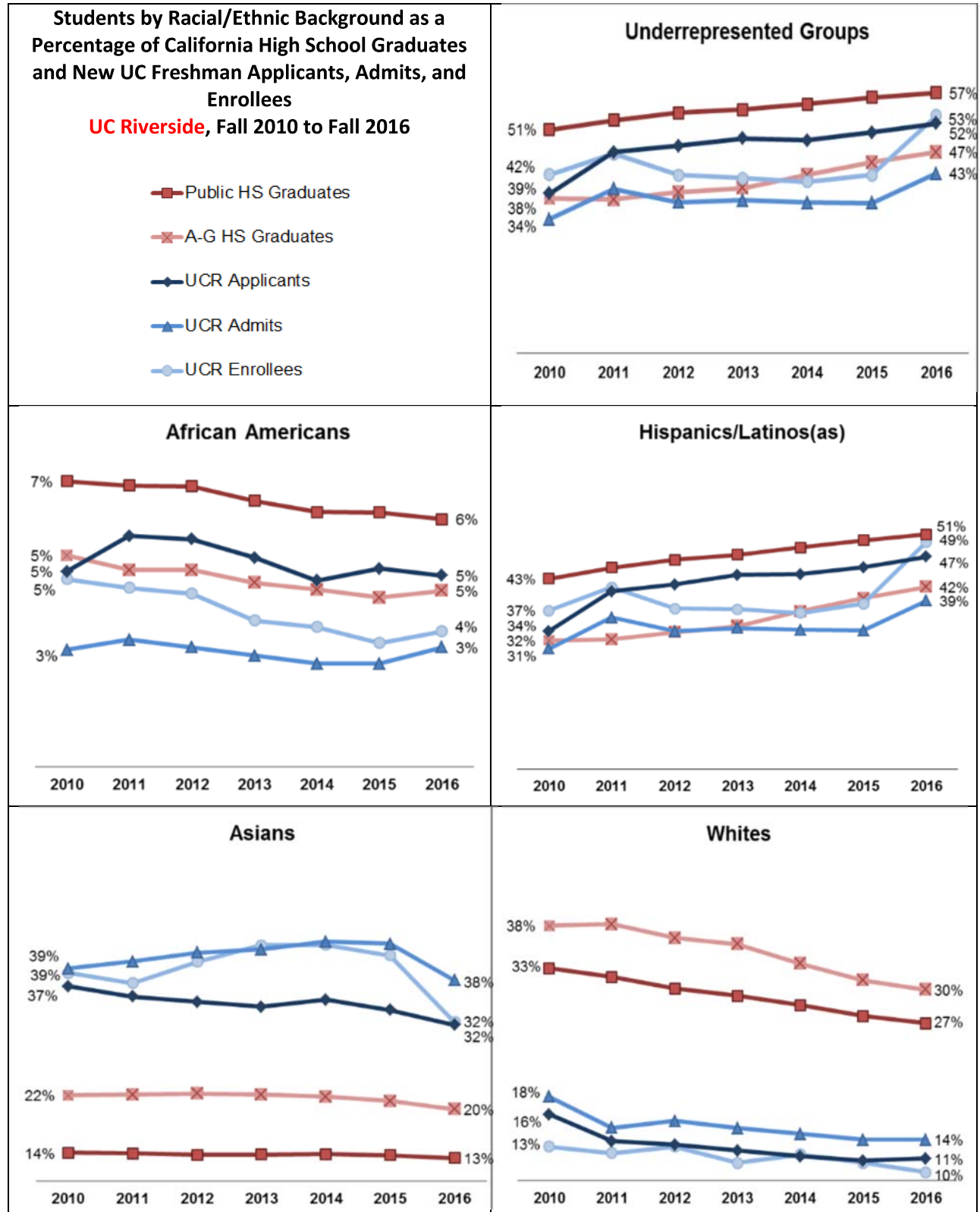
## Appendix B: Gap Charts, UCLA



## Appendix B: Gap Charts, UC Merced

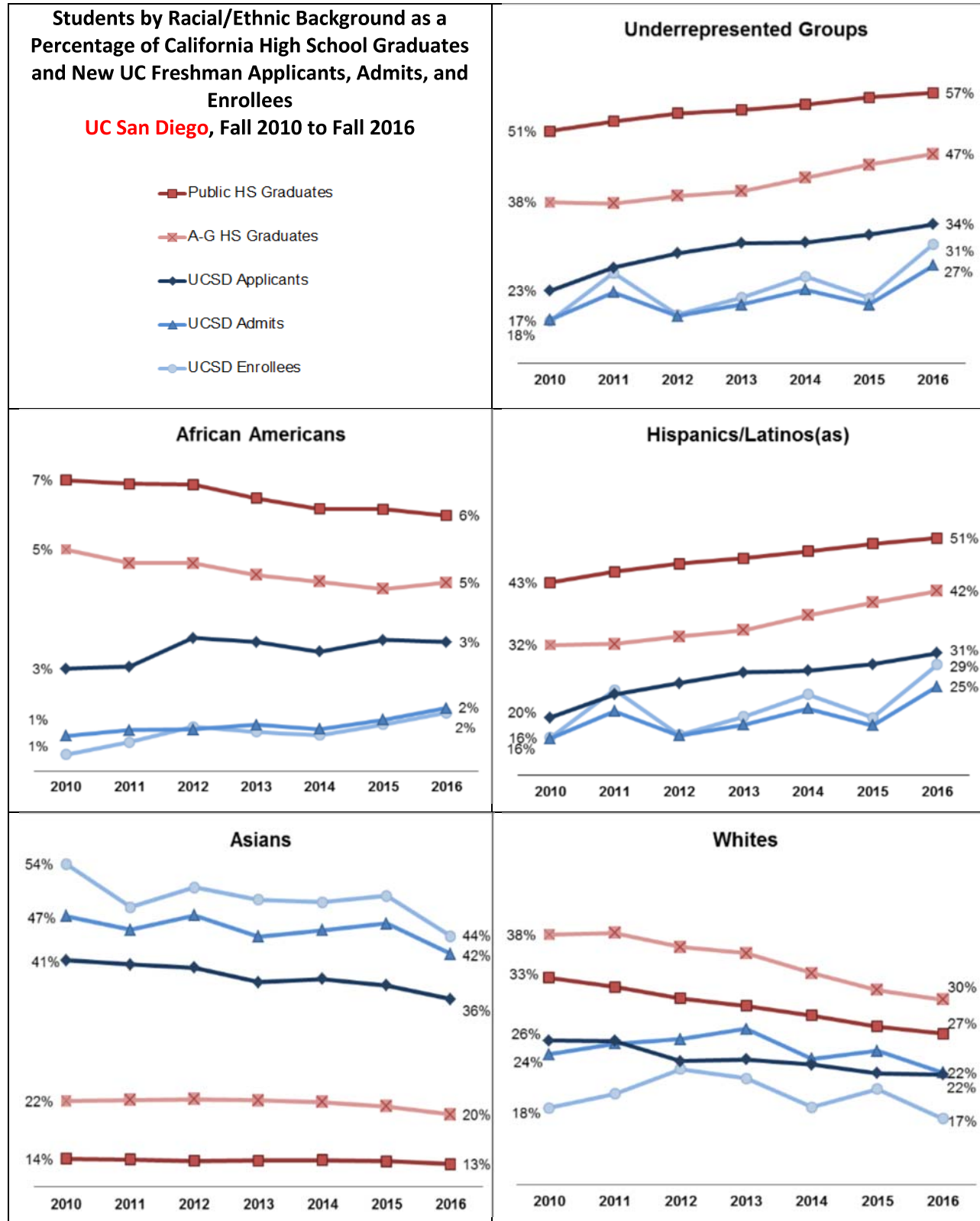


## Appendix B: Gap Charts, UC Riverside





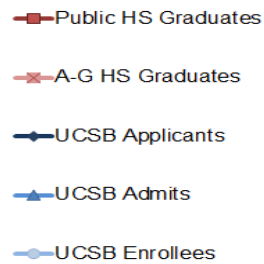
## Appendix B: Gap Charts, UC San Diego



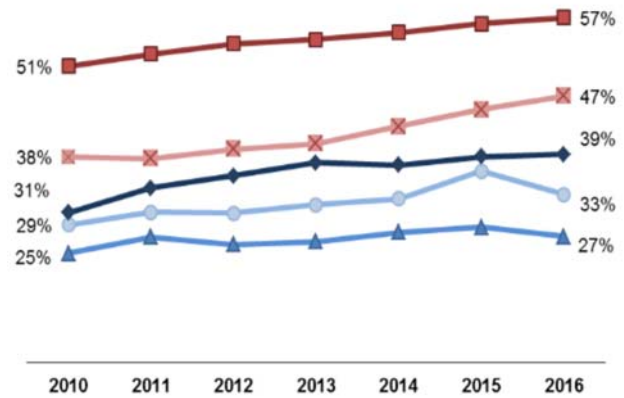
## Appendix B: Gap Charts, UC Santa Barbara

### Students by Racial/Ethnic Background as a Percentage of California High School Graduates and New UC Freshman Applicants, Admits, and Enrollees

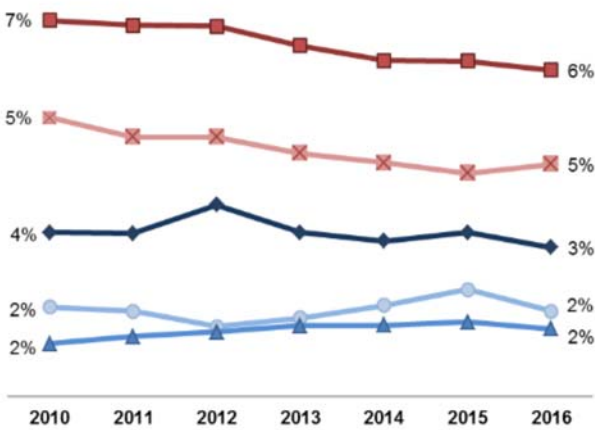
UC Santa Barbara, Fall 2010 to Fall 2016



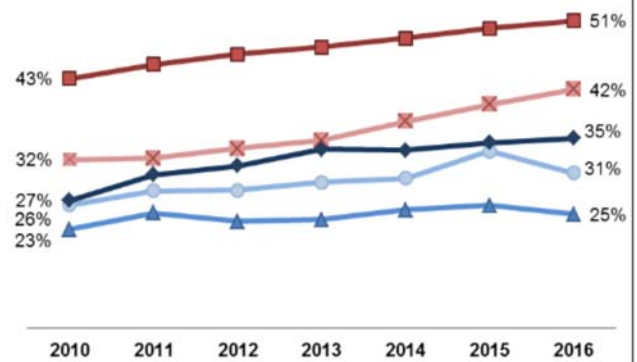
#### Underrepresented Groups



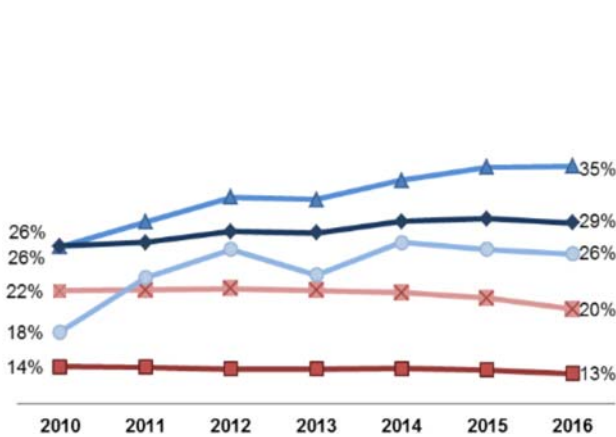
#### African Americans



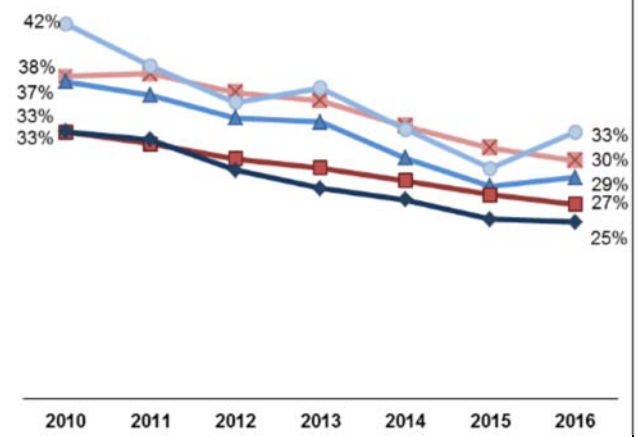
#### Hispanics/Latinos(as)



#### Asians



#### Whites





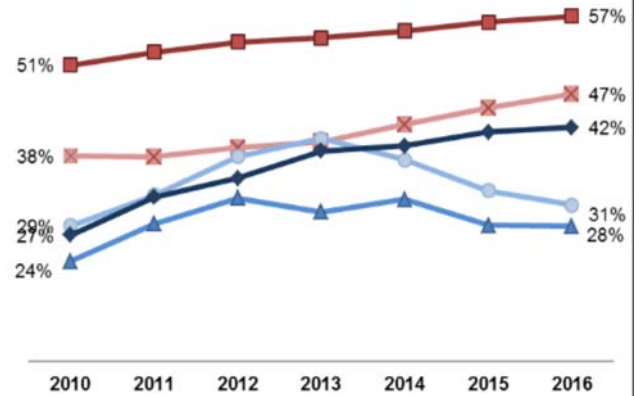
## Appendix B: Gap Charts, UC Santa Cruz

### Students by Racial/Ethnic Background as a Percentage of California High School Graduates and New UC Freshman Applicants, Admits, and Enrollees

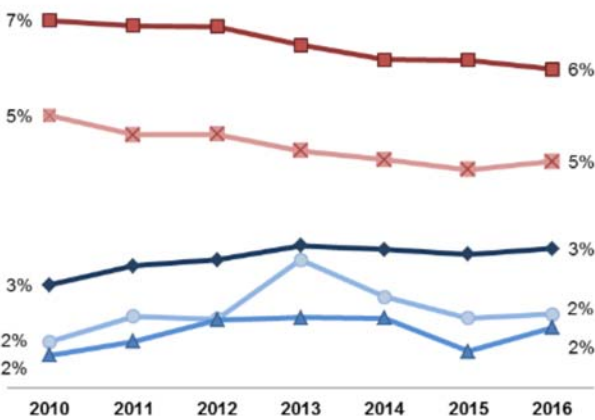
UC Santa Cruz, Fall 2010 to Fall 2016

- Public HS Graduates
- A-G HS Graduates
- UCSC Applicants
- UCSC Admits
- UCSC Enrollees

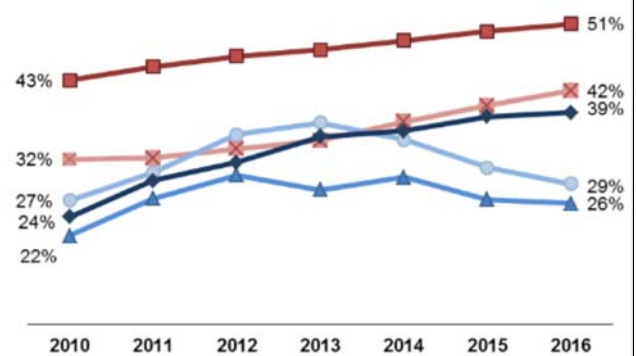
### Underrepresented Groups



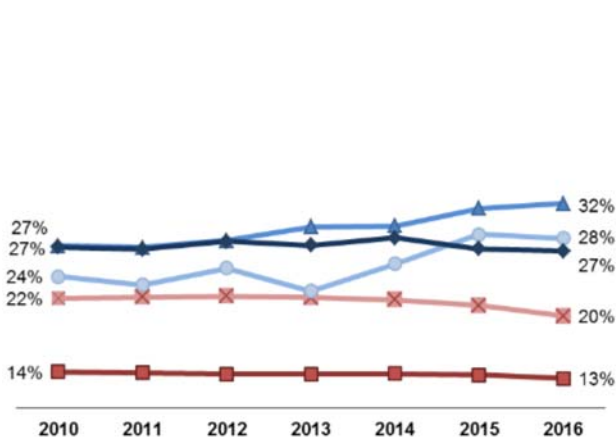
### African Americans



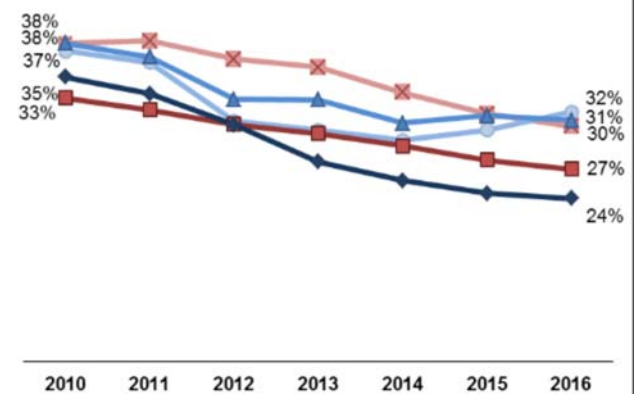
### Hispanics/Latinos(as)



### Asians



### Whites



## Appendix C: Racial/ethnic distribution (% share) of overall CA public high school pipeline to UC by Campus, fall 2016

Ethnicity definitions are IPEDS/US Census definitions. UC apps, admits, enrollees, and persisters are restricted to CA public high school graduates who took the SAT.

Figure 1. Systemwide

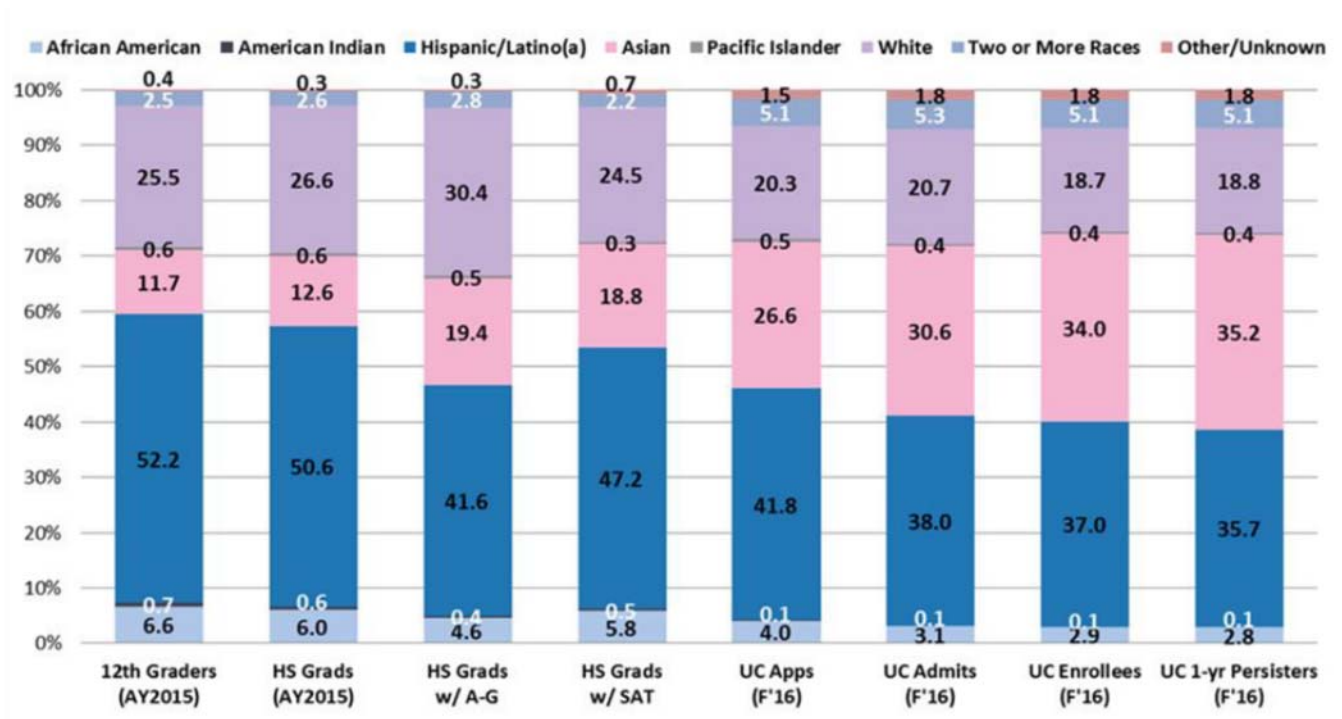


Figure 2. UC Berkeley

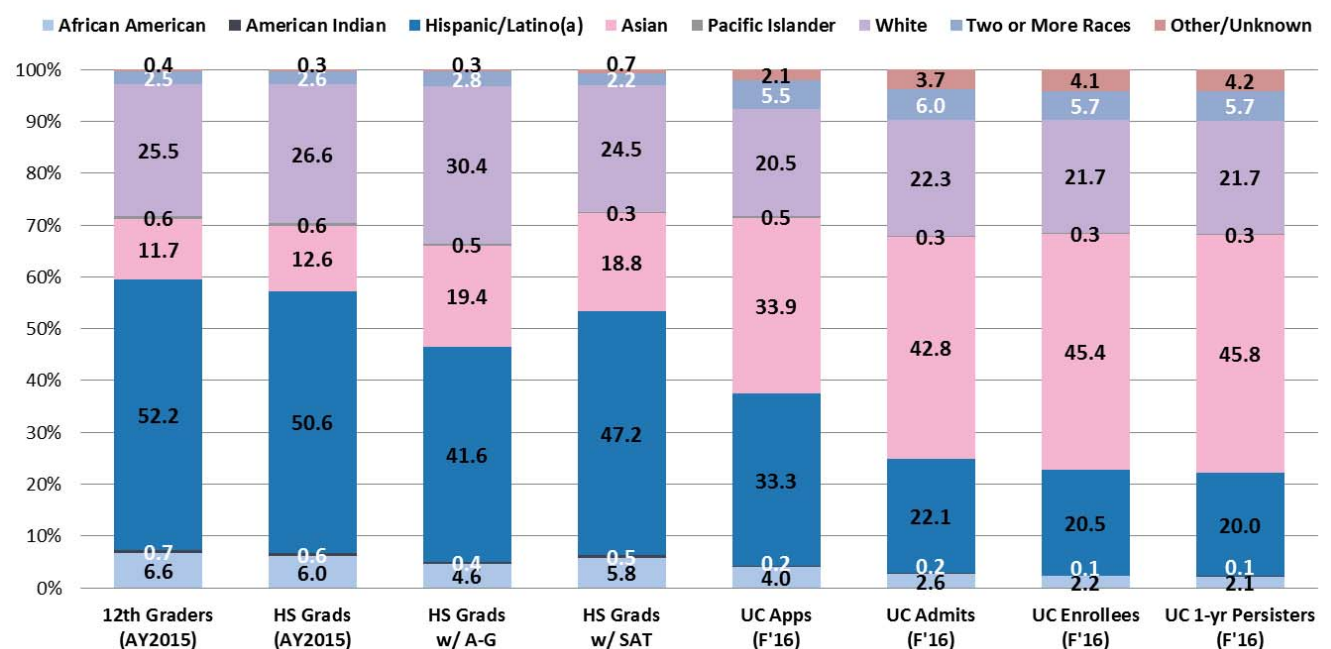


Figure 3. UC Davis

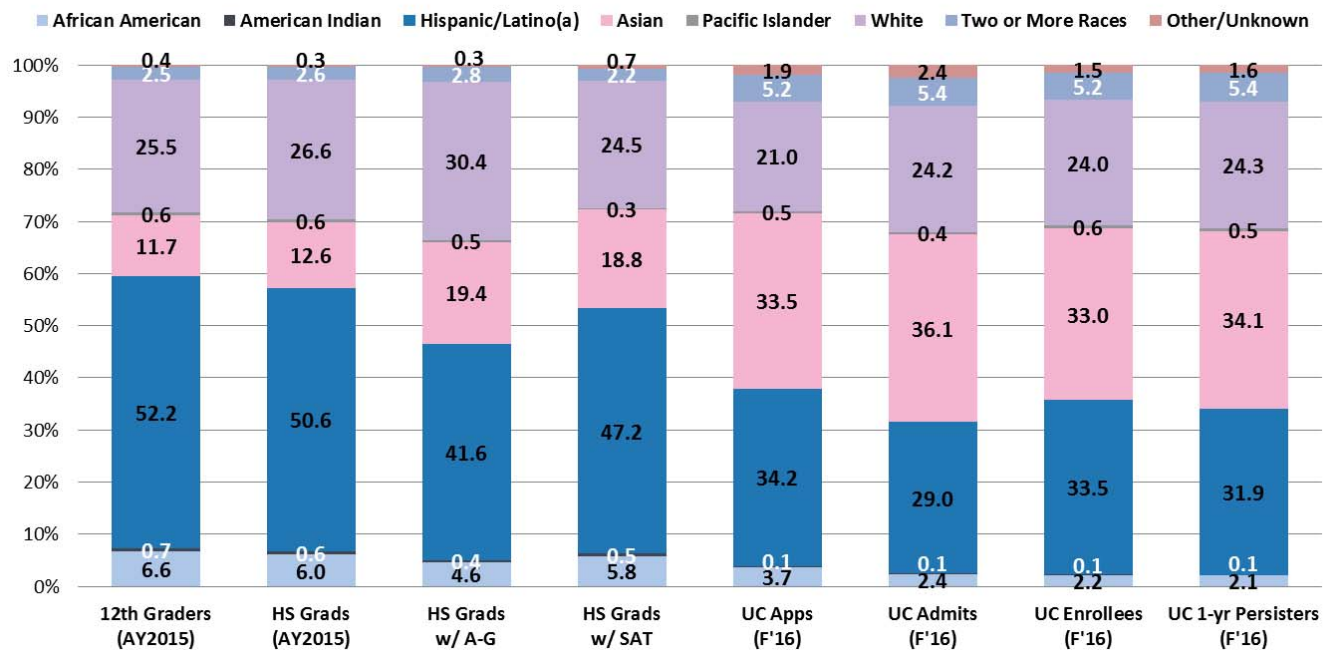


Figure 4. UC Irvine

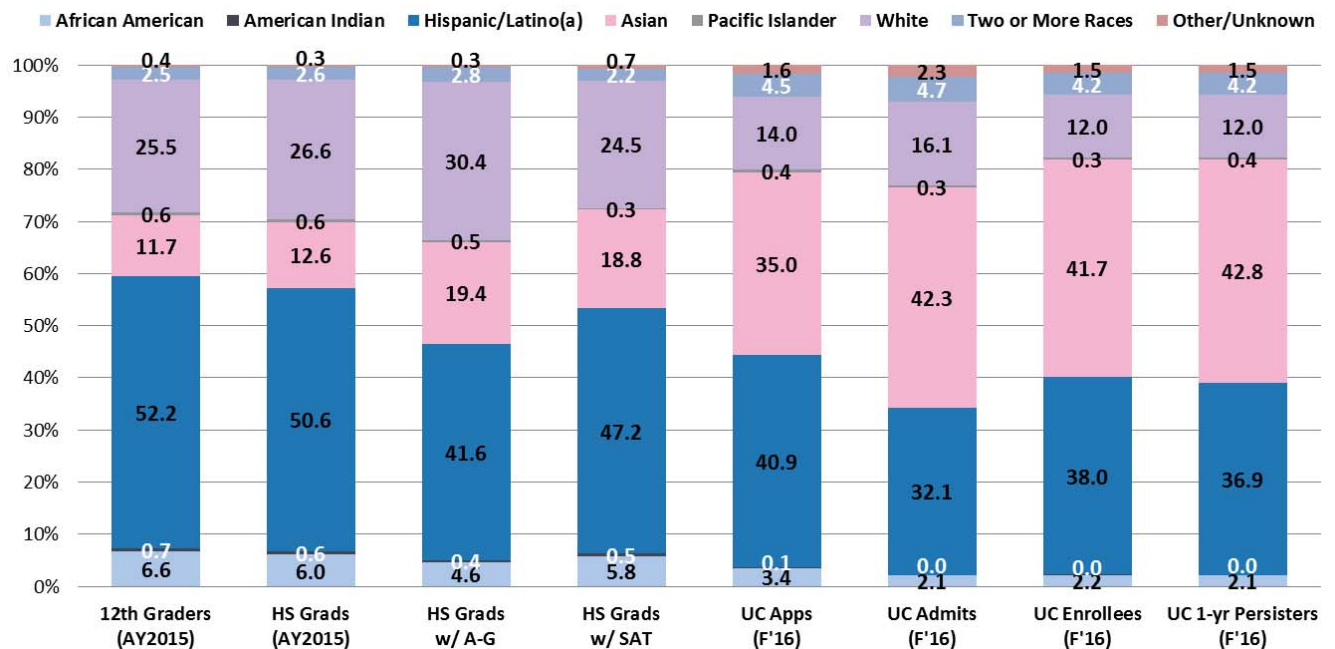


Figure 5. UCLA

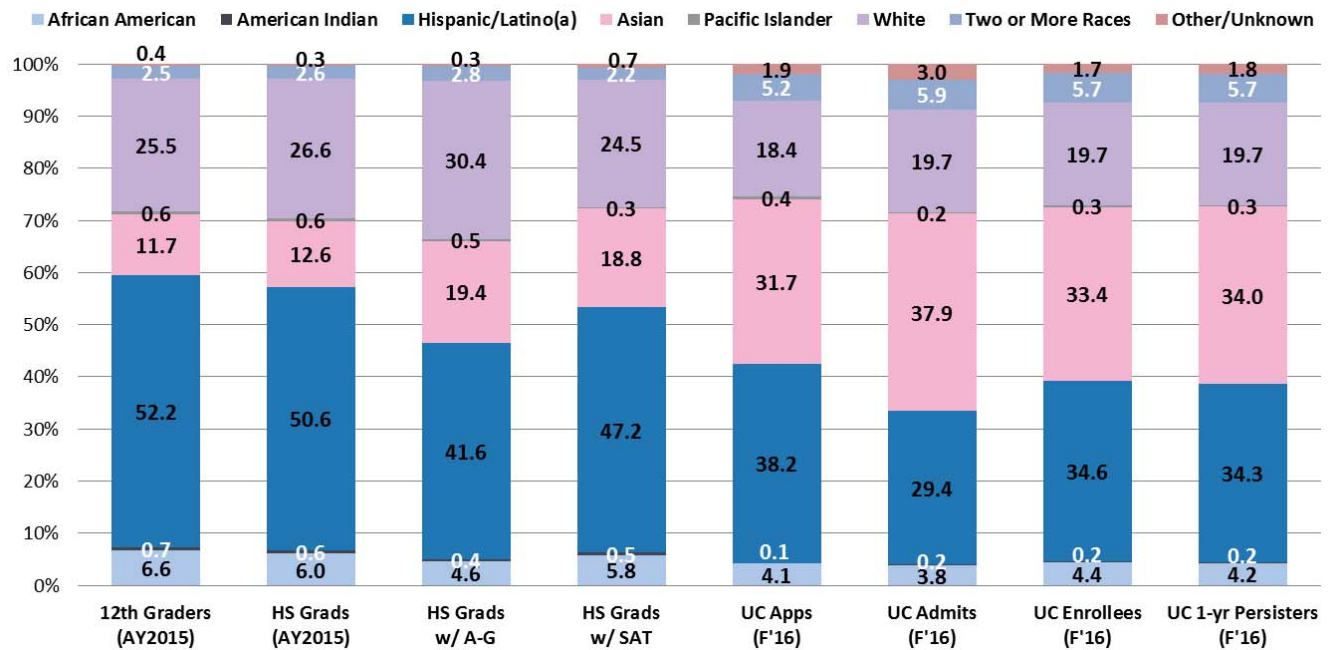


Figure 6. UC Merced

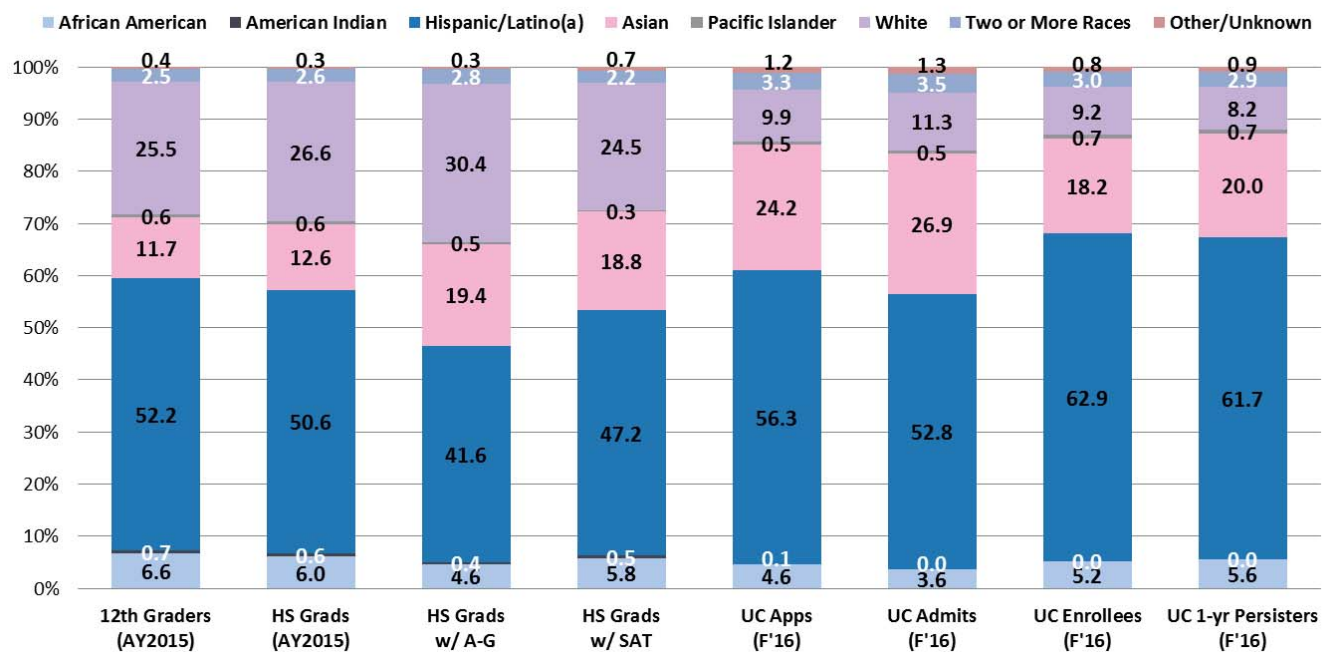


Figure 7. UC Riverside

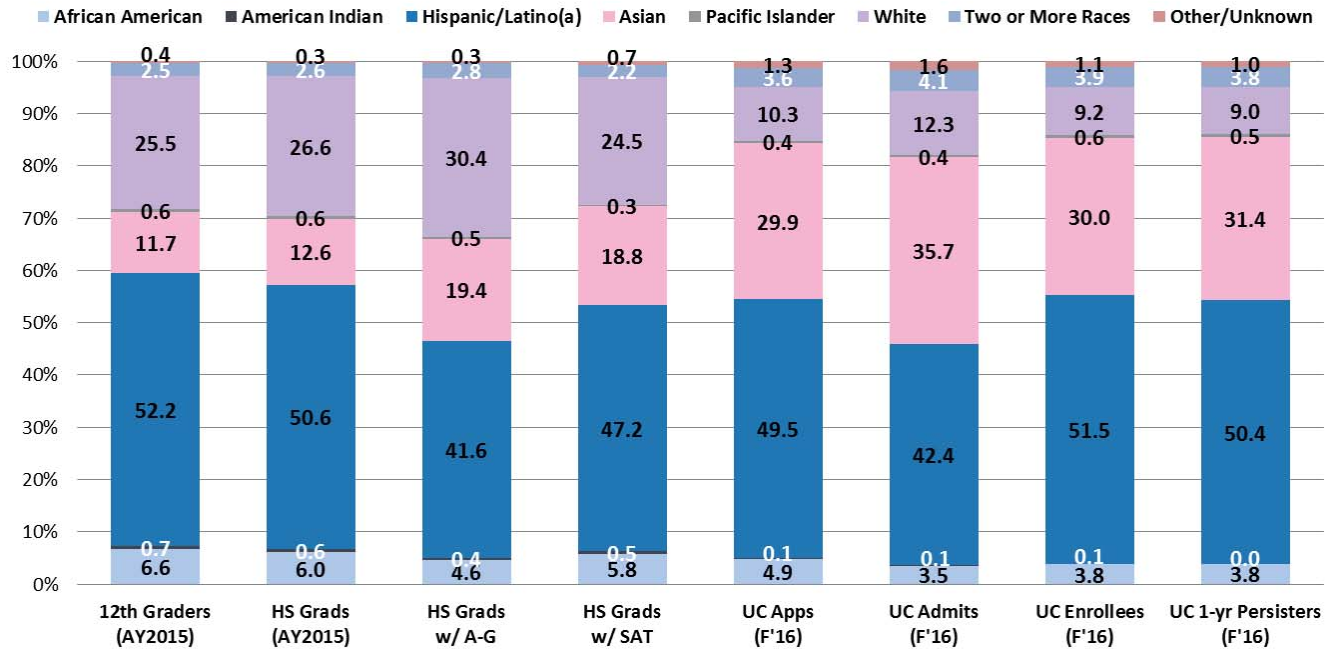


Figure 8. UC San Diego

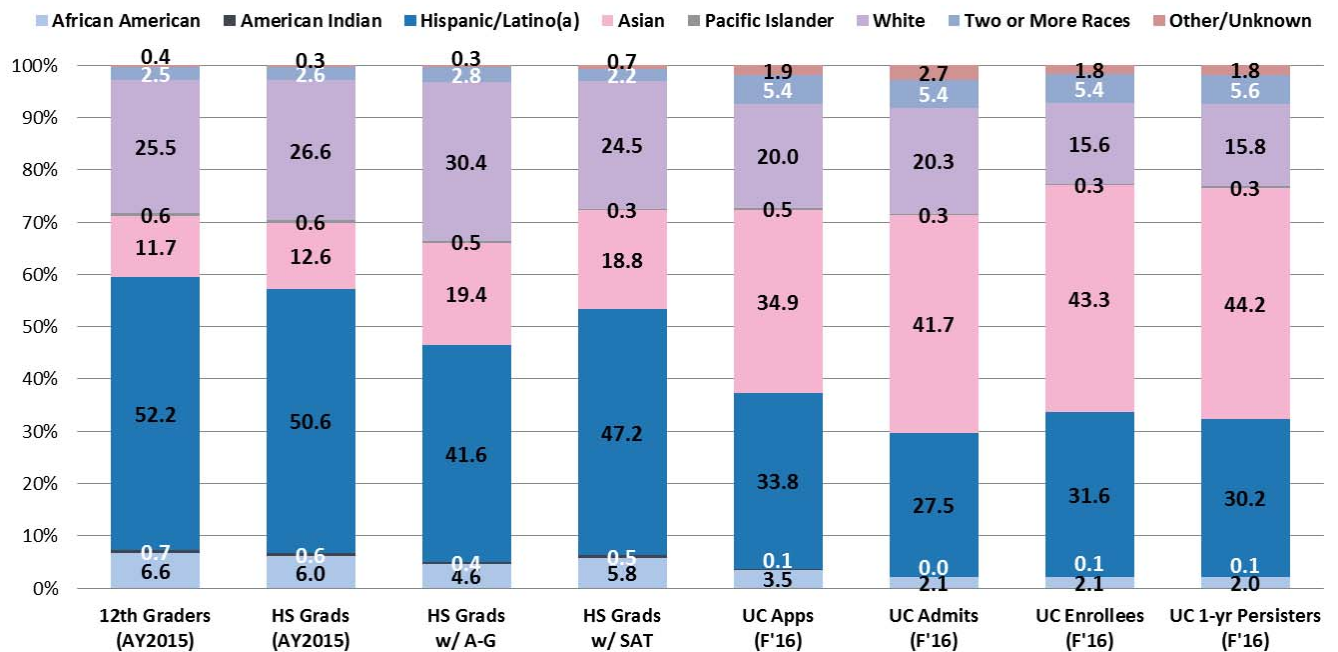




Figure 9. UC Santa Barbara

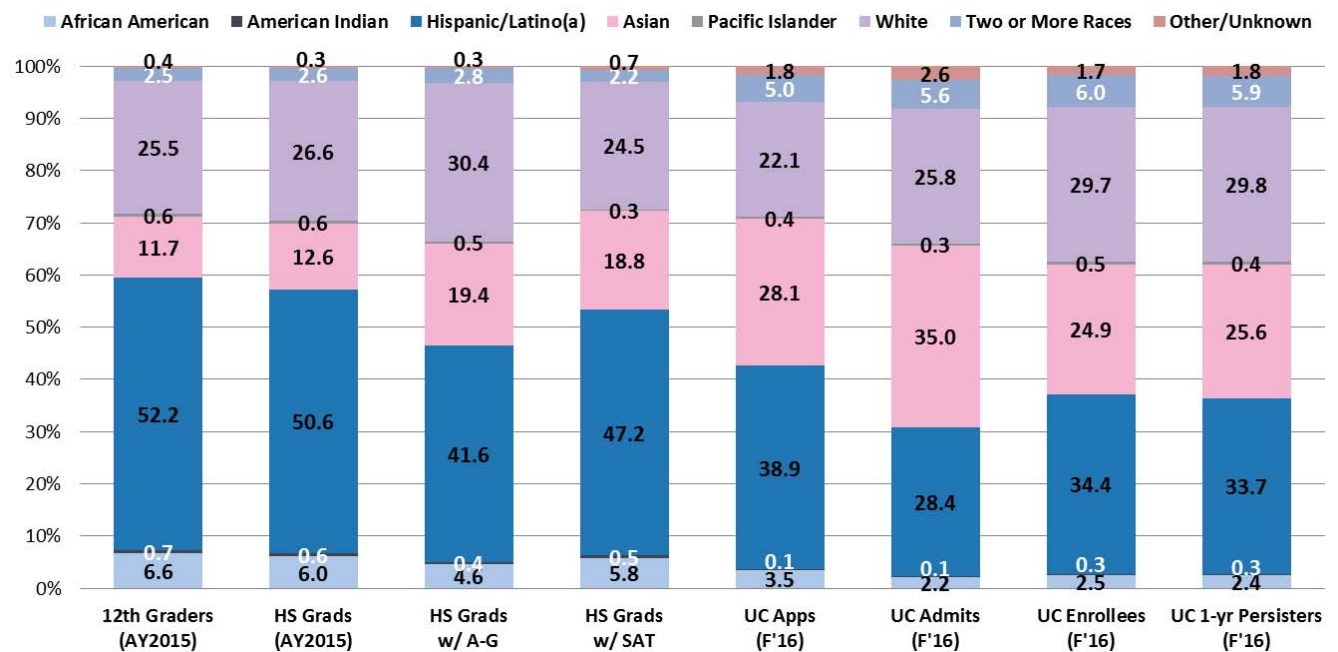


Figure 10. UC Santa Cruz



## Appendix D: Racial/ethnic distribution (% share) of overall CA public high school pipeline to UC by Region, fall 2016

**Central Coast** includes Monterey, San Benito, San Luis Obispo, Santa Barbara, Santa Cruz and Ventura counties. **Central Valley** includes Alpine, Amador, Calaveras, Fresno, Inyo, Kern, Kings, Madera, Mariposa, Merced, Mono, San Joaquin, Stanislaus, Tulare, and Tuolumne counties. **Northern CA** includes Butte, Colusa, Del Norte, El Dorado, Glenn, Humboldt, Lake, Lassen, Mendocino, Modoc, Nevada, Placer, Plumas, Sacramento, Shasta, Sierra, Siskiyou, Sutter, Tehama, Trinity, Yolo and Yuba counties. **San Francisco Bay Area** includes Alameda, Contra Costa, Marin, Napa, San Francisco, San Mateo, Santa Clara, Solano, and Sonoma counties. **Los Angeles** includes Los Angeles county only. **Southern CA** includes Imperial, Orange, Riverside, San Bernardino, and San Diego counties.

Figure 1. Central Coast

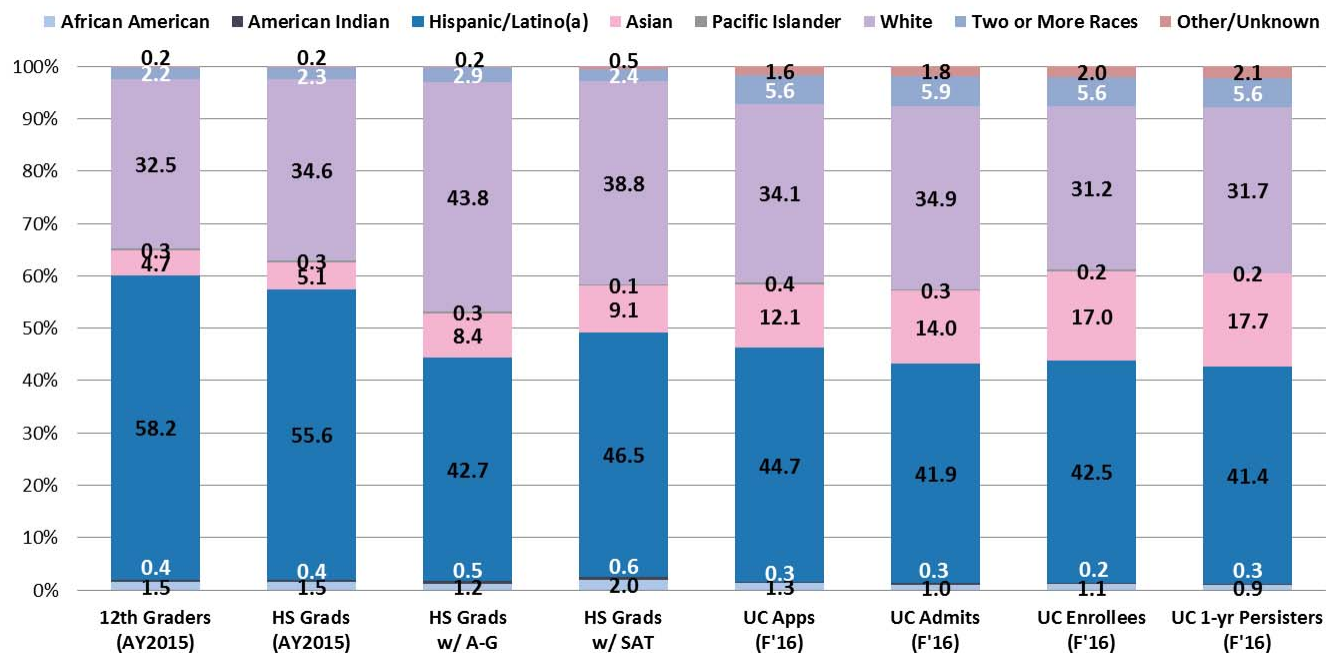




Figure 2. Central Valley

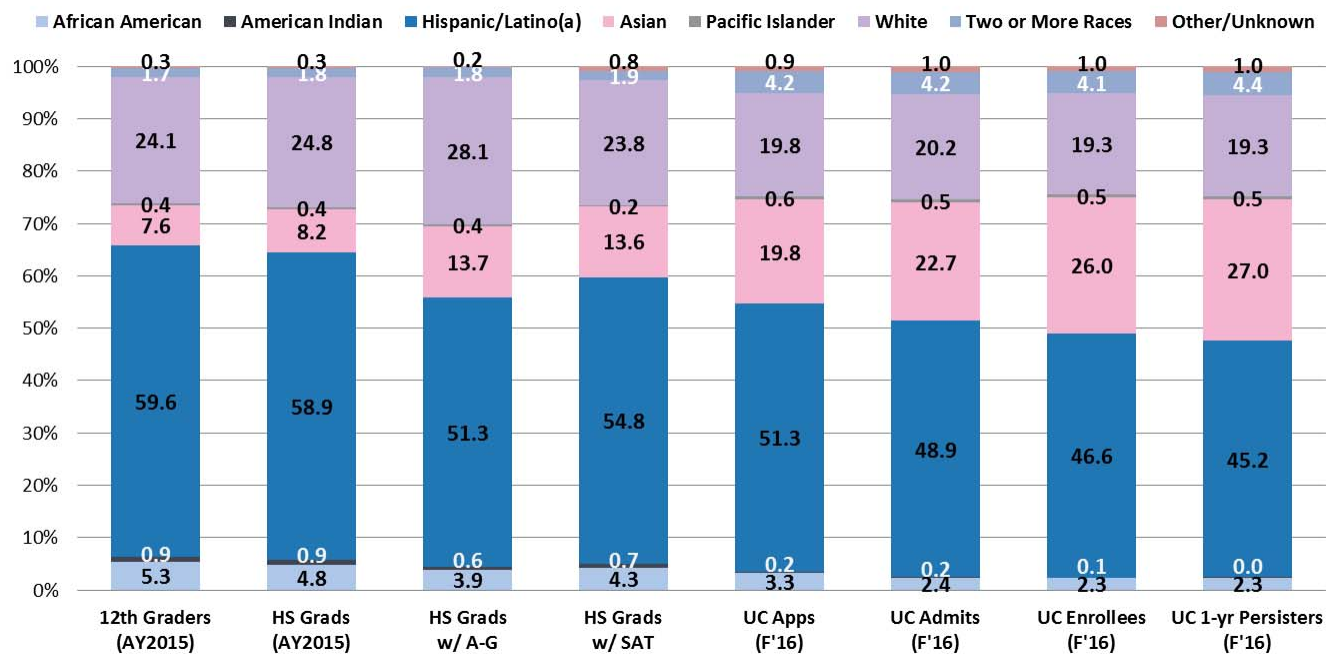


Figure 3. Los Angeles

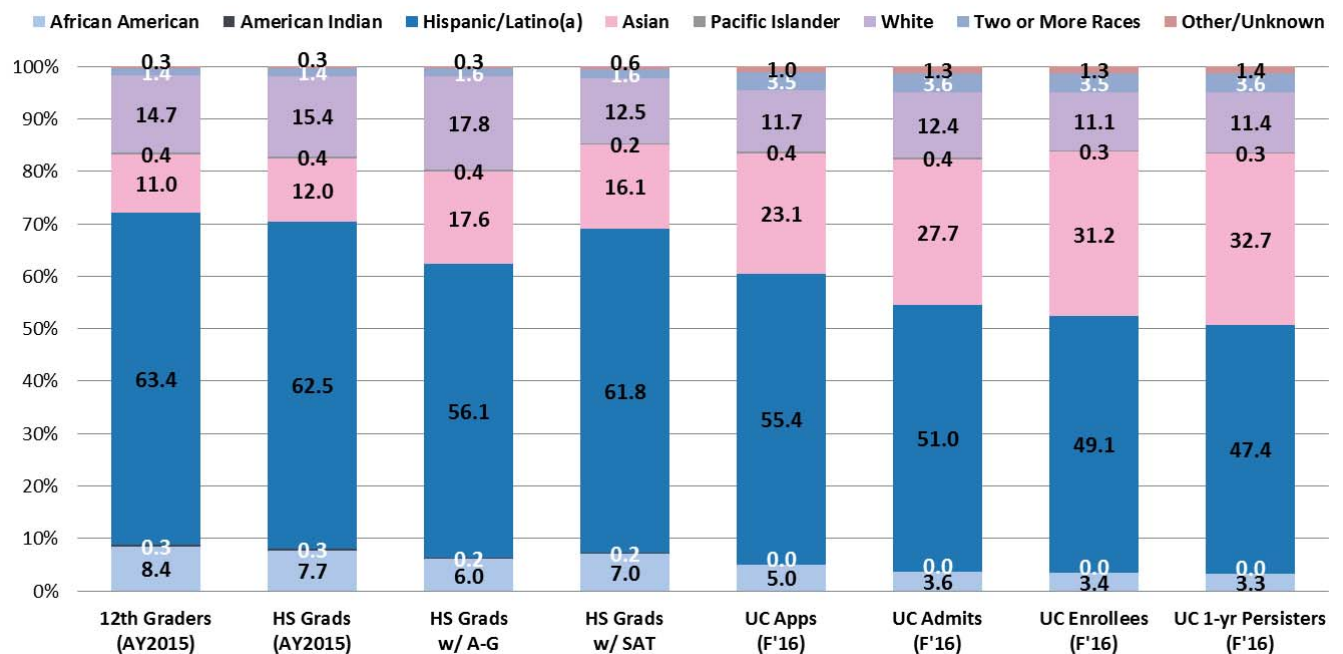


Figure 4. Northern California

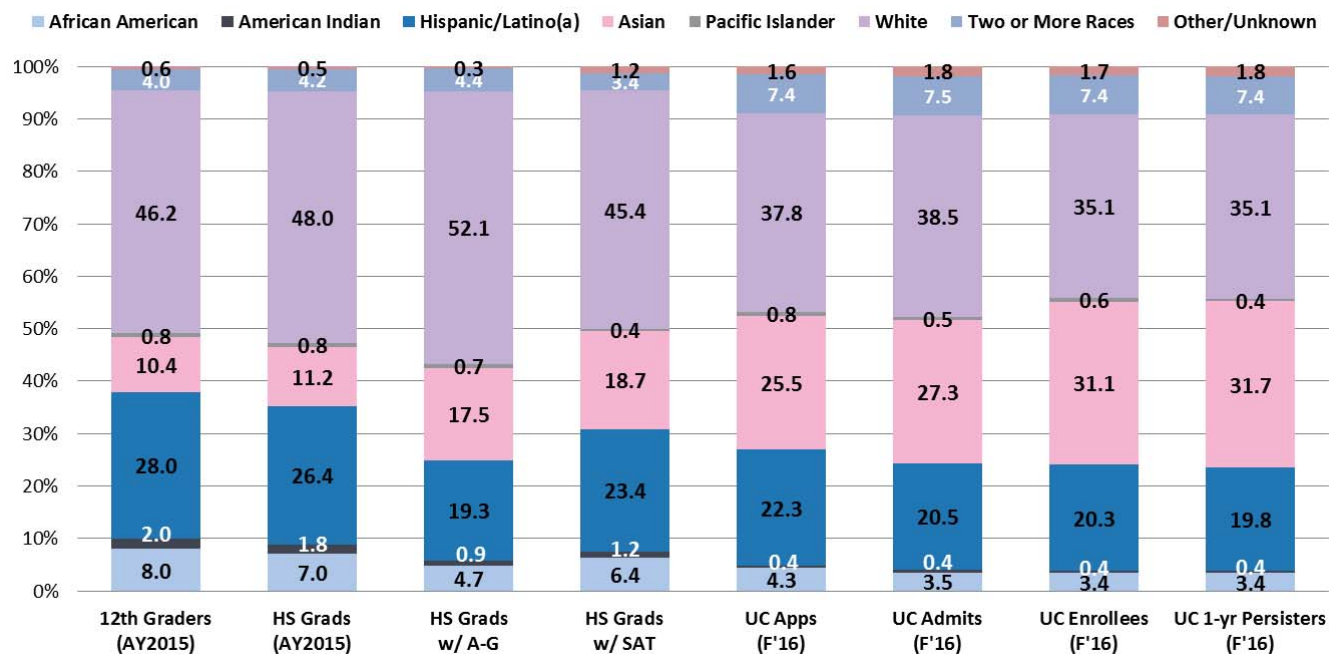


Figure 5. San Francisco Bay Area

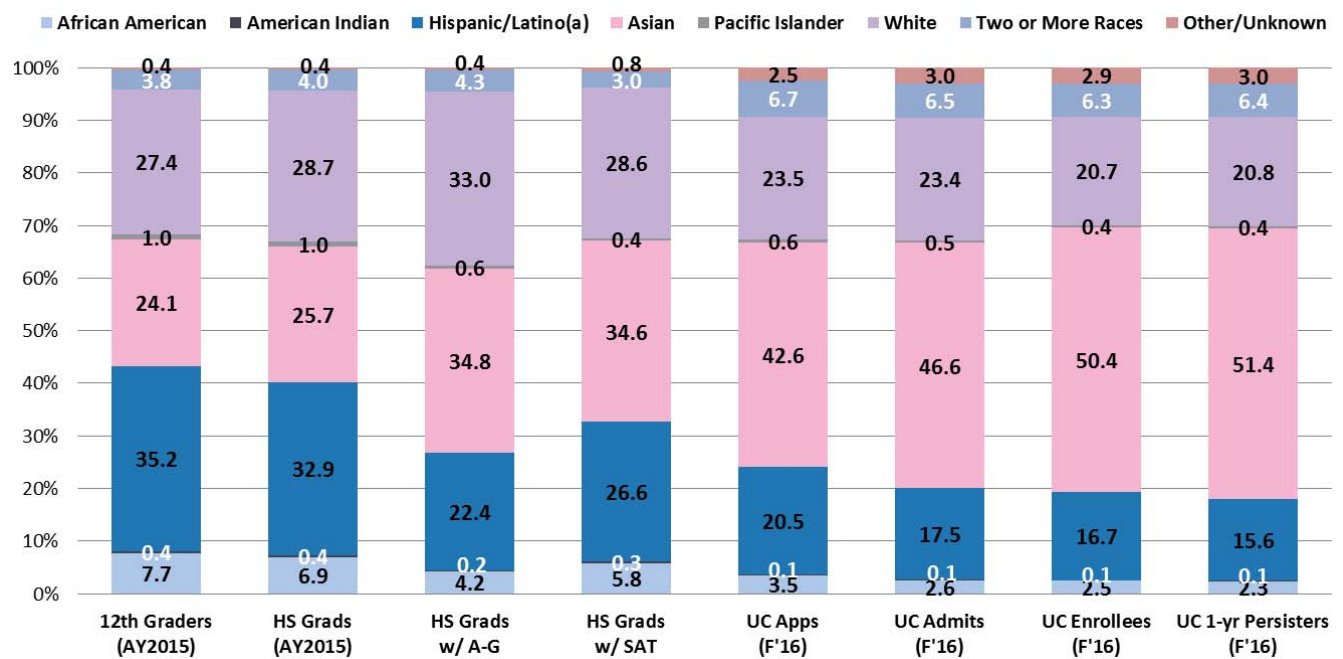


Figure 6. Southern California

