

**Release 1862**

**Service Request 82205  
Time Reporting Service**

**Test Plan**

May 26, 2009

Payroll/Personnel Services, ATS, IR&C  
Office of the President  
University of California

**TABLE OF CONTENTS**

**Testing Overview .....2**

**Database Loads .....3**

**LOADCTL: Control Table (CTL) Initial Load.....3**

**LOADEDDB: Employee Data Base (EDB) Load .....3**

**LOADTHF: Transaction Holding File Data Base (THF) Load .....3**

**Web Service Testing .....4**

## Testing Overview

This test plan addresses the test runs and cases constructed to verify the correct installation of Release 1862.

The test is made up of the following components:

- Control Table Data Base (CTL) Initial Load (LOADCTL)
- Employee Data Base (EDB) Initial Load (LOADEDDB)
- Transaction Holding File (THF) Initial Load (LOADTHF)
- Web service testing

## **Database Loads**

### **LOADCTL: Control Table (CTL) Initial Load**

#### **Description**

This job loads the DB2 CTL database.

#### **Verification**

Verify that the job has completed normally. Verify that all tables have been successfully loaded into the data base.

### **LOADEDDB: Employee Data Base (EDB) Load**

#### **Description**

This job loads the EDB database as of December 2008 Month End.

#### **Verification**

Verify that the job has completed normally. Verify that all tables have been successfully loaded into the data base.

### **LOADTHF: Transaction Holding File Data Base (THF) Load**

#### **Description**

This job loads the THF database as of December 2008 Month End.

#### **Verification**

Verify that the job has completed normally. Verify that all tables have been successfully loaded into the data base.

## Web Service Testing

Note: These instructions use RAD Web Services Explorer, but any web service test tool may be used.

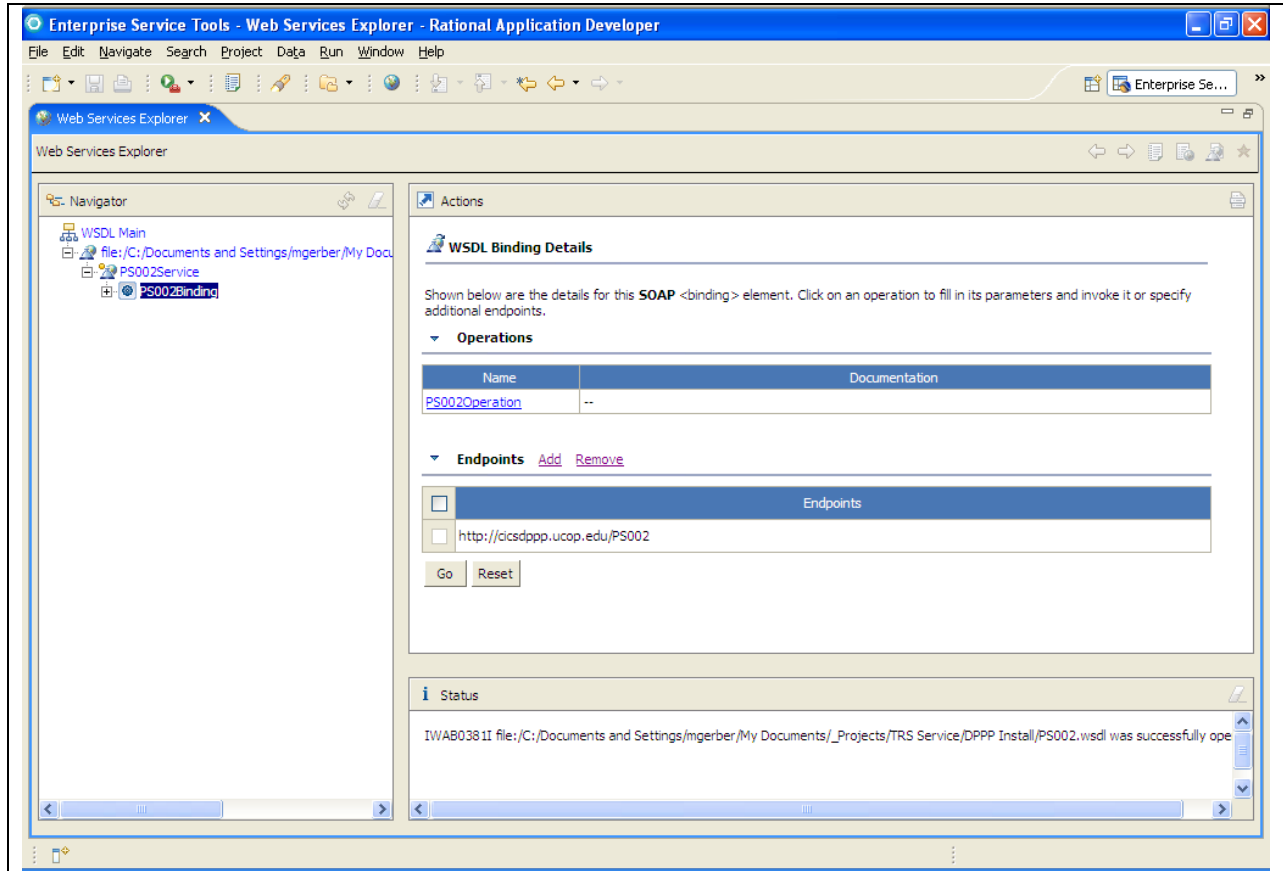
### Description

1. Examine data in CICS prior to testing the web service
  - o From the main menu, enter IDTC
  - o On the IDTC screen, enter "S" next to Roster, enter 804918 next to "home department" and "S" next to the MO 01/31/09 pay cycle.
  - o The third item on the roster page should look like this:

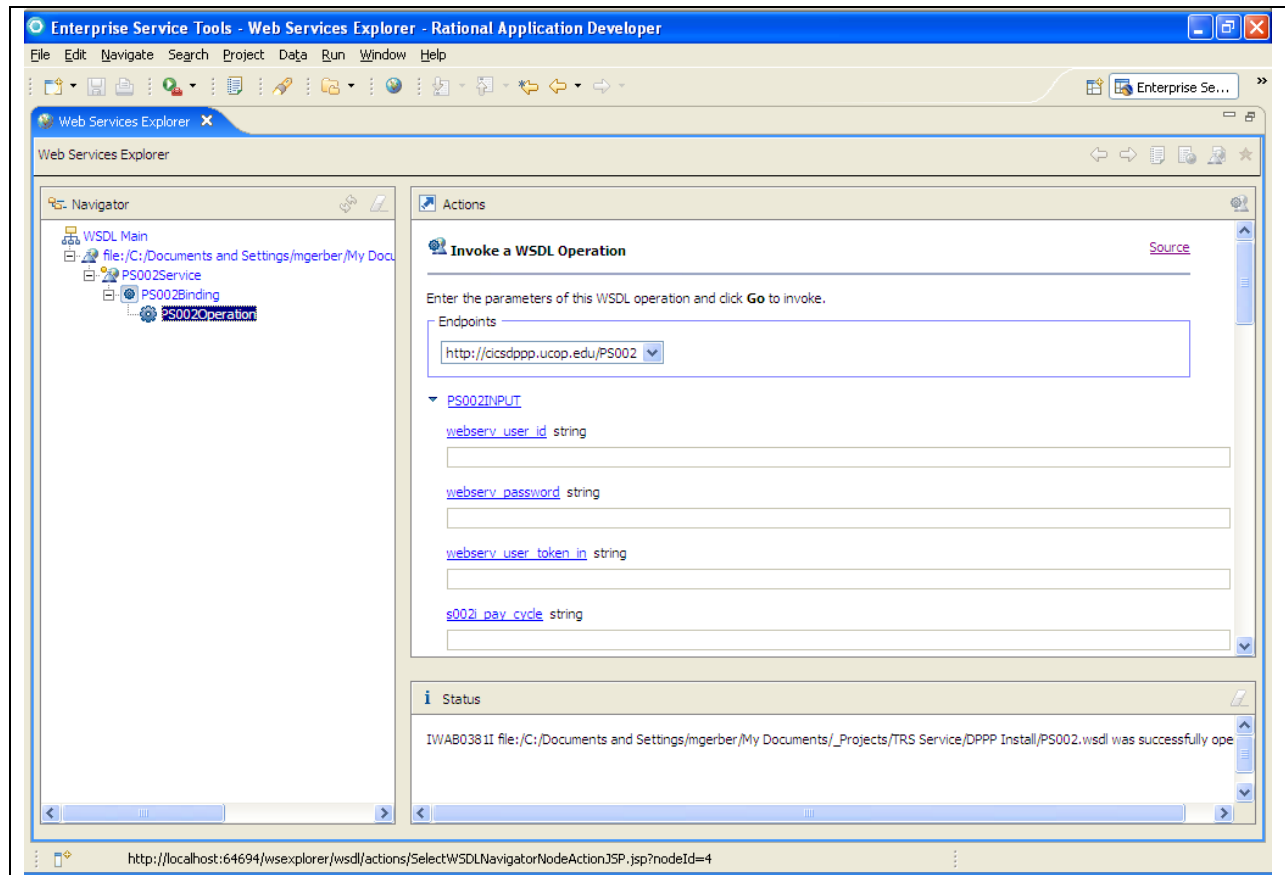
OK?	Emp.Name	Emp.ID	Dst	TC	Loc/Acct/CC/Fund/PC/Sub	Rt/Amt	A/H	WSP
	ATTRICK,JE	000050004	11	0145	3 404918	19900	1 16325.00	A
	Reg. Time (EXCEPTION) DOS: REG Total Time: 1.0000 H/%: % Prorate:							
	Overtime/Leave Time		DOS:	Time (Hrs):		DOS:	Time (Hrs):	
			DOS:	Time (Hrs):		DOS:	Time (Hrs):	

2. Import the wsdl in RAD
  - a) In RAD, switch to the J2EE Perspective and Project Explorer view.
    - o Window -> Open Perspective -> J2EE
    - o Window -> Show View -> Project Explore
  - b) In the project explorer frame, right click in the blank area and select New -> Project -> Dynamic web project
  - c) Name the project TRStest, select "<none>" for target runtime, and uncheck the box labelled "Add project to EAR". Then click Finish
  - d) Expand the project, right-click on "Web Content" and select "Import".
  - e) Under "General" select "File System" and click "Next"
  - f) Click Browse next to directory and navigate to the directory containing PS002.wsdl on your PC. Then in the right-hand window, select PS002.wsdl and click "Finish"

3. Invoke the Web Services Explorer
  - a) In the source folder of the new project, right-click on PS002.wsdl, select Web Services -> Test with Web Services Explorer. The resulting screen should be similar to the one below. Make sure that the endpoint is correct for your CICS region. Maximize the Web Services Explorer panel.



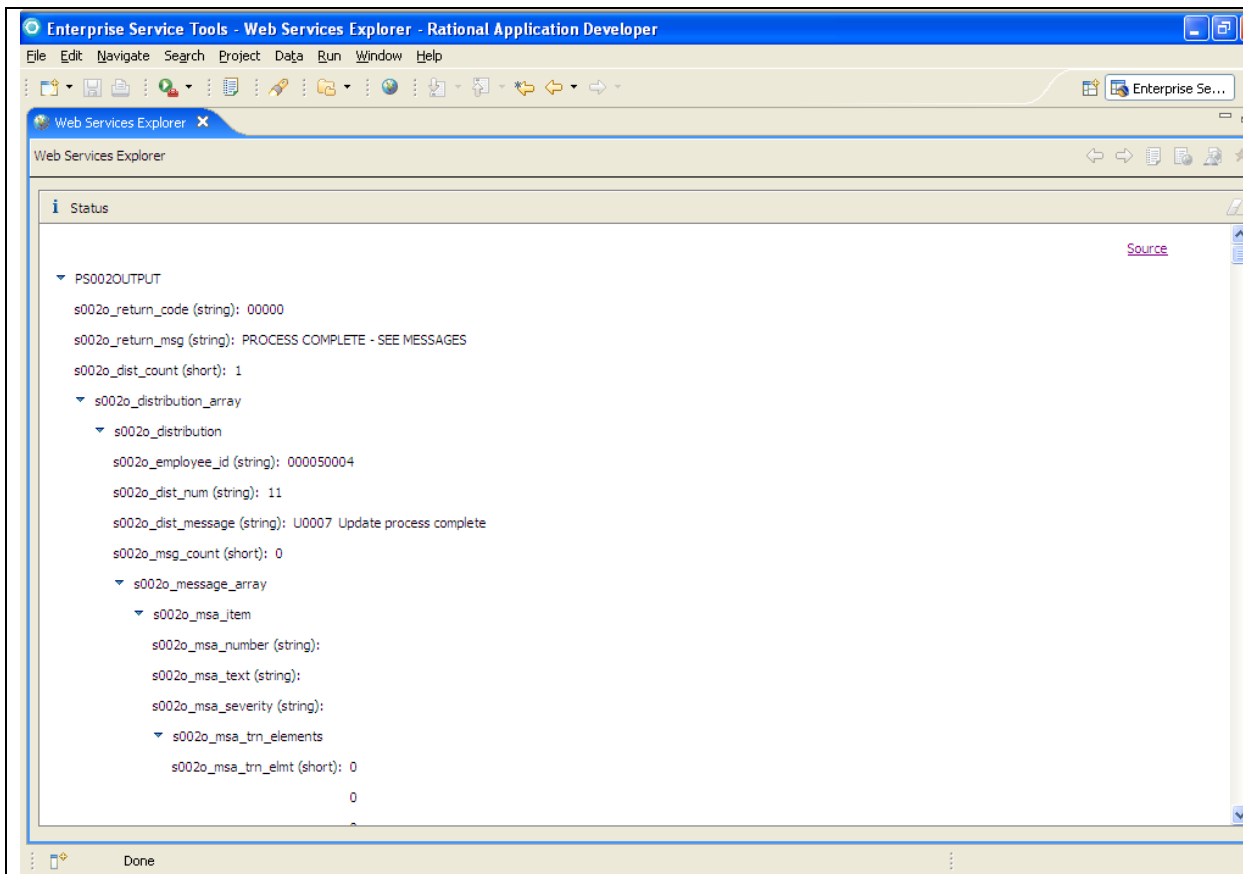
4. Click on the + next to PS002Binding, and then click on PS002Operation below that. The screen should look like the one below:



5. Enter the following data in the entry fields and then click the "Go" button. Fields not listed should be left blank.

Field Label	Data
webserv_user_id	Your user ID
webserv_password	Your password
webserv_user_token_in	9999
s002i_pay_cycle	MO
s002i_ppe_date	013109
s002i_employee_id	000050004
s002i_dist_num	11
s002i_bw_fisc_end	1
s002i_dos	REG
s002i_time	.8
s002i_dos	VAC
s002i_time	8.0

6. The following screen will be displayed with message U0007 indicating that update was successful.



Release 1862  
May 26, 2009

7. In CICS, repeat step 1, and confirm that the data has been changed as follows, ie. that the REG Time has changed to .8 and the VAC hours have been added.

OK?	Emp.Name	Emp.ID	Dst	TC	Loc/Acct/CC/Fund/PC/Sub	Rt/Amt	A/H	WSP
Y	ATTRICK,JE	000050004	11	0145	3 404918	19900	1 16325.00	A
Reg. Time (EXCEPTION)		DOS:	REG	Total Time:	0.8000	H/%:	Prorate:	
Overtime/Leave Time		DOS:	VAC	Time (Hrs):	008.00	DOS:	Time (Hrs):	
		DOS:		Time (Hrs):		DOS:	Time (Hrs):	