

- DRAFT -
Identity Management for the
University of California

David Walker, UCOP
David.Walker@ucop.edu

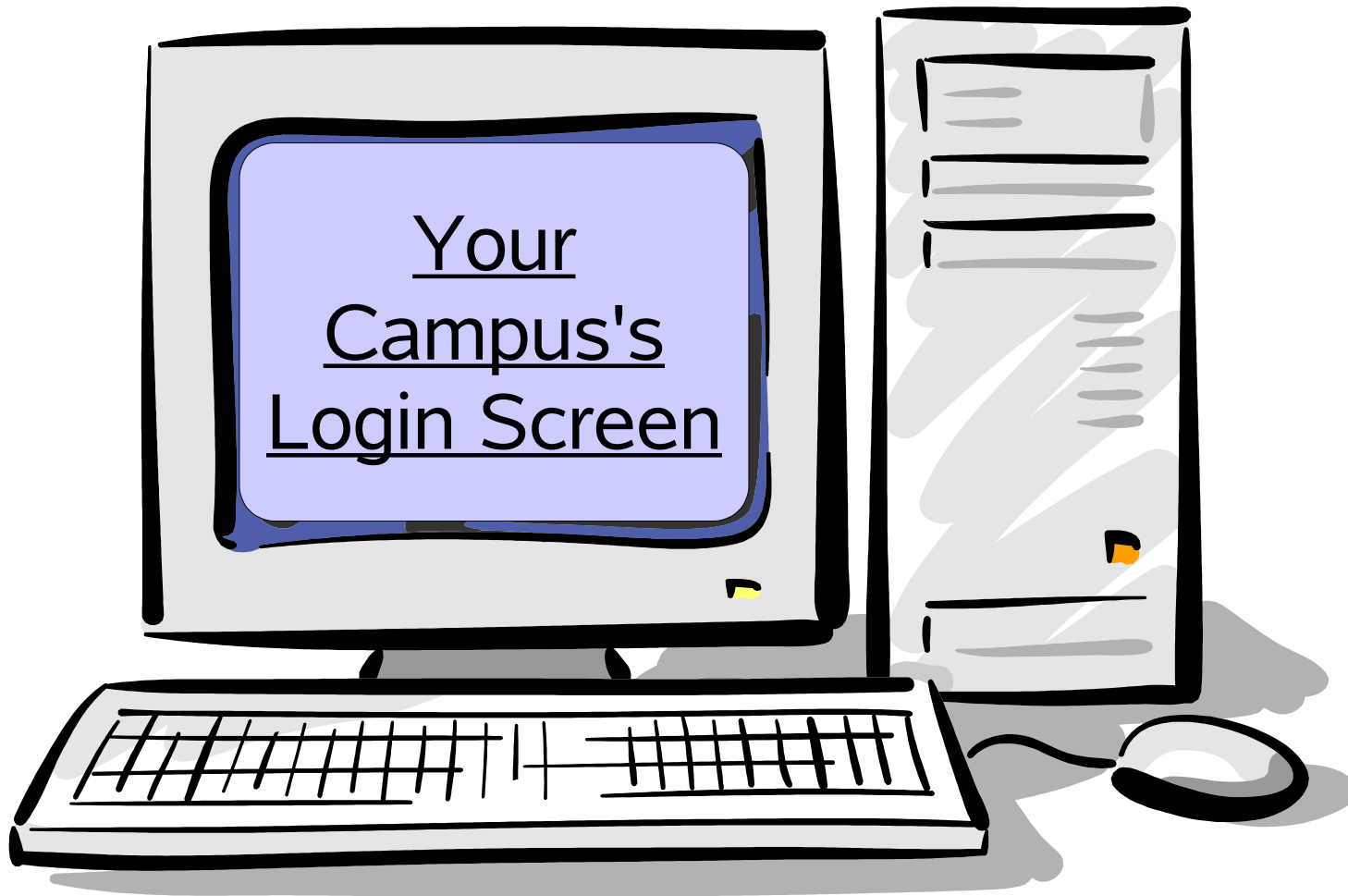
The Issues

- Use of SSN as identifier
- HIPAA privacy requirements
- Increasing use of electronic-only transactions
- Vulnerability of multiple (weak) authentication implementations and identity repositories
- User frustration over multiple identifiers and passwords

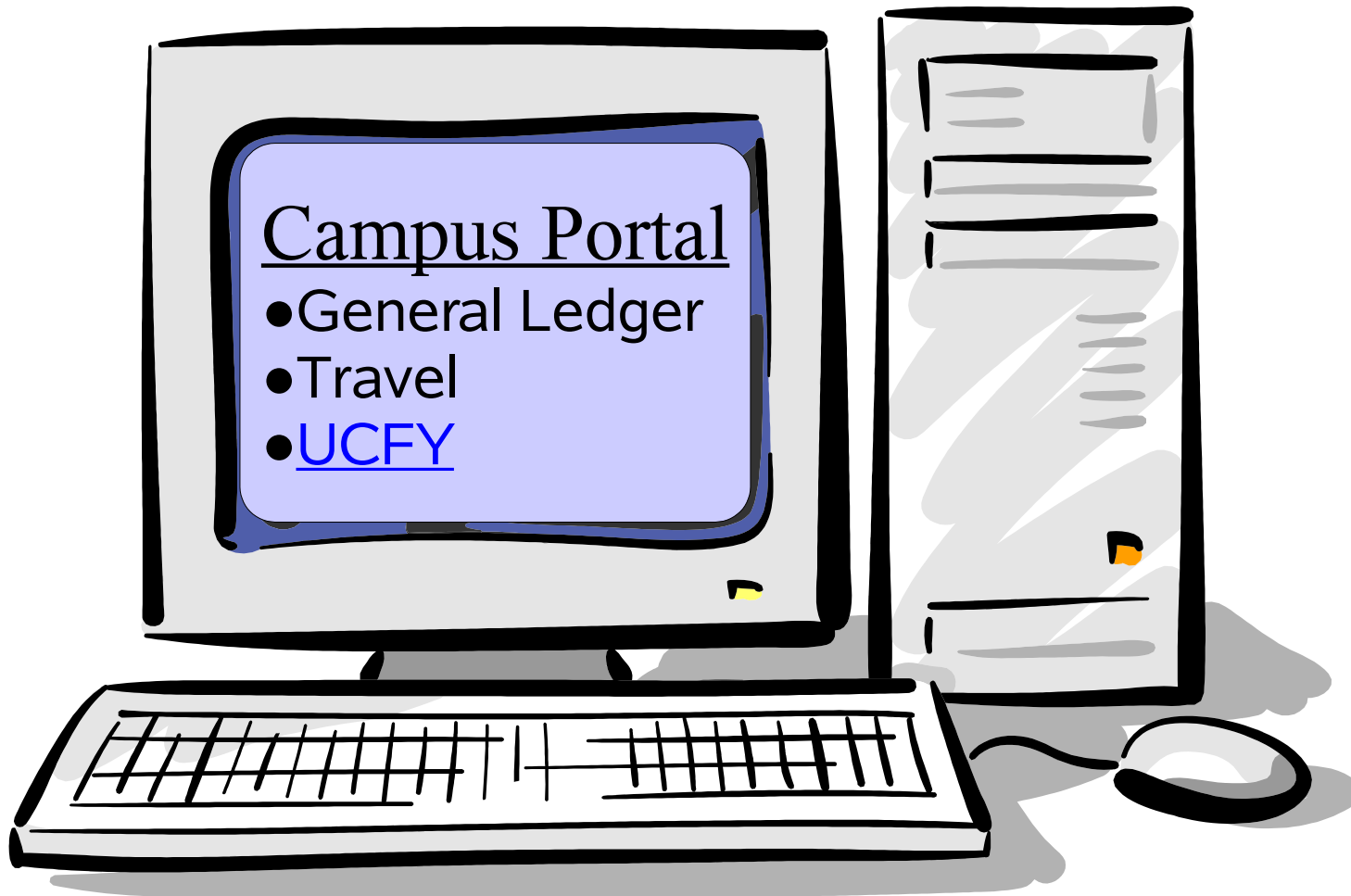
Federated Authentication

- Leverage existing campus authentication systems
- InCommon is being formed as the federation for higher education.
- Applications rely on campus *Attribute Authority* servers to provide reliable information about their community members.

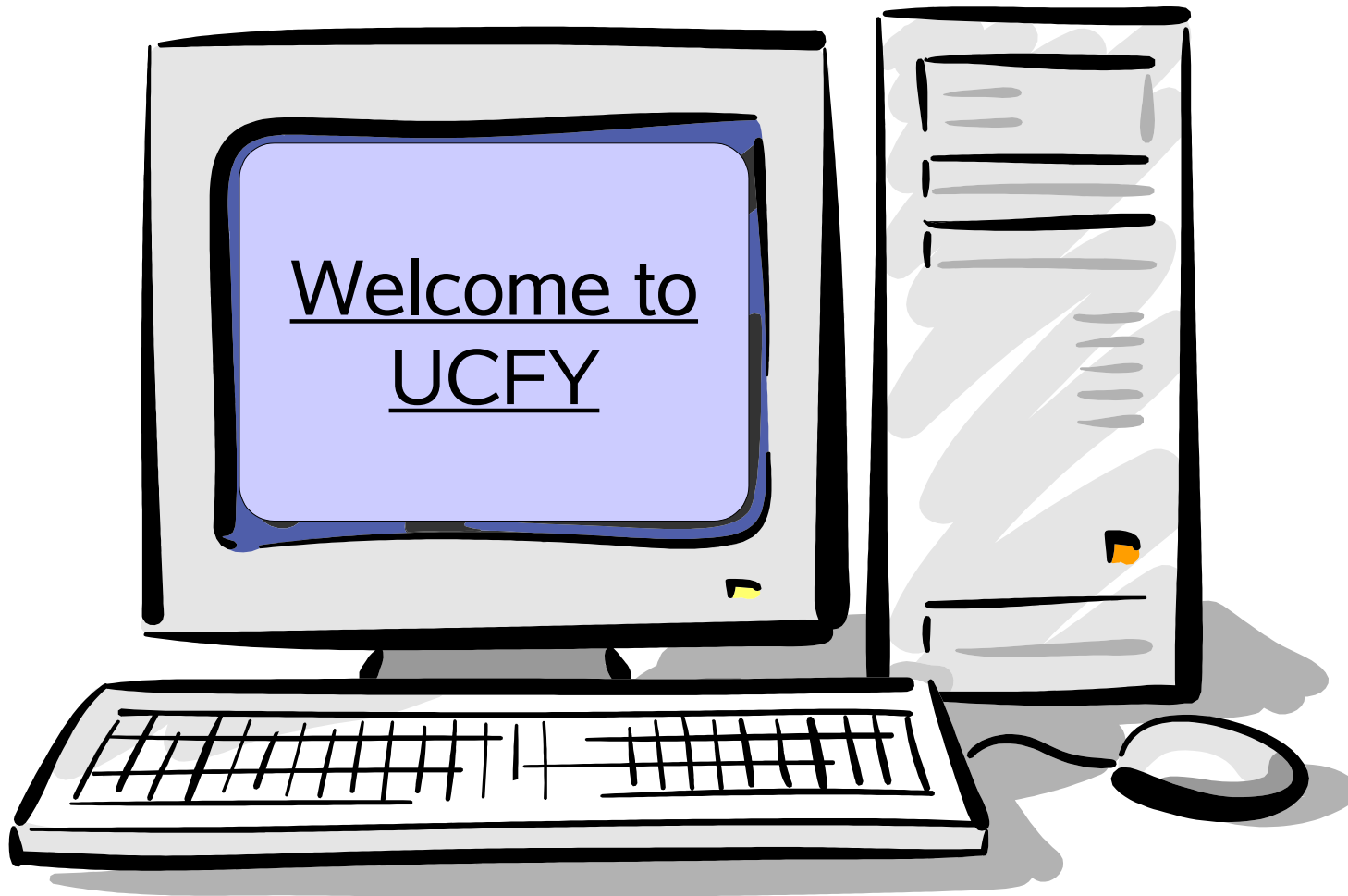
Federated Authentication – What It Looks Like



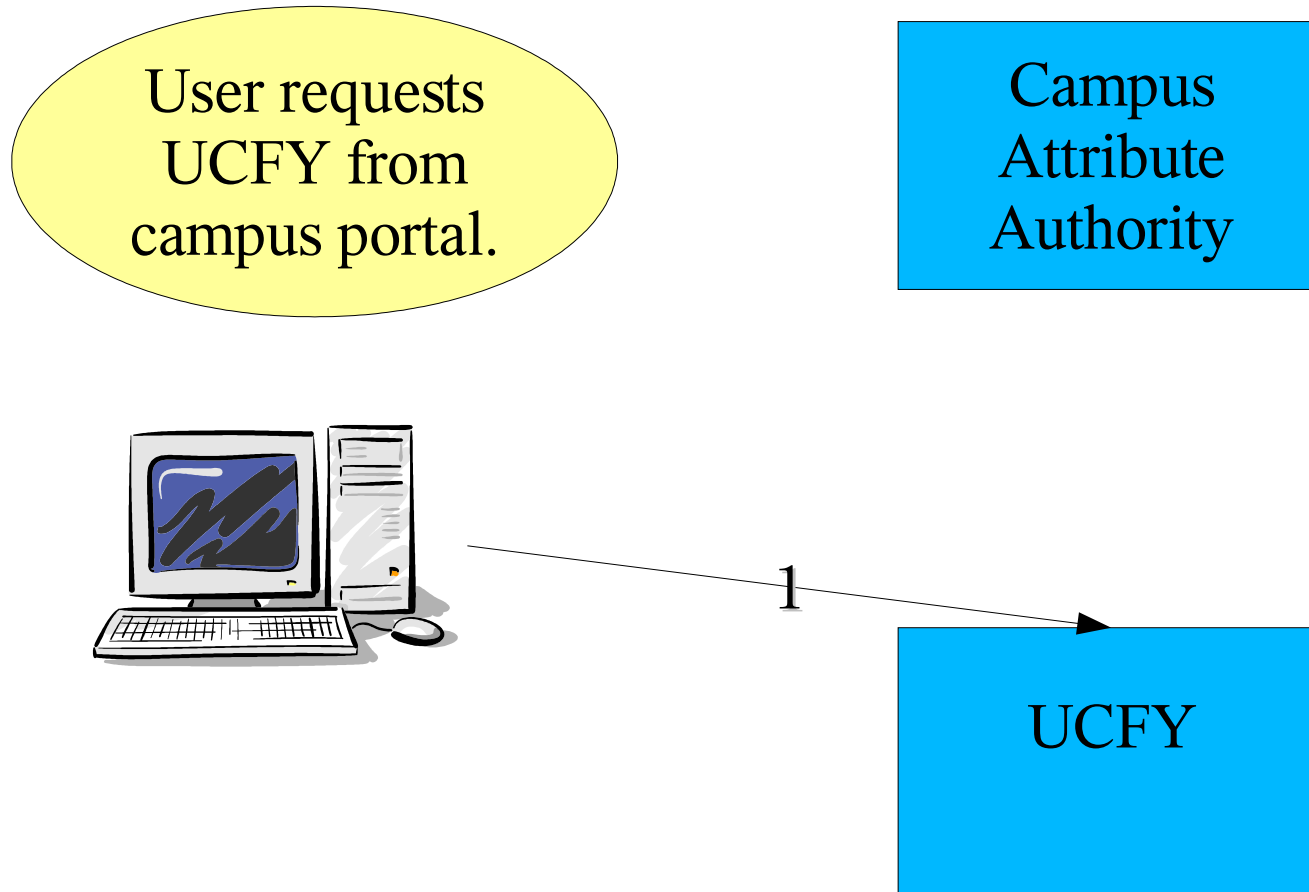
Federated Authentication – What It Looks Like



Federated Authentication – What It Looks Like

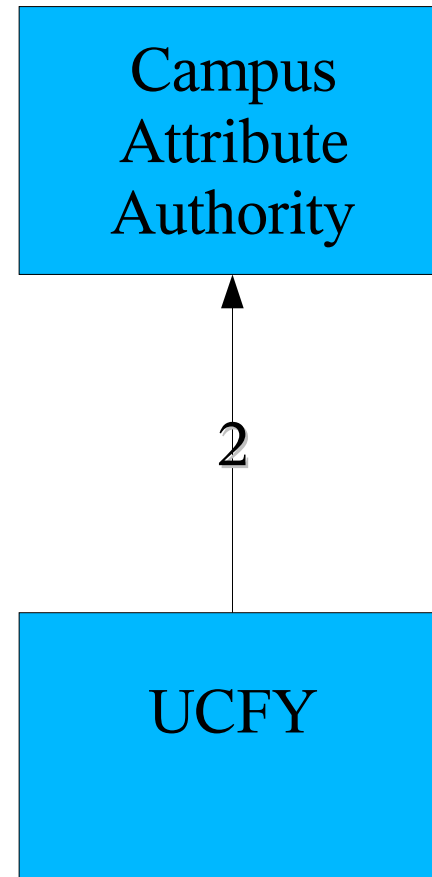
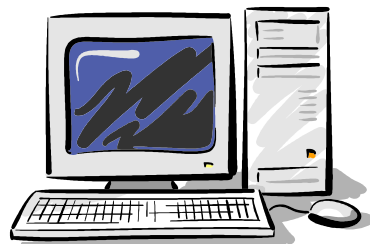


Federated Authentication – Behind the Scenes



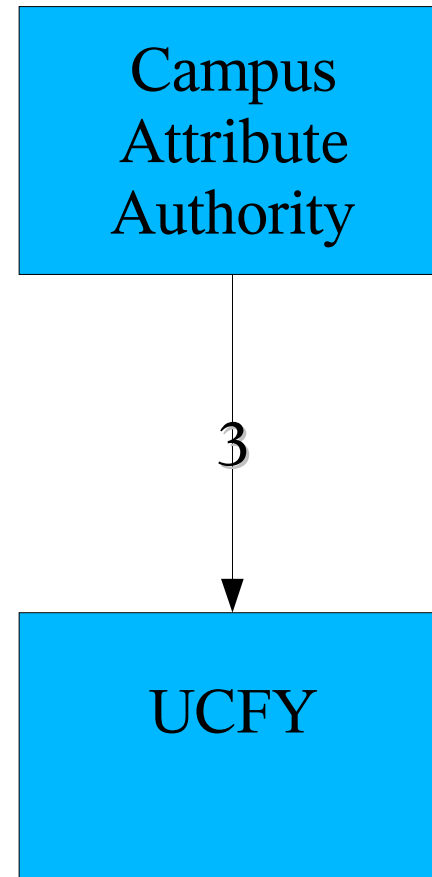
Federated Authentication – Behind the Scenes

“What is this person's UCnetID?”

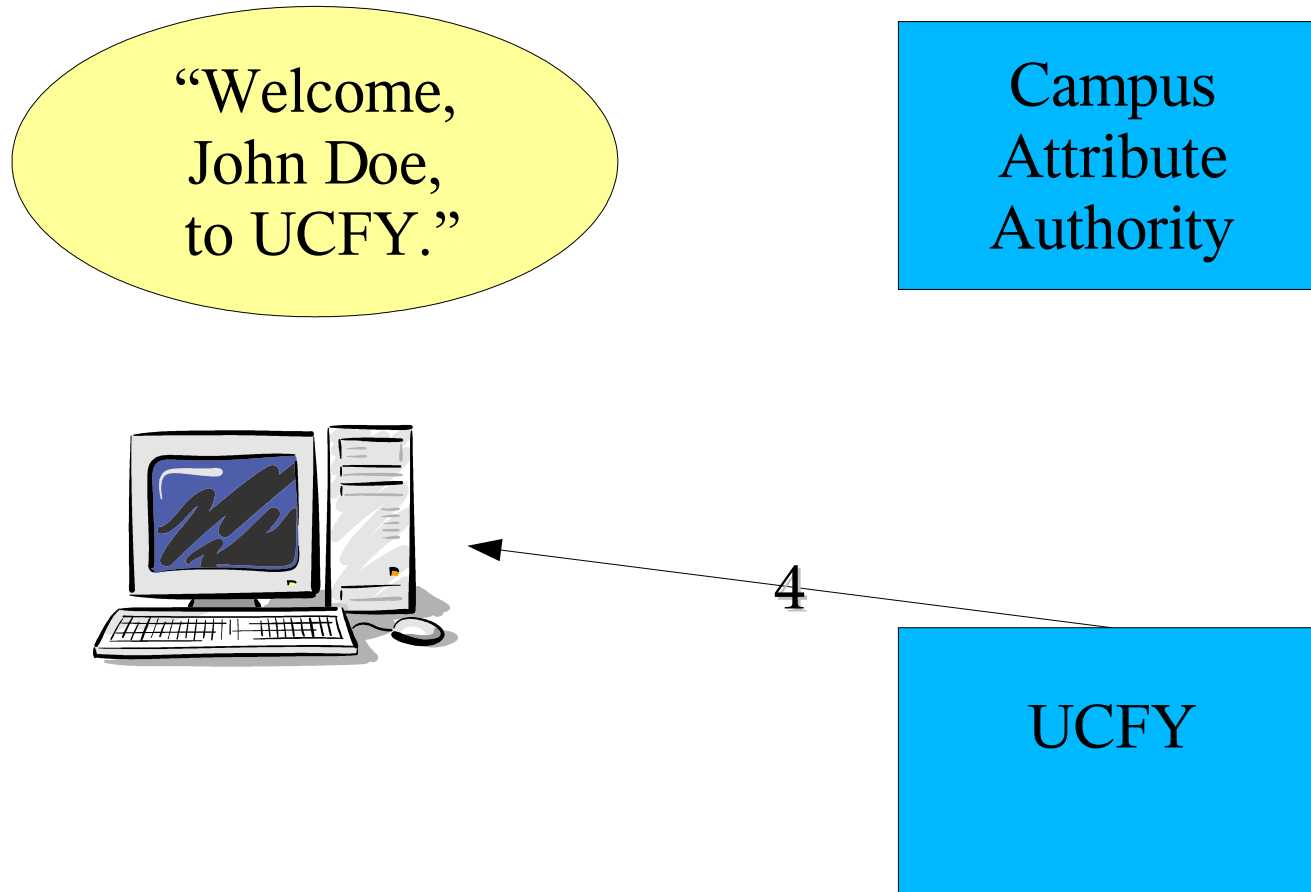


Federated Authentication – Behind the Scenes

“This person's UcnetID is 123456789.”



Federated Authentication – Behind the Scenes



Trust

- Application services *trust* the campuses to provide correct information about members of their communities.
- Campuses *trust* the application services not to misuse the identity information they receive.
- End-users *trust* campuses not to reveal identity information inappropriately and applications not to misuse that information.

Policies for Federated Authentication

- Criteria for management of campus “enterprise directories”
- Criteria for the registration process
- Criteria for the authentication process
- Attribute-specific criteria for use by services
- Alignment with the federation for higher education (InCommon)

Specific Issues for UC

- Each campus must form an appropriate organization to manage its identity issues and to represent the campus on system-wide issues.
 - Should a single access ID be valid for all services (*e.g.*, business *vs.* personal)?
 - Possible re-registration of current users to meet minimal standards
- UCFY will implement workarounds for the pilot
 - (Not practical for all services)

The Current Project

- Campuses are UCLA, UCI, and UCSD
- Application services
 - UC For Yourself / Your Benefits Online
 - CDL-licensed resources (as they are enabled)
- Completion targeted for August, 2004.
- <http://www.ucop.edu/irc/itlc/ucfedauth/>

Next Steps

- Additional CDL vendors
- New Budget System and other Corporate System replacements
- Pathways?
- Effort Reporting System?
- Guest access to campus wireless networks?
- Any application shared by two or more campuses