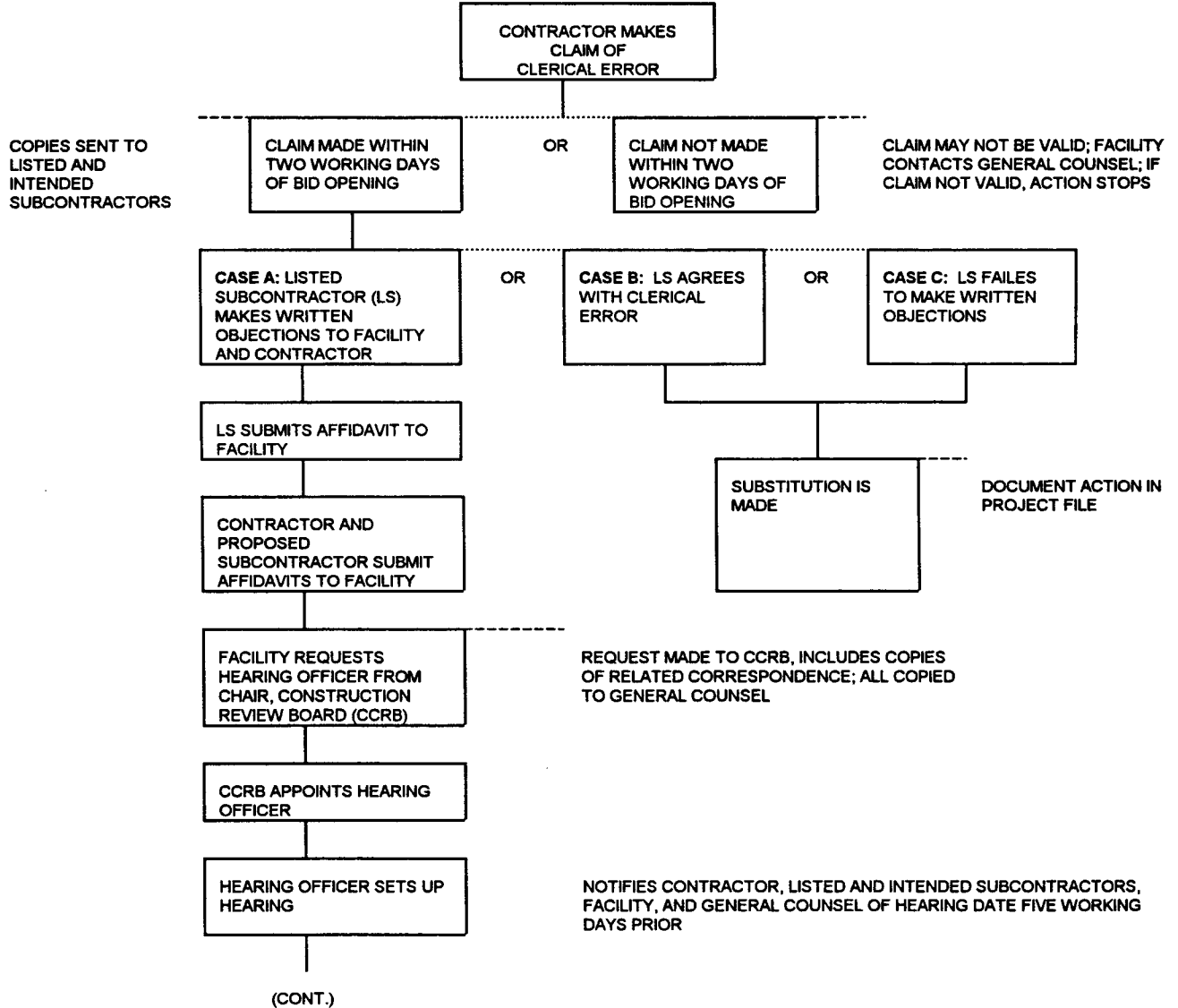


**Resource Directory (RD) 1: Figures**

**RD1.6 FLOW CHART: SUBSTITUTION PROCEDURES FOR CLERICAL ERROR**  
(see [I]:9.2.1)

◆ DATE AND TIME OF BID OPENING



**Resource Directory (RD) 1: Figures**

---

**RD1.6 FLOW CHART: SUBSTITUTION PROCEDURES FOR CLERICAL ERROR (cont.)**

