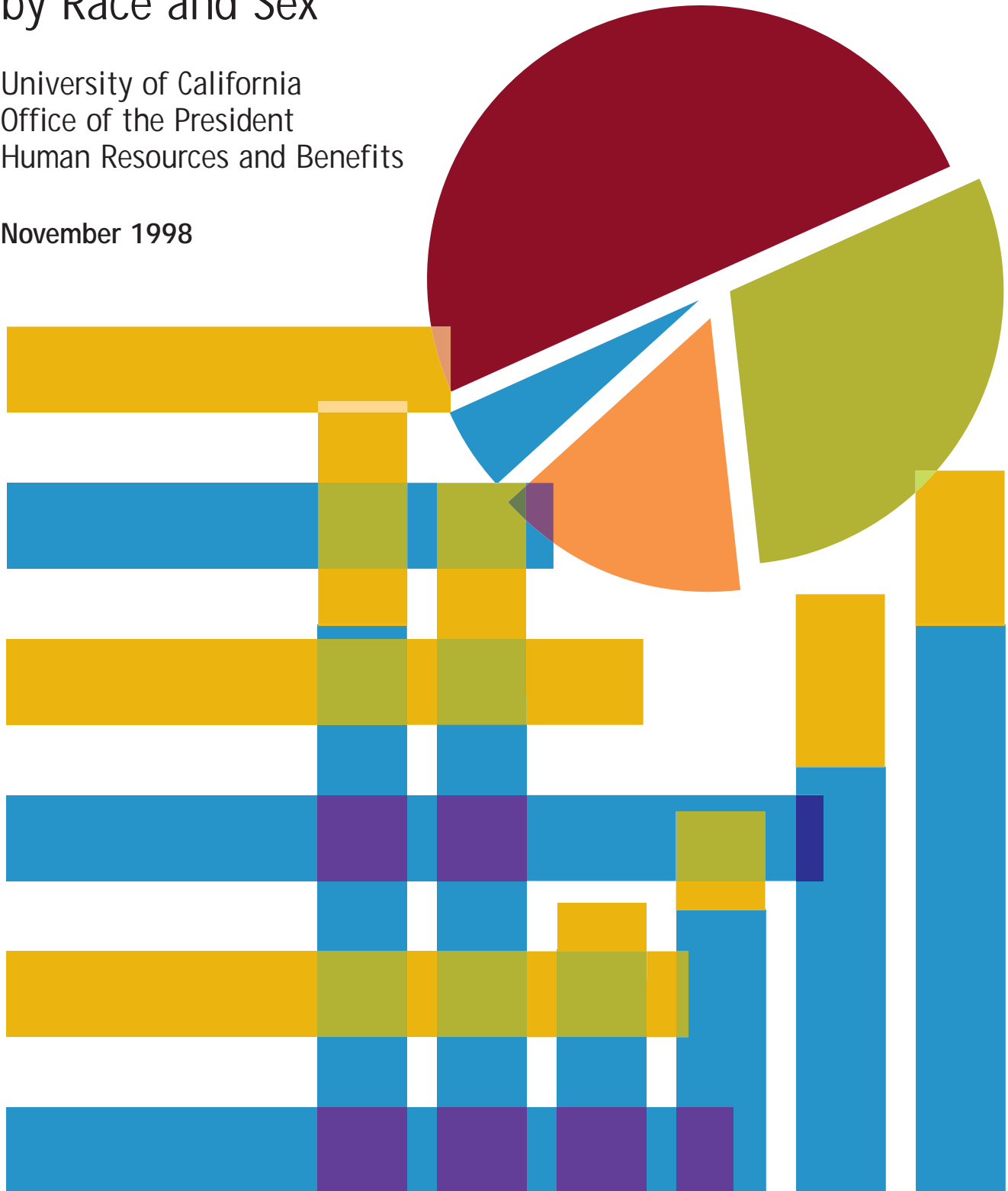


Composition of the Career Staff Workforce at The University of California by Race and Sex

University of California
Office of the President
Human Resources and Benefits

November 1998



University of California

Office of the President
Human Resources and Benefits

Composition of the Career Staff Workforce at the University of California by Race and Sex



November 1998

University of California

Office of the President

This report presents information on the composition of the career staff workforce at the University of California by race and sex. Information on career staff employees is presented Universitywide and by personnel tier. Some of the graphics display the career staff employee population as of April 1998, while others trace changes over time from April 1991 to 1998. The staff workforce array reflects the University's three tiers of personnel groupings which were implemented on July 1, 1996.

The data cover career employees at the nine campuses (including medical centers) and the Office of the President; employees at the DOE Laboratories are not included.

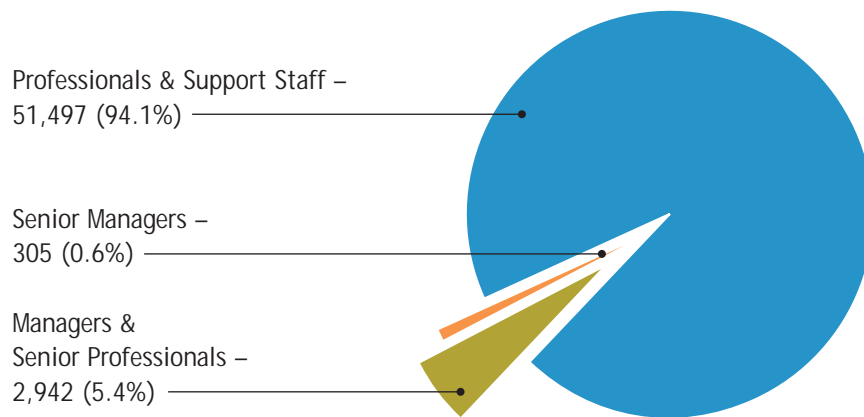
All data in the report were extracted from the Corporate Personnel System developed by the Office of Information Resources and Communications at the Office of the President.

Table of Contents

Page	Chart
1	Career Staff Workforce by Personnel Tier (1998)
2	Career Staff Workforce by Race/Ethnicity (1998)
3	Minority Representation of Career Staff Employees by Personnel Tier (1998)
4	Gender Representation of Career Staff Employees by Personnel Tier (1998)
5	Change in Minority and Female Representation of Career Staff Employees (1991-1998)
6	Career Staff Workforce Race/Sex Representation (1991-1998)
7	Senior Managers Race/Sex Representation (1991-1998)
8	Managers and Senior Professionals Race/Sex Representation (1991-1998)
9	Professionals and Support Staff Race/Sex Representation (1991-1998)
10	Senior Managers Minority and Female Availability and Utilization (1998)
11	Managers and Senior Professionals Minority and Female Availability and Utilization (1998)

Career Staff Workforce* by Personnel Tier 1998

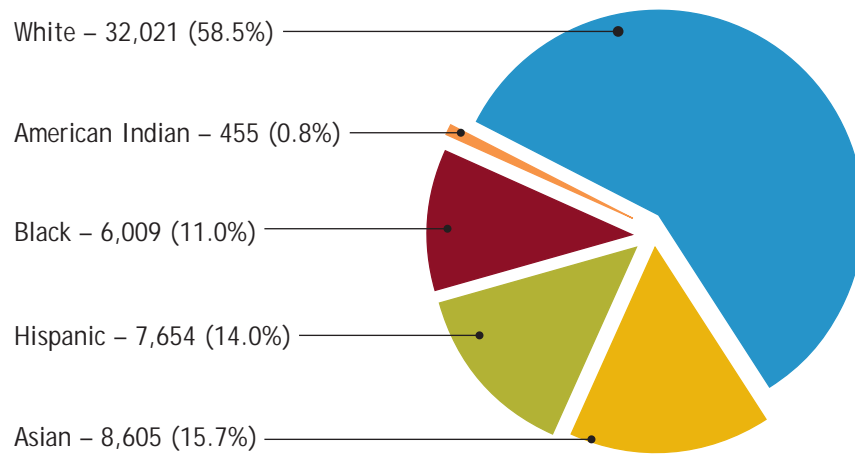
Total = 54,744



*Excludes DOE Laboratories

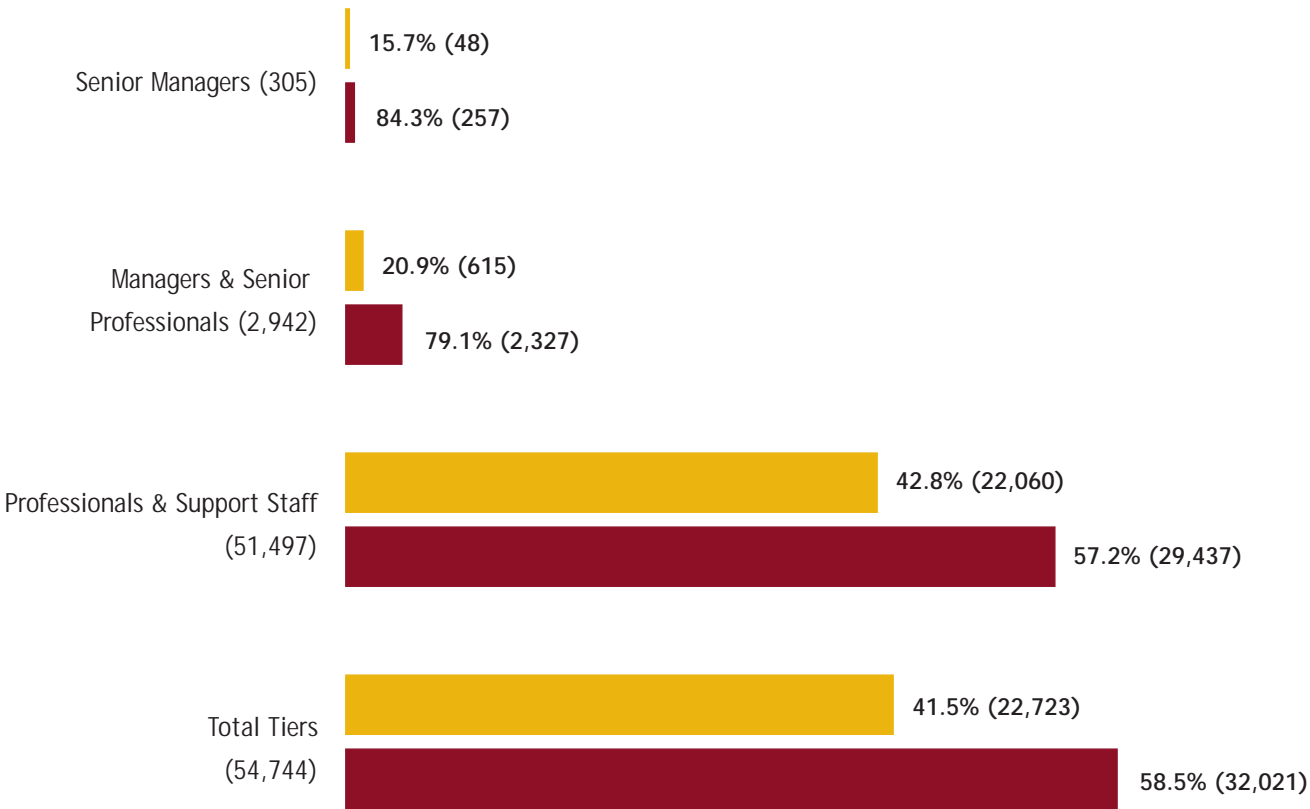
Career Staff Workforce* by Race/Ethnicity 1998

Total = 54,744



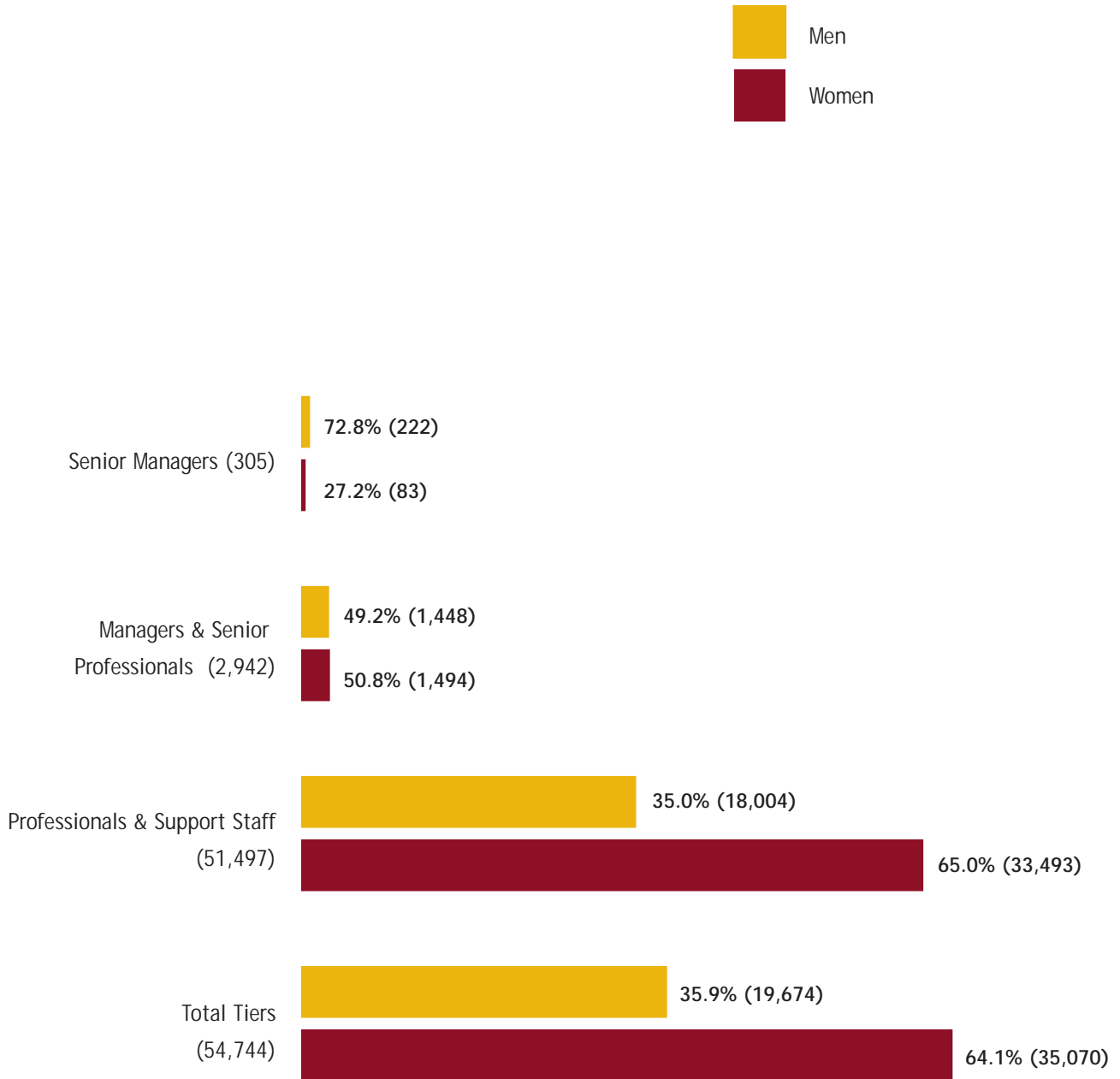
*Excludes DOE Laboratories

Minority Representation of Career Staff Employees* by Personnel Tier 1998



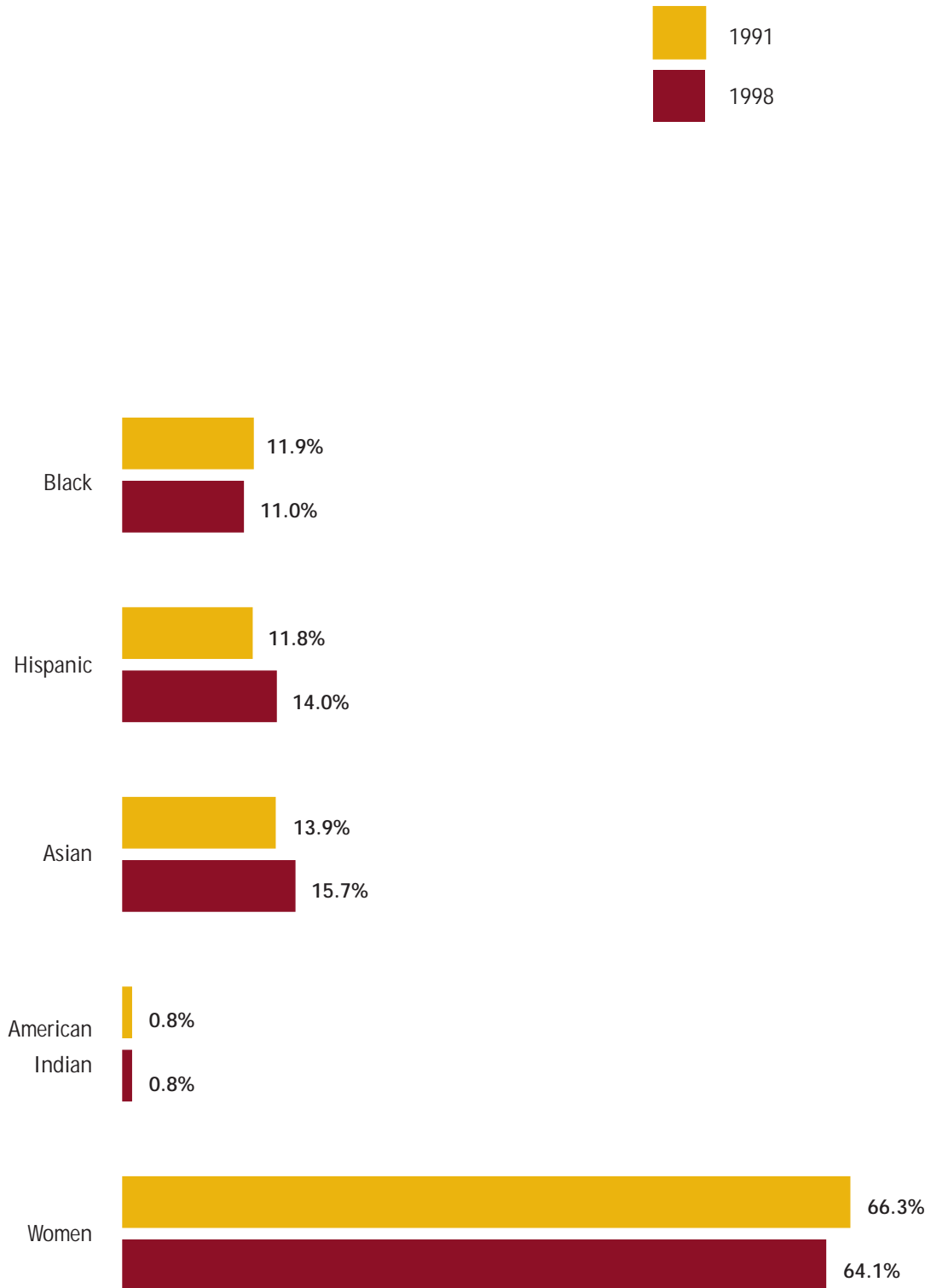
*Excludes DOE Laboratories

Gender Representation of Career Staff Employees* by Personnel Tier 1998



*Excludes DOE Laboratories

Change in Minority and Female Representation* of Career Staff Employees



*Excludes DOE Laboratories

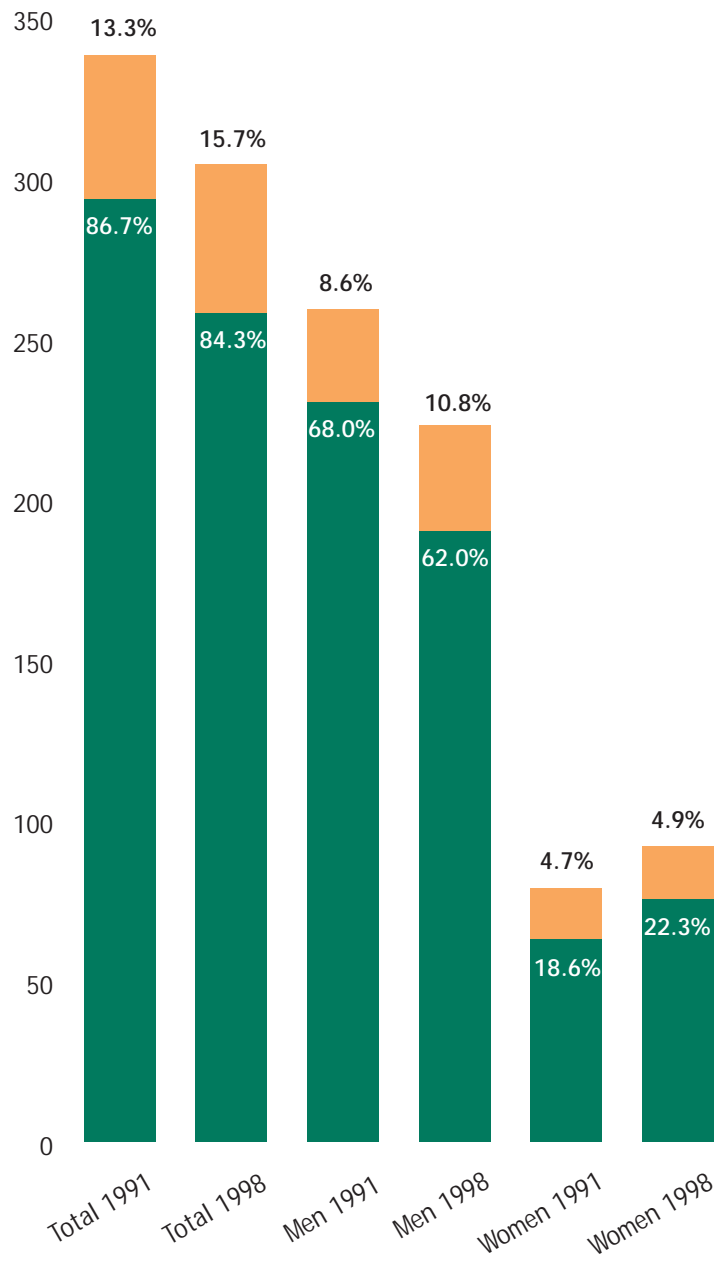
Career Staff Workforce*

Race/Sex Representation



*Excludes DOE Laboratories

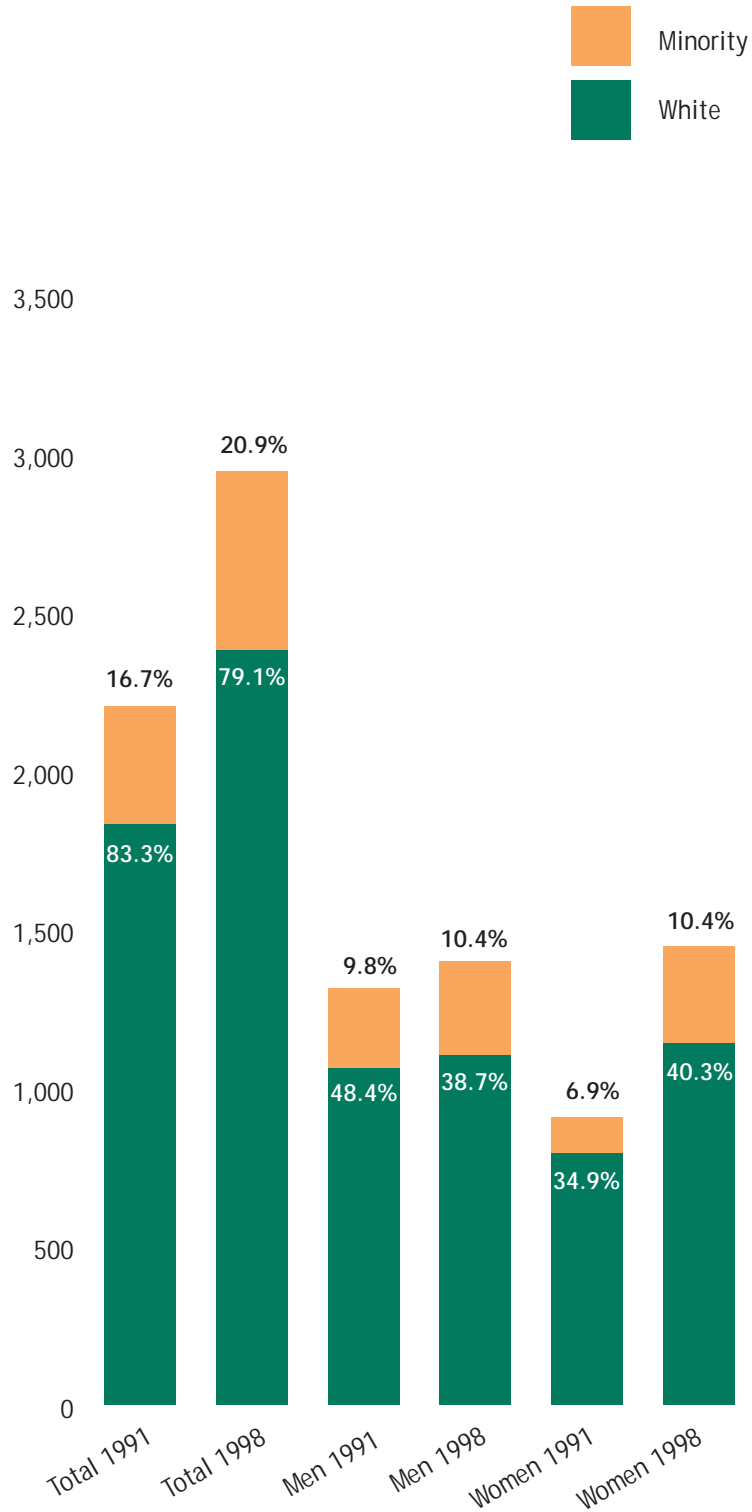
Senior Managers* Race/Sex Representation



*Excludes DOE Laboratories

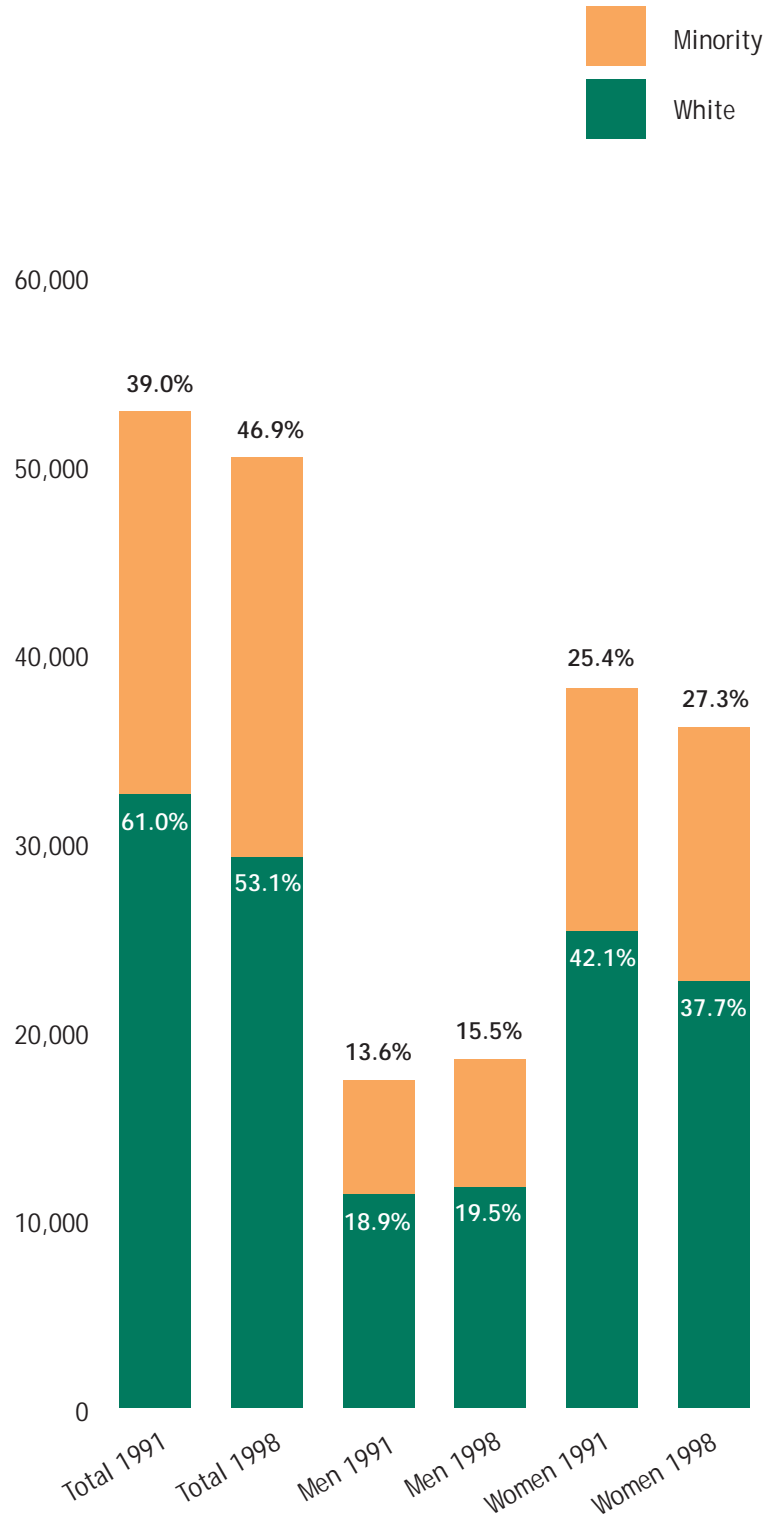
Managers and Senior Professionals*

Race/Sex Representation



*Excludes DOE Laboratories

Professionals and Support Staff * Race/Sex Representation

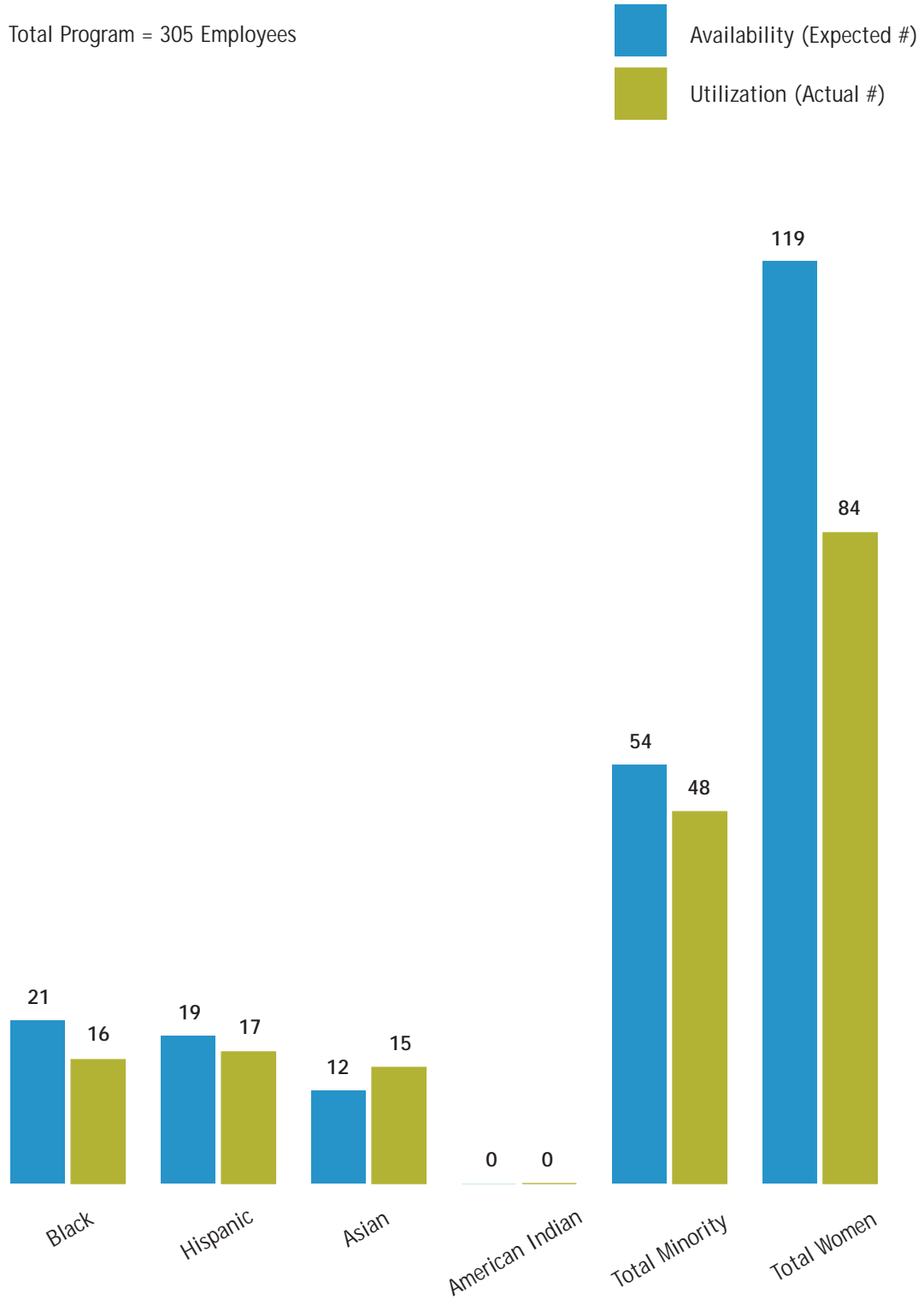


*Excludes DOE Laboratories

Senior Managers*

Minority and Female Availability and Utilization 1998

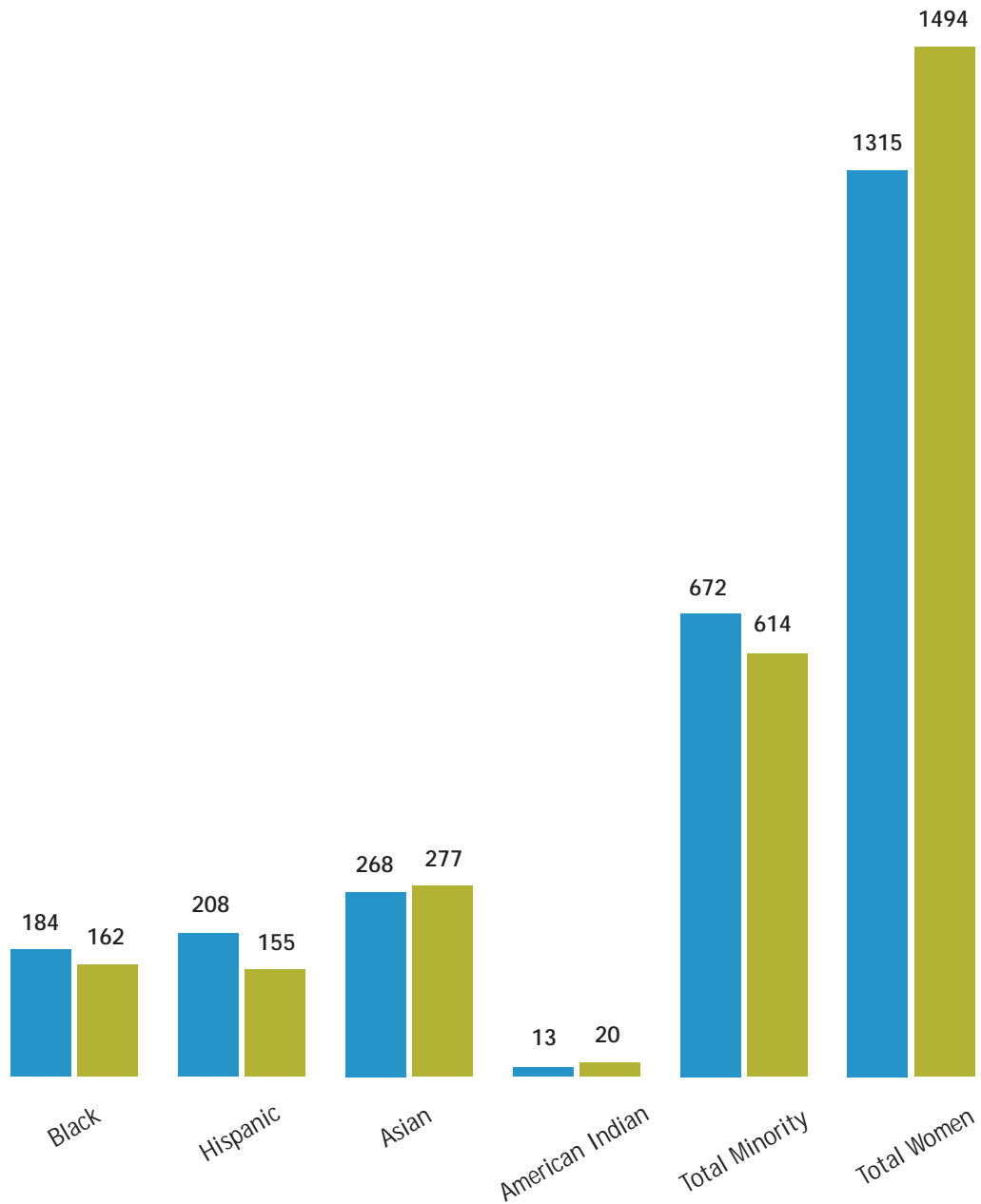
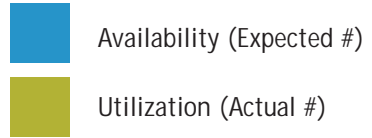
Total Program = 305 Employees



*Excludes DOE Laboratories

Managers and Senior Professionals* Minority and Female Availability and Utilization 1998

Total Program = 2,942 Employees



*Excludes DOE Laboratories

In conformance with applicable law and University policy, the University is an affirmative action/equal opportunity employer.

Inquiries regarding the University's affirmative action and equal opportunity policies may be directed to Trevor Chandler—Academic Affairs at 510-987-9499 (for academic employee-related matters) or to Mattie Williams—Business and Finance at 510-987-0865 (for staff employee-related matters).

Website address: www.ucop.edu/bencom
www.ucop.edu/humres



University of California
Human Resources and Benefits
1111 Franklin Street
Oakland, CA 94607

