

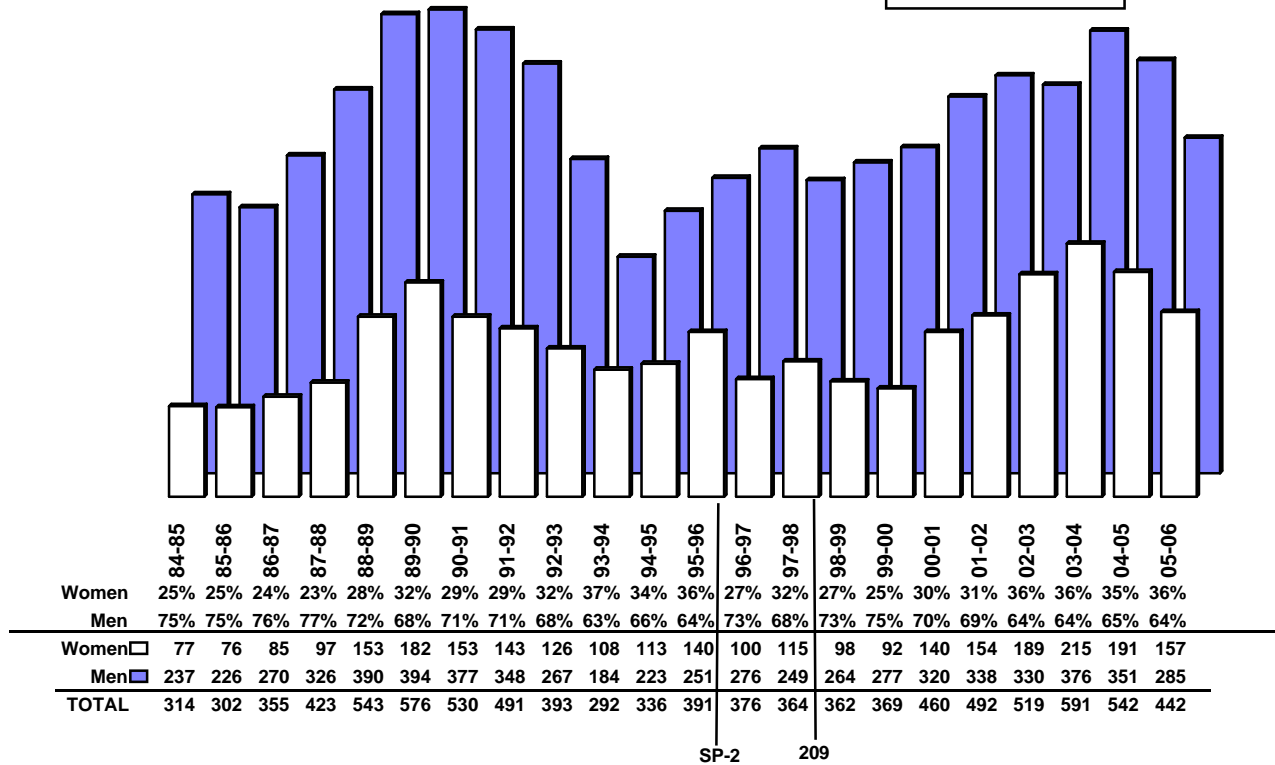
# UNIVERSITY OF CALIFORNIA

## New Appointments of Ladder Rank Faculty 1984-85 through 2005-06

### UNIVERSITYWIDE TOTALS

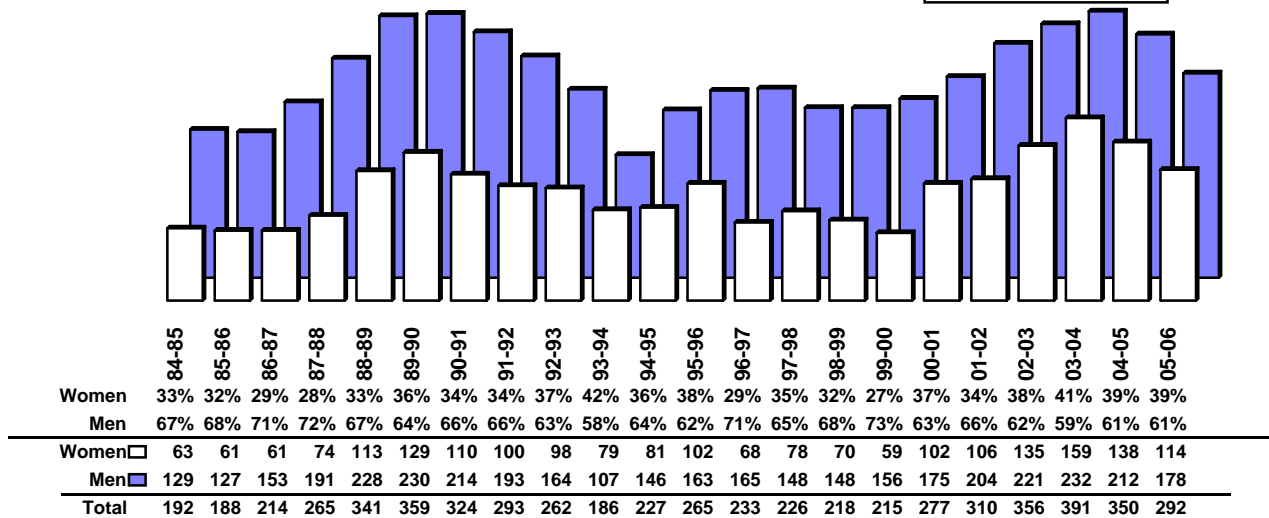
#### All Appointments

1984-85 through 2005-06	
Men	6,559 (69%)
Women	2,904 (31%)
<b>Total</b>	<b>9,463</b>



#### Non-Tenured Appointments

1984-85 through 2005-06	
Men	3,884 (65%)
Women	2,100 (35%)
<b>Total</b>	<b>5,984</b>







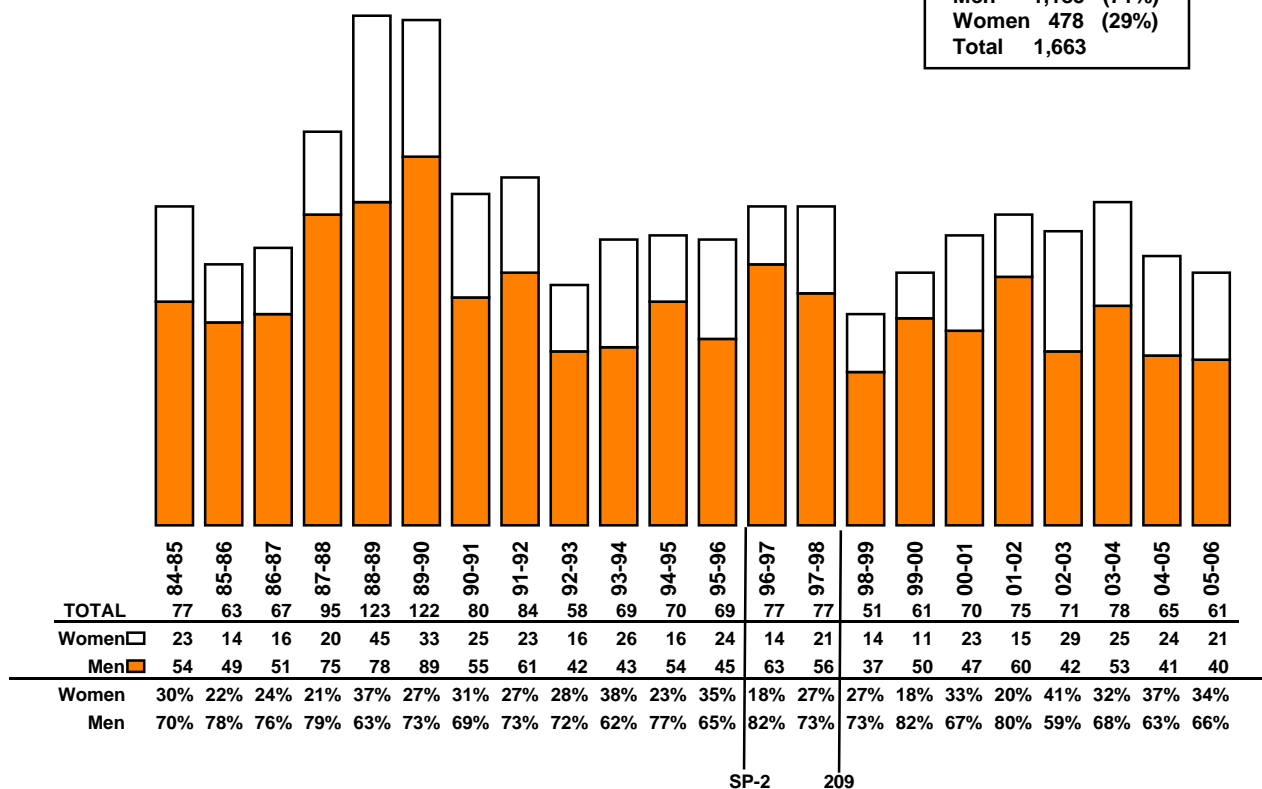


# UNIVERSITY OF CALIFORNIA NEW APPOINTMENTS OF LADDER RANK FACULTY 1984-85 through 2005-06

## Los Angeles

### All Appointments

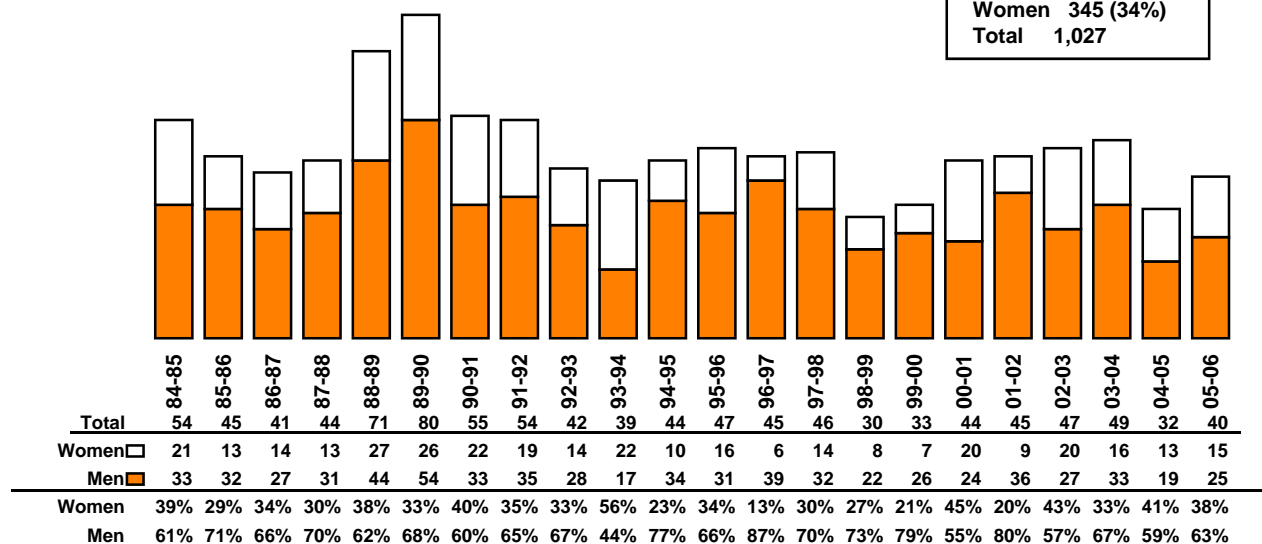
<u>1984-85 through 2005-06</u>	
Men	1,185 (71%)
Women	478 (29%)
Total	1,663



SP-2      209

### Non-Tenured Appointments

<u>1984-85 through 2005-06</u>	
Men	682 (66%)
Women	345 (34%)
Total	1,027











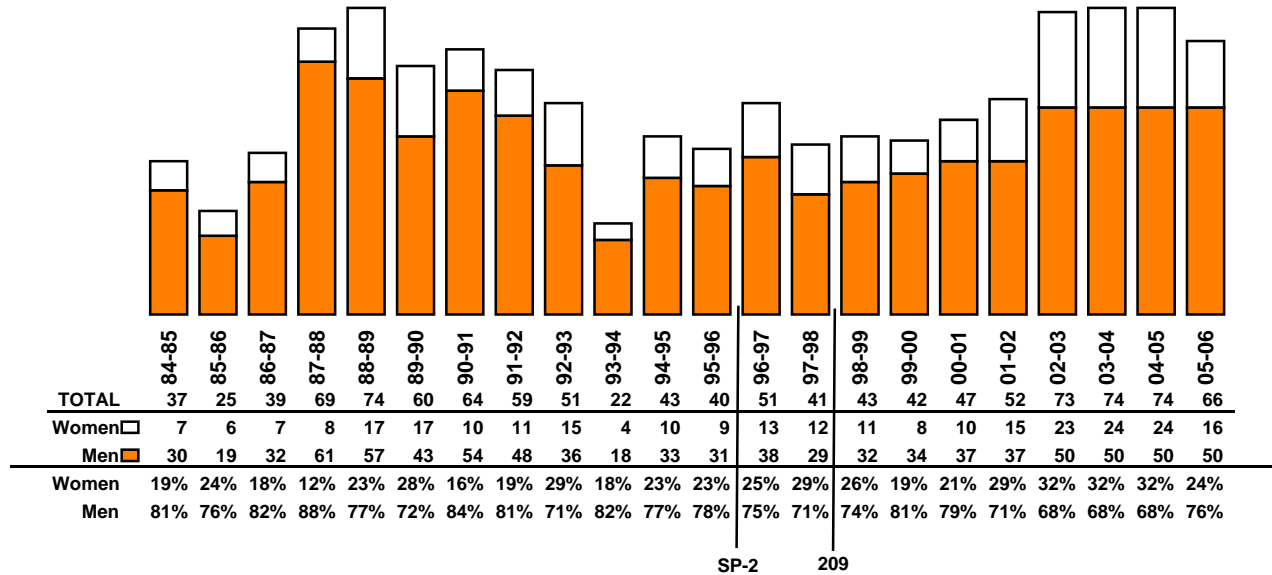
# UNIVERSITY OF CALIFORNIA NEW APPOINTMENTS OF LADDER RANK FACULTY

1984-85 through 2005-06

## San Diego

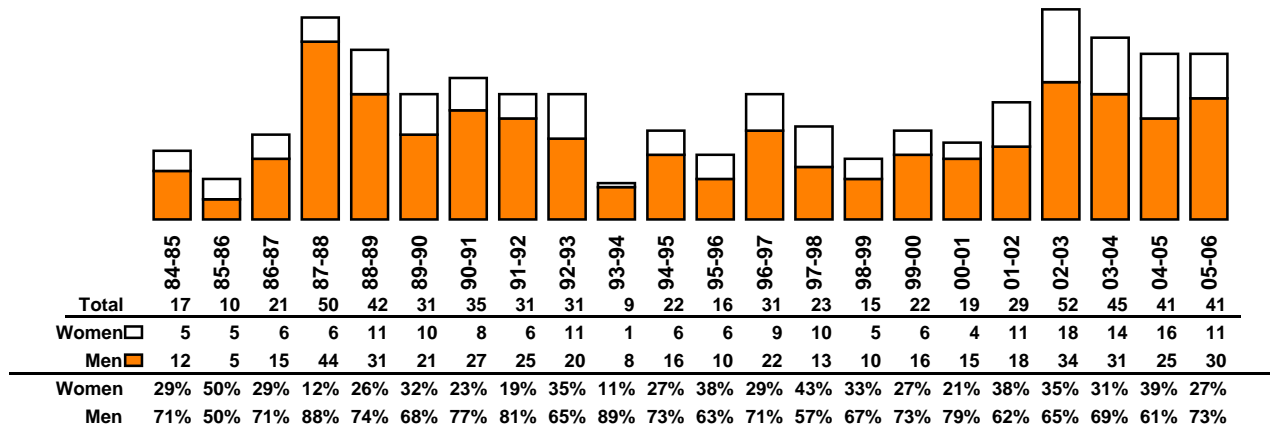
### All Appointments

1984-85 through 2005-06	
Men	869 (76%)
Women	277 (24%)
<b>Total</b>	<b>1,146</b>



### Non-Tenured Appointments

1984-85 through 2005-06	
Men	448 (71%)
Women	185 (29%)
<b>Total</b>	<b>633</b>

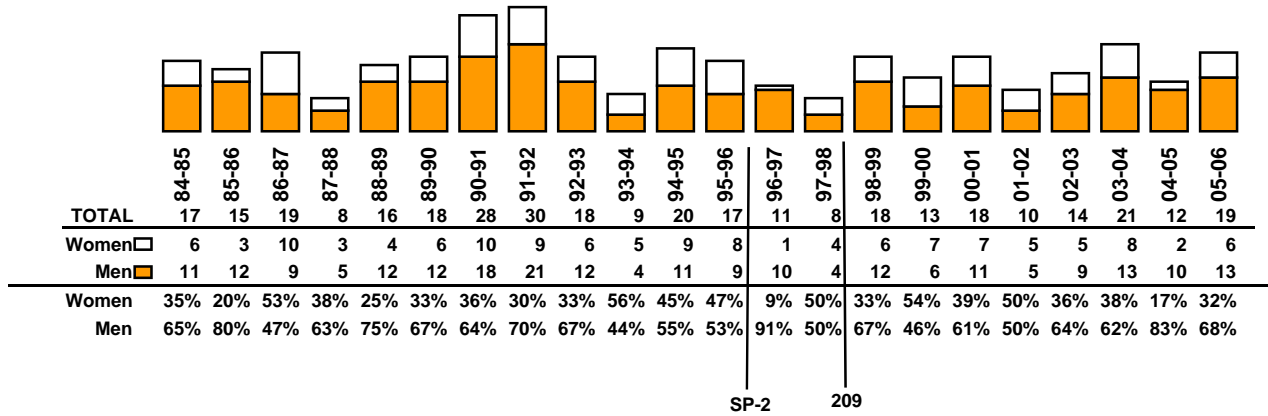


# UNIVERSITY OF CALIFORNIA NEW APPOINTMENTS OF LADDER RANK FACULTY 1984-85 through 2005-06

## San Francisco

### All Appointments

1984-85 through 2005-06		
Men	229	(64%)
Women	130	(36%)
Total	359	



### Non-Tenured Appointments

1984-85 through 2005-06		
Men	96	(56%)
Women	76	(44%)
Total	172	

